

REVISED

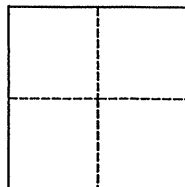
CORNER RECORD

Agency Index BK 102 PG 32
Document Number CR 10636

City of CASTRO VALLEY County of ALAMEDA, California
Brief Legal Description AF78U3 (FAIRMONT DRIVE EAST OF FOOTHILL BLVD)

CORNER TYPE

COORDINATES (Optional)



Government Corner ☒ Control
Meander ☐ Property
Rancho ☐ Other

N. _____ E. _____
Elevation _____
Units Metric ☐ U.S. Survey Foot ☒
Horizontal Datum _____
Zone _____ Epoch Date _____
Vertical Datum _____

Date of Survey 07/24/2017

☐ Complies with Public Resources Code §§8801-8819
☐ Complies with Public Resources Code §§8890-8902

PLS Act Ref.: ☒ 8765(d) ☐ 8771 ☐ 8773 ☐ Other:
Corner/
Monument: ☐ Left as found ☐ Established ☐ Rebuilt ☒ Pre-Construction
☐ Found and tagged ☐ Reestablished ☐ Referenced ☐ Post-Construction

Narrative of corner identified and monument as found, set, reset, replaced, or removed:

☐ See sheet #2 for description(s):

FOUND COUNTY BRASS CAP MON IN MON WELL, DOWN 12";
SET FOUR MAG NAILS AND TIES TO TY91K3 AS SHOWN ON SHEET 2.

SURVEYOR'S STATEMENT

This Corner Record was prepared by me or under my direction in conformance with

the Professional Land Surveyors' Act on JULY 30, 2017

Signed [Signature] P.L.S. or R.C.E. No. LS 5837



COUNTY SURVEYOR'S STATEMENT

This Corner Record was received September 20, 2017

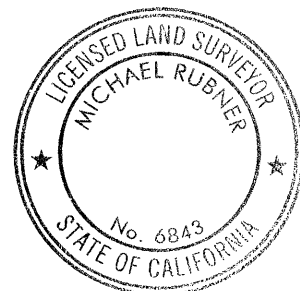
and examined and filed 16 MARCH 2018

Signed Michael Rubner P.L.S. or R.C.E. No. 6843

Title COUNTY SURVEYOR

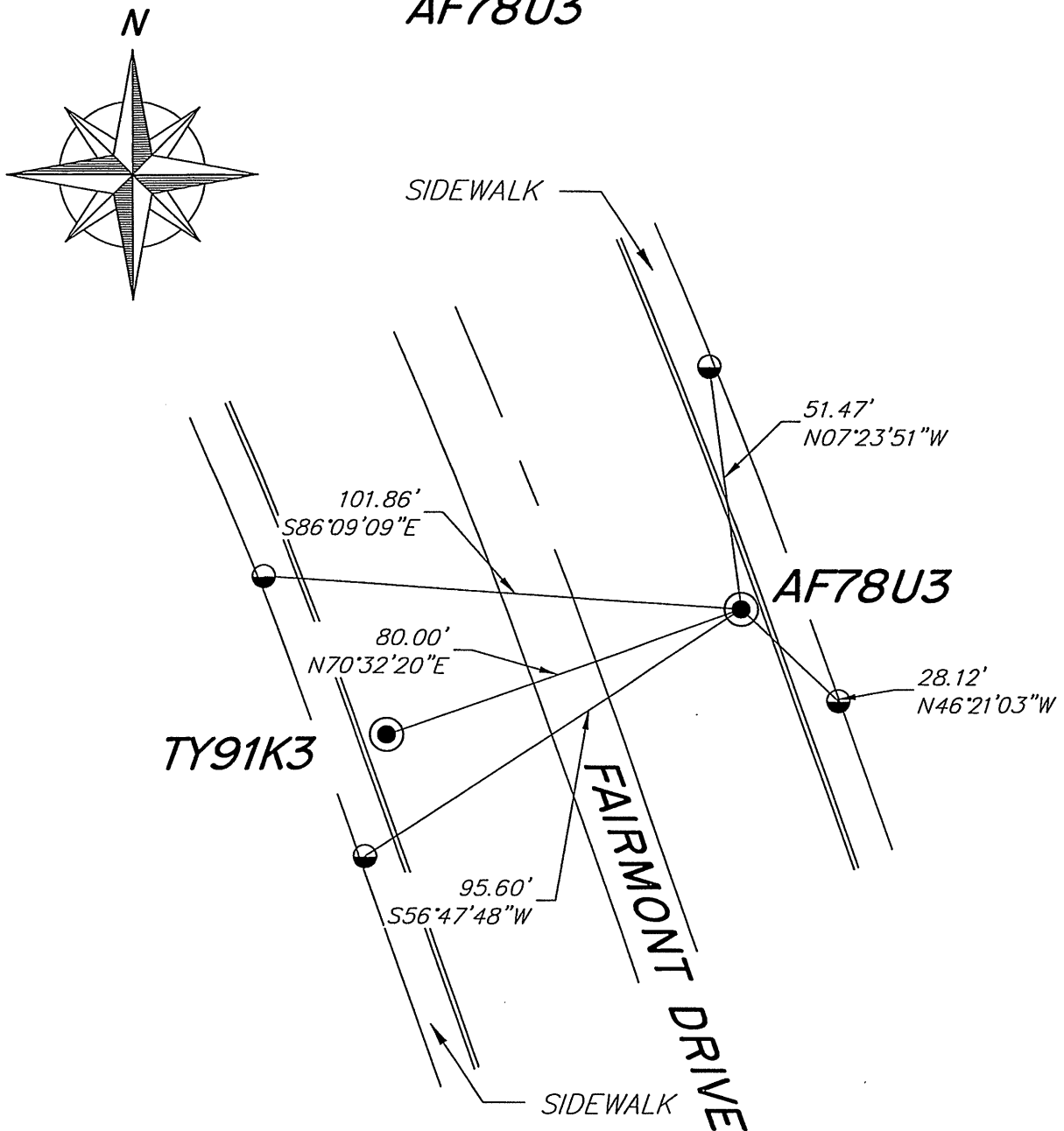
County Surveyor's Comment

REVISED (26/02/2018)



SPEC 2279

NO SCALE

**LEGEND**

● FOUND ACBCM IN MON WELL

SET MAG NAIL UNLESS
OTHERWISE SHOWN

ACBCM ALAMEDA COUNTY
BRASS CAP MONUMENT

NOTE THAT BEARINGS ARE
APPROXIMATE AND ARE TO
BE USED FOR ANGLE
CALCULATIONS ONLY.