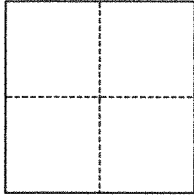


# CORNER RECORD

Agency Index BK144 PG 97Document Number CR 15228City of OAKLAND County of ALAMEDA, CaliforniaBrief Legal Description MONUMENT AT WAYNE PL AND 3RD AVE

## CORNER TYPE



☐ Government Corner ☒ Control  
☐ Meander ☐ Property  
☐ Rancho ☐ Other

Date of Survey March 9, 2021

## COORDINATES (Optional)

N. \_\_\_\_\_ E. \_\_\_\_\_

Elevation \_\_\_\_\_

Units ☐ Metric ☒ U.S. Survey Foot

Horizontal Datum \_\_\_\_\_

Zone \_\_\_\_\_ Epoch Date \_\_\_\_\_

Vertical Datum \_\_\_\_\_

☐ Complies with Public Resources Code §§8801-8819☐ Complies with Public Resources Code §§8890-8902PLS Act Ref.: ☐ 8765(d) ☒ 8771 ☐ 8773 ☐ Other:

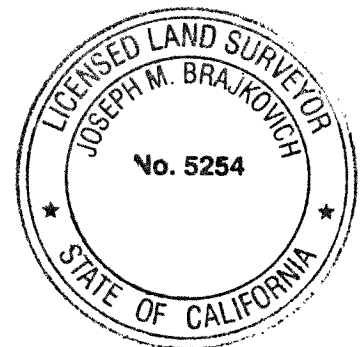
Corner/  
Monument: ☒ Left as found ☐ Established ☐ Rebuilt ☒ Pre-Construction  
☐ Found and tagged ☐ Reestablished ☒ Referenced ☐ Post-Construction

Narrative of corner identified and monument as found, set, reset, replaced, or removed:

☒ See sheet #2 for description(s):

## SURVEYOR'S STATEMENT

This Corner Record was prepared by me or under my direction in conformance with

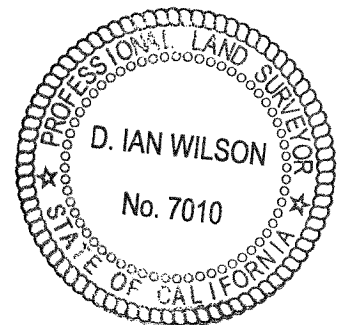
the Professional Land Surveyors' Act on 4 21 21Signed [Signature] P.L.S. or ~~P.C.E.~~ No. 5254

## COUNTY SURVEYOR'S STATEMENT

This Corner Record was received \_\_\_\_\_

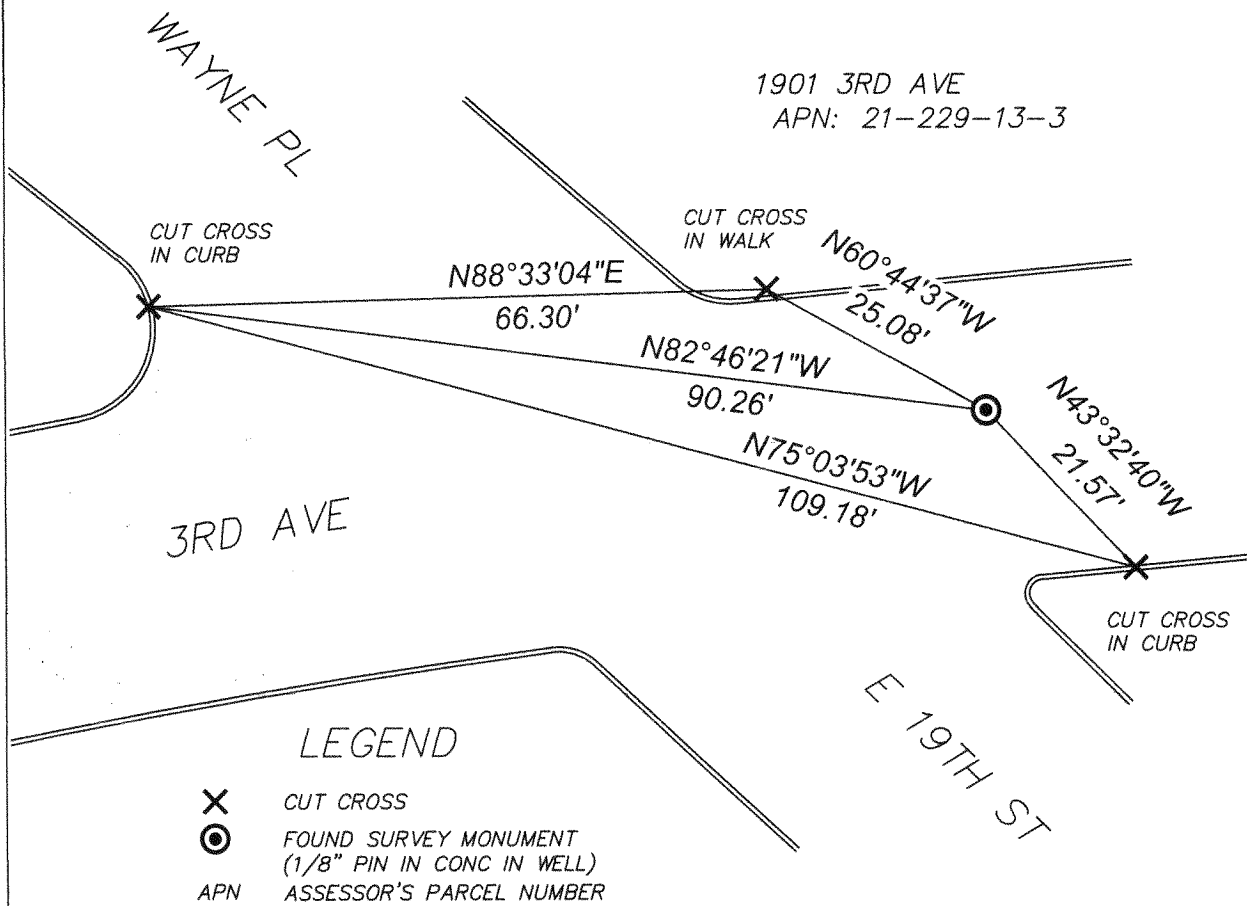
and examined and filed JAN 12 2022Signed D. Ian Wilson P.L.S. or ~~P.C.E.~~ No. 7010Title ALAMEDA COUNTY SURVEYOR

County Surveyor's Comment





SCALE: 1" = 20'



21007-021821