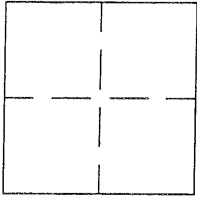


CORNER RECORD

BK 54 PG 46APN No. 84C - 905 - _____ (Optional)Document Number CR 2802City of UNINCORPORATEDCounty of ALAMEDA, California

Brief Legal Description _____



CORNER TYPE

Government Corner ☐ Control ☐
Meander ☐ Property ☐
Rancho ☐ Other ☐
Date of Survey SEPTEMBER 1, 2006

COORDINATES (Optional)

N. _____
E. _____
Zone _____ Datum _____
Elev. _____

Corner - Left as found ☐ Found and tagged ☐ Established ☒ Reestablished ☐ Rebuilt ☐

In compliance with Section 8771 of the Professional Land Surveyors' Act, this corner record is being filed to
ESTABLISH _____ / REESTABLISH ☒ the position of an existing monument PRIOR _____ / SUBSEQUENT ☒
to street or highway reconstruction. (Use this portion only when applicable.)

Identification and type of corner found: Evidence used to identify or procedure used to establish or reestablish the corner:
The Monument as shown on the Drawing on the reverse side was Referenced by Found Rebar & Caps and a Scribed
Cross out of the work area. Caps are Stamped "Alameda County Surveyor"

A description of the physical condition of the monument as found and as set or reset: Set Cotton Spindle on the Surface.
The original monument was Destroyed due to Road Construction.

SURVEYOR'S STATEMENT

This Corner Record was prepared by me or under my direction in conformance with
the Land Surveyors' Act on September 2, 2006.

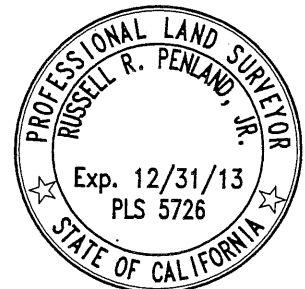
Signed Robert A. Machado (LS) or R.C.E. Number 7380



COUNTY SURVEYOR'S STATEMENT

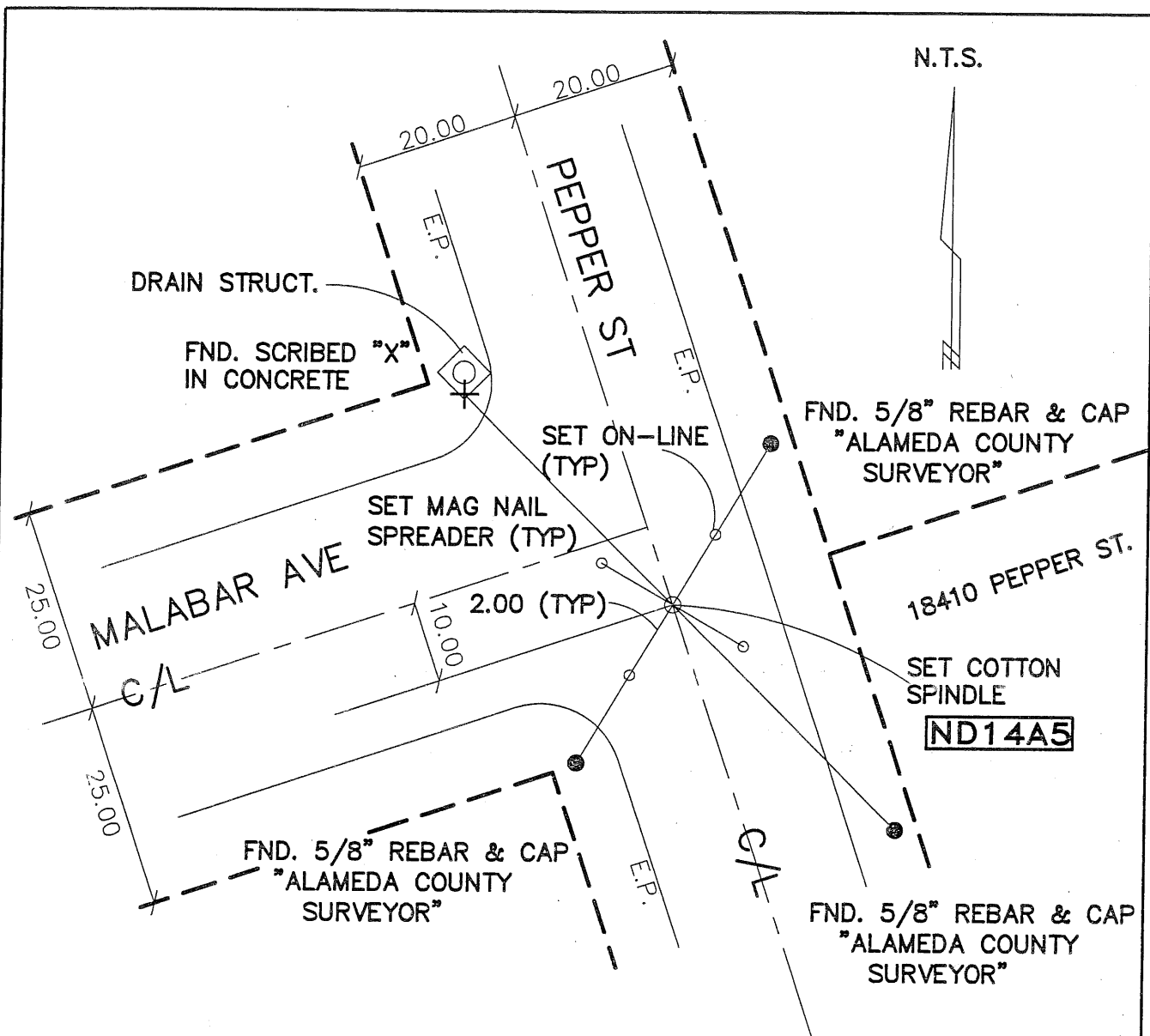
This Corner Record was received September 13, 2006 and examined
and filed 10-13 2013.

Signed [Signature] Title County Surveyor



County Surveyor's Comment

CR-2779 IS THE PRIOR RECORD TO THIS SUBSEQUENT DOCUMENT.



LEGEND

AA###A# ALAMEDA COUNTY MONUMENT ID

REFERENCE MAPS

PM 2344 BK. 128 MAPS PG. 42
 PM 721 BK. 72 MAPS PG. 20
 PM 5682 BK. 200 MAPS PG. 40
 PM 8207 BK. 282 MAPS PG. 32
 RS 1389 BK. 20 RS PG. 33