

BK 43 Pg 26

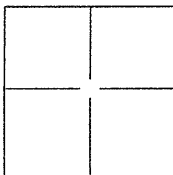
CORNER RECORD

Document Number CR 4767

City of BERKELEY

County of ALAMEDA, California

Brief Legal Description MONUMENT B2550



CORNER TYPE

Government Corner ☐ Control ☒
 Meander ☐ Property ☐
 Rancho ☐ Other ☐

Date of Survey 12/21/2011

COORDINATES(Optional)

N. _____
 E. _____
 Zone _____ NAD27 ☐ NAD83 ☐
 NAD83 Epoch _____
 Elev. _____
 Vert. Datum: NGVD29 ☐ NADV88 ☐
 Meas. Units: Metric ☐ Imperial ☐

Corner - Left as found ☒ Found and tagged ☐ Established ☐ Reestablished ☐ Rebuilt ☐

Identification and type of corner found: Evidence used to identify or procedure used to establish or reestablish the corner:

FOUND CITY OF BERKELEY MONUMENT B2550
IN WELL

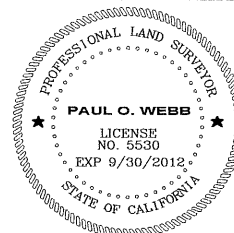
A description of the physical condition of the monument as found and as set or reset: FOUND
MONUMENT IN GOOD CONDITION. SET 4
CONCRETE NAILS AS REFERENCE POINTS

SURVEYOR'S STATEMENT

This Corner Record was prepared by me or under my direction in conformance with

the Land Surveyor's Act on JANUARY 7, 2012

Signed Paul O. Webb (P.L.S.) or R.C.E. No.: 5530



COUNTY SURVEYOR'S STATEMENT

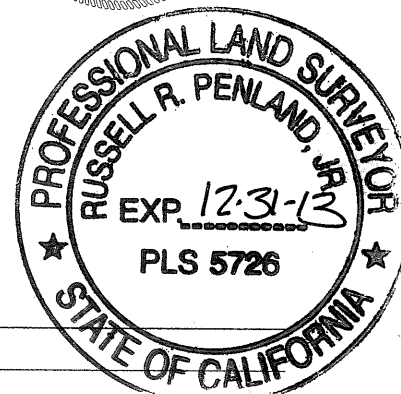
This Corner Record was received 1-11-2012 and examined

and filed 2-3-2012

Signed Russell R. Penland P.L.S. or R.C.E. No.: 5726

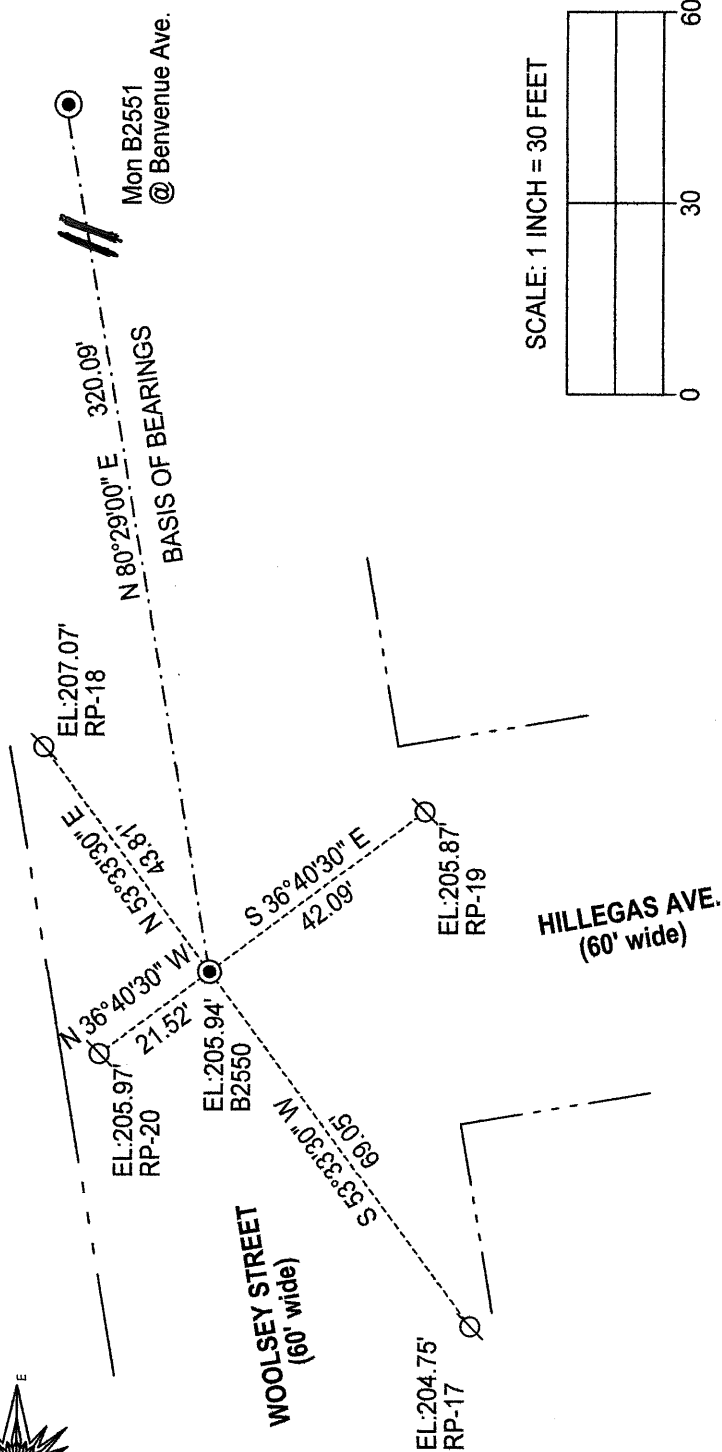
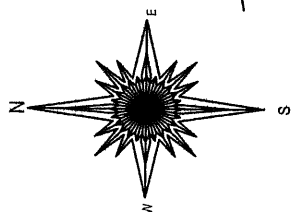
Title COUNTY SURVEYOR

County Surveyor's Comment _____



MY93H5

MONUMENT B2550 TIE-OUT



BASIS OF BEARINGS

The line between monument B2550 and B2551 taken as N 80°29'00" E

LEGEND:

- found City of Berkeley monument in well
- Ø set concrete nail in sidewalk