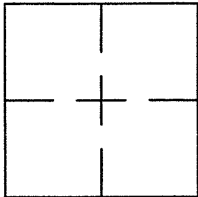


CORNER RECORD

Bk 37 Pg 65

APN No. 057 - 2051 - 009 - 01 (Optional) Document Number CR 4171
 City of BERKELEY County of ALAMEDA, California
 Brief Legal Description MONUMENT REFERENCE AT THE INTERSECTION OF BERKELEY WAY
AND HENRY STREET



CORNER TYPE

Government Corner ☐ Control ☒
 Meander ☐ Property ☐
 Rancho ☐ Other ☐
 Date of Survey MAY 3, 2010

COORDINATES (Optional)

N. _____
 E. _____
 Zone _____ Datum _____
 Elev. _____

Corner - Left as found ☒ Found and tagged ☐ Established ☐ Reestablished ☐ Rebuilt ☐

In compliance with Section 8771 of the Professional Land Surveyors' Act, this corner record is being filed to
 ESTABLISH _____ / REESTABLISH X the position of an existing monument PRIOR _____ / SUBSEQUENT X
 to street or highway reconstruction. (Use this portion only when applicable.)

Identification and type of corner found: Evidence used to identify or procedure used to establish or reestablish the corner:
VERIFIED EXISTING CITY OF BERKELEY MONUMENT B1869 SUBSEQUENT TO
STREET IMPROVEMENT

A description of the physical condition of the monument as found and as set or reset: _____
FOUND CUT CROSS ON STAIRS AS SHOWN ON DOCUMENT NUMBER CR 3475 (BK-31 PG-14)
FOUND CUT CROSS ON TOP OF CURB AS SHOWN ON DOCUMENT NUMBER CR 3475 (BK-31 PG-14)
FOUND MAG NAIL IN ASPHALTIC CONCRETE AS SHOWN ON DOCUMENT NUMBER CR 3475 (BK-31 PG-14)

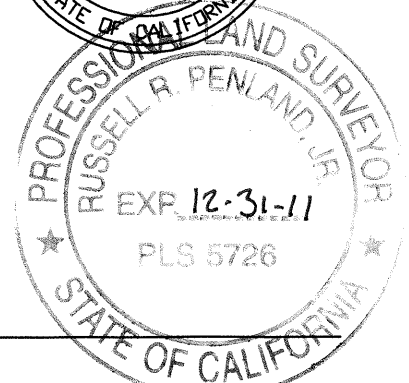
SURVEYOR'S STATEMENT

This Corner Record was prepared by me or under my direction in conformance with
 the Land Surveyors' Act on July 16 2010
 Signed Billy Martin L.S. Number 5797



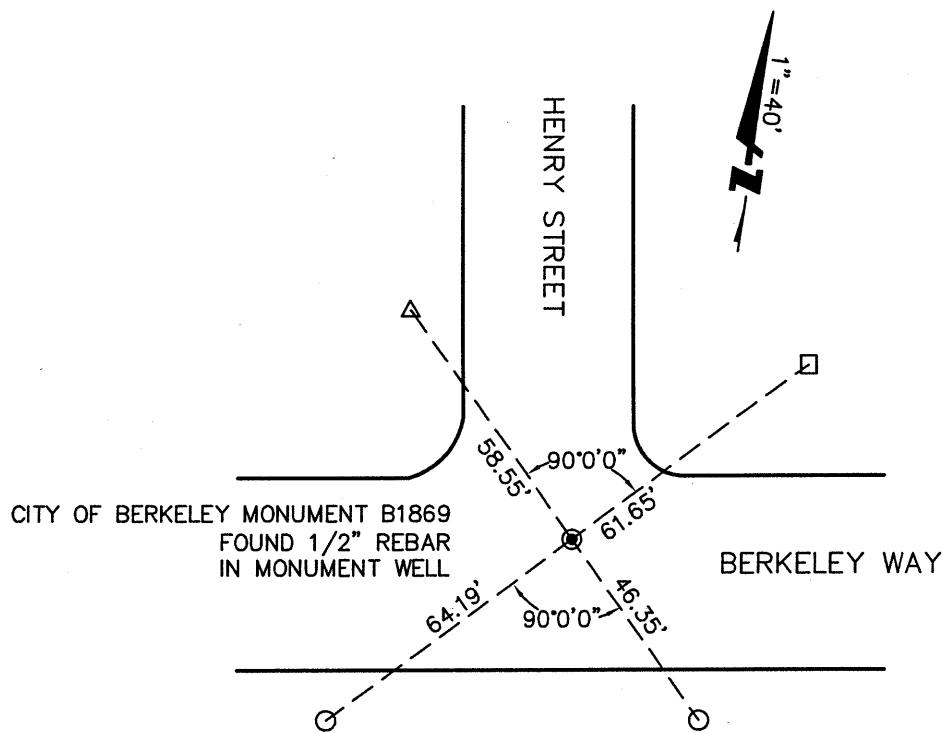
COUNTY SURVEYOR'S STATEMENT

This Corner Record was received 5-21-2010 and examined
 and filed 7-26-2010.
 Signed Russell R. Penland Title: County Surveyor



County Surveyor's Comment _____

PX 5537



LEGEND

- FOUND CUT CROSS ON TOP OF CURB AT PARKING LOT - ○
- FOUND MAG NAIL ON ASPHALTIC CONCRETE - □
- FOUND CUT CROSS ON FIRST STEP OF CONCRETE STAIRS AT 1918 HENRY ST - △
- FOUND CITY OF BERKELEY MONUMENT - ●