

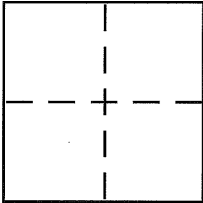
# CORNER RECORD

City of BERKELEY

Document Number CR 3818

County of ALAMEDA, California

Brief Legal Description CITY MONUMENT B 3051



## CORNER TYPE

Government Corner ☐ Control ☒  
Meander ☐ Property ☐  
Rancho ☐ Other ☐  
Date of Survey 6-25-09

## COORDINATES (Optional)

N. \_\_\_\_\_  
E. \_\_\_\_\_  
Zone \_\_\_\_\_ NAD27 ☐ NAD83 ☐  
NAD83 Epoch \_\_\_\_\_  
Elev. \_\_\_\_\_  
Vert. Datum: NGVD29 ☐ NAVD88 ☐  
Meas. Units: Metric ☐ Imperial ☐

Corner - Left as found ☒ Found and tagged ☐ Established ☐ Reestablished ☐ Rebuilt ☐

Identification and type of corner found: Evidence used to identify or procedure used to establish or reestablish the corner:

SEE PAGE 2

A description of the physical condition of the monument as found and as set or reset:

SEE PAGE 2

## SURVEYOR'S STATEMENT

This Corner Record was prepared by me or under my direction in conformance with the Land Surveyor's Act on JULY 2 2009

Signed \_\_\_\_\_ P.L.S or R.C.E. No. \_\_\_\_\_

## COUNTY SURVEYOR'S STATEMENT

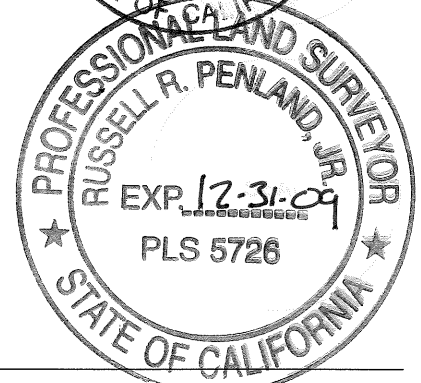
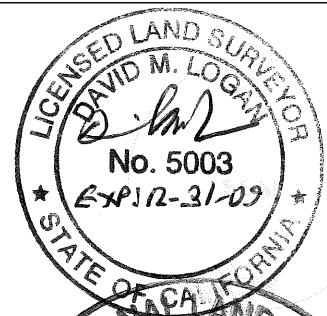
This Corner Record was received 1-20-09

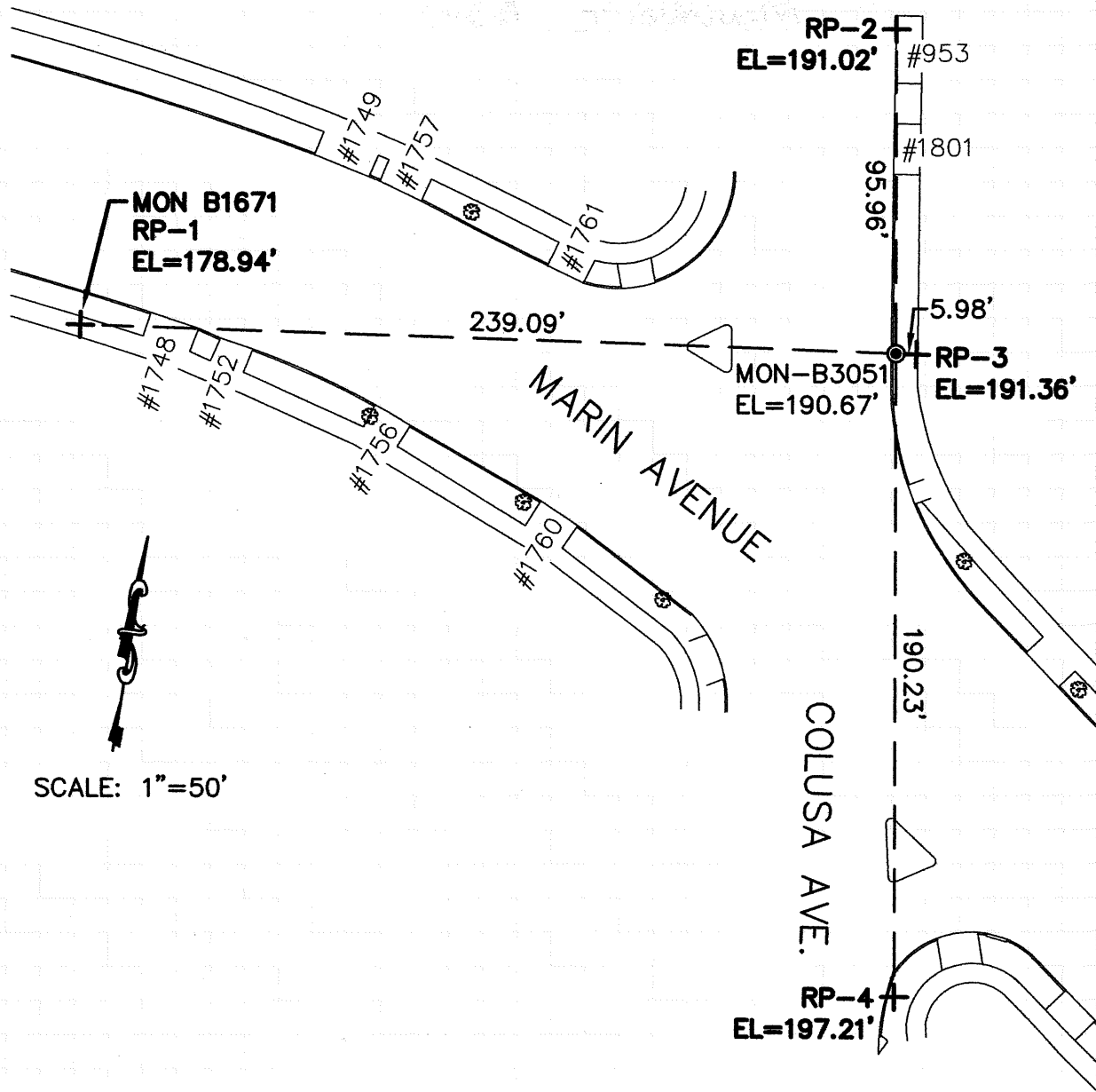
and examined and filed 8-25-09

Signed Russell R. Penland P.L.S or R.C.E. No. 5726

Title COUNTY SURVEYOR

County Surveyor's Comment \_\_\_\_\_





#### LEGEND

- BRASS DISC EAST BAY MUNICIPAL UTILITY DISTRICT MONUMENT (IN E.B.M.U.D. MONUMENT WELL)
- ⊕ REFERENCE CROSS ON SIDEWALK

#### NOTES:

THE EXISTING MONUMENT AS SHOWN IS REFERENCED BY STRAIGHT LINES BETWEEN RP-1 TO RP-3 AND RP-2 TO RP-4.

MONUMENT AND R.P. DATUM - EAST BAY MUNICIPAL UTILITY DISTRICT "AQUEDUCT DATUM"