

STANDARD ACCESSIBLE MOUNTING HEIGHTS AND CLEARANCES

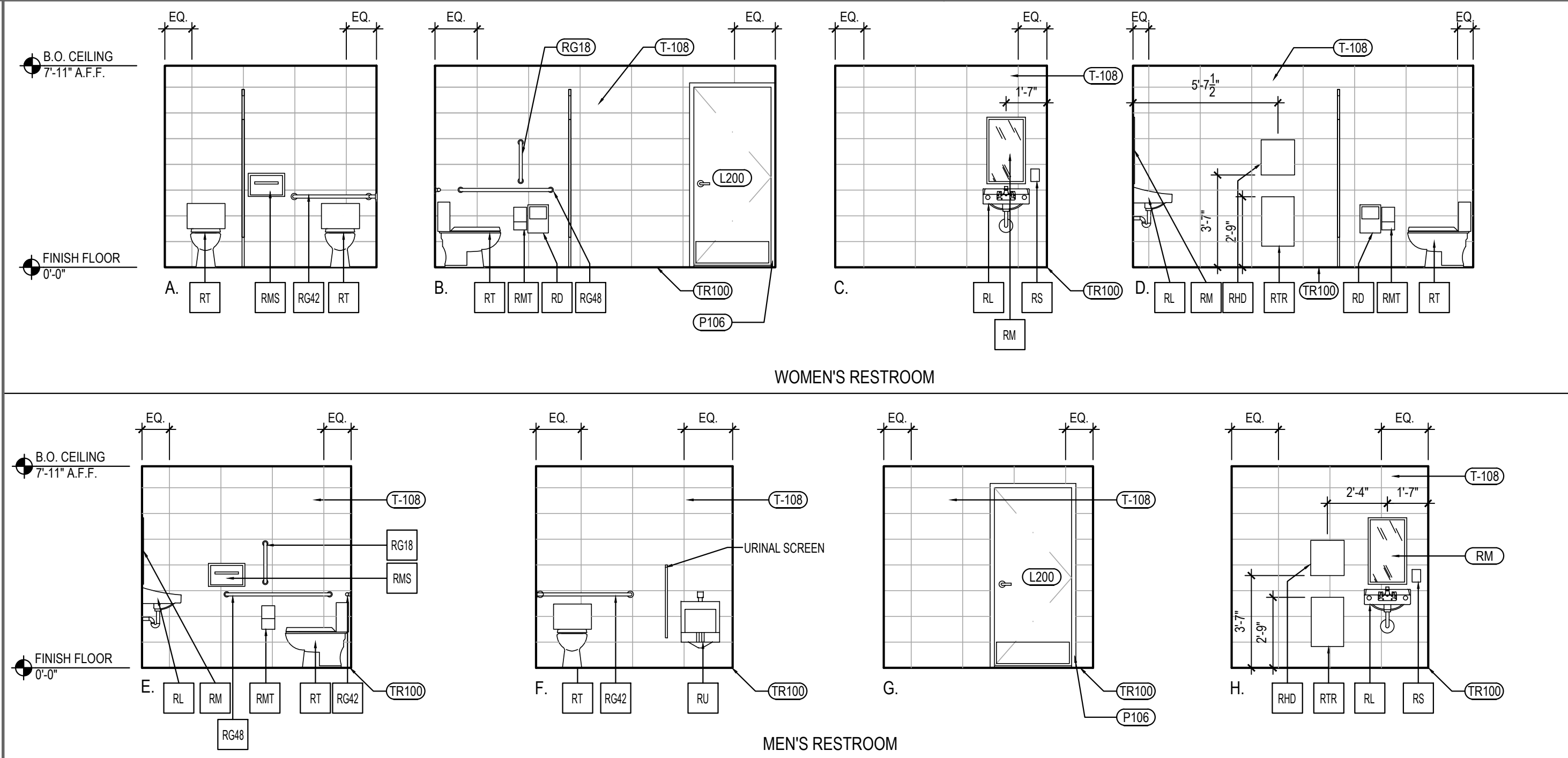
4

RESTROOM DOOR SIGNS

3

Scale= NTS A-503

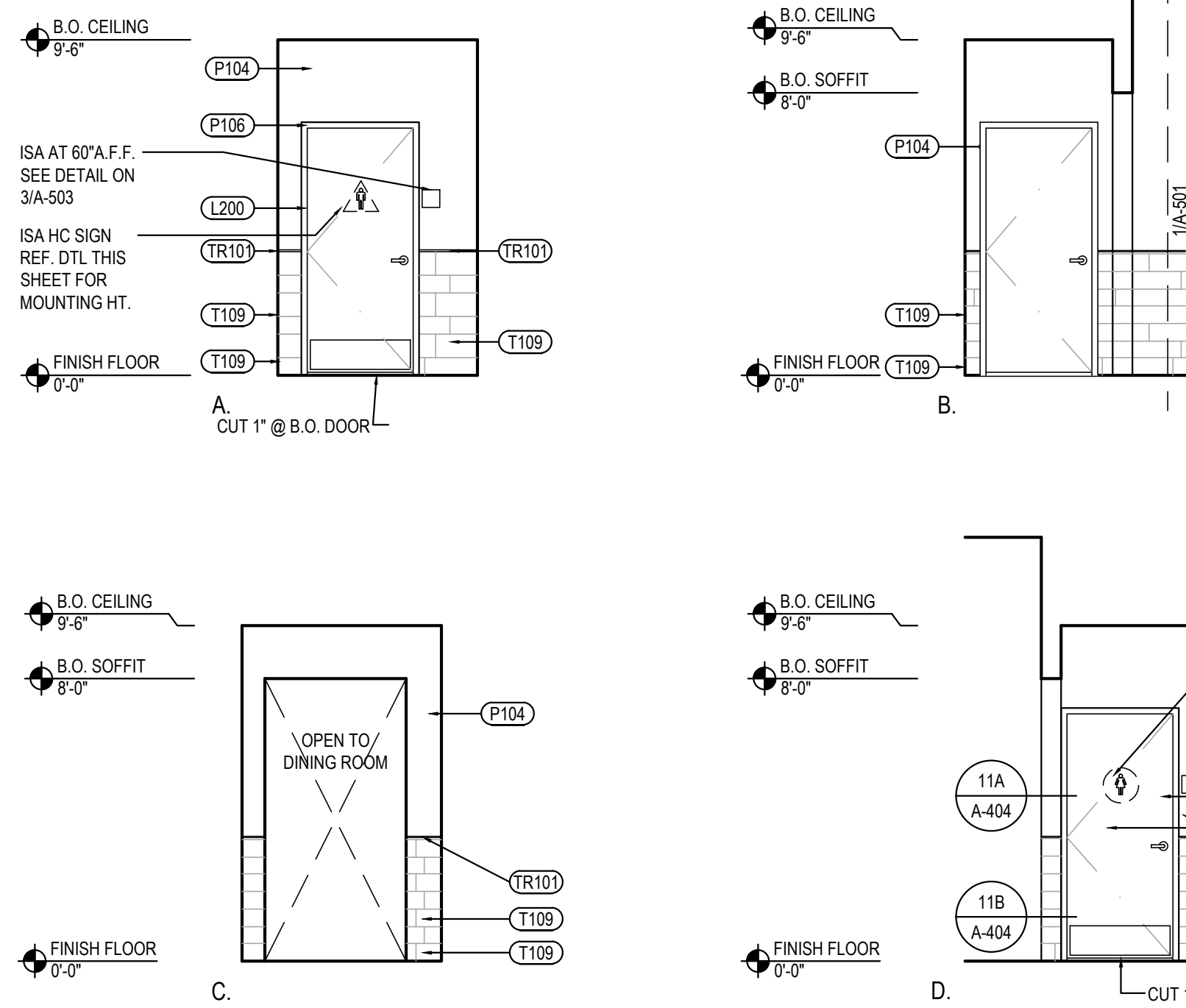
Scale= 1" = 1'-0" A-503



RESTROOM ELEVATIONS

2

Scale= 1/4" = 1'-0" A-503



RESTROOM VESTIBULE ELEVATIONS

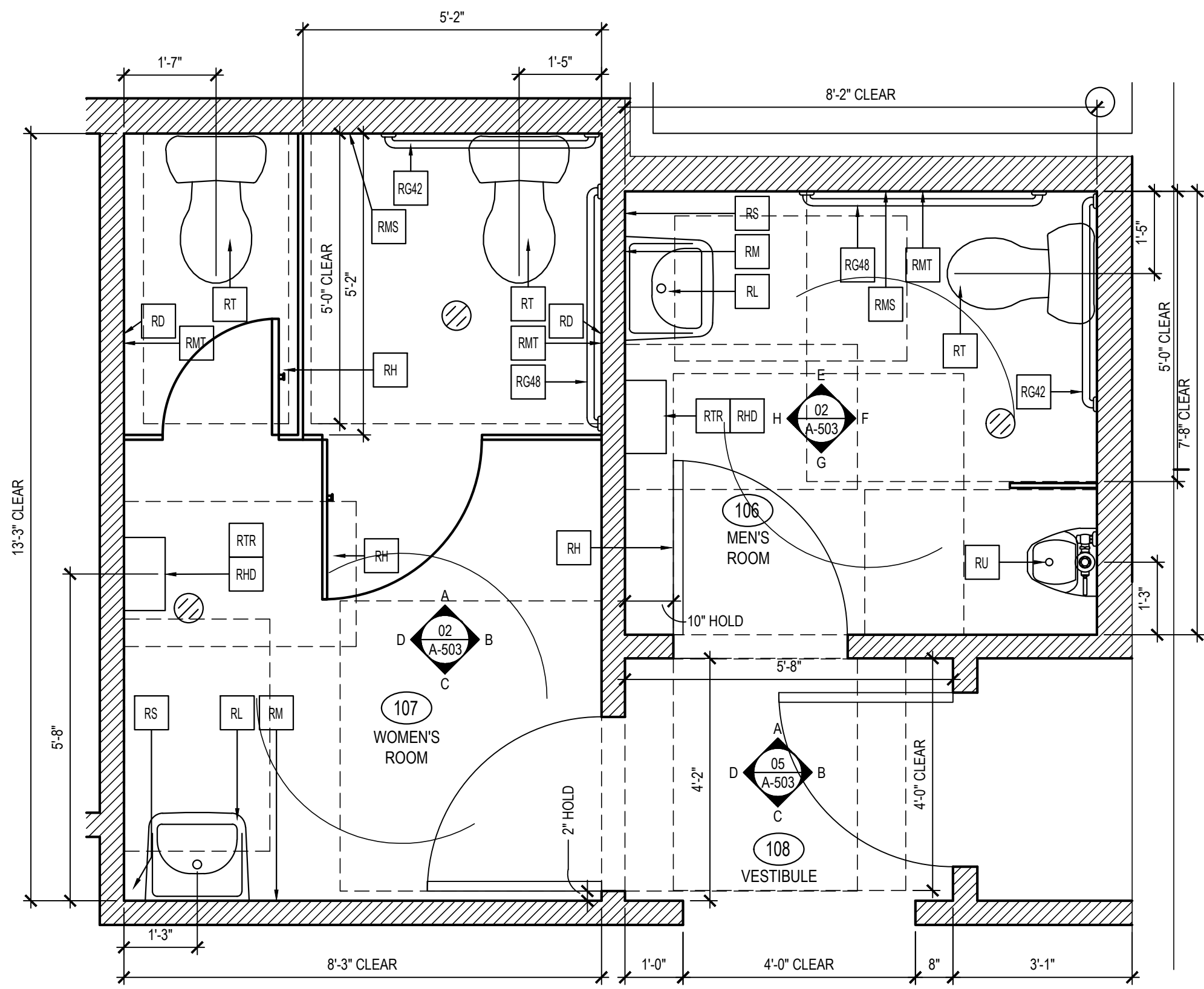
5

Scale= 1/4" = 1'-0" A-503

TOILET ACCESSORY SCHEDULE

NO	DESCRIPTION
RG42	BOBRICK GRAB BAR, 42" LONG B-6806 1 1/2", SATIN FINISH; FURNISHED BY LOCKNET, INSTALLED BY G.C.
RG48	BOBRICK GRAB BAR, 48" LONG B-6806 1 1/2" SATIN FINISH; FURNISHED BY LOCKNET, INSTALLED BY G.C.
RG18	BOBRICK GRAB BAR, 18" LONG B-6806 1 1/2" SATIN FINISH; FURNISHED BY LOCKNET, INSTALLED BY G.C.
RM	BOBRICK CHANNEL FRAME MIRROR B-165 (1836) 18"X36" STAINLESS STEEL CHANNEL FRAME FURNISHED BY LOCKNET, INSTALLED BY G.C.
RS	SOAP DISPENSER (BY VENDOR)
RMS	BOBRICK SEAT COVER DISPENSER B-221 STAINLESS STEEL, SATIN FINISH FURNISHED BY LOCKNET, INSTALLED BY G.C.
RTR	BOBRICK SURFACE MOUNTED TRASH RECEPTACLE MODEL # B-277; FURNISHED BY LOCKNET, INSTALLED BY G.C.
RHD	PAPER TOWEL DISPENSER FURNISHED BY PANDA EXPRESS, INSTALLED BY G.C.
RMT	BOBRICK MULTI-ROLL TOILET TISSUE DISPENSER B-2888 STAINLESS STEEL, SATIN FINISH FURNISHED BY LOCKNET, INSTALLED BY G.C.
RT	AMERICAN STANDARD CADET RIGHT HEIGHT ELONGATED TOILET 2467.016 TLT, 4142.600 TANK, AMERICAN STANDARD #5321.110 SEAT, COLOR: WHITE, TRIP TO BE ON OPEN SIDE. FURNISHED AND INSTALLED BY G.C.
RL	ZURN WALL HUNG LAVATORY Z5344, 20" X 18" VITREOUS CHINA, WITH 4" CENTER FAUCET HOLES & ZURN Z-1231 CONCEALED ARM CARRIER FURNISHED AND INSTALLED BY G.C.
RU	TOTO URINAL UT106UG801 URINAL, TEU1UN12#CP ECO POWER GPF SENSOR FLUSH VLV. FURNISHED AND INSTALLED BY G.C.
RD	BOBRICK SURFACE-MOUNTED SANITARY NAPKIN DISPOSAL B-254 STAINLESS STEEL, SATIN FINISH FURNISHED BY LOCKNET, INSTALLED BY G.C.
RH	BOBRICK SURFACE-MOUNTED CLOTHES HOOK AND BUMPER B-233 SOLID ALUMINUM CASTING, MATTE FINISH, INSIDE OF RESTROOM DOORS FURNISHED BY LOCKNET, INSTALLED BY G.C.

* INSULATE ALL PIPES (TRAP & HOT WATER) AT ACCESSIBLE LAVATORIES.



ENLARGED RESTROOM PLANS

1

Scale= 1/2" = 1'-0" A-503

NOT USED

7

Scale= 1" = 1'-0" A-503



PANDA EXPRESS, INC.
1683 Walnut Grove Ave.
Rosemead, California
91770
Telephone: 626.799.9898
Facsimile: 626.372.8288

All ideas, designs, arrangement and plans indicated or represented by this drawing are the property of Panda Express Inc. and were created for use on this specific project. None of these ideas, designs, arrangements or plans may be used by or disclosed to any person, firm, or corporation without the written permission of Panda Express Inc.

REVISIONS:

1		
2		
3		
4		
5		
6		
7		
8		
9		
10		

ISSUE DATE:

1st	DEVELOPER REVIEW	07.26.19
2nd	SITE PLAN SUBMITTAL	08.26.19
3rd	SITE COMMENTS	09.05.19
4th	ISSUE FOR PERMIT	10.01.19
5th	ISSUE FOR BID	11.07.19

DRAWN BY: PM / KL / EA

PANDA PROJECT #: S8-20-D7163

ARCH PROJECT #: 19027



Heights Venture
ARCHITECTURE + DESIGN

HOUSTON 1111 North Loop West, Suite 800
Houston, Texas 77008
713.869.1163 V
DALLAS 5741 Legacy Drive, Suite 320
Plano, Texas 75024
972.490.7292 V

PANDA EXPRESS

2096 INTERSTATE DR.
OPELIKA, AL 36801
3600 FSDT

TWW REMODEL

A-503

ENLARGED RESTROOM
PLANS AND ELEVATIONS

TRUE WARM & WELCOME

BID ISSUE