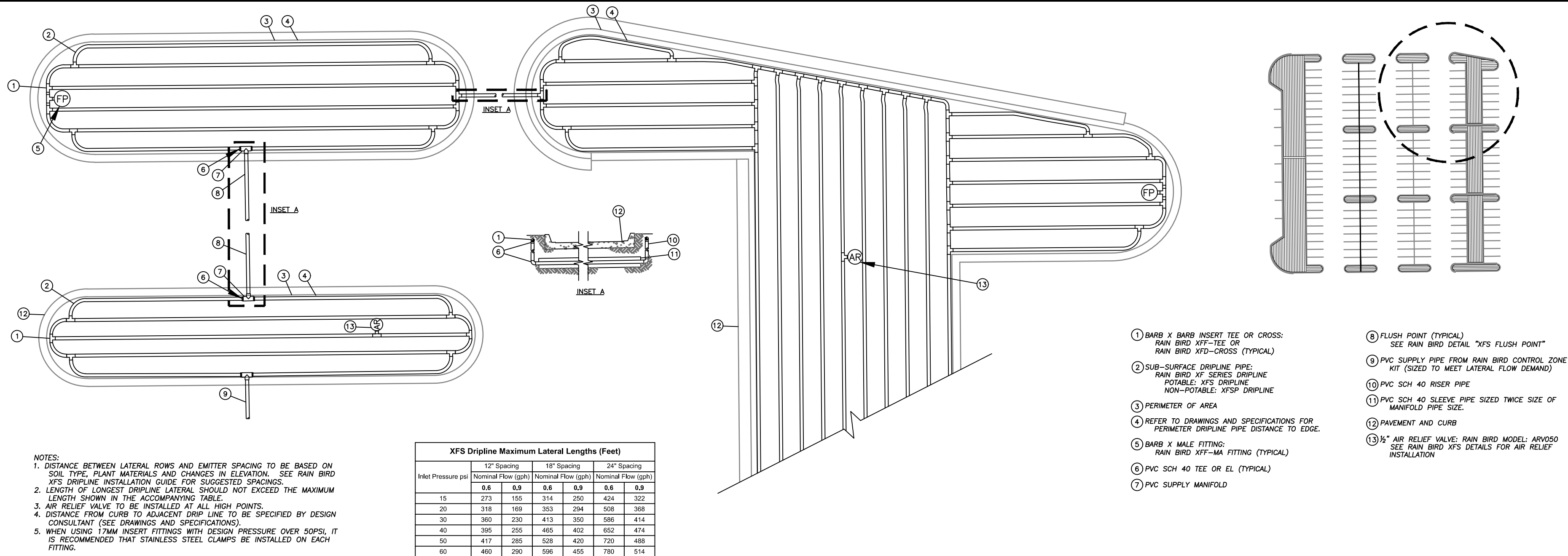
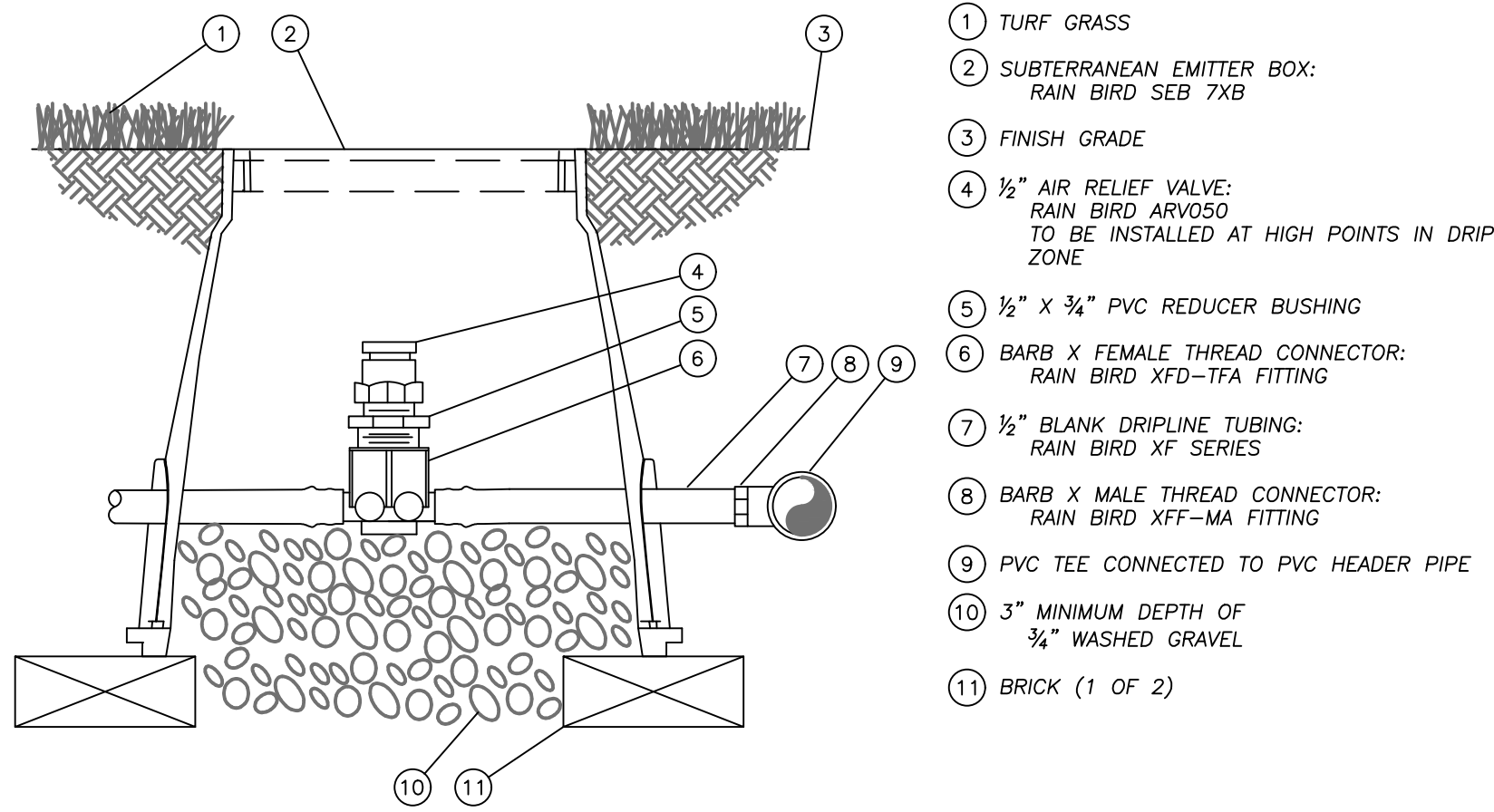
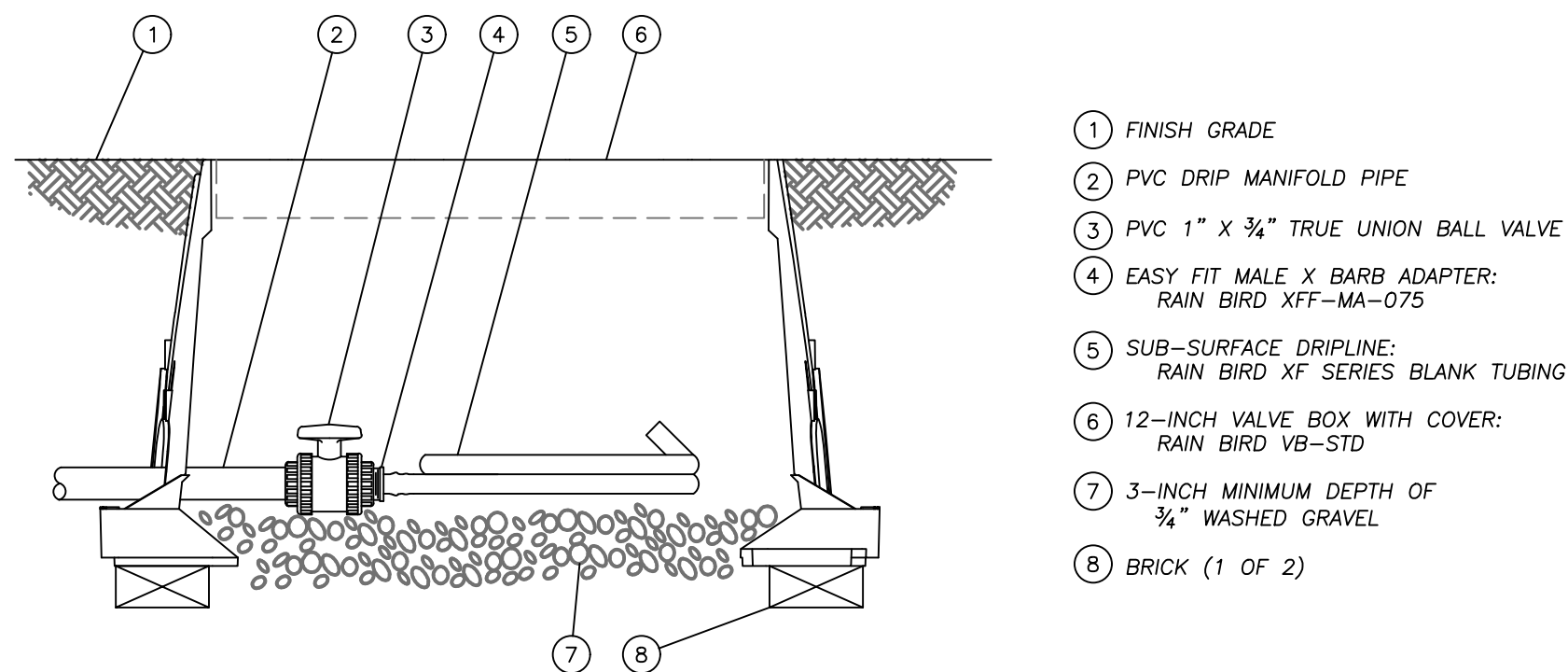


Jun 24, 2020 -- 11:30am Plotted By: turf.yoder V:\026800--Panda Express - Master 2019\026800.05--Canal Winchester, OH\04--DWG\Eng\Sheet\026800.05--SUTS--LSC--DTLS.dwg Layout: IRRIGATION DETAILS 2



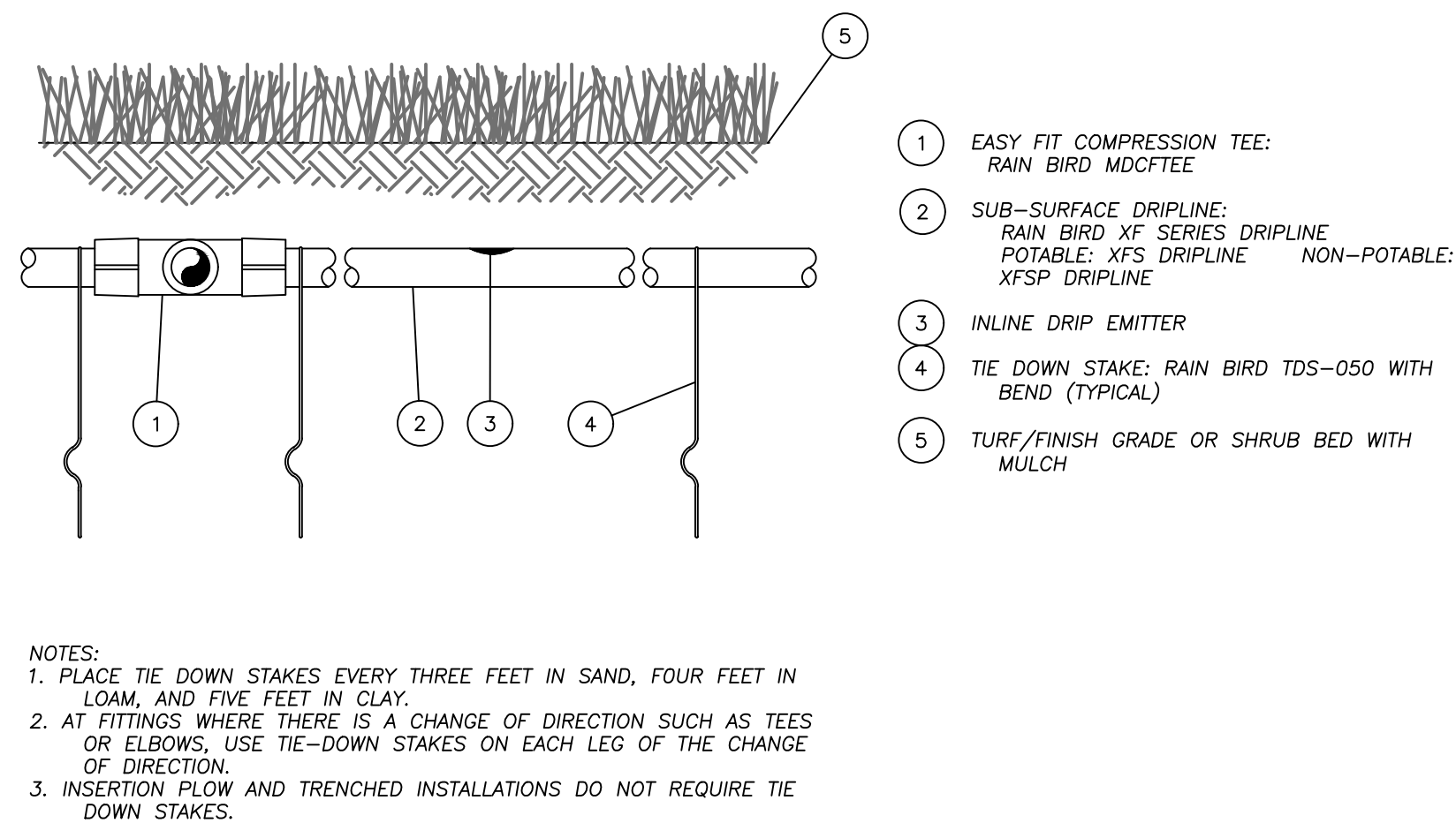
907 TYPICAL ISLAND DRIPLINE LAYOUT DETAIL

Not to Scale



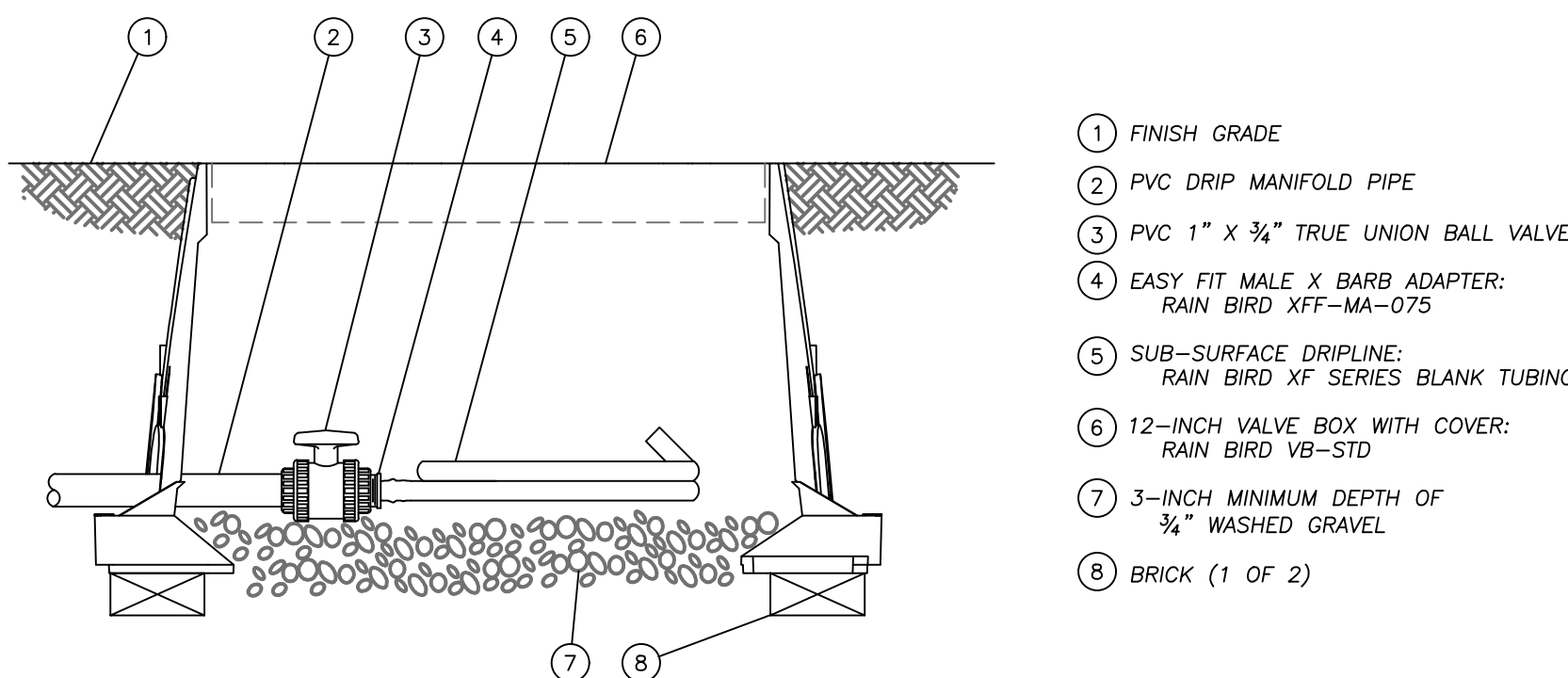
908 DRIPLINE FLUSHPOINT W/BALL VALVE DETAIL

Not to Scale



909 DRIPLINE AIR RELIEF VALVE DETAIL

Not to Scale



910 XFS SUB SURFACE DRIPLINE BURIAL DETAIL

Not to Scale

911 XFS DRIPLINE FLUSH POINT W/BALL VALVE

Not to Scale



PANDA EXPRESS, INC.
1683 Walnut Grove Ave.
Rosemead, California
91770
Telephone: 626.799.9898
Facsimile: 626.372.8288

All ideas, designs, arrangement and plans indicated or represented by this drawing are the property of Panda Express Inc. and were created for use on this specific project. None of these ideas, designs, arrangements or plans may be used by or disclosed to any person, firm, or corporation without the written permission of Panda Express Inc.

REVISIONS:

ISSUE DATE:

1st	PERMIT/BID SET	01-13-20

DRAWN BY: NAB

PANDA PROJECT #: S8-20-D6790
ARCH PROJECT #: 18044.035



hckloverarchitect
8813 Penrose Lane, Suite 400,
Lenexa, KS 66219
ph: 913.649.8181 • fx: 913.649.1275

PANDA EXPRESS

TRUE WARM & WELCOME 2300 R1
CANAL ST. & WINCHESTER BLVD
CANAL-WINCHESTER, OH 43110

IRRIGATION DETAILS 2

L3.1

TRUE WARM & WELCOME 2300 R1

BHC RHODES
Civil Engineering • Surveying • Utilities
7101 College Blvd., Suite 400
Overland Park, Kansas 66210
p. (913) 663-1900 f. (913) 663-1633
BHC RHODES is a trademark of Brungardt Honanich & Company, P.A.

01-13-20 PERMIT/BID SET