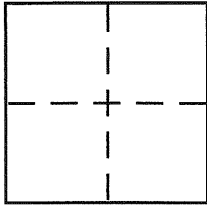


CORNER RECORDDocument Number CR 2070City of DUBLINCounty of ALAMEDA, CaliforniaBrief Legal Description RE-ESTABLISHED TWO STREET MONUMENTS DESTROYED BY CONSTRUCTION**CORNER TYPE**

Government Corner ☐ Control ☐
 Meander ☐ Property ☐
 Rancho ☐ Other ☒
 Date of Survey SEPTEMBER 19, 2003

COORDINATES (Optional)

N. _____
 E. _____
 Zone _____ NAD27 ☐ NAD83 ☐
 NAD83 Epoch _____
 Elev. _____
 Vert. Datum: NGVD29 ☐ NAVD88 ☐
 Meas. Units: Metric ☐ Imperial ☐

Corner – Left as found ☐ Found and tagged ☒ Established ☐ Reestablished ☒ Rebuilt ☐

Identification and type of corner found: Evidence used to identify or procedure used to establish or reestablish the corner:

RE-ESTABLISHED STREET MONUMENTS PER RECORD OF SURVEY NO. 385 BK. 8 R.S.
PGS. 27-29 & PER PARCEL MAP 7355 BK. 246 P.M. PGS. 35-42 RESET MONUMENTS
AS NOTED.

A description of the physical condition of the monument as found and as set or reset: SEE PLAT

SURVEYOR'S STATEMENT

This Corner Record was prepared by me or under my direction in conformance with
 the Land Surveyor's Act on NOVEMBER 24 2003

Signed [Signature] P.L.S. or R.C.E. No. 5412

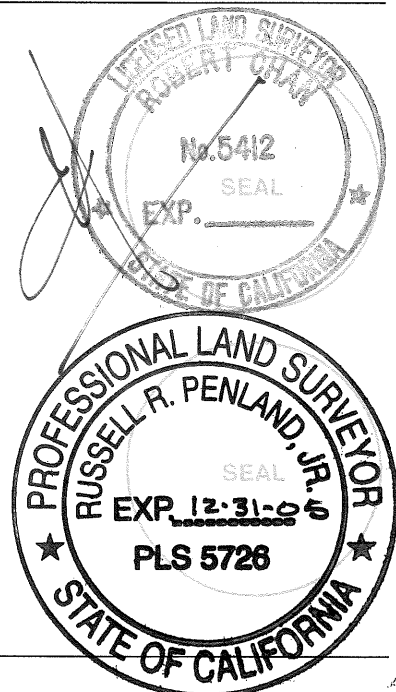
COUNTY SURVEYOR'S STATEMENT

This Corner Record was received 12.11.03
 and examined and filed 1.30.04

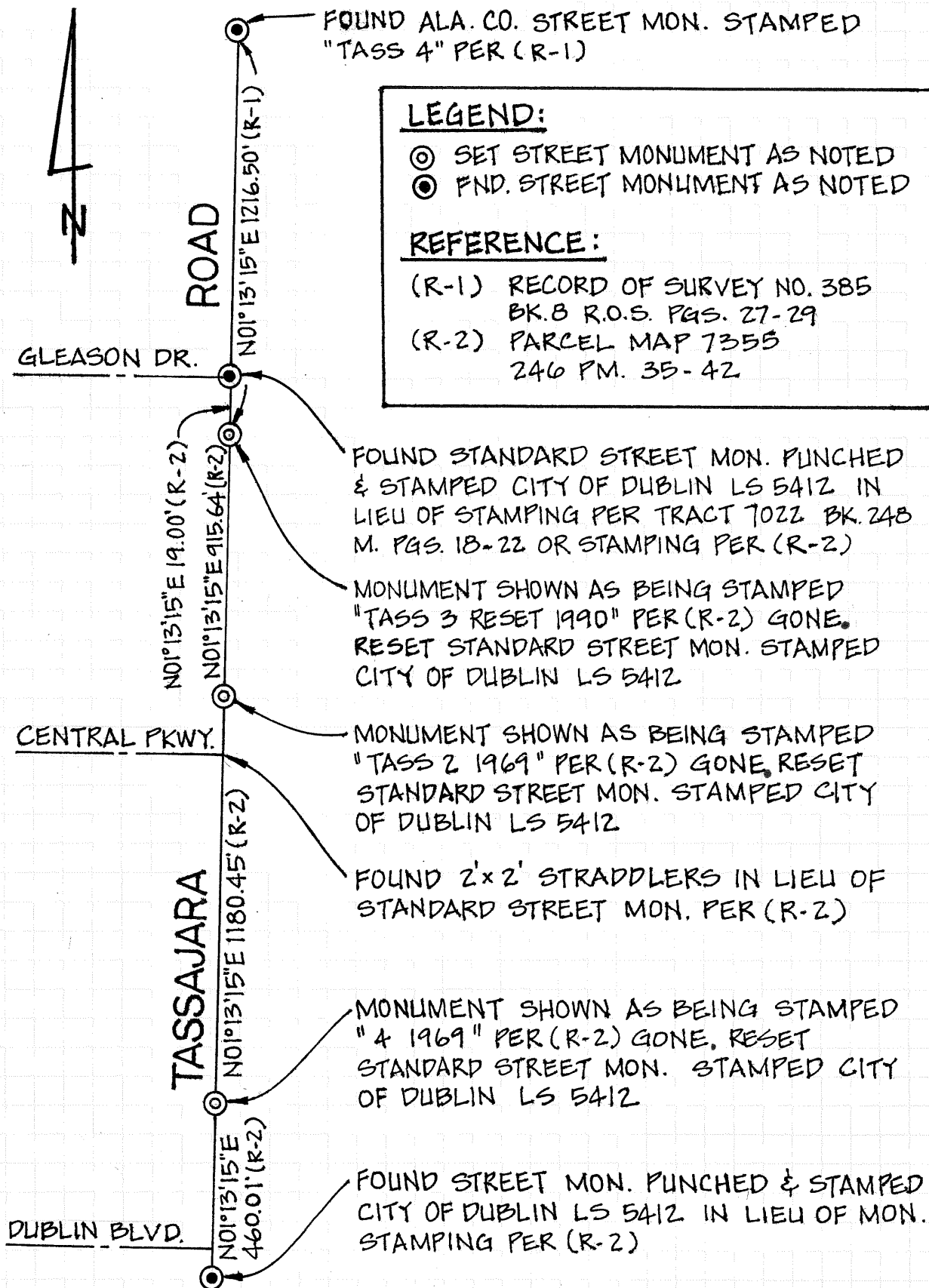
Signed [Signature] P.L.S. or R.C.E. No. 5726

Title COUNTY SURVEYOR

County Surveyor's Comment _____



X



NOT TO SCALE