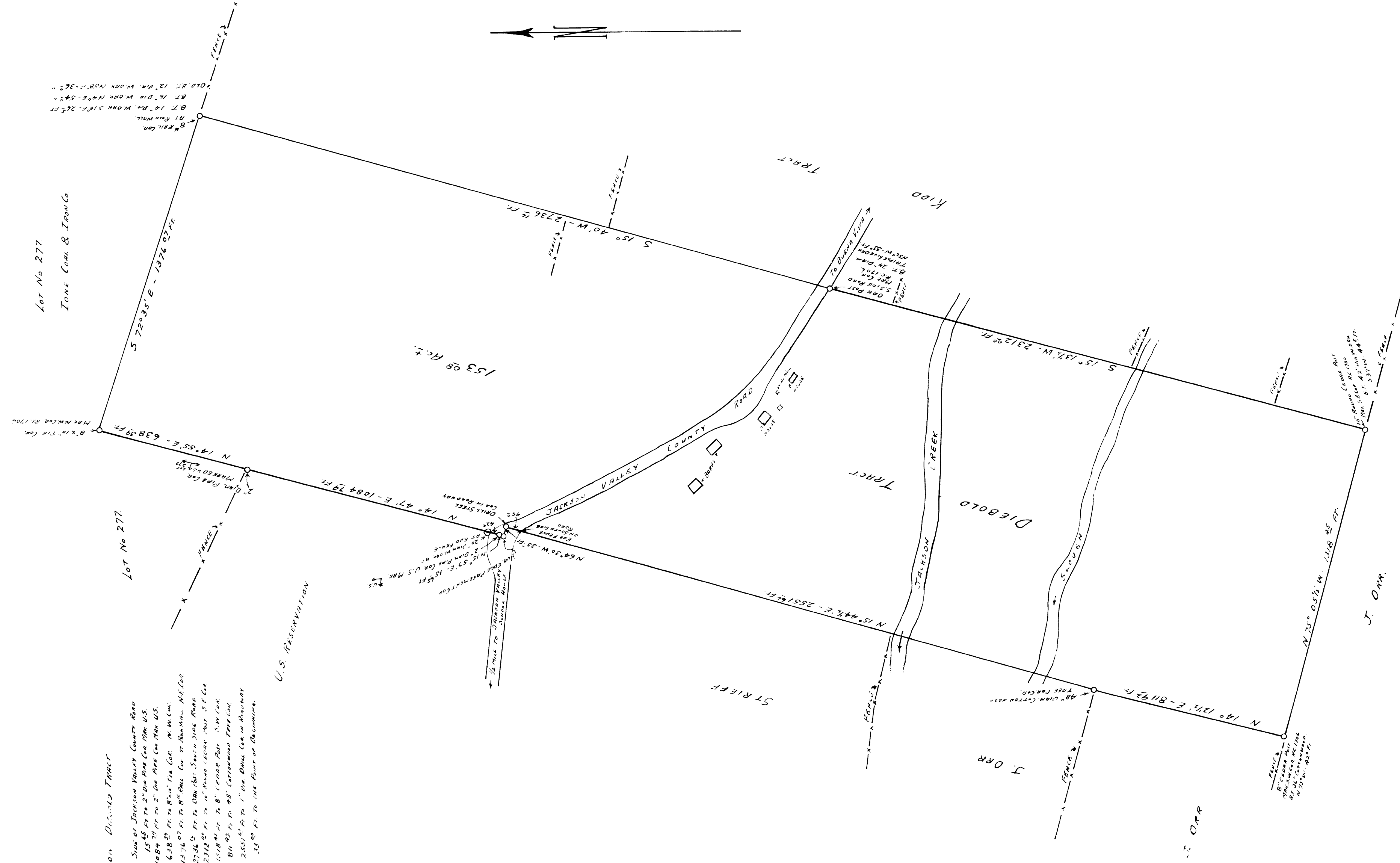


DESCRIPTION DIEBOLD TRACT

- Commence at NW corner of Jackson Valley County Road
 (1) N 15° 55' E - 15.45 ft to 2nd Pin Co. 17th U.S.
 (2) N 14° 45' E - 108.94 ft to 2nd Pin Co. 17th U.S.
 (3) N 14° 55' E - 638.51 ft to 8th Pin Co. 17th U.S.
 (4) S 72° 35' E - 1376.07 ft to 8th Pin Co. 17th U.S.
 (5) S 15° 05' W - 2516.07 ft to 1st Pin Co. 17th U.S.
 (6) S 15° 05' W - 2516.07 ft to 1st Pin Co. 17th U.S.
 (7) N 14° 55' E - 811.45 ft to 1st Pin Co. 17th U.S.
 (8) N 15° 45' E - 255.64 ft to 1st Pin Co. 17th U.S.
 (9) N 15° 45' E - 255.64 ft to 1st Pin Co. 17th U.S.
 (10) N 15° 45' E - 255.64 ft to 1st Pin Co. 17th U.S.

U.S. RESERVATION



PLAT OF
 DIEBOLD TRACT 153.08 AC
 IN ARROYO SECO RANCHO, AMADOR COUNTY, CAL.
 NEAR BUENA VISTA, CALIFORNIA
 SCALE 1" = 300' DATE FEB 21, 1935
 SURVEY & PLAT BY *Walter H. Rapp* AC 1706
 AMADOR COUNTY SURVEYOR