

GENERAL PLUMBING NOTES

- A. FOOD SERVICE EQUIPMENT: REFER TO OTHER PORTIONS OF PLANS AND SPECIFICATIONS FOR FURTHER INFORMATION ABOUT FOOD SERVICE ITEMS FURNISHED AND WORK PERFORMED BY OTHERS. VERIFY ROUGH-IN REQUIREMENTS WITH EQUIPMENT FURNISHED.
- B. HEALTH DEPARTMENT: COMPLY WITH LOCAL HEALTH DEPARTMENT (HD) REGULATIONS.WHEREVER POSSIBLE, INSTALL ALL PIPING CONCEALED, CONFORM TO HD REQUIREMENTS FOR LOCATIONS OF FLOOR SINKS.
- C. WORKMANSHIP SHALL BE FIRST CLASS, ACCEPTABLE TO OWNER.
- D. MAKE COMPLETE: PROVIDE ITEMS AND WORK AS REQUIRED TO COMPLETE THE INSTALLATION OF PLUMBING SYSTEMS TO FIXTURES AND EQUIPMENT: TRAPS, STRAINERS, GAUGES, GAS AND WATER PRESSURE REGULATORS, FLEXIBLE CONNECTIONS, STOP VALVES, UNIONS, ETC. PROVIDE AND CONNECT PLUMBING PIPE FROM ROUGH-INS TO ITEMS AS SHOWN, SPECIFIED AND REQUIRED.
- E. VERIFY LOCATIONS: EXISTING PIPING, POC SHOWN ON DRAWINGS HAS BEEN LOCATED FROM INFORMATION PROVIDED BY OTHERS. VERIFY EXACT LOCATION ON JOB SITE BEFORE START WORKING.
- F. BACKFLOW PREVENTION: PROVIDE BACKFLOW PREVENTERS (BFP) IN WATER LINES ONLY IF REQUIRED BY LOCAL AUTHORITIES. USE DEVICES OF TYPE (VACUUM BREAKER, DOUBLE CHECK, REDUCED PRESSURE) AND MANUFACTURER APPROVED BY LOCAL AUTHORITIES, ONLY IN LOCATIONS REQUIRED.
- G. WATER CONSERVATION: CONTRACTOR SHALL PROVIDE WATER FLOW LIMITING FEATURES ON FIXTURES IF/AS REQUIRED BY LOCAL AUTHORITIES.
- H. COLD WATER: CONNECT TO DOMESTIC COLD WATER VALVED STUB. EXTEND COLD WATER PIPE, SUSPENDED FROM STRUCTURE ABOVE CEILING AND DOWN IN PARTITIONS, TO SERVE FIXTURES AND EQUIPMENT.
- I. HOT WATER: PROVIDE COMMERICAL TYPE WATER HEATER, DESIGN PER PLAN. RUN HOT WATER PIPE, SUSPENDED FROM STRUCTURE ABOVE CEILING AND DOWN IN PARTITIONS TO SERVE FIXTURE AND EQUIPMENT.
- J. SANITARY: CONNECT TO SANITARY WASTE LINE.
- K. BRANCHES: PROVIDE HOT AND/OR COLD WATER PIPES DOWN IN PARTITION TO SERVE VARIOUS EQUIPMENT PER "KITCHEN EQUIPMENT SCHEDULE".
- L. SODA CONDUIT: PROVIDE 4" CONDUIT BELOW FLOOR FROM SODA STORAGE TO SODA DISPENSER.
- M. CONDENSATE: PROVIDE 1" INSULATED PRIMARY AND SECONDARY CONDENSATE DRAIN PIPES FROM FAN-COIL UNIT ABOVE CEILING TO NEAREST FLOOR SINK.
- N. GAS SERVICE: PROVIDE ALL PIPES, VALVES AND CONNECTION TO GAS METER, FOR NATURAL GAS SERVICE, COORDINATE WITH GAS UTILITY COMPANY FOR METER REQUIREMENTS, PERMITS AND FEES. ROUTE PIPE AS REQUIRED, SUSPENDED FROM STRUCTURE ABOVE. USE ALL WELDED PIPE, FITTINGS, AND JOINTS IN CEILING SPACE AND IN WALL AS PER LOCAL CODE.
- O. INDIRECT DRAIN: AN AIR GAP TWICE THE SIZE OF THE DRAIN LINE MUST BE PROVIDED BETWEEN THE DRAIN LINE AND THE SANITARY SEWER.
- P. LIQUID WASTE FROM ALL EQUIPMENT MUST BE DISCHARGED TO THE SANITARY SEWER.
- Q. FLOOR DRAIN MUST BE PLACED ADJACENT TO EQUIPMENT WHICH DISCHARGES WASTE. FLOOR DRAIN INSTALLATION MUST NOT INTERFERE WITH PROPER FLOOR MAINTENANCE.
- R. EXPOSED UTILITY LINES ON FLOORS ARE PROHIBITED. UTILITY LINES MUST NOT BE UNNECESSARILY EXPOSED ON WALLS.
- S. ALL WATER AND GAS CONNECTIONS TO ALL PLUMBING FIXTURES TO BE HARD PIPED. NO FLEX PIPE.
- T. ALL PIPES 6" A.F.F., NO FLOOR SUPPORTS ALLOWED.
- U. ALL WATER PIPES IN EXPOSED AREAS OUTSIDE WALLS AND BELOW CEILING MUST BE COPPER UNLESS NOTED OTHERWISE.

PLUMBING SPECIFICATIONS

1. WORK INCLUDES CONNECTION OF PLUMBING UTILITIES TO DEVELOPER OR LANDLORD'S UTILITIES AND INSTALLATION OF A COMPLETE PLUMBING SYSTEM WITHIN SPACE. PROVIDE NEW MATERIALS, FITTINGS, ACCESSORIES, FIXTURES AND EQUIPMENT NECESSARY FOR A COMPLETE AND PROPERLY FUNCTIONING SYSTEM AS SHOWN ON PLANS AND AS REQUIRED. WORK INCLUDES FINAL CONNECTIONS TO EQUIPMENT AND FIXTURES PROVIDED BY OTHERS. FURNISH ALL NEW MATERIALS. WORK SHALL BE PERFORMED BY EXPERIENCED TRADESMEN, AND THEIR WORKMANSHIP SHALL BE HIGH STANDARD, ACCEPTABLE TO OWNER.
2. CODES: ALL WORK SHALL BE IN ACCORDANCE WITH LOCAL CODES, SAFETY REGULATIONS, OR ORDINANCES. PAY FOR ANY PERMITS REQUIRED, AND CALL FOR ANY REQUIRED INSPECTIONS TO BE MADE BY LOCAL AUTHORITIES.
3. INTENT OF DRAWINGS IS TO INDICATE GENERAL EXTENT OF WORK REQUIRED FOR PROJECT. DRAWINGS FOR PLUMBING WORK ARE DIAGRAMMATIC, SHOWING GENERAL LOCATION, TYPE, PIPING, FIXTURES AND EQUIPMENT REQUIRED. PROVIDE ALL FITTINGS, ACCESSORIES, OFFSETS, AND MATERIALS NECESSARY TO FULFILL INTENT OF PLANS. DRAWINGS SHALL NOT BE SCALED FOR EXACT MEASUREMENTS. USE DIMENSIONED ARCHITECTURAL DRAWINGS. REFER TO MANUFACTURER'S STANDARD ROUGH-IN DRAWINGS FOR PLUMBING FIXTURES, AND TO ARCHITECTURAL DRAWINGS FOR EXACT LOCATIONS.
4. FSE ROUGH-IN DRAWINGS: REFER TO ROUGH-IN DRAWINGS FURNISHED BY THE FOOD SERVICE EQUIPMENT SUPPLIER, FOR EXACT LOCATION OF WATER PIPING SUPPLIES AND DRAIN LOCATIONS TO SERVE FOOD SERVICE EQUIPMENT, DO NOT LAYOUT WORK OF THIS SECTION WITHOUT SUCH DRAWINGS.
5. COORDINATE WITH WORK OF OTHER SECTIONS AND TRADES, WITH EQUIPMENT FURNISHED BY OTHERS, AND WITH CONSTRAINTS OF EXISTING CONDITIONS OF PROJECT SITE.
6. MISCELLANEOUS EXPENSES SUCH AS HOOK-UP CHARGES, PERMITS, INSPECTIONS, AND OTHER EXPENSES RELATED TO A COMPLETE AND FUNCTIONING SYSTEM ARE INCLUDED AS PART OF THIS SECTION.
7. PIPING SYSTEMS: GENERAL: ALL PIPING SHALL BE RUN PARALLEL TO BUILDING LINES AND SUPPORTED AND ANCHORED AS REQUIRED TO FACILITATE EXPANSION AND CONTRACTION. ALL PIPING SHALL BE CONCEALED EXCEPT IN UNFINISHED SPACES. INSTALL AS REQUIRED TO MEET ALL CONSTRUCTION CONDITIONS AND TO ALLOW FOR INSTALLATION OF OTHER WORK INCLUDING DUCTS AND ELECTRICAL CONDUIT. AT ALL CONNECTIONS BETWEEN FERROUS PIPING AND NONFERROUS PIPING, PROVIDE AN INSULATING DIELECTRIC UNION. SEAL PIPE PENETRATIONS OF FIVE FLOORS AND THEROWALLS WITH FIREPROOF PUTTY OR GROUT. PROVIDE SUMMER OR EQUIVALENT PIPE HANGING SYSTEM IN CHASES. PROVIDE HANGERS AS RECOMMENDED BY HANGER MANUFACTURER AND MSS-SP-58, 69 AND 89.
8. WASTE PIPING: PROVIDE ALL DRAIN, WASTE AND SEWER PIPING WITHIN PROJECT SPACE WITH CONNECTION TO SANITARY WASTE SYSTEM ON SITE. PROVIDE A COMPLETE SYSTEM OF WASTE PIPING, CONSISTING OF SCH 40 PVC PIPE, CONNECTORS AND FITTINGS. ALL PIPING SHALL BE SLOPED UNIFORMLY AT 2% UNLESS OTHERWISE REQUIRED BY EXISTING CONDITIONS.
- 8.1. CLEANOUTS SHALL BE INSTALLED IN ALL HORIZONTAL DRAINAGE PIPE AND SHALL BE LOCATED NOT MORE THAN 100 FT APART.
- 8.2. CLEANOUTS SHALL BE INSTALLED AT ALL CHANGES OF DIRECTION GREATER THAN 45 DEGREES. WHERE MORE THAN ONE CHANGE OF DIRECTION OCCURS IN A SINGLE PIPE RUN, ONLY ONE (1) CLEANOUT SHALL BE REQUIRED FOR EVERY 40 FEET OF DEVELOPED LENGTH
9. VENTS: PROVIDE A COMPLETE SYSTEM OF VENT PIPING, CONSISTING OF SCH 40 PVC PIPE, CONNECTORS AND FITTINGS. COMBINE THE VENT RISERS IN THE CEILING SPACE. CONNECT TO EXISTING VENT MAIN.
10. WATER PIPING: CONNECT TO EXISTING WATER PIPING AND PROVIDE A NEW DOMESTIC HOT AND COLD WATER PIPING SYSTEM INSIDE THE BUILDING AS SHOWN ON DRAWINGS. LAY OUT WATER PIPING SO THAT ENTIRE SYSTEM CAN BE DRAINED. DOMESTIC (HOT & COLD) WATER PIPING ABOVE GRADE SHALL BE TYPE "L" COPPER TUBING. FITTINGS SHALL BE WROUGHT COPPER WITH LEAD FREE SOLDER. PIPING SHALL NOT TOUCH FERROUS MATERIALS. FIRMLY SUPPORT PIPING USING NON FERROUS PIPE SUPPORTS. PROVIDE WATER HAMMER ARRESTERS AT RESTROOM AREA & CHINESE WOK AREA PER DRAWING. SHOW FLUSH WATER PIPING CLEAR OF DEBRIS AND CLEAN AERATORS AND STRAINERS AT TERMINATION OF INSTALLATION.
11. NATURAL GAS PIPING INSIDE AND OUTSIDE THE BUILDING ABOVE GRADE SHALL BE SCHEDULE 40 BLACK STEEL ASTM A-33 PIPE WITH 125 LB MALLEABLE IRON SCREWED FITTINGS WHERE EXPOSED. PRIMER AND PAINT EXTERIOR GAS PIPING TO PREVENT RUST. PROVIDE ALL UNIONS, SHUT OFF VALVES AND DRIP LEGS REQUIRED BY NFPA-54 AND GOVERNING CODES. PROVIDE ALL TESTS, INSPECTIONS, HANGERS AND APPURTENANCES REQUIRED FOR A COMPLETE OPERATING SYSTEM. TAP ON UTILITY GAS MAIN AND GAS METER SHALL BE BY GAS COMPANY. EXTEND PIPING FROM METER TO EQUIPMENT AS DETAILED ON DRAWINGS. PROVIDE ROUTING, HANGING, AND PENETRATIONS PER OWNER'S REQUIREMENTS.
12. PIPE INSULATION: INSULATE ALL COLD WATER WITH ½", AND HOT WATER & CONDENSATE PIPING WITH 1", PLENUM-RATED ELASTOMERIC INSULATION (BY ARMSTRONG, RUBATEX OR EQUAL) MAY BE USED.
13. PIPE MARKING:
- 13.1. IDENTIFY ALL PIPING WITH ANSI/ASME A13.1 2007 APPROVED PIPE MARKER SYSTEM USING EZ ARROWS AND ARROW BANDING TAPE IN CONJUNCTION WITH EZ PIPE MARKERS. PRODUCTS AVAILABLE AT PIPEMARKER.COM, 822-274-8271. INSTALL PER MANUFACTURERS INSTRUCTIONS.
- 13.2. IDENTIFY ALL MANIFOLDS AND ALL VALVES ON THE MANIFOLDS FOR CORRESPONDING FIXTURES.
14. SHUT-OFF VALVES WITH UNIONS SHALL BE PROVIDED AT BRANCHES TO GROUPS OF MORE THAN TWO FIXTURES, AND AT THE WATER HEATER, TO FACILITATE ISOLATION FOR REPAIR OR REPLACEMENT. USE CHROME-FINISHED FORGED BRONZE BODY BALL VALVE, WITH TEFLON SEATS AND PACKING, 400 LB WOG, FLUSH WATER PIPING CLEAR OF JENKINS #902-T. GAS VALVES SHALL BE ALL BRONZE LUBRICATED PLUG COCKS FOR SCREWED PIPE, BY WALWORTH, ROCKWELL, NORSTROM OR APPROVED EQUIVALENT.
15. ACCESS PANELS SHALL BE LOCATED IN CEILINGS OR WALLS WHERE CONCEALED CONTROL DEVICES ARE LOCATED, EXCEPT WHERE ACCESS FOR ADJUSTMENT AND MAINTENANCE IS POSSIBLE THROUGH LAY-IN CEILINGS. SUPPLIES AND TRAPS: PROVIDE WATER SEALED TRAPS AND SUPPLIES INSTALLED AS CLOSE AS POSSIBLE TO ALL PLUMBING FIXTURES, DRAINS, AND FOOD SERVICE EQUIPMENT OR BEVERAGE DISPENSING EQUIPMENT ITEMS FURNISHED BY OTHERS, HAVING A WASTE CONNECTION, OR REQUIRING WATER SERVICE. EXPOSED TRAPS AND SUPPLIES IN EXPOSED AREAS (INCLUDING CABINET INTERIORS) SHALL BE CHROME PLATED BRASS.
17. INSTALLATION: THOROUGHLY CLEAN ITEMS BEFORE INSTALLATION. CAP PIPE OPENINGS TO EXCLUDE DIRT UNTIL FIXTURES ARE INSTALLED AND FINAL CONNECTIONS HAVE BEEN MADE. PROCEED AS METER SHALL BE BY GAS COMPANY. SET FIXTURES LEVEL AND IN PROPER ALIGNMENT. INSTALL SUPPLIES IN PROPER ALIGNMENT WITH FIXTURES, PER MANUFACTURER'S ROUGH-IN DIMENSIONS. INSTALL SILICONE SEALANT BETWEEN FIXTURES AND ADJACENT MATERIAL, FOR SANITARY JOINT. REPAIR ANY DAMAGE DONE TO EXISTING FEATURES AND RESTORE TO ORIGINAL CONDITIONS. PROVIDE CLEAN CONDITIONS AT TERMINATION OF WORK.
18. TEST WATER, GAS, VENT, AND WASTE SYSTEMS PER LOCAL CODE REQUIREMENTS. WHEN TESTING INDICATES MATERIALS OR WORKMANSHIP ARE DEFICIENT, REPLACE OR REPAIR AS REQUIRED, AND REPEAT TEST TILL STANDARDS ARE ACHIEVED.
19. GUARANTEE THE WORK AND THE INSTALLATION FOR ONE YEAR AFTER FORMAL ACCEPTANCE BY THE OWNER.
20. ALL SAW CUT AND PATCH BACK OF FLOOR TO MATCH EXISTING FINISHES. BACKFILL PER DEVELOPER OR OWNER' SOILS ENGINEER'S RECOMMENDATIONS

PLUMBING KEY NOTES

1. NOT USED
2. ¾" G DOWN TO RICE COOKER W/ SOV. PROVIDE 6" LENGTH OF RIGID PIPE BETWEEN RICE COOKER AND FLEXIBLE GAS LINE.
3. CONNECT NEW 2-1/2" 7" WC GAS LINE TO NEAREST MIN. 3" 2" WC GAS ON ROOF. VERIFY SIZE AND LOCATION ON SITE.
4. 1½" G DOWN TO DEEP FRYER W/ SOV.
5. 2" G DOWN TO CHINESE RANGE "20A" W/ SOV. LOCATE STUB OUT BEHIND THE END OF RANGE FOR EASY ACCESS.
6. NOT USED.
7. ROUTE NEW PIPING IN WALL.
8. 2-1/2" GAS ANSUL VALVE PROVIDED BY OWNER (G.C. CALL OPTIMEARE FOR DELIVERY). INSTALL GAS ANSUL VALVE AS CLOSE TO EXTERIOR WALL AS ALLOWED PER LOCAL CODE.
9. NOT USED.
10. NOT USED
11. ¾" CW TO TRAP PRIMER. PROVIDE WALL ACCESS PANEL. RUN ¾" CW BELOW FLOOR TO FLOOR DRAIN, SEE DETAIL #17 ON PLAN P-500.
12. NEW MIN. 1-1/4" CW/ 1" HW LINES TO CONNECT TO MIN. 1-1/4" CW/ 1" HW LINES. VERIFY POINT OF CONNECTION ON SITE.
13. NOT USED.
14. SHUT OFF VALVE W/ HANDLE AT 11'-0" ABOVE FINISH FLOOR, EASILY ACCESSIBLE. G.C. TO INSTALL LOCATION INDICATOR STICKER PROVIDED BY PANDA EXPRESS
15. 1-1/4" G DOWN TO CHINESE RANGE "20Q" W/ SOV. LOCATE STUB OUT BEHIND THE END OF RANGE FOR EASY ACCESS.
16. ½" HW & CW TO FAUCET (408) FOR CHEMICAL FEED SYSTEM.
17. GAS HEADER - INSTALL TIGHT TO WALL AND TIGHT TO BOTTOM OF TRUSSES.

PLUMBING SYMBOLS

	NEW COLD WATER PIPING
	EXISTING COLD WATER PIPING
	NEW COLD FILTERED WATER PIPING
	EXISTING HOT WATER PIPING
	NEW HOT WATER PIPING
	HOT WATER CIRCULATION PIPING
	NEW GAS LINE
	PLUMBING VENT (V)
	NEW GREASE WASTE (GS)
	EXISTING GREASE WASTE (GS)
	BELOW SLAB/GRADE
	PIPE TURNING UP/DOWN
	GAS COCK
	F.S. WITH HALF GRATE
	FLOOR DRAIN
	FIXTURE IDENTIFICATION
	PLAN NOTE
	KITCHEN EQUIPMENT IDENTIFICATION
	VENT THRU ROOF
	ABOVE FINISHED FLOOR/GRADE
	CLEANOUT
	WALL CLEANOUT
	FLUSH FLOOR/GRADE CLEANOUT
	FIRE PROTECTION CONTRACTOR
	DEPARTMENT OF NATURAL RESOURCES
	TYPICAL
	EXISTING
	POINT OF CONNECTION
	BALL VALVE
	CHECK VALVE
	GREASE WASTE

NOTES:

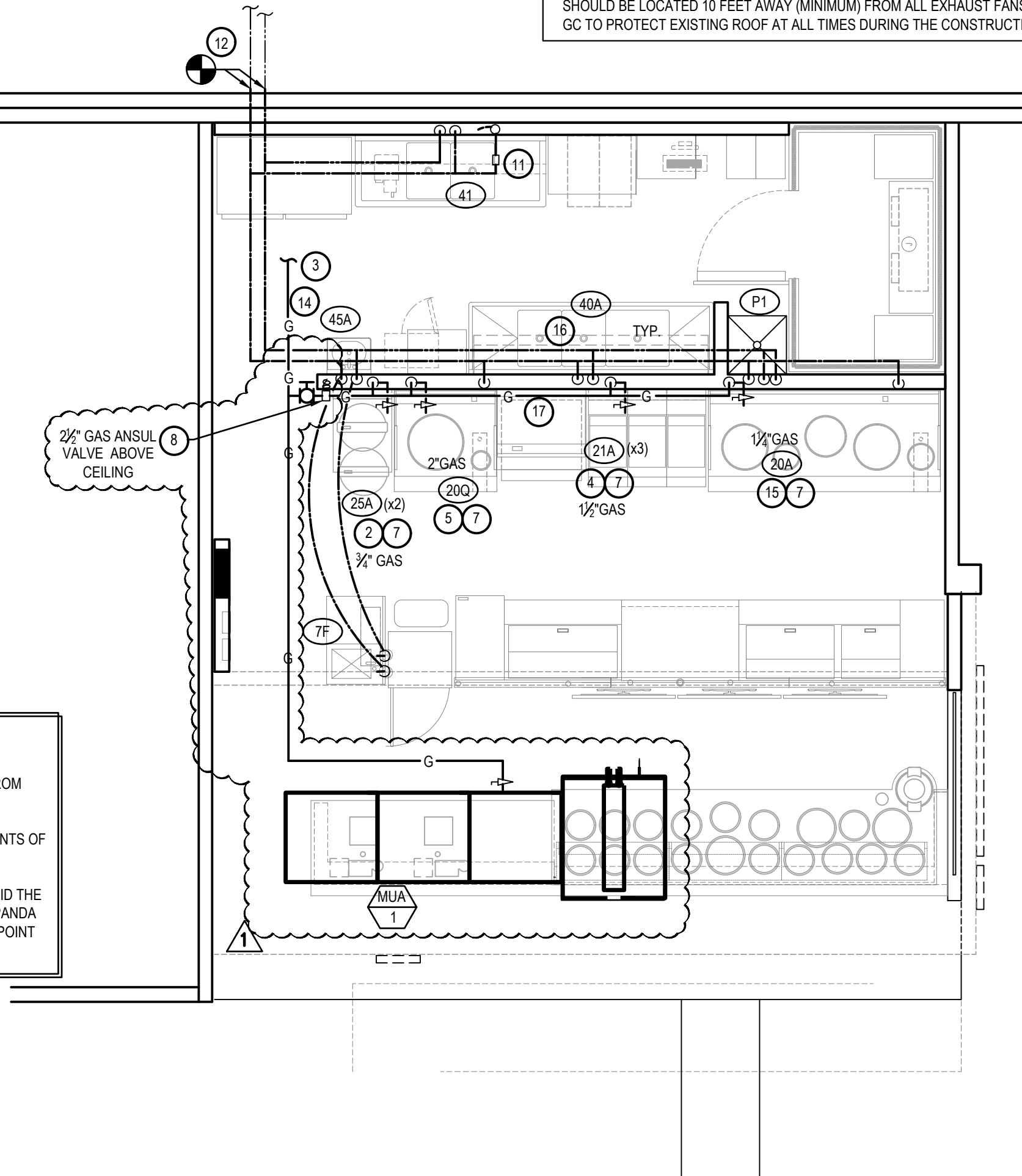
1. ALL WATER LINES SERVING WATER HEATERS SHALL RUN DOWN FROM CEILING SPACE IN WALL, OFFSET OVER THROUGH WALL 6" BELOW CEILING, ABOVE WATER HEATER, THEN DROP DOWN TO HEATER.
2. AVOID RUNNING WATER VALVES DIRECTLY ABOVE WATER HEATER. TO AVOID DAMAGE TO WATER HEATER CAUSED BY POSSIBLE LEAKS.
3. REFER TO PIPING RISER DIAGRAMS, SHEET P-400 FOR ALL PIPE SIZING NOT SHOWN ON FLOOR PLAN.
4. DO NOT RUN ANY PIPING HORIZONTAL IN WALL SPACE, U.N.O.
5. REFER TO RISER DIAGRAMS, SHEET P-400

PIPING NOTE:

- GC TO RUN NEW 2" GAS LINE TO SPACE FROM NEAREST POINT OF CONNECTION.
- GC TO VERIFY ALL GAS, HW, CW POINTS OF CONNECTION.
- GC TO INCLUDE ON THE CONSTRUCTION BID THE COST TO BRING A NEW GAS LINE TO THE PANDA EXPRESS LOCATION FORM THE NEAREST POINT OF CONNECTION.

NOTE:

ALL EQUIPMENT LOCATIONS SHOWN ON THE ROOF PLAN ARE SCHEMATIC IN NATURE. IT IS THE GC'S RESPONSIBILITY TO FIELD VERIFY EXISTING CONDITIONS BEFORE INSTALLING ALL NEW ROOF TOP UNITS. ALL EXHAUST FANS SHOULD BE LOCATED 10 FEET AWAY (MINIMUM) FROM ALL AIR INTAKES. MAKE-UP AIR UNIT/AIR INTAKE SHOULD BE LOCATED 10 FEET AWAY (MINIMUM) FROM ALL EXHAUST FANS AND VENTS. GC TO PROTECT EXISTING ROOF AT ALL TIMES DURING THE CONSTRUCTION.



WATER & GAS PLAN

1

Scale:1/4"=1'-0"

P-100



PANDA RESTAURANT GROUP INC.

1683 Walnut Grove Ave.  
Rosemead, California  
91770

Telephone: 626.799.9898  
Facsimile: 626.372.8288

All ideas, designs, arrangement and plans indicated, or represented by this drawing are the property of Panda Express Inc. and were created for use on this specific project. None of these ideas, designs, arrangements or plans may be used by or disclosed to any person, firm, or corporation without the written permission of Panda Express Inc.

REVISIONS:

NO.	PLAN REVIEW COMMENTS	DATE
-----	----------------------	------

ISSUE DATE:

NO.	REVISION	DATE
1	95% SUBMITTAL	01/11/2020
2	100% SUBMITTAL	04/16/2021
3	100% RESUBMITTAL	05/14/2021
4	FINAL SUBMITTAL	06/08/2021

DRAWN BY: MRM

PANDA PROJECT #: D7395

ARCH PROJECT #:



**MARSHALL & BOLLWERK  
ENGINEERING, INC.**  
8881 Highway 92, Suite 400  
Woodstock, Ga. 30189  
p: (678) 795-0333, f: (678) 325-4559  
e: mbe@mbinc.net



PANDA EXPRESS

ROBINS AFB SHOPPING CENTER  
ROBINS AFB, GA

P-100

WATER & GAS PLAN

BID SET - 2021/06/28

PLUMBING FIXTURE SCHEDULE				
<div>D</div>	FLOOR DRAIN: ZURN # ZB415-B5 CAST IRON DRAIN WITH 5" ROUND POLISHED BRONZE TOP, MEMBRANE FLASHING CLAMP. PROVIDE 3" OUTLET WITH P-TRAP. CLEAN AND POLISH AFTER INSTALLATION. REFER TO DETAIL 9/P-500 & 17/P-500. PROVIDE TRAP PRIMER			
<div>E</div>	FLOOR SINK: ZURN # Z1901-32, RECEPTOR WITH 12" SQUARE TOP x 8" DEEP CAST IRON BODY WITH ACID-RESISTING ENAMEL INTERIOR. RECEPTOR PROVIDED WITH ALUMINUM DOME STRAINER WITHOUT GRATE.			
<div>G</div>	FLOOR DRAIN WITH FUNNEL: ZURN # ZB415-AR-4 ACID RESISTING EPOXY COATED CAST IRON DRAIN WITH 5" ROUND POLISHED BRONZE TOP, 4" FUNNEL. PROVIDE 3" OUTLET WITH P-TRAP. CLEAN AND POLISH AFTER INSTALLATION. REFER TO DETAIL. PROVIDE TRAP PRIMER			
<div>M</div>	TRENCH DRAIN: ZURN #Z-886-RFS, 6" WIDE x 80" LONG, TRENCH DRAIN SYSTEM. MODULAR CHANNEL SECTIONS SHALL BE MADE OF HIGH DENSITY POLYETHYLENE WITH INTERLOCK ENDS, A RADIUS BOTTOM AND REINFORCED STAINLESS STEEL SLOTTED GRATE.			
<div>P1</div>	MOP SINK: GSW # SE2424FM 24"x24" STAINLESS STEEL UNIT WITH 13" HIGH SIDES, 18 GA. STAINLESS STEEL CHICAGO FAUCET #897 WITH INTEGRAL STOPS IN SHANKS, WALL BRACE, HOSE THREADS, PAL HOOK, VACUUM BREAKER, ROUGH BRASS FINISH; THREE FOOT RUBBER HOSE, 3" TRAPPED AND VENTED WASTE CONNECTION. PROVIDE 3/4" HW & CW RI 8" OC, 36" A.F.F. PROVIDE 1/2" CW HOSE BIBB, ACORN #8121 W/ VACUUM BREAKER, 48" A.F.F. FOR CHEMICAL CONNECTION.			
FIXTURE BRANCH SCHEDULE				
FIXTURE	COLD WATER	HOT WATER	WASTE	VENT
2 AND 3 - COMP SINK	1/2"	1/2"	3"	2"
HAND SINK	1/2"	1/2"	2"	1 1/2"
MOP SINK (J.S.)	1/2"	1/2"	3"	2"
EQUIPMENT	1/2"	--	--	--
FLOOR DRAIN/SINK	--	--	2" OR 3"	2"

PIPE MATERIAL SCHEDULE		
SERVICE	UNDERGROUND	ABOVE GROUND
COLD & HOT WATER	TYPE "K" OR "L" HARD DRAWN COPPER TUBE	TYPE "K" OR "L" HARD DRAWN COPPER TUBE
SANITARY WASTE	*SCH. 40 PVC	*SCH. 40 PVC
SANITARY VENT	*SCH. 40 PVC	*SCH. 40 PVC
GAS	---	BLACK STEEL, SCHEDULE 40
INDIRECT DRAIN	---	HARD DRAWN COPPER TUBE TYPE "M"
*SCH. 40 PVC IS PREFERRED IF APPROVED BY AUTHORITY HAVING JURISDICTION. PROVIDE SCHEDULE 40 PVC FOR ALL WASTE VENT PIPING & FITTINGS.		

KITCHEN EQUIPMENT SCHEDULE	
ITEMS IN THIS SCHEDULE ARE FURNISHED BY THE OWNER AND INSTALLED BY THE GENERAL CONTRACTOR AND CONNECTED TO THE PLUMBING UTILITIES BY THE PLUMBING CONTRACTOR, WHO SHALL INSTALL ALL PLUMBING DEVICES FURNISHED WITH EQUIPMENT.	
WASTE, FS = FLOOR SINK, CFD = CONDENSATE FLOOR DRAIN, VB = VACUUM BREAKER, FLEX = A SIX FOOT COILED LENGTH OF FOOD QUALITY FLEXIBLE REINFORCED PLASTIC TUBING CONNECTED FROM THE ROUGH IN TO THE EQUIPMENT WITH ALL REQUIRED ADAPTERS AND HOSE CLAMPS.	
ALL PIPES MUST MAINTAIN A MINIMUM CLEARANCE OF 6" AFF AND MUST BE WELL SUPPORTED. NO FLOOR SUPPORTS ALLOWED.	
<div>7F</div>	HAND SINK. PROVIDE 1" CW AND 1" HW AT 24" AFF AND 8" OC WITH CHROME-PLATED, 1/4 TURN BALL VALVES. CONNECT TO OWNER SUPPLIED FAUCETS WITH METAL FLEX PIPING. PROVIDE 2" DRAIN PIPE WITH P TRAP AND WALL MOUNTED CLEAN-OUT. ALL EXPOSED DRAIN PIPES AND FITTINGS TO BE CHROME PLATED, NOT P.V.C.
<div>20A</div>	CHINESE RANGE: PROVIDE 1/2" CW AT 10" AFF WITH BV. PROVIDE PRESSURE TYPE VB OR OTHER BACKFLOW DEVICE AS REQUIRED BY LOCAL CODE, AND CONNECT TO OWNER SUPPLIED FAUCETS. PROVIDE 2" COPPER PIPE IW TO FS WITH 2" AIR GAP. PROVIDE 1/2" GAS SUPPLY AT 9" AFF WITH EASILY ACCESSIBLE SHUT-OFF VALVE. INSTALL OWNER SUPPLIED GAS REGULATOR AND ADJUST GAS LEVEL TO BURNERS.
<div>20Q</div>	CHINESE RANGE: PROVIDE 1/2" CW AT 10" AFF WITH BV. PROVIDE PRESSURE TYPE VB OR OTHER BACKFLOW DEVICE AS REQUIRED BY LOCAL CODE, AND CONNECT TO OWNER SUPPLIED FAUCETS. PROVIDE 2" COPPER PIPE IW TO FS WITH 2" AIR GAP. PROVIDE 1" GAS SUPPLY DOWN TO 9" AFF REDUCE TO 1/2" AT EQUIPMENT CONNECTION WITH EASILY ACCESSIBLE SHUT-OFF VALVE. INSTALL OWNER SUPPLIED GAS REGULATOR AND ADJUST GAS LEVEL TO BURNERS.
<div>21A</div>	FRYER: PROVIDE 1/2" GAS SUPPLY DOWN TO 14" AFF. THEN TRANSITION TO 1" WITH 90° ANGLE AND SHUT OFF VALVE. PROVIDE ALL REQUIRED FITTINGS AND INSTALL OWNER SUPPLIED QUICK DISCONNECT FLEXIBLE PIPE AND CONNECT TO UNITS WITH 90° ANGLE. SEE DETAIL ON P-500
<div>25A</div>	RICE COOKER: PROVIDE 1/2" GAS SUPPLY AT 30", AND 1/2" GAS SUPPLY AT 10" AFF WITH SHUT OFF VALVES, ONE FOR EACH UNIT. PROVIDE ALL REQUIRED FITTINGS AND INSTALL OWNER SUPPLIED QUICK DISCONNECT FLEXIBLE PIPE AND CONNECT TO UNITS.
<div>31M</div>	WALK-IN COOLER: PROVIDE 1" COPPER PIPE IW FROM DRAIN PAN ON EACH UNIT TO FLOOR DRAIN WITH P TRAP AND 1" AIR GAP. MOUNT ALL PIPES WITHIN WALK-IN BOX WITH 1" HOLD-OFF SUPPORTS.
<div>40A</div>	POT SINK: PROVIDE 1/2" CW AND 1/2" HW AT 14" AFF AND 8" OC WITH BVS & CV. CONNECT TO OWNER SUPPLIED FAUCET WITH COPPER PIPING. PROVIDE 2" COPPER PIPE IW (MANIFOLD ALL COMPARTMENT DRAINS INTO ONE LINE) TO FS WITH 2" AIR GAP. OR, IF REQUIRED BY LOCAL CODE, INSTALL 2" COPPER PIPE DIRECTLY TO SEWER SYSTEM. INSTALL OWNER SUPPLIED LEVER DRAIN STOPS. SEE DETAIL ON SHEET P-500. FAUCET FOR CHEM. T&S BRASS MODEL #B-0669-POL.
<div>41</div>	DOUBLE BOWL PREP SINK: PROVIDE 1/2" CW AND 1/2" HW AT 14" AFF. AND 8" OC WITH BVS. TRANSITION TO 1/2" PRIOR TO CONNECTION. CONNECT TO OWNER SUPPLIED FAUCETS WITH COPPER PIPING. PROVIDE 2" COPPER PIPE IW TO FS WITH 2" AIR GAP. OR, IF REQUIRED BY LOCAL CODE, INSTALL 2" COPPER PIPE DIRECTLY TO SEWER SYSTEM. INSTALL OWNER SUPPLIED LEVER DRAIN STOPS.
<div>45A</div>	HAND SINK. PROVIDE 1/2" CW AND 1/2" HW AT 24" AFF AND 8" OC WITH CHROME-PLATED, 1/4 TURN BALL VALVES. CONNECT TO OWNER SUPPLIED FAUCETS WITH METAL FLEX PIPING. PROVIDE 2" DRAIN PIPE WITH P TRAP AND WALL MOUNTED CLEAN-OUT. ALL EXPOSED DRAIN PIPES AND FITTINGS TO BE CHROME PLATED, NOT P.V.C.

PLUMBING KEY NOTES
1. NOT USED
2. CONDENSATE: ROUTE SHARED CONDENSATE LINE THROUGH WALK-IN COOLER. DO NOT RUN THROUGH WALK-IN FREEZER. PROVIDE 1" INSULATED CONDENSATE DRAIN PIPE FROM THE EVAPORATIVE COIL DISCHARGE TO FLOOR SINK OR MOP SINK WITH AIR GAP OF TWICE PIPE DIAMETER. INSTALL AT MINIMUM 76" HEIGHT A.F.F. REFER TO DETAIL #2 ON SHEET P-500.
3. NOT USED.
4. PROVIDE TRAP PRIMER FOR FLOOR DRAIN. SEE DETAILS #9 & #17 ON DWG P-500.
5. RELIEF VALVE: PROVIDE 3/4" PIPE FULLY INSULATED. CONTINUE AND STOP AT 6" ABOVE GROUND AT MOP SINK.
6. CONNECT NEW GREASE WASTE (GS) PIPING TO EXISTING GREASE WASTE PIPING. VERIFY LOCATION OF EXISTING GREASE WASTE PIPING ON SITE.
7. COMBINATION WASTE/VENT

FIXTURE UNIT SCHEDULE						
ITEM	FIXTURE	QTY	WATER FU		SEWER FU	
			EACH	TOTAL	EACH	TOTAL
D	FLOOR DRAIN 3" TRAP	1	—	—	5	5
E	FLOOR SINK 3" TRAP	4	—	—	5	20
P1	MOP SINK	1	3	3	3	3
G	FLOOR DRAIN W/ FUNNEL 2" TRAP	0	—	—	3	0
M	TRENCH DRAIN 3" TRAP	1	—	—	5	5
7F	HAND SINK (COUNTER MOUNT)	1	2	2	1	2
20A	CHINESE RANGE	1	2	2	FS	—
20Q						
40A	POT SINK (3.COMP.)	1	4	4	FS	—
41	PREP. SINK (2.COMP.)	2	4	4	FS	—
45A	HAND SINK (WALL MOUNT)	1	2	2	1	2
TOTAL			15		36	
FIXTURE UNIT SUMMARY						
SERVICE					TOTAL F.U.	
DOMESTIC WATER					15	
SANITARY SEWER					36	

SERVICE

DOMESTIC WATER

SANITARY SEWER

FUEL GAS

FIRE PROTECTION

SIZE MAIN

1-1/4 INCH

4 INCH

2-1/2 INCH

INCH

CAPACITY

17.5 GPM

36 F.U.

1,353 CFH

GPM

WATER PIPE SIZING CHART

(COLD WATER)

PIPE SIZE	GPM	VELOCITY FT/SEC	FIXTURE UNITS		
			F - TANK		F - VALVE
1/2"	2.5	3.5	2 F.U. @ psi	6.0	F.U. @ psi
3/4"	6.6	4.4	8 F.U. @ psi		F.U. @ psi
1"	13.4	5.2	19 F.U. @ psi		F.U. @ psi
1-1/4"	23.3	5.9	37 F.U. @ psi		6 F.U. @ psi
1-1/2"	36.7	6.6	74 F.U. @ psi		23 F.U. @ psi
2"	76.4	7.9	254 F.U. @ psi		132 F.U. @ psi

\* DOMESTIC WATER BACKFLOW PREVENTER MODEL: "WILKINS"975XL SIZE 1-1/2"

\*\* PRESSURE REGULATING VALVE MODEL: N/A SIZE N/A

WATER PIPE SIZING CHART

(HOT WATER)

PIPE SIZE	GPM	VELOCITY FT/SEC	FIXTURE UNITS		
			F - TANK		F - VALVE
1/2"	2.5	3.5	2 F.U. @ psi		F.U. @ psi
3/4"	6.6	4.4	8 F.U. @ psi		F.U. @ psi
1"	13.2	5.0	19 F.U. @ psi		F.U. @ psi
1-1/4"	19.0	5.0	37 F.U. @ psi		6 F.U. @ psi

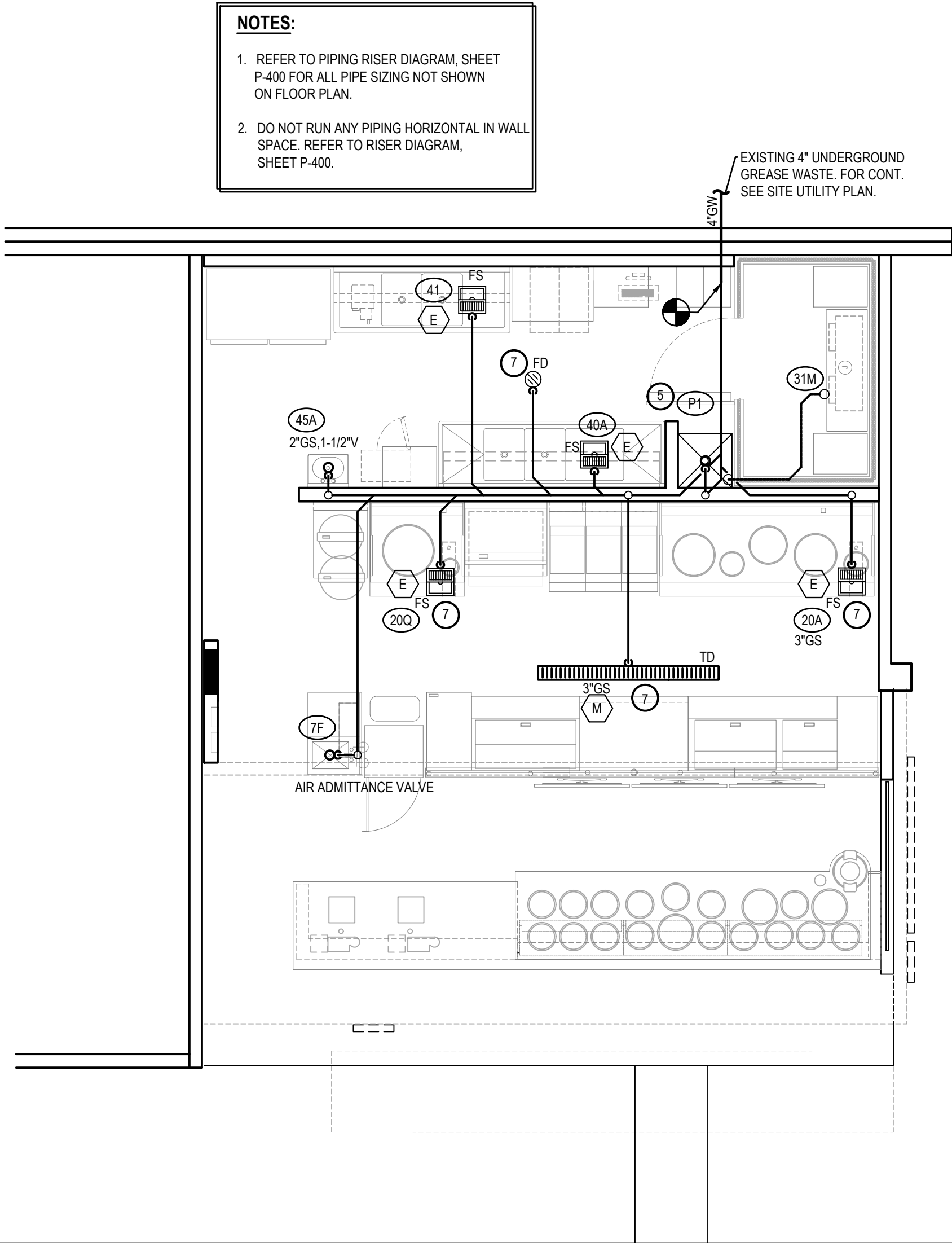
GREASE INTERCEPTOR CALCULATION

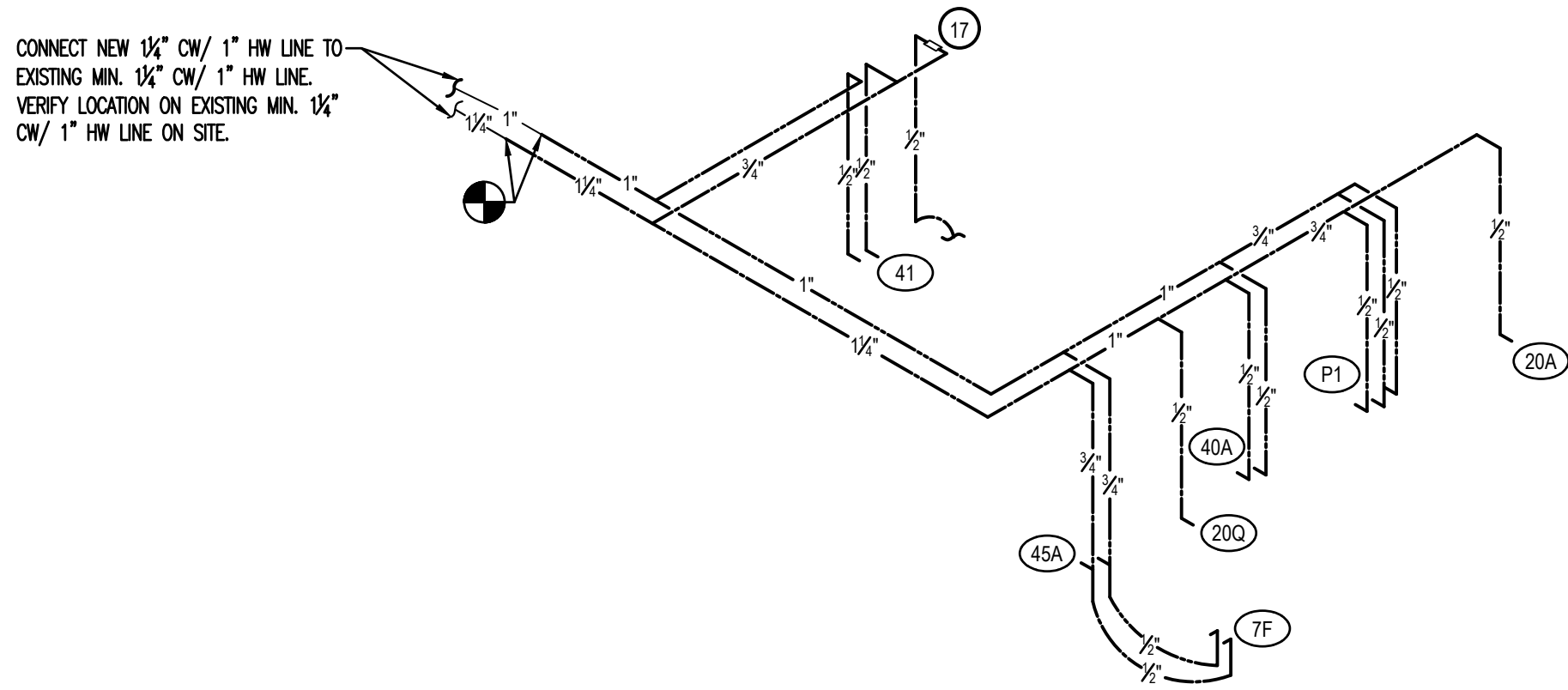
FIXTURE	QTY.	FU	FU TOTAL
FLOOR DRAIN/FLOOR SINK 3" TRAP	5	5	25
TRENCH DRAIN 3" TRAP	1	5	5
MOP SINK	1	3	3
TOTAL			33 (17 GPM)
APPROX FLOW RATE (2 DFUS = 1 GPM) PER 2012 IPC 709.3			17 GPM

NOTES:

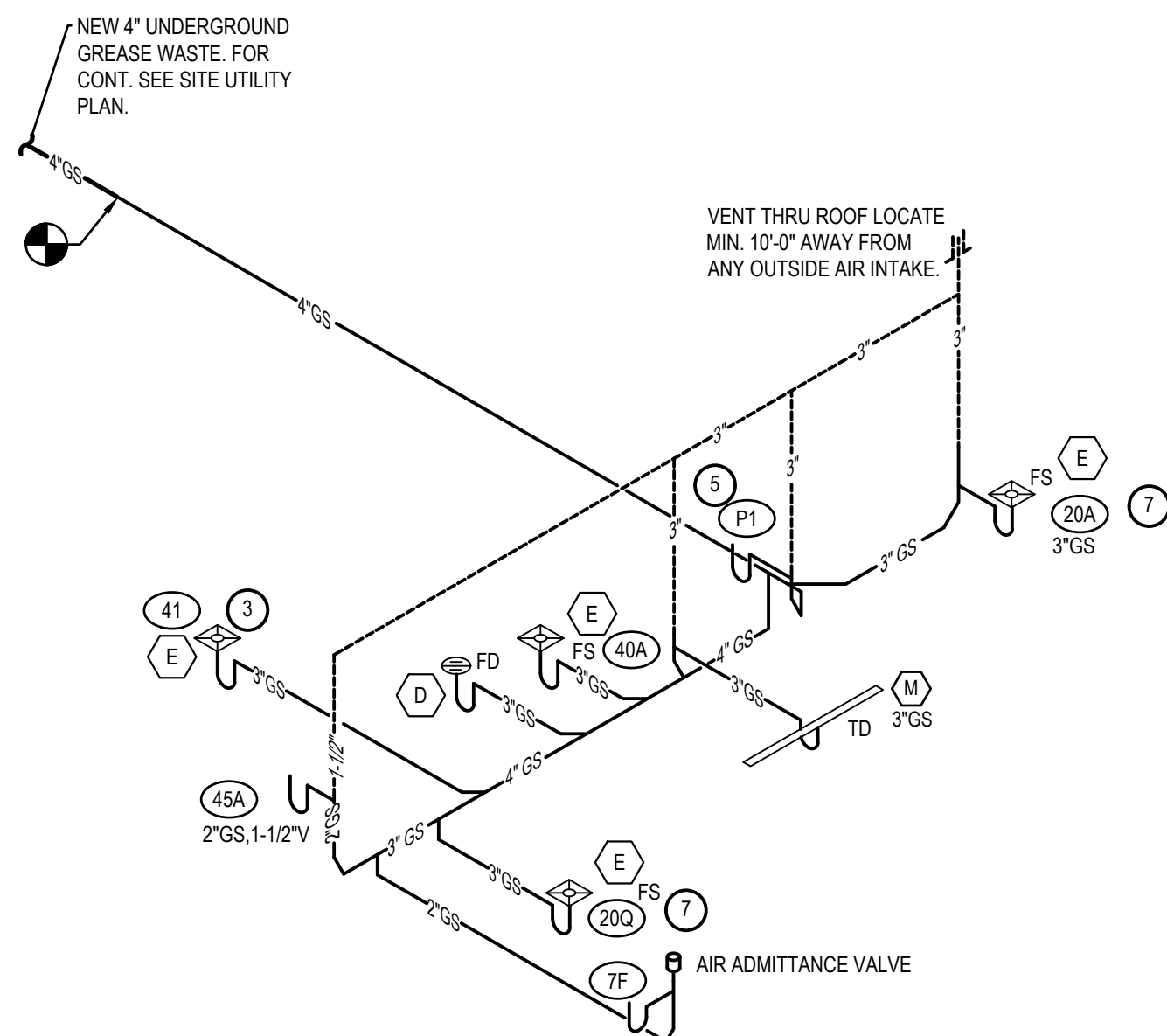
1. CALCULATIONS WERE PERFORMED PER 2018 INTERNATIONAL PLUMBING CODE.

2. CALCULATIONS FOR REFERENCE AND RECORDS ONLY.

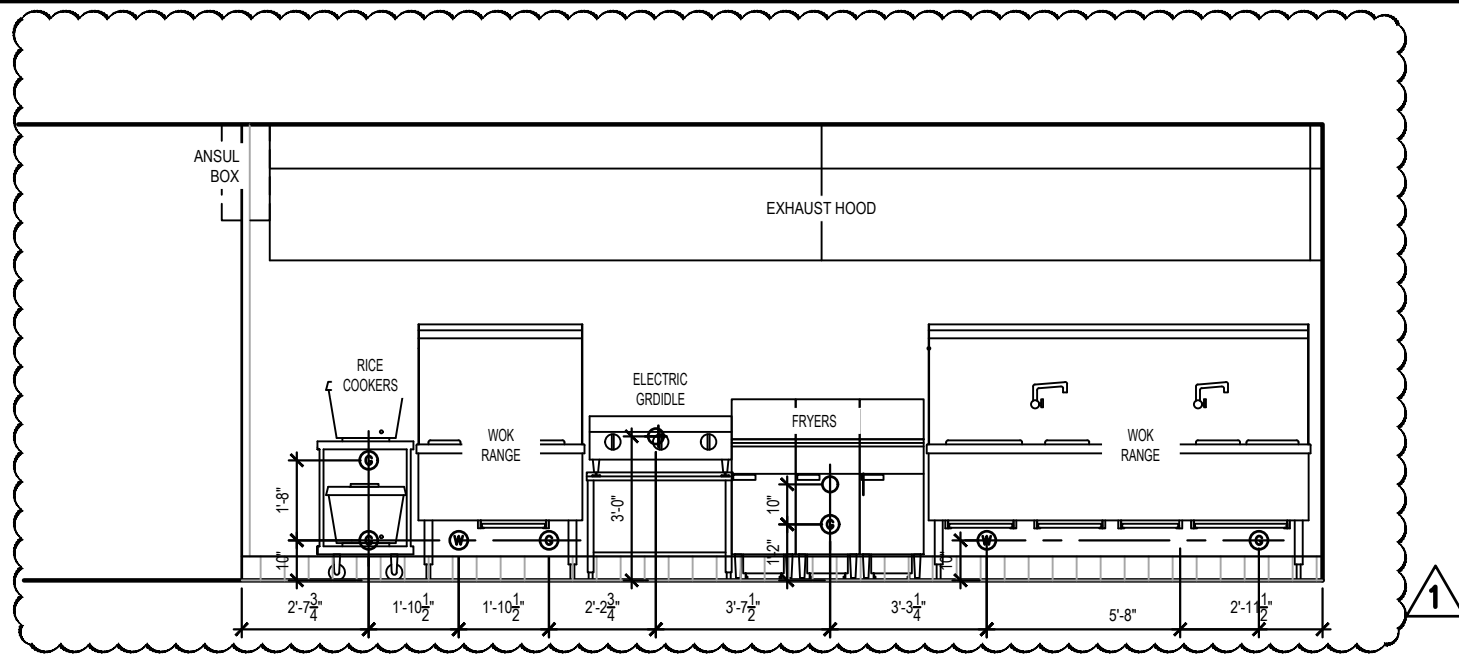




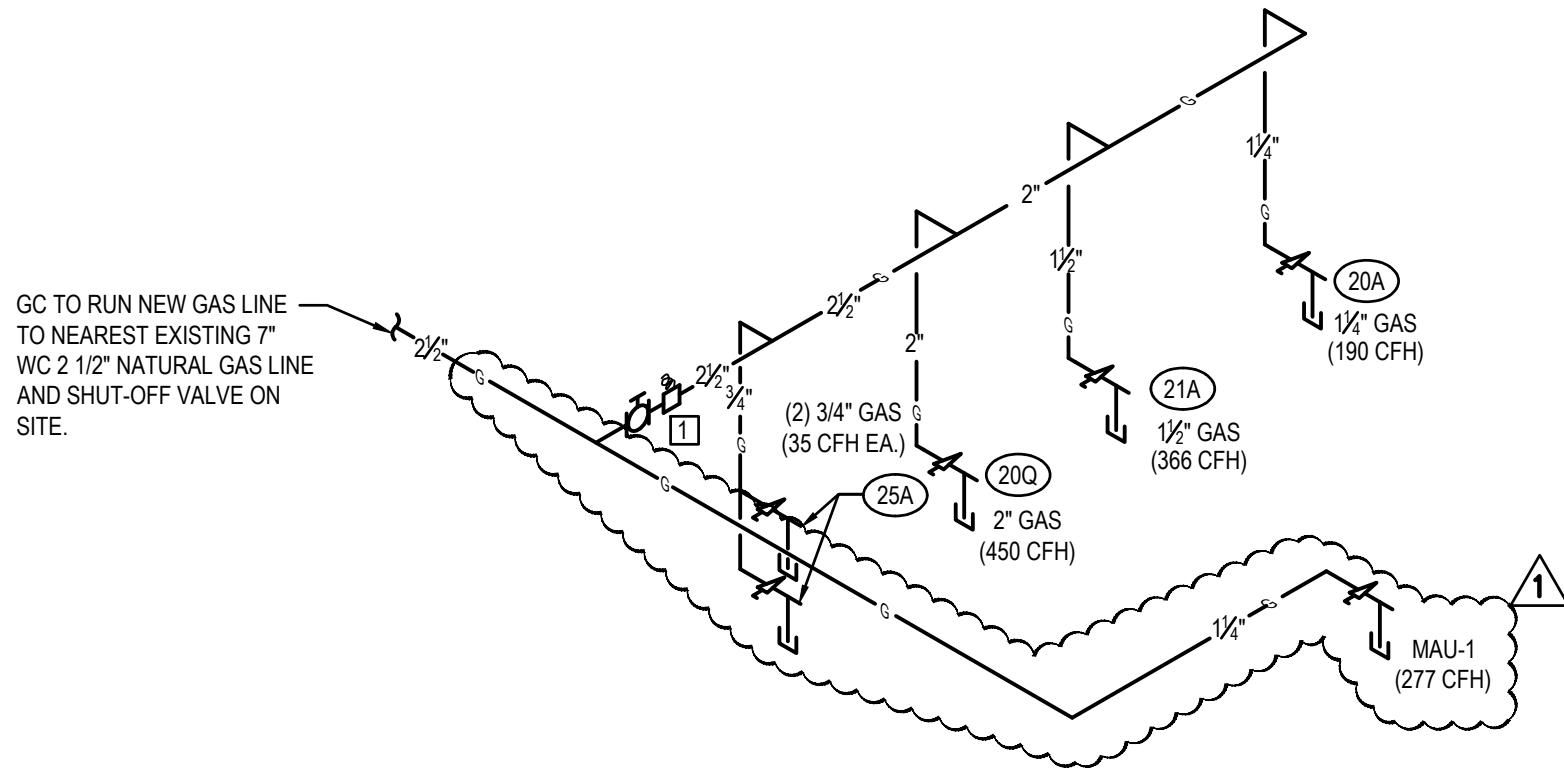
WATER RISER DIAGRAM 11  
NO SCALE P-400



WASTE AND VENT RISER DIAGRAM 9  
NO SCALE P-400



GAS COOKLINE ELEVATION 4  
NO SCALE P-400



GAS RISER CODED NOTE:  
[1] COORDINATE PRV WITH LEAVING PRESSURE FROM GAS METER

GAS RISER DIAGRAM 3  
NO SCALE P-400

GAS EQUIPMENT SCHEDULE

ITEM	QTY	EQUIPMENT	CFH		
			EACH	EACH	TOTAL
20A	1	CHINESE RANGE	190	190	190
20Q	1	CHINESE RANGE	450	450	450
21G	3	DEEP FRYER	122	122	366
25A	2	RICE COOKER	35	35	70
MAU-1	1	MAKE-UP AIR UNIT	277	277	277
TOTAL					1,353

LOW PRESSURE NATURAL GAS CALCULATION  
SIZED PER 2018 IFGC TABLE 402.4(2)  
TOTAL DEVELOPED LENGTH: 200'  
TOTAL LOAD: 1,353CFH

NOTE:  
DO NOT RUN ANY PIPING HORIZONTAL IN WALL SPACE



PANDA RESTAURANT GROUP INC.  
1683 Walnut Grove Ave.  
Rosemead, California 91770  
Telephone: 626.799.9898  
Facsimile: 626.372.8288

REVISIONS:		
1	PLAN REVIEW COMMENTS	03/26/2021

ISSUE DATE:		
1	95% SUBMITTAL	01/11/2020
2	100% SUBMITTAL	04/16/2021
3	100% RESUBMITTAL	05/14/2021
4	FINAL SUBMITTAL	06/08/2021

DRAWN BY: MRM

PANDA PROJECT #: D7395  
ARCH PROJECT #:



MARSHALL & BOLLWERK  
ENGINEERING, INC.  
8881 Highway 88, Suite 400  
Woodstock, Ga. 30189  
p: (678) 795-0333, f: (678) 325-4559  
e: mbe@mbeng.net



PANDA EXPRESS

ROBINS AFB SHOPPING CENTER  
ROBINS AFB, GA

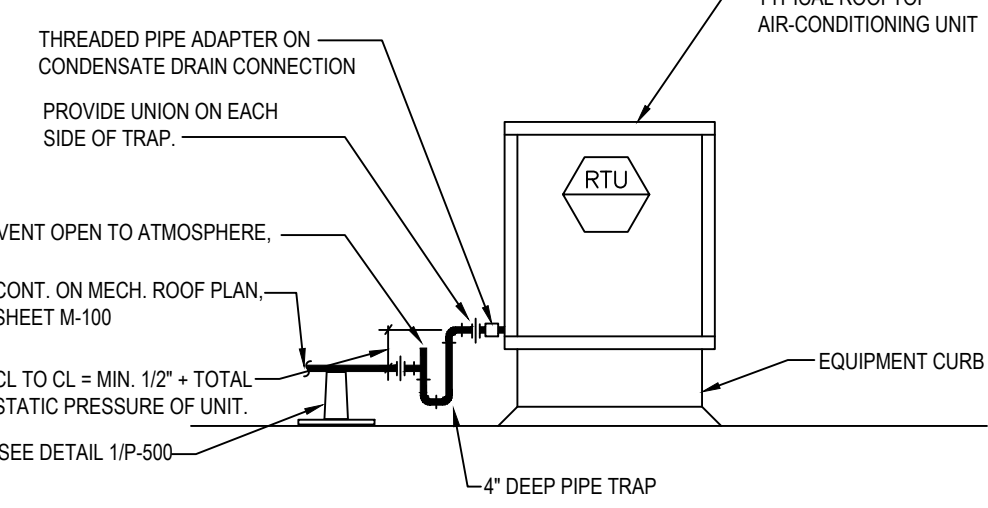
P-400

WATER, GAS WASTE &  
VENT RISER DIAGRAMS

BID SET - 2021/06/28

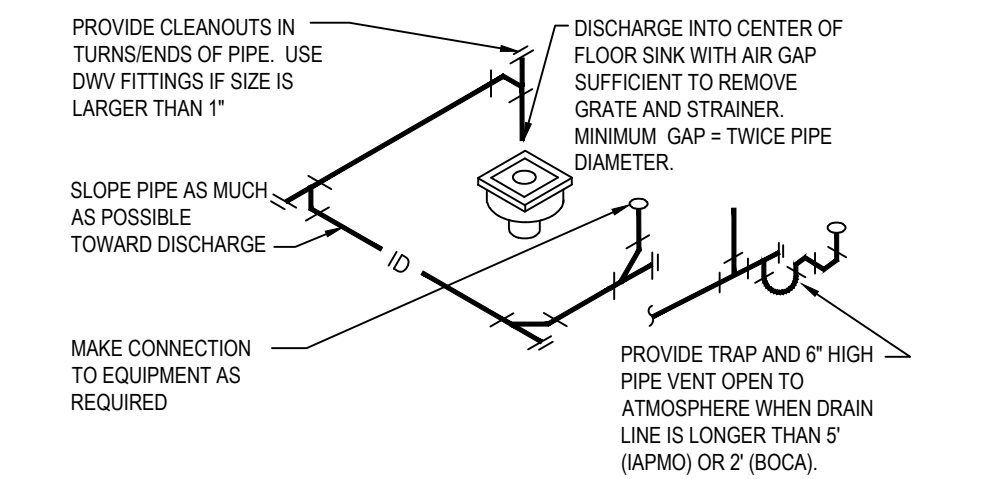


NOTE: IF ROOF DRAIN DOES NOT DRAIN TO PARKING/DRIVE SURFACE, THEN CONDENSATE TO DRAIN TO ROOF DRAIN. IF ROOF DRAINS TO PARKING/DRIVE SURFACE, THEN CONDENSATE TO DRAIN TO FLOOR SINK INSIDE STORE.  
MIN. TRAP DEPTH 4"; CENTERLINE OUTLET TO CENTERLINE DRAIN 1/2" PLUS UNIT TOTAL STATIC PRESSURE AS A MINIMUM. DISTANCE FROM OUTLET TO TRAP NOT LESS THAN 2 PIPE DIAMETERS.



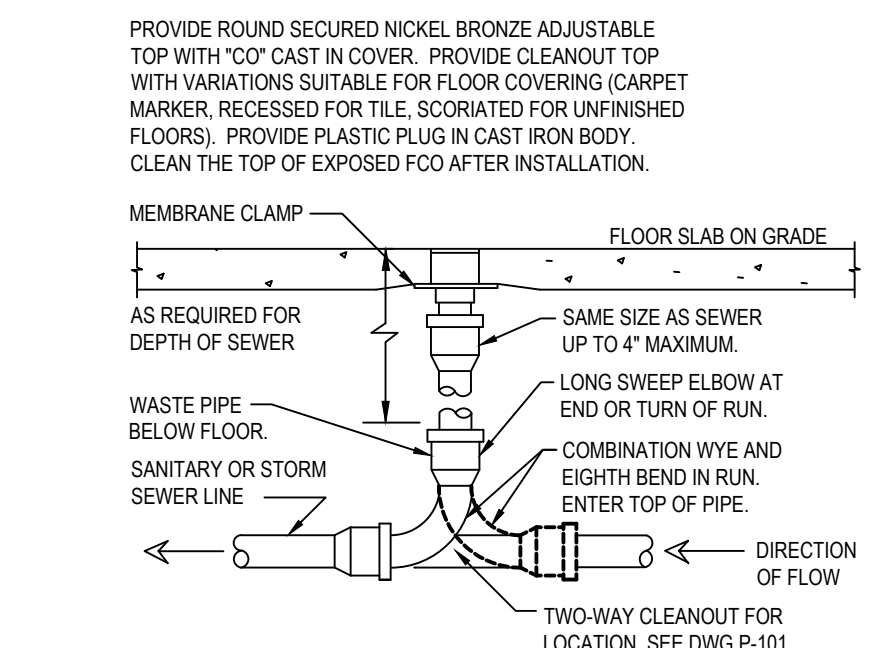
- NOTE:
1. PIPING ARRANGEMENT SHOWN IS SCHEMATIC. ADJUST AS REQUIRED. VERIFY CONNECTION LOCATIONS BEFORE INSTALLING PIPE RUNS. DO NOT PROVIDE TRAP ON UNITS WHICH HAVE AN INTERNAL TRAP.
  2. DRAIN LINES TO BE TYPE L COPPER.
  3. FOR FLOW-THROUGH TYPE EQUIPMENT, ADJUST P-TRAP DEPTH TO 1/2" PLUS TOTAL STATIC PRESSURE OF UNIT.

NOT USED	16
Scale: NO SCALE	P-500



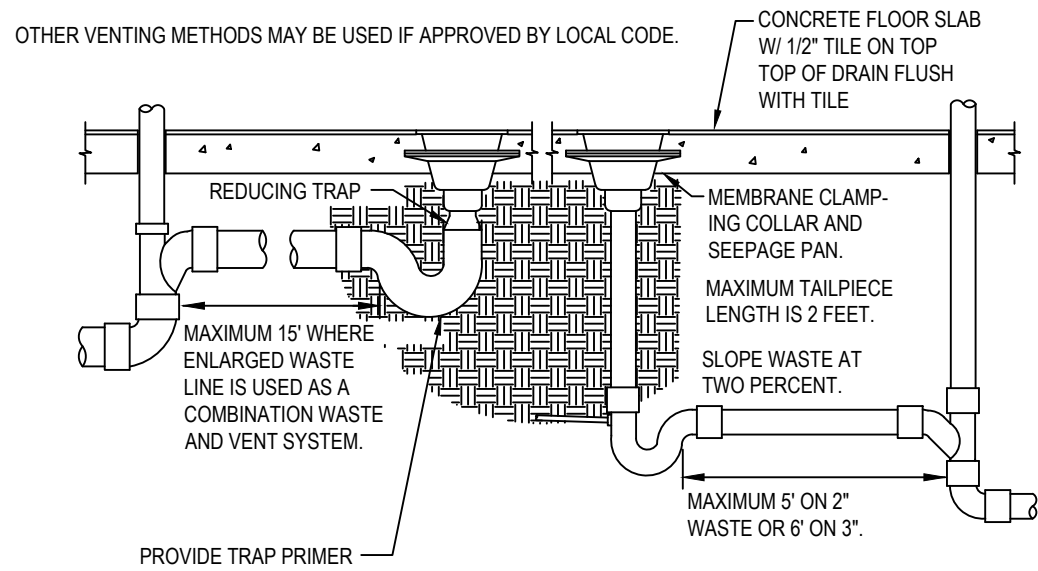
- NOTE:
1. ROUTE PIPE INCONSPICUOUSLY AND UNOBTUSIVELY.
  2. HANG PIPE AS REQUIRED.
  3. DO NOT INSULATE INDIRECT DRAIN PIPE WHEN INSTALLED IN FOOD SERVICE FACILITY. REFER TO LOCAL CODES FOR FURTHER INFORMATION.

INDIRECT DRAIN	15
Scale: NO SCALE	P-500



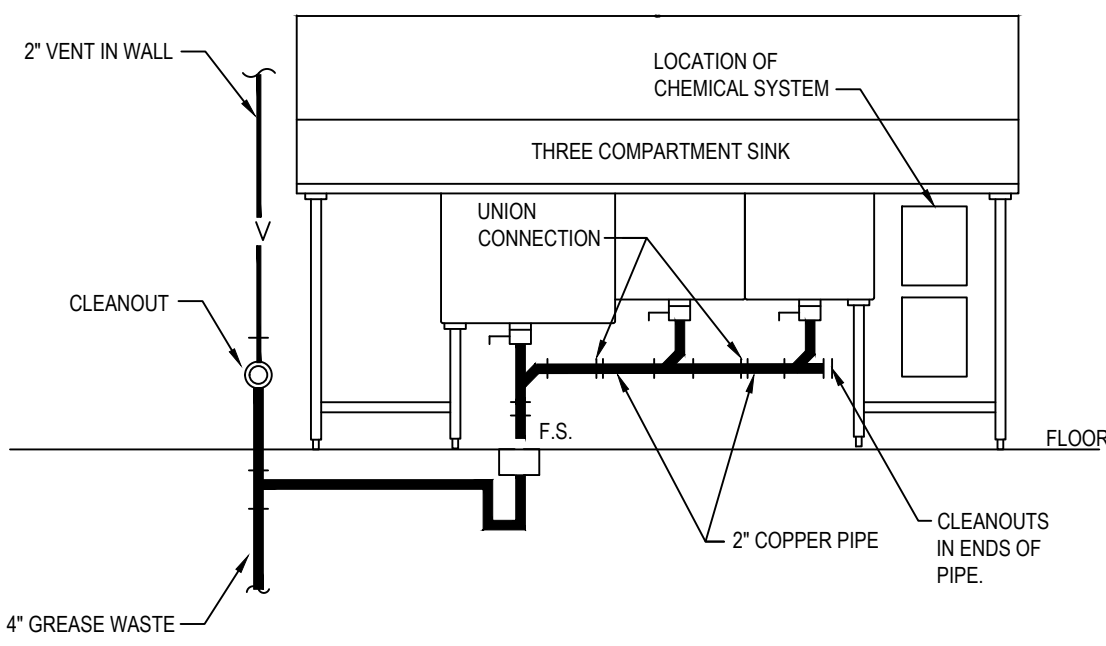
- NOTE:
1. LOCATE AT BUILDING EXIT, AT ENDS OF RUNS, AT TURNS OF PIPE GREATER THAN 45 DEGREES, AT 50' INTERVALS ON STRAIGHT RUNS, AND WHERE SHOWN ON PLANS.
  2. PROVIDE BACKFILL PER ARCHITECTURAL SPECIFICATIONS.
  3. LOCATE CLEANOUTS WHERE THERE IS 18\"/>

FLOOR CLEANOUT	11
Scale: NO SCALE	P-500



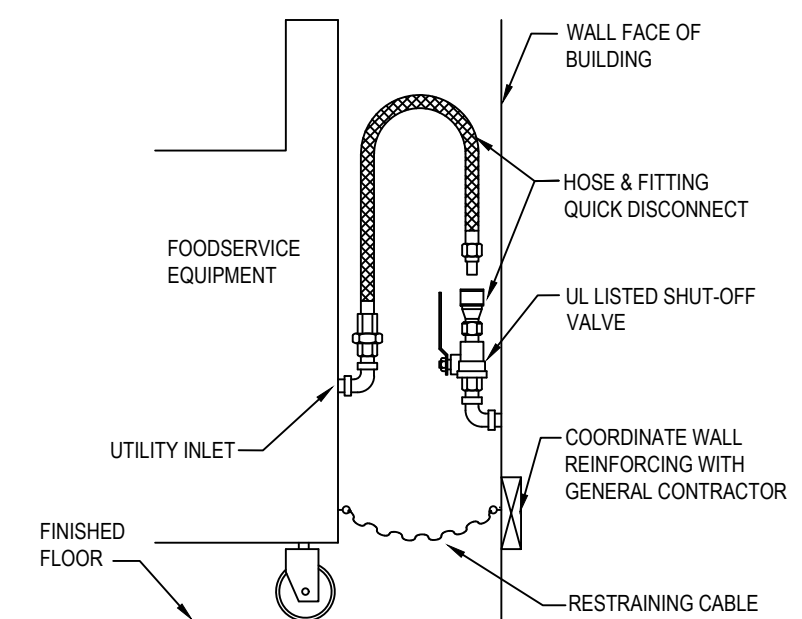
- NOTE:
1. LOCATE FLOOR DRAIN/SINK WHERE SHOWN ON DIMENSIONED ARCHITECTURAL PLAN. IF FLOOR STRUCTURE INTERFERES WITH FLOOR SINK, MOVE SIDWAYS IF POSSIBLE, OTHERWISE MOVE BACK. ALWAYS LOCATE WHERE EASILY ACCESSIBLE, BUT NOT IN FOOT TRAFFIC.
  2. IF SITUATION IS FLOOR SLAB ON GRADE, PROVIDE BACKFILL PER SPECIFICATIONS. IF CONCRETE FLOOR IS NOT EXISTING, SET DRAIN IN PLACE AND POUR AROUND IT, OR BLOCK OUT AND POUR IN LATER.
  3. IF CONCRETE FLOOR IS EXISTING, SAW CUT OR CORE DRILL IT. SET DRAIN BODY IN PLACE AND POUR AROUND IT.
  4. TOP OF THE FLOOR SINK / DRAIN SHOULD BE SET AT THE SAME ELEVATION AS THE SLAB AND THEN DISHED OUT 1/2\"/>

FLOOR DRAIN/SINK	8
Scale: NO SCALE	P-500



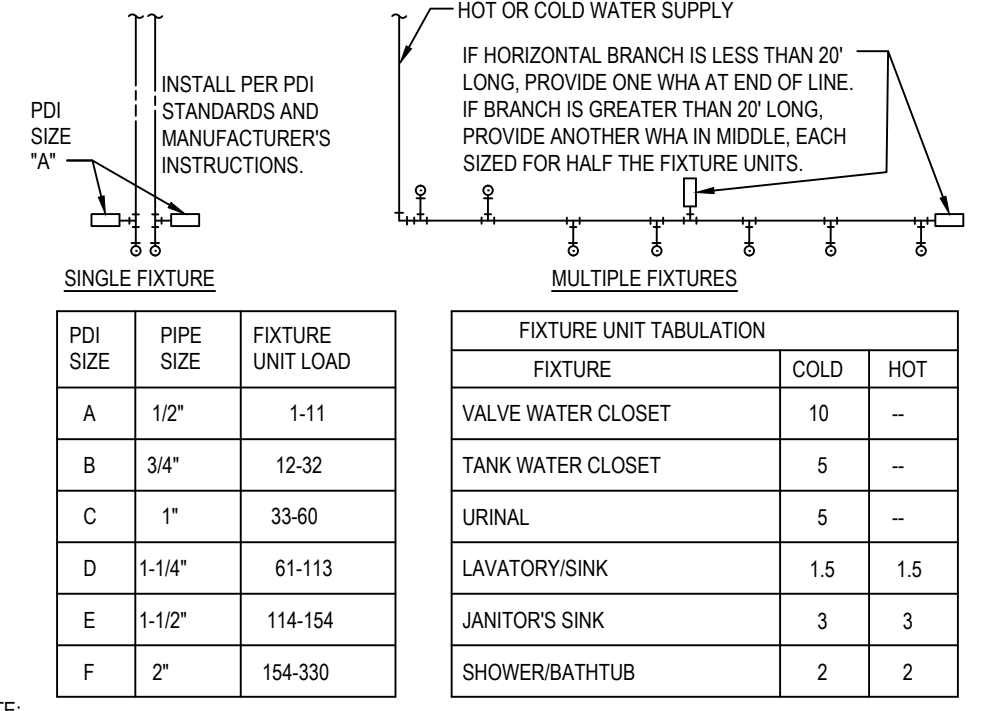
- NOTE:
1. ARRANGEMENT SHOWN IS SCHEMATIC. ADJUST TO SUIT FIELD CONDITIONS OR MEET LOCAL CODE REQUIREMENTS.
  2. PROVIDE COPPER PIPE, FITTINGS AND CONNECTORS ALL AROUND SINK AND TRAP.
  3. CONNECT TRAP FROM CENTER COMPARTMENT.

UTILITY/SINK	7
Scale: NO SCALE	P-500



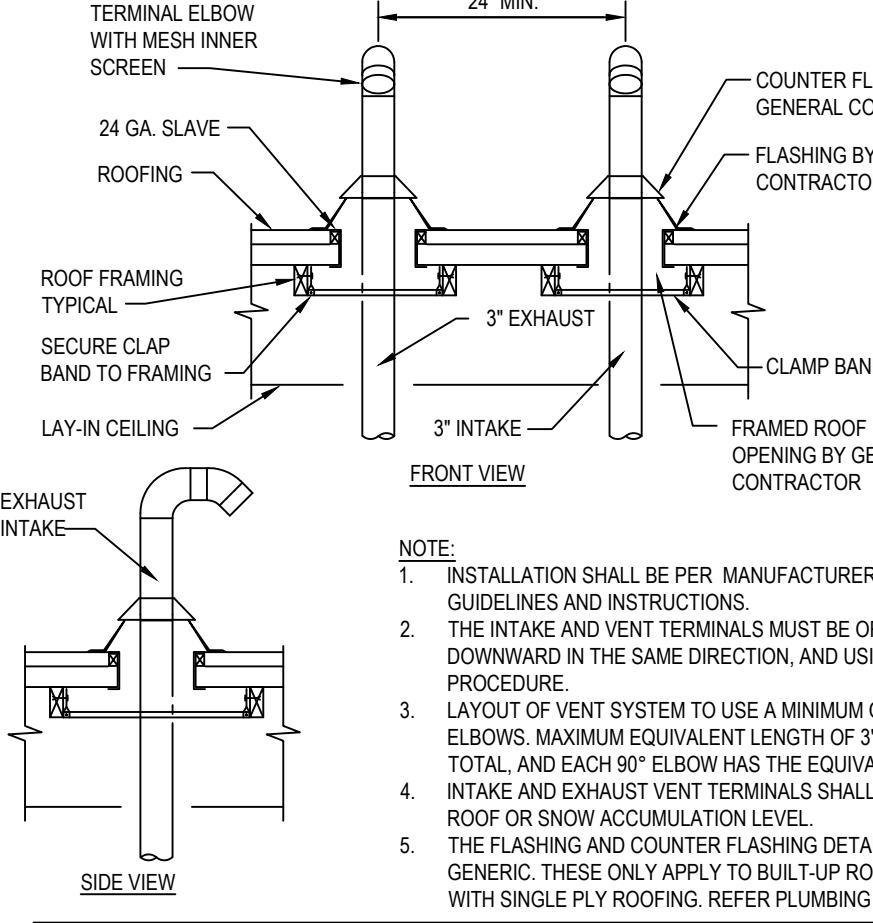
- NOTE:
1. IF UTILITY IS NOT AT FULL HEIGHT SHOWN, PROVIDE PIPING WITH ELBOWS TO RAISE INLET.

QUICK DISCONNECT	18
Scale: NO SCALE	P-500



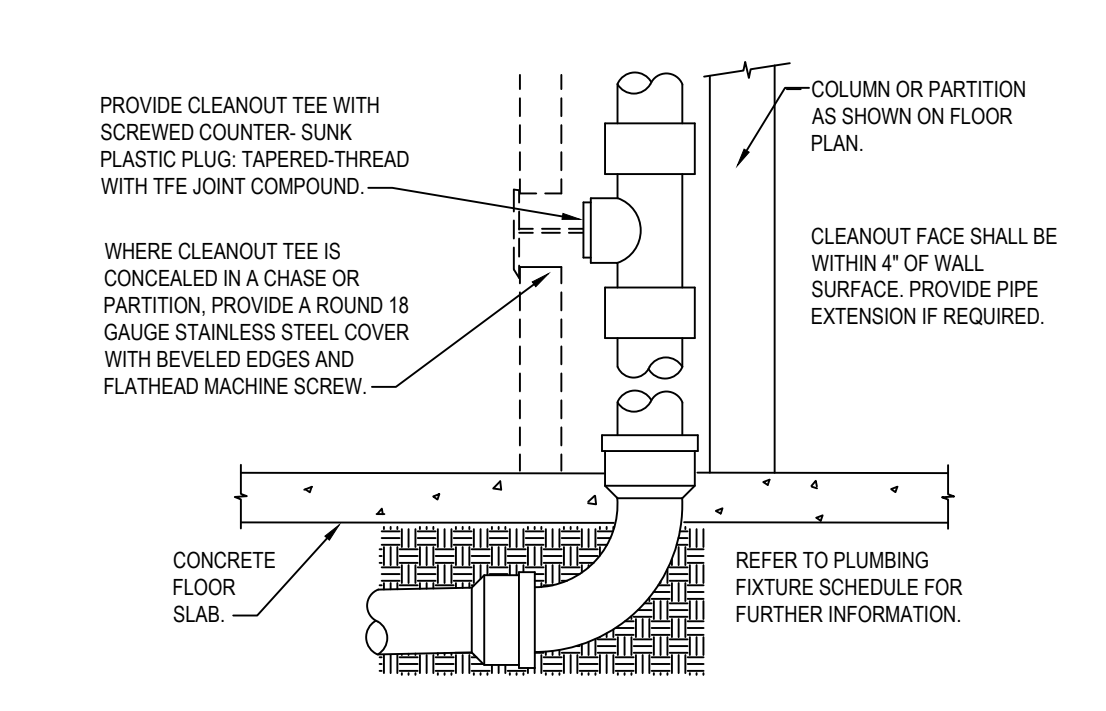
- NOTE:
1. DO NOT PROVIDE AIR CHAMBERS.
  2. PROVIDE WATER HAMMER ARRESTERS BY SIOUX CHIEF, PRECISION PLUMBING PRODUCTS, WATTS OR APPROVED EQUIVALENT WITH PISTON AND O-RING CONSTRUCTION, HAVING PDI #WH-201, ASSE # 1010 AND ANSI # A112.26.1M CERTIFICATION.
  3. INSTALL IN HORIZONTAL OR VERTICAL POSITION, BUT NEVER UPSIDE DOWN.
  4. INSTALL IN LINE WITH WATER FLOW DIRECTION IF POSSIBLE.
  5. SIZE THE UNITS AS SHOWN ON THE DRAWINGS AND/OR PER THE TABLES SHOWN ABOVE.

WATER HAMMER ARRESTERS	14
Scale: NO SCALE	P-500



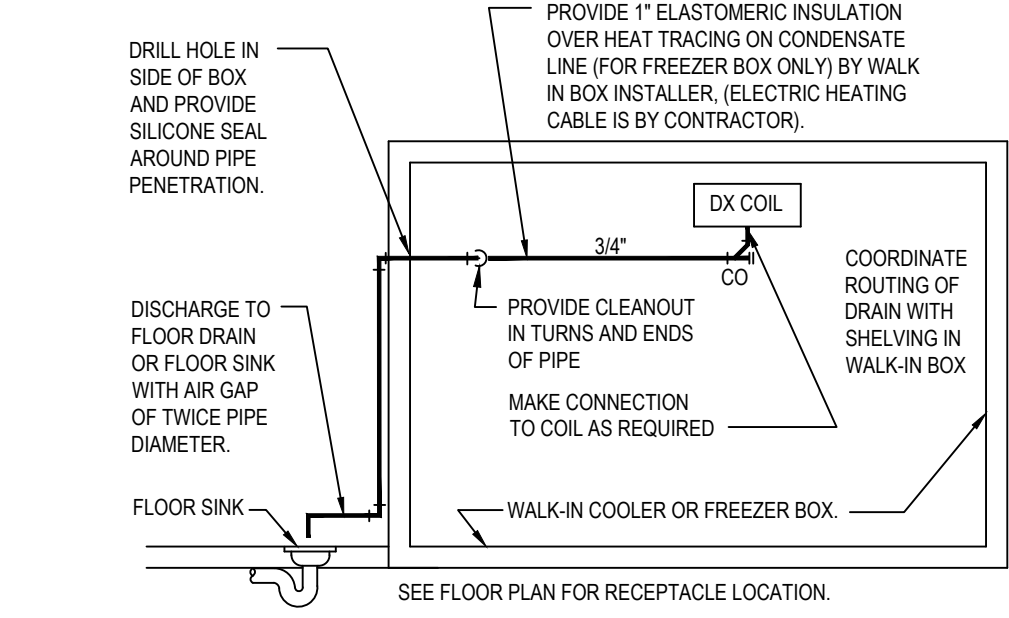
- NOTE:
1. INSTALLATION SHALL BE PER MANUFACTURER'S INSTALLATION GUIDELINES AND INSTRUCTIONS.
  2. THE INTAKE AND VENT TERMINALS MUST BE ORIENTED FACING DOWNWARD IN THE SAME DIRECTION, AND USING THE SAME PROCEDURE.
  3. LAYOUT OF VENT SYSTEM TO USE A MINIMUM OF VENT PIPE AND ELBOWS. MAXIMUM EQUIVALENT LENGTH OF 3\"/>

WH DIRECT VENT DETAIL	10
Scale: NO SCALE	P-500



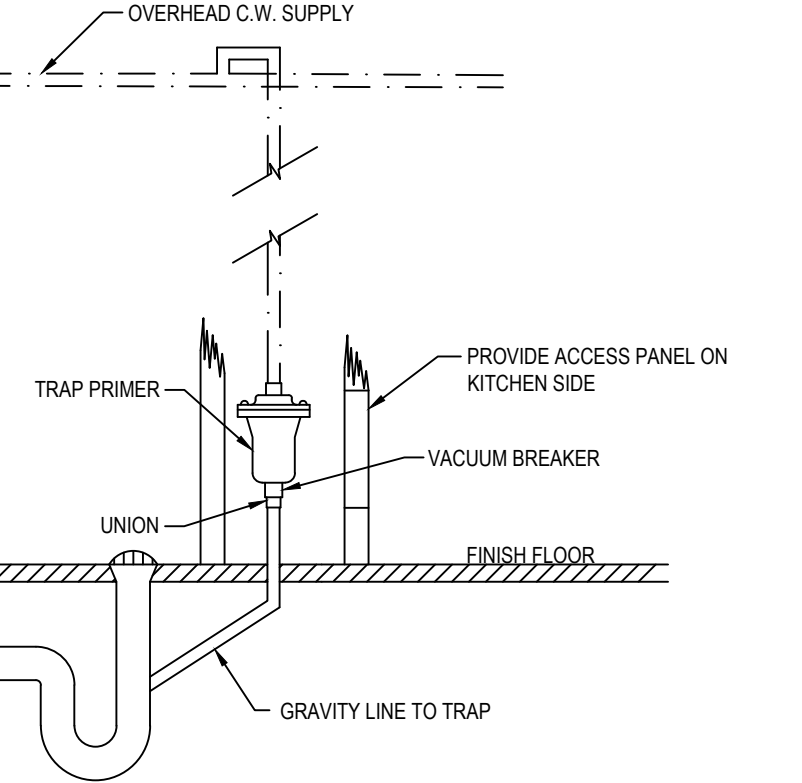
- NOTE:
1. PROVIDE WCO WHERE SHOWN ON PLAN. LOCATE ABOVE FIXTURE FLOOR RM.
  2. CONSULT LOCAL CODES FOR OTHER WCO REQUIREMENTS.

WALL CLEANOUT	6
Scale: NO SCALE	P-500

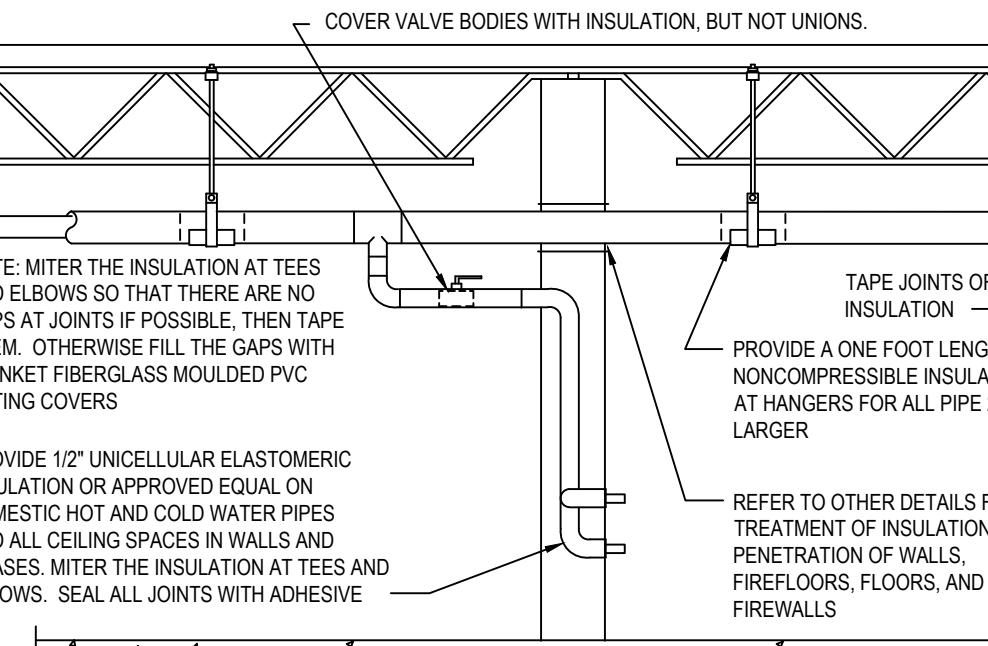


- NOTE:
1. INSTALL PIPE A MINIMUM OF 76\"/>

WALK - IN BOX CONDENSATE DRAIN	2
Scale: NO SCALE	P-500

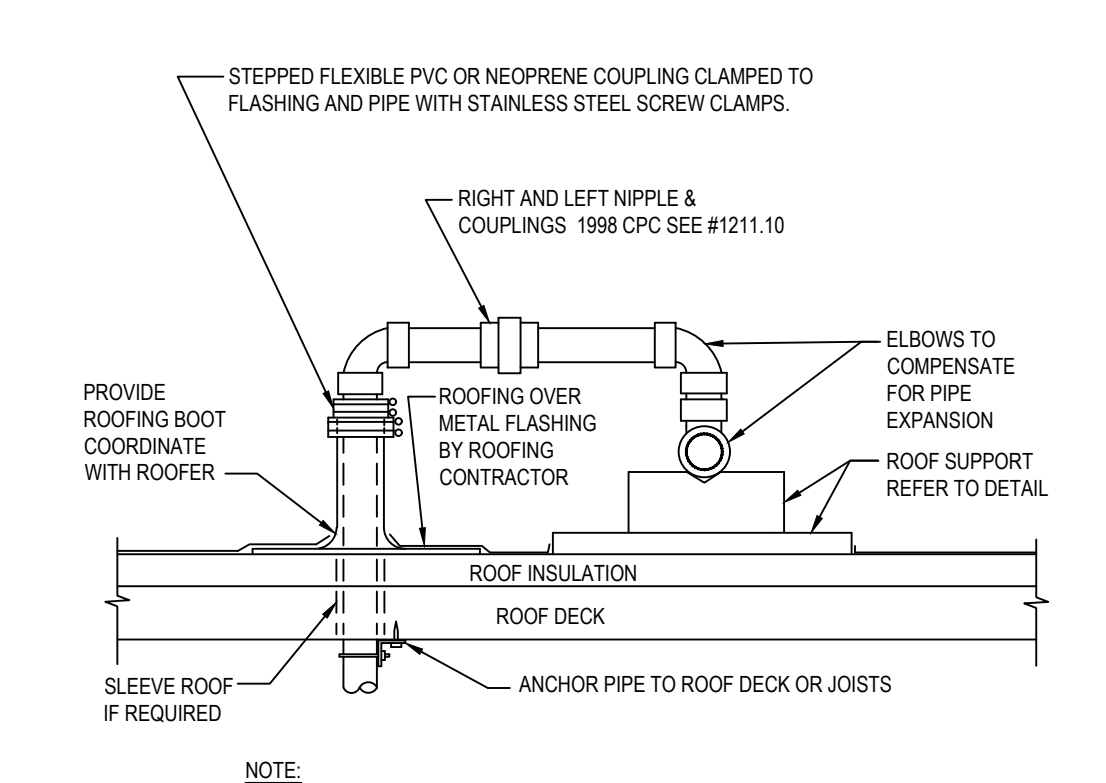


PREP. AREA TRAP PRIMER DETAIL	17
Scale: NO SCALE	P-500



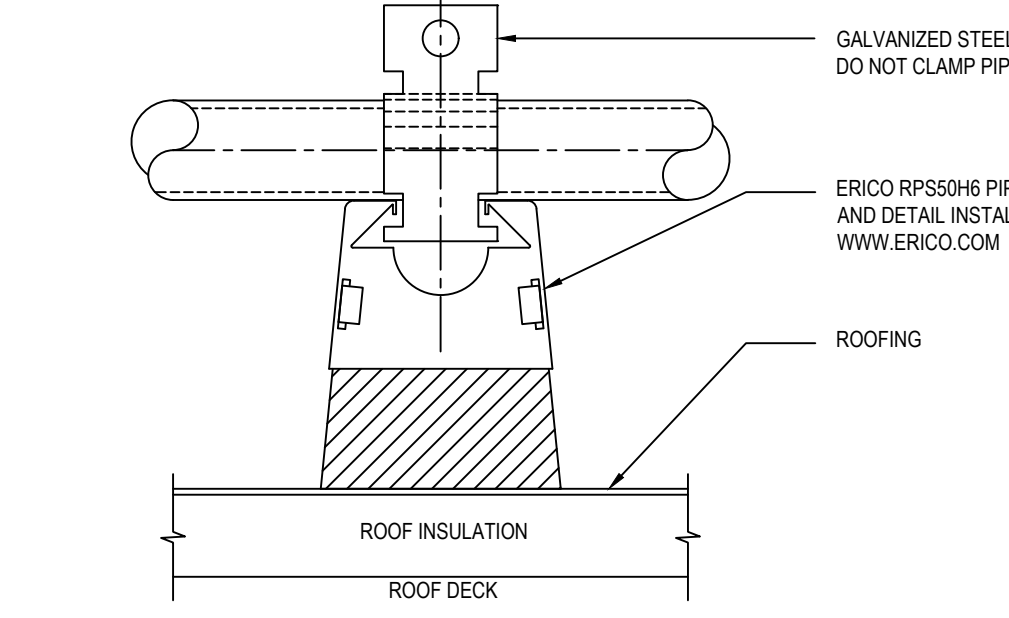
- NOTE:
1. PROVIDE 1/2\"/>

PIPE INSULATION	13
Scale: NO SCALE	P-500



- NOTE:
1. REFER TO PLANS FOR PIPE SIZE(S) AND LOCATION(S).
  2. WELDED OR SCREWED FITTINGS AS SPECIFIED FOR PIPE SIZE.
  3. LOCATE PENETRATION MINIMUM 18\"/>

GAS PIPE ROOF PENETRATION	5
Scale: NO SCALE	P-500



- NOTE:
1. LOCATE AT TURNS OF PIPE, AT 4\"/>

ROOF PIPE SUPPORT	1
Scale: NO SCALE	P-500



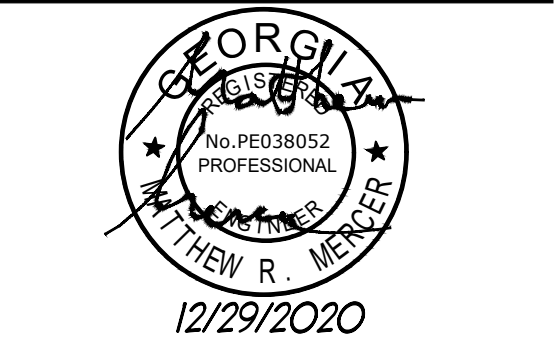
PANDA RESTAURANT GROUP INC.  
1683 Walnut Grove Ave.  
Rosemead, California  
91770  
Telephone: 626.799.9898  
Facsimile: 626.372.8288

All ideas, designs, arrangement and plans indicated, or represented by this drawing are the property of Panda Express Inc. and were created for use on this specific project. None of these ideas, designs, arrangements or plans may be used by or disclosed to any person, firm, or corporation without the written permission of Panda Express Inc.

REVISIONS:

ISSUE DATE:
1 95% SUBMITTAL 01/11/2020
2 100% SUBMITTAL 04/16/2021
3 100% RESUBMITTAL 05/14/2021
4 FINAL SUBMITTAL 06/08/2021

DRAWN BY: MRM  
  
PANDA PROJECT #: D7395  
ARCH PROJECT #:



PANDA EXPRESS  
ROBINS AFB SHOPPING CENTER  
ROBINS AFB, GA

P-500  
PLUMBING DETAILS

BID SET - 2021/06/28