

CORNER RECORD

Agency Index

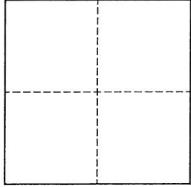
BK 148 PG 15

Document Number

CR 16096City of OaklandCounty of Alameda, CaliforniaBrief Legal Description Intersection of 92nd Avenue and F Street

CORNER TYPE

COORDINATES (Optional)



- ☐ Government Corner ☒ Control
☐ Meander ☐ Property
☐ Rancho ☐ Other

Date of Survey 2022-05-17

N. _____ E. _____

Elevation _____

Units ☐ Metric ☐ U.S. Survey Foot

Horizontal Datum _____

Zone _____ Epoch Date _____

Vertical Datum _____

☐ Complies with Public Resources Code §§8801-8819☐ Complies with Public Resources Code §§8890-8902

PLS Act Ref.:

☐ 8765(d)☒ 8771☐ 8773☐ Other:

Corner/

☒ Left as found☐ Established☐ Rebuilt☒ Pre-Construction

Monument:

☐ Found and tagged☐ Reestablished☒ Referenced☐ Post-Construction

Narrative of corner identified and monument as found, set, reset, replaced, or removed:

☐ See sheet #2 for description(s):

SURVEYOR'S STATEMENT

This Corner Record was prepared by me or under my direction in conformance with

the Professional Land Surveyors' Act on June 27, 2022

Signed

P.L.S. or R.C.E. No.

8040

COUNTY SURVEYOR'S STATEMENT

This Corner Record was received _____

and examined and filed _____

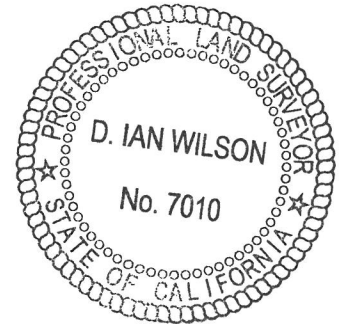
JUN 3 2022

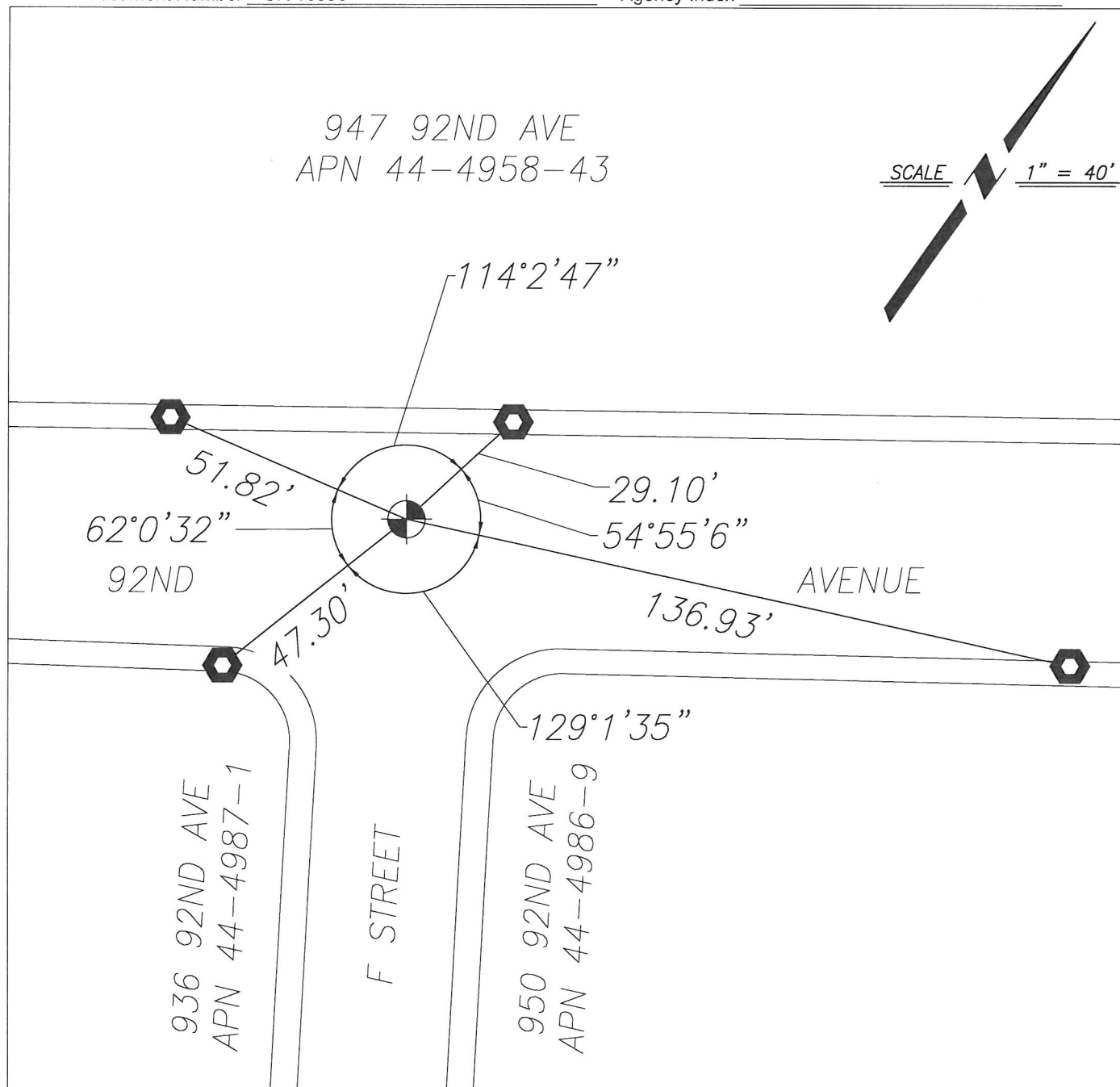
Signed

P.L.S. or R.C.E. No.

7010Title ALAMEDA COUNTY SURVEYOR

County Surveyor's Comment



REFERENCE

1. CITY OF OAKLAND MONUMENT PER MONUMENT INDEX SHEET 53

LEGEND

FOUND MONUMENT IN WELL, CONCRETE
MONUMENT WITH NAIL



SET CUT CROSS ON CONCRETE AS
REFERENCE POINT

NOTES

1. ALL REFERENCES ARE
ALAMEDA COUNTY RECORDS