

BK 27 Pg 25

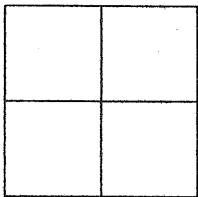
CORNER RECORD

Document Number CR 3008

City of OAKLAND

County of ALAMEDA, California

Brief Legal Description WELL MONUMENT LOCATED WITHIN THE INTERSECTION OF HIGH STREET AND CARRINGTON STREET. (19NE20)



CORNER RECORD

Government Corner ☐ Control ☒
Meander ☐ Property ☐
Rancho ☐ Other ☐
Date of Survey 04-14-07

COORDINATES
(Optional)

N. _____
E. _____
Zone _____ Datum _____
Elev. _____

Corner — Left as found ☒ Found and tagged ☐ Established ☐ Reestablished ☐ Rebuilt ☐

Identification and type of corner found: Evidence used to identify or procedure used to establish or reestablish the corner:
FOUND IRON PIN IN WELL MONUMENT LOCATED IN THE INTERSECTION OF HIGH STREET AND CARRINGTON STREET. AS SHOWN ON OAKLAND MONUMENT MAP, PG 123.

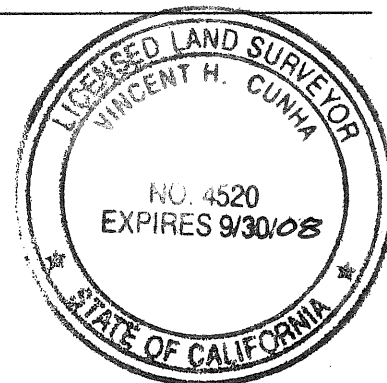
THIS POINT WAS REFERENCED PRIOR TO A CONSTRUCTION PROJECT IN THE VICINITY.

A description of the physical condition of the monument as found and as set or reset:
FOUND AND SET POINTS AS SHOWN ON PAGE 2.

SURVEYOR'S STATEMENT

This Corner Record was prepared by me or under my direction in conformance with the Land Surveyors' Act on APRIL 18, 2007.

Signed Vincent H. Cunha L.S. Number LS 4520
VINCENT H. CUNHA

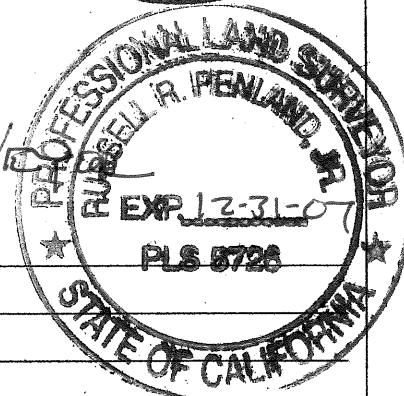


COUNTY SURVEYOR'S STATEMENT

This Corner Record was received 5-9-2007 and examined and filed 9-10-2007.

Signed Richard Title County Surveyor

County Surveyor's Comment

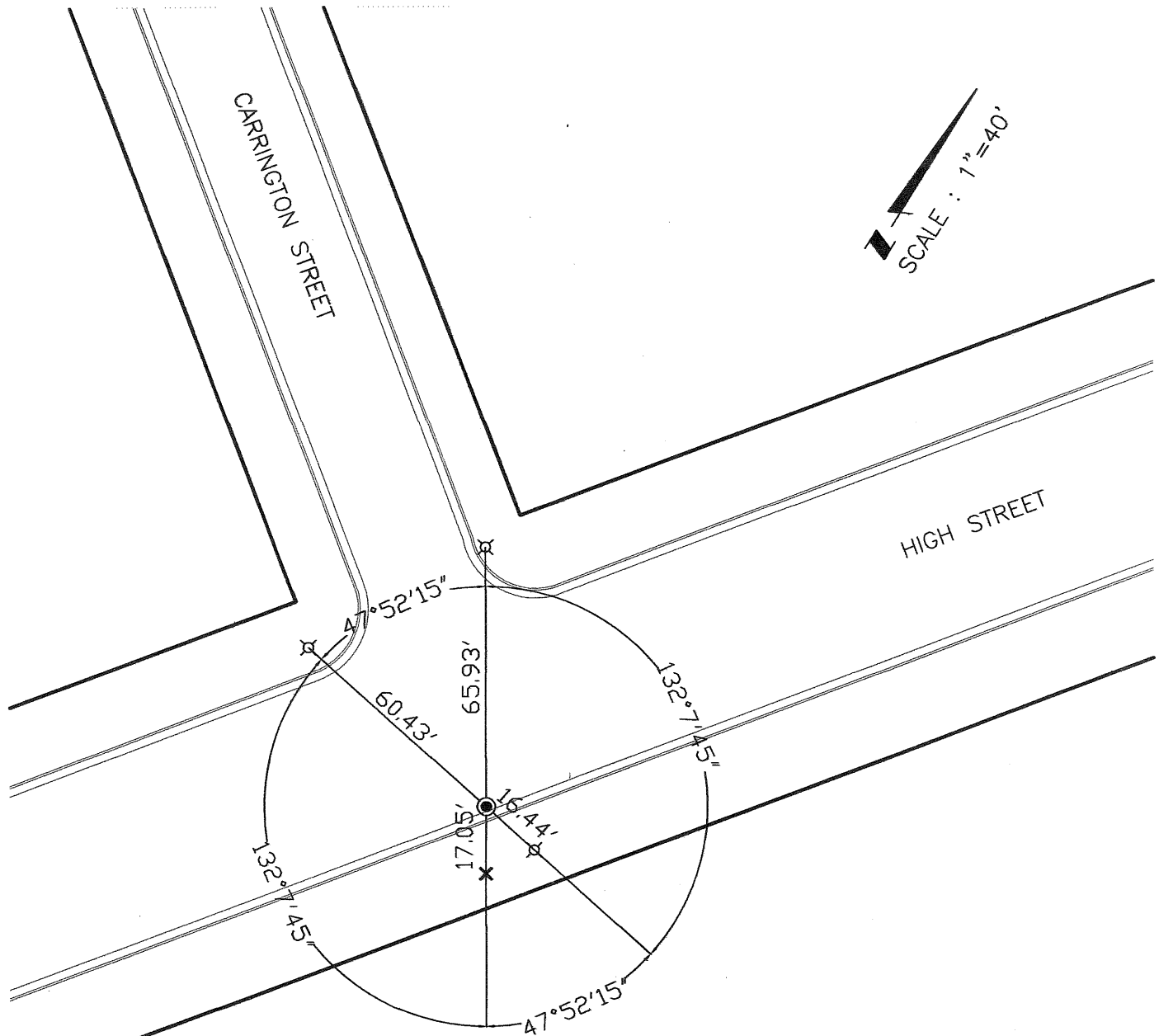


LEGEND

⊙ FOUND STANDARD STREET MONUMENT (19NE20)

× FOUND CUT CROSS

⌘ SET NAIL AND TAG LS 4520



REF: CR 2701 (24CR12)