

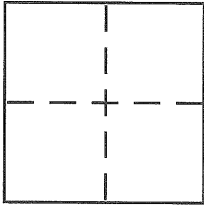
CORNER RECORD

Document Number CR 6037

City of OAKLAND

County of ALAMEDA, California

Brief Legal Description LOT 4, BLOCK G, EASTMONT (SH 31)



CORNER TYPE

Government Corner ☐ Control ☐
 Meander ☐ Property ☒
 Rancho ☐ Other ☐
 Date of Survey DEC 10, 2013

COORDINATES (Optional)

N. _____
 E. _____
 Zone _____ NAD27 ☐ NAD83 ☐
 NAD83 Epoch _____
 Elev. _____
 Vert. Datum: NGVD29 ☐ NAVD88 ☐
 Meas. Units: Metric ☐ Imperial ☐

Corner - Left as found ☐ Found and tagged ☐ Established ☒ Reestablished ☐ Rebuilt ☐

Identification and type of corner found: Evidence used to identify or procedure used to establish or reestablish the corner:

SEE OTHER SIDE

A description of the physical condition of the monument as found and as set or reset:

SEE OTHER SIDE

SURVEYOR'S STATEMENT

This Corner Record was prepared by me or under my direction in conformance with the Land Surveyor's Act on JANUARY 14 2014

Signed Robert J. Brunel P.L.S or R.C.E. No. 4961

COUNTY SURVEYOR'S STATEMENT

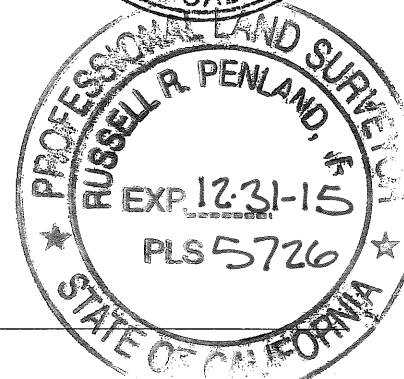
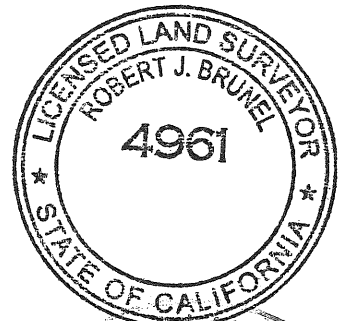
This Corner Record was received 1-16-14

and examined and filed 2-24-14

Signed Russell R. Penland P.L.S or R.C.E. No. 5726

Title COUNTY SURVEYOR

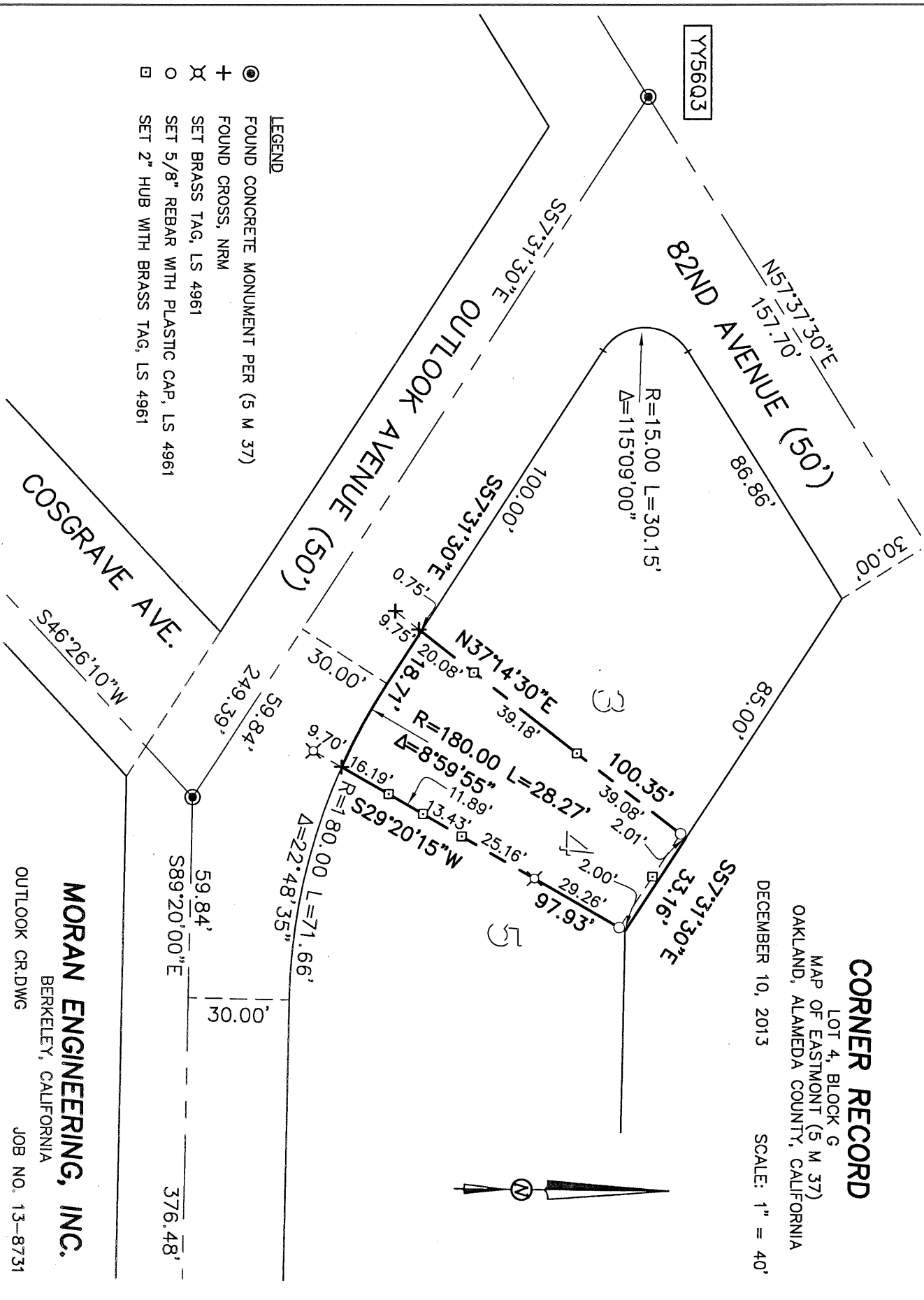
County Surveyor's Comment _____



TY56Q3

LOT 4, BLOCK G
MAP OF EASTMONT (5 M 37)
OAKLAND, ALAMEDA COUNTY, CALIFORNIA

SCALE: 1" = 40'



MORAN ENGINEERING, INC.

BERKELEY, CALIFORNIA

OUTLOOK CR.DWG

JOB NO. 13-8731