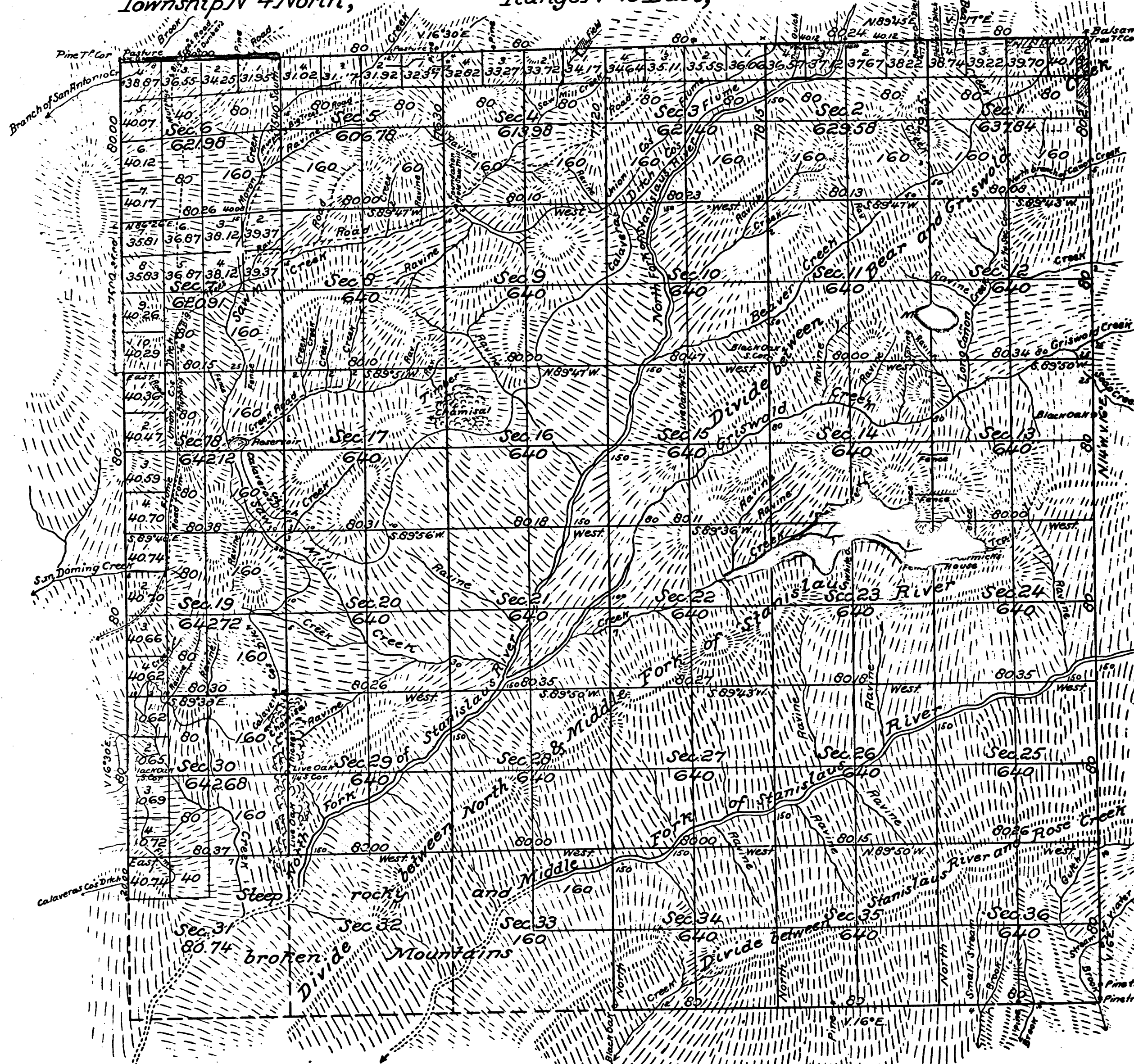


Township N°4 North, Range N°15 East, Mount Diablo Meridian.



Aggregate Area of Public land surveyed 21,240.73 Acres.
Estimated Area of unsurveyed Mountain land 1,680.00
Aggregate 22,920.73

Note. Section lines run with a Magnetic Var. of 16° East.
North and South section lines not otherwise noted run on a Course of N. 14° W.

| Survey Designated | By whom surveyed | Date of Contract | Amount of survey | When surveyed |
|---------------------------------------|------------------|---------------------------------|--|------------------------------|
| Township lines colored yellow | Fleming Amyx | September 30 th 1858 | | 1859 |
| Part of North bound of T colored red | H. F. Terry | November 13 th 1871 | | 1871 |
| Part of North bound of T colored blue | G. B. Tolman | January 3 rd 1874 | | 1874 |
| Part of West bound of T colored green | A. B. Beauvais | June 16 th 1875 | | 1875 |
| Part of East bound of T colored red | J. M. Anderson | September 22 nd 1876 | 57.000 ⁰⁰ 212 ⁰⁰ | 1876 |
| Section lines | | | 57.71.63 | October 8 th 1876 |

The above Map of Township N°4 North, Range N°15 East, Mount Diablo Meridian is strictly conformable to the field notes of the surveys thereof, on file in this Office, which have been examined and approved.
Surveyor General's Office,
San Francisco, California
May 28th 1877.

DEPARTMENT OF THE INTERIOR,
GENERAL LAND OFFICE,
Washington, D. C. Sept. 6, 1907.
I hereby certify that this is a true copy
of the plat of official survey of the lands
to which it relates, on file in this office.

W. H. Collins
Surv. Gen. Cal.

W. H. Collins
Recorder, General Land Office.

