

PARCEL MAP N^o 35-16

IN THE COUNTY OF MONO, STATE OF CALIFORNIA,
BEING A SUBDIVISION OF A PORTION OF THE N.W.
¼ OF THE S.W. ¼ OF SECTION 32, T.1 S., R.32 E., M.D.M.

BASIS OF BEARINGS:

The record bearing of N00°03'21"W of the West line of the Southwest Quarter of Sec. 32, T.1 S., R.32 E., M.D.M., as shown on Parcel Map No. 35-8, filed in Volume 1, Pages 82 & 82A of Parcel Maps, was used as the basis of bearings shown on this map.

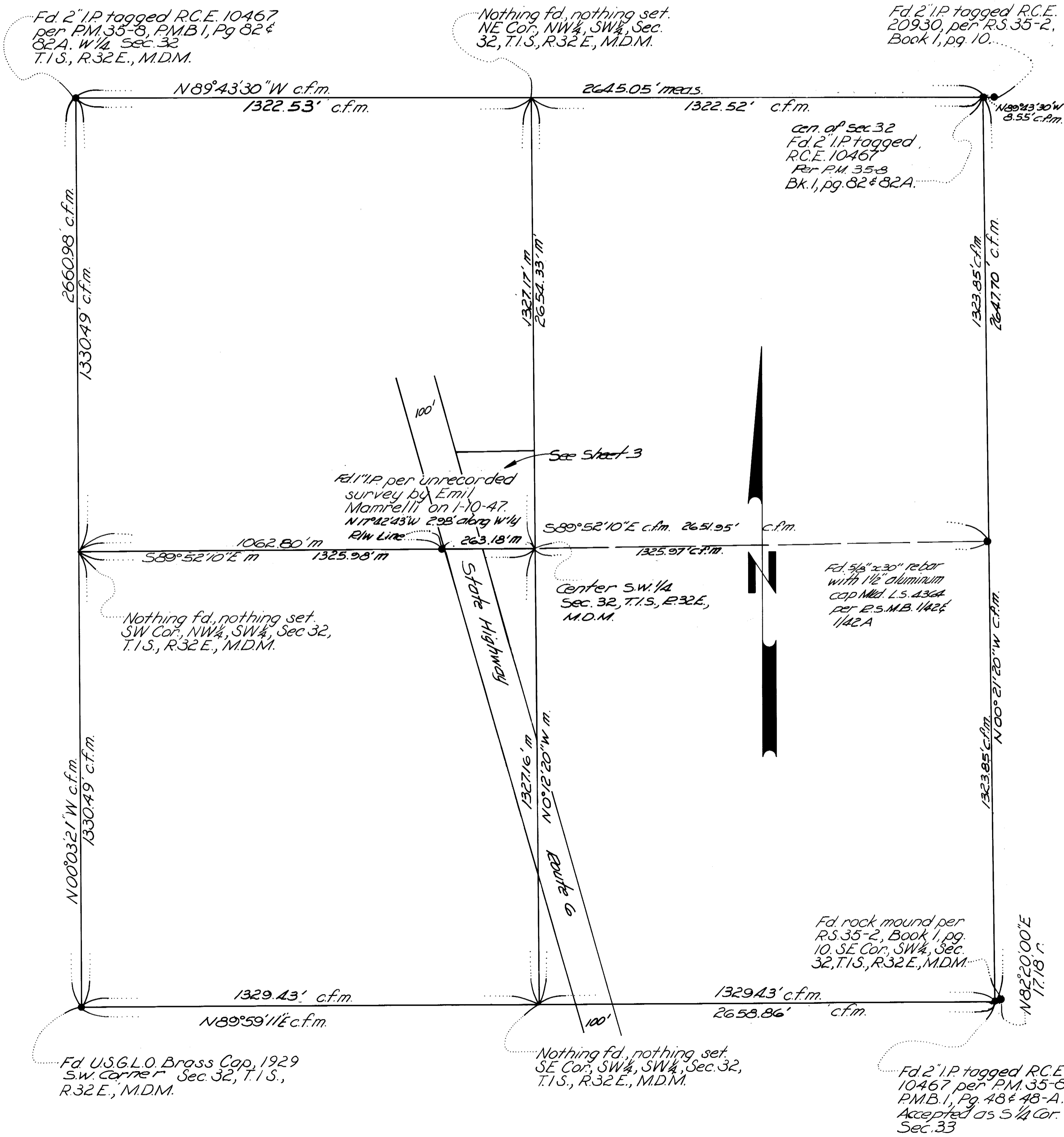
MONUMENTATION:

- Indicates set 2" I.P. & Tag L.S. 3462
- Indicates a found point as noted.

NOTE:

c.f.m. = Calculated from measurements

m = Measured



File Vol. 2 Page 82-7