

CORNER RECORD

00-53 11 Cr 053

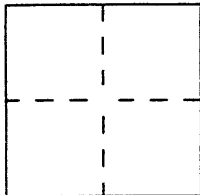
852

Document Number

855

City of Oakland County of Alameda, California

Brief Legal Description Boundary survey of a portion of Lots 11 and 12, Block 7 of Map of "A Revised Map of Rock Ridge Park", filed for records in Book 25 of Maps, Page 21, Alameda County Records, California.



CORNER TYPE

COORDINATE (Optional)

Government Corner ☐ Control ☐
 Meander ☐ Property ☒
 Rancho ☐ Other ☐
 Date of Survey January 28, 1992

N. _____
 E. _____
 Zone _____ Datum _____
 Elev. _____

Corner— Left as found ☐ Found and tagged ☐ Established ☐ Reestablished ☐ Rebuilt ☐

Identification and type of corner found: Evidence used to identify or procedure used to establish or reestablish the corner:

Found cut cross

A description of the physical condition of the monument as found and set or reset: _____

Set 1/2" x 18" Rebar with Plastic Cap LS 3300

Set Nail and Tag LS 3300

Set Cut Crosses

SURVEYOR'S STATEMENT

This Corner Record was prepared by me or under my direction in conformance with

the Land Surveyor's Act on 2-24 19 97.

Signed Wiley J. Pierce Jr. L.S. OR R.C.E. Number L.S. 3300

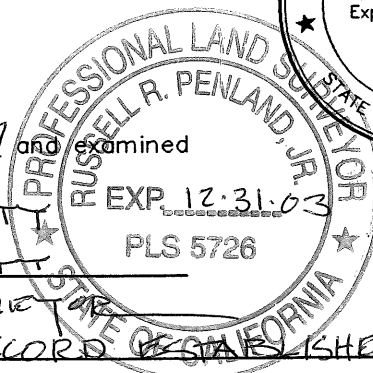


COUNTY SURVEYOR'S STATEMENT

This Corner Record was received 2-13, 1997 and examined

and filed 4-10-2000 Deputy

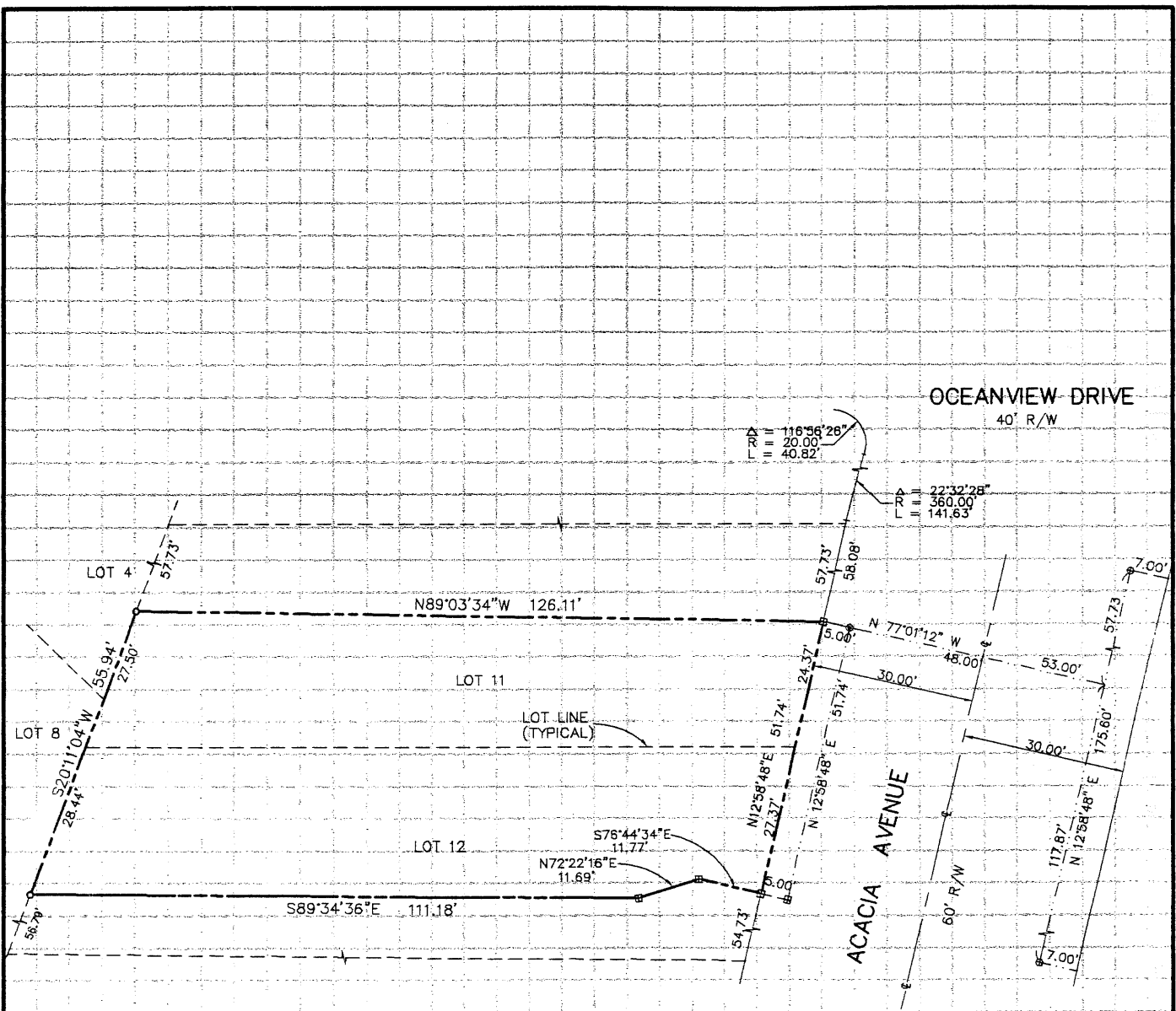
Signed Russell R. Penland Jr. Title County Surveyor



County Surveyor's Comment SINCE THIS CORNER RECORD ESTABLISHES ONE OR MORE POINTS OR LINES NOT SHOWN ON ANY SUBDIVISION MAP, OFFICIAL MAP, OR RECORD OF SURVEY, THE COUNTY SURVEYOR IS OF THE OPINION THAT A RECORD OF SURVEY SHOULD ALSO BE FILED. SEE 8762(D)(E) OF THE L.S. ACT.

NOTICE SENT 4-10-2000, AS PER 8773.2(C)

528



LEGEND

- ⊕ FOUND CUT CROSS
- SET 1/2" X 18" REBAR WITH PLASTIC CAP
- LS-3300
- ⊞ SET CUT CROSS
- SET NAIL & TAG
- LS-3300
- BOUNDARY LINE
- RIGHT-OF-WAY LINE
- MONUMENT LINE
- STREET CENTERLINE
- R/W RIGHT-OF-WAY
- (T) TOTAL DISTANCE
- C CENTERLINE