

CORNER RECORD

Agency Index

BK 148 PG 32

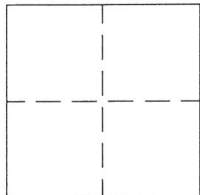
Document Number

CR 16058

City of BERKELEYCounty of ALAMEDA, CaliforniaBrief Legal Description EASTERLY INTERSECTION, SHATTUCK AVE & DWIGHT WY

CITY MONUMENT B0342

CORNER TYPE



- ☐ Government Corner ☒ Control
☐ Meander ☐ Property
☐ Rancho ☐ Other

Date of Survey 4/13/2022

COORDINATES (Optional)

N: _____ E: _____

Elevation: _____

Units: ☐ Metric ☐ U.S. Survey Foot

Horizontal Datum _____

Zone _____ Epoch Date _____

Vertical Datum _____

☐ Complies with Public Resources Code §§ 8801-8819☐ Complies with Public Resources Code §§ 8890-8902PLS Act Ref: ☐ 8765(d) ☒ 8771 ☐ 8773 ☐ Other:

Corner/
Monument: ☒ Left as found ☐ Established ☐ Rebuilt ☒ Pre-Construction
☐ Found and tagged ☐ Reestablished ☒ Referenced ☐ Post-Construction

Narrative of corner identified and monument as found, set, reset, replaced, or removed:

☒ See sheet #2 for description(s): NO CLAIM IS MADE REGARDING THE CORRECTNESS OF THE POSITIONS OF SAID MONUMENTS, NOR THE DIMENSIONAL RELATIONSHIP TO STREET CENTERLINES OR PROPERTY BOUNDARIES. ALL LINE & CURVE DATA SHOWN IS MEASURED UNLESS OTHERWISE NOTED.

SURVEYOR'S STATEMENT

This Corner Record was prepared by me or under my direction in conformance with

the Professional Land Surveyors' Act on APRIL 26th, 2022Signed Mark E. Reinhardt P.L.S. No. 6392

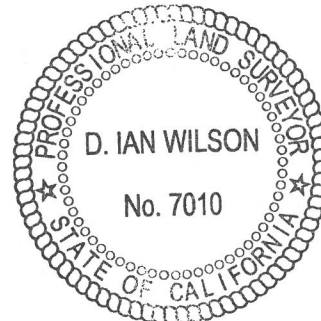
COUNTY SURVEYOR'S STATEMENT

This Corner Record was received JUL 19 2022

and examined and filed _____

Signed D. Ian Wilson P.L.S. or R.C.E. No. 7010Title ALAMEDA COUNTY SURVEYOR

County Surveyor's Comment

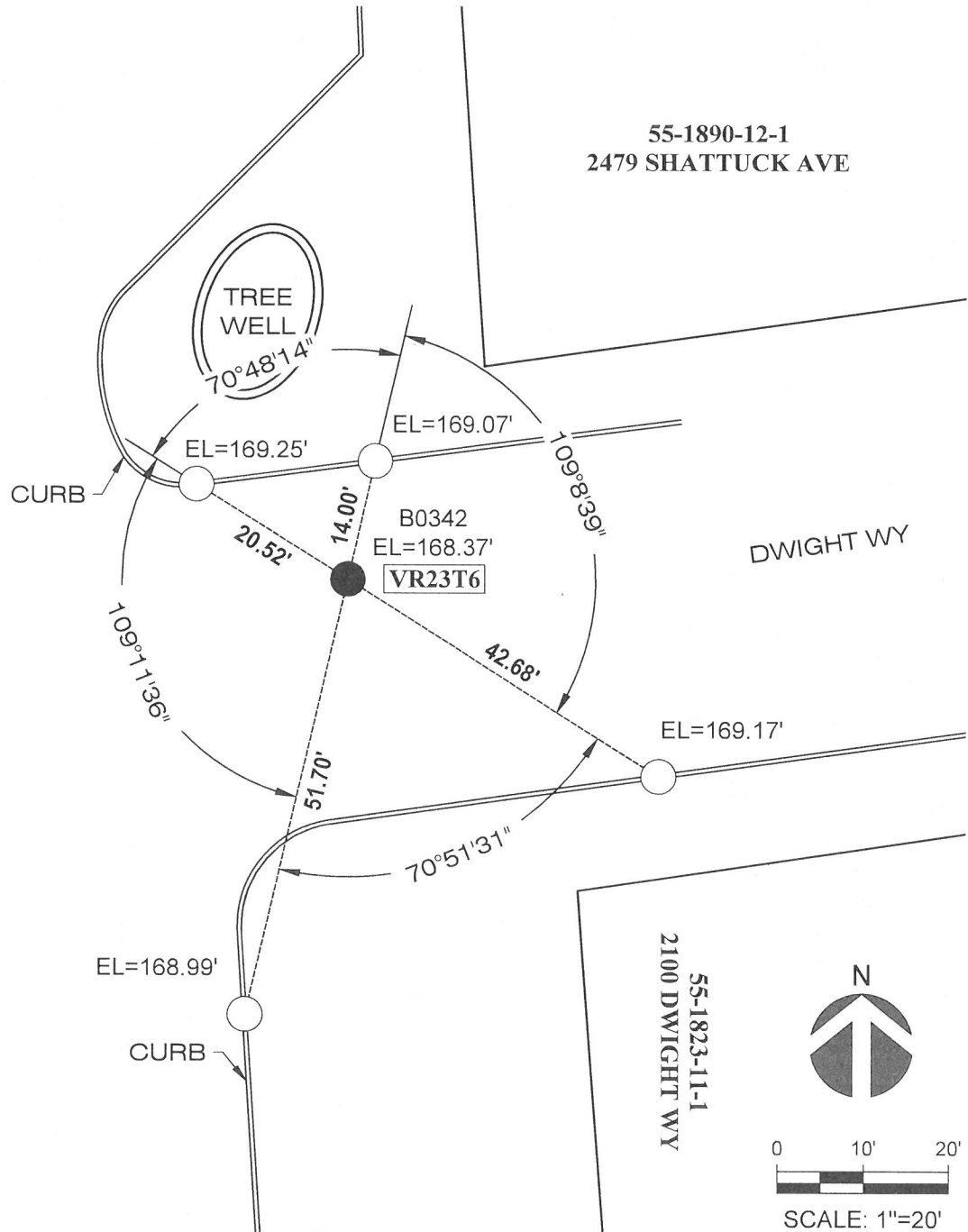


55-1890-12-1
2479 SHATTUCK AVE

ISLAND

SHATTUCK AVE

ISLAND



LEGEND

MONUMENT FOUND

● (B0342) 1/4" IRON PIN IN MONUMENT WELL per (R1)

TIE FOUND

○ NAIL & WASHER "EBMUD" IN TOP CURB, NO REFERENCE

REFERENCE

(R1) Corner Record 5451

TIES per (R1) WERE SEARCHED FOR & NOT FOUND

NOTES

All line & curve data shown is measured unless otherwise noted.

All elevations are based on City of Berkeley Datum per R1.

AA##A#

ALAMEDA COUNTY
MONUMENT ID

