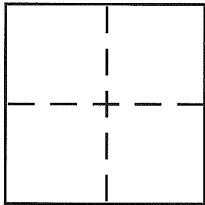


CORNER RECORDDocument Number CR 5393
County of ALAMEDA, CaliforniaCity of CASTRO VALLEY
Brief Legal Description MONUMENT PRESERVATION SURVEY**CORNER TYPE**

Government Corner ☐ Control ☐
 Meander ☐ Property ☐
 Rancho ☐ Other ☐
 Date of Survey FEB 25-27, 2013

COORDINATES (Optional)

N. _____
 E. _____
 Zone _____ NAD27 ☐ NAD83 ☐
 NAD83 Epoch _____
 Elev. _____
 Vert. Datum: NGVD29 ☐ NAVD88 ☐
 Meas. Units: Metric ☐ Imperial ☐

Corner - Left as found ☒ Found and tagged ☐ Established ☐ Reestablished ☐ Rebuilt ☐

Identification and type of corner found: Evidence used to identify or procedure used to establish or reestablish the corner:

SEE PLAT
IN CONFORMANCE WITH SECTION 8771 OF THE PROFESSIONAL
LAND SURVEYORS ACT, THIS CORNER RECORD IS BEING FILED TO
ESTABLISH THE POSITION OF AN EXISTING MONUMENT PRIOR TO
STREET OR HIGHWAY CONSTRUCTION.

A description of the physical condition of the monument as found and as set or reset: _____

SURVEYOR'S STATEMENT

This Corner Record was prepared by me or under my direction in conformance with

the Land Surveyor's Act on MARCH 7, 2013

Signed Charles N. Capp P.L.S. or R.C.E. No. LL6925

COUNTY SURVEYOR'S STATEMENT

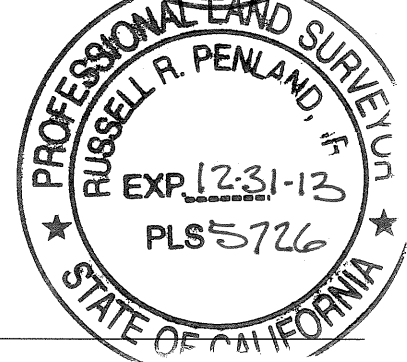
This Corner Record was received 3-11-2013

and examined and filed 6-10-2013

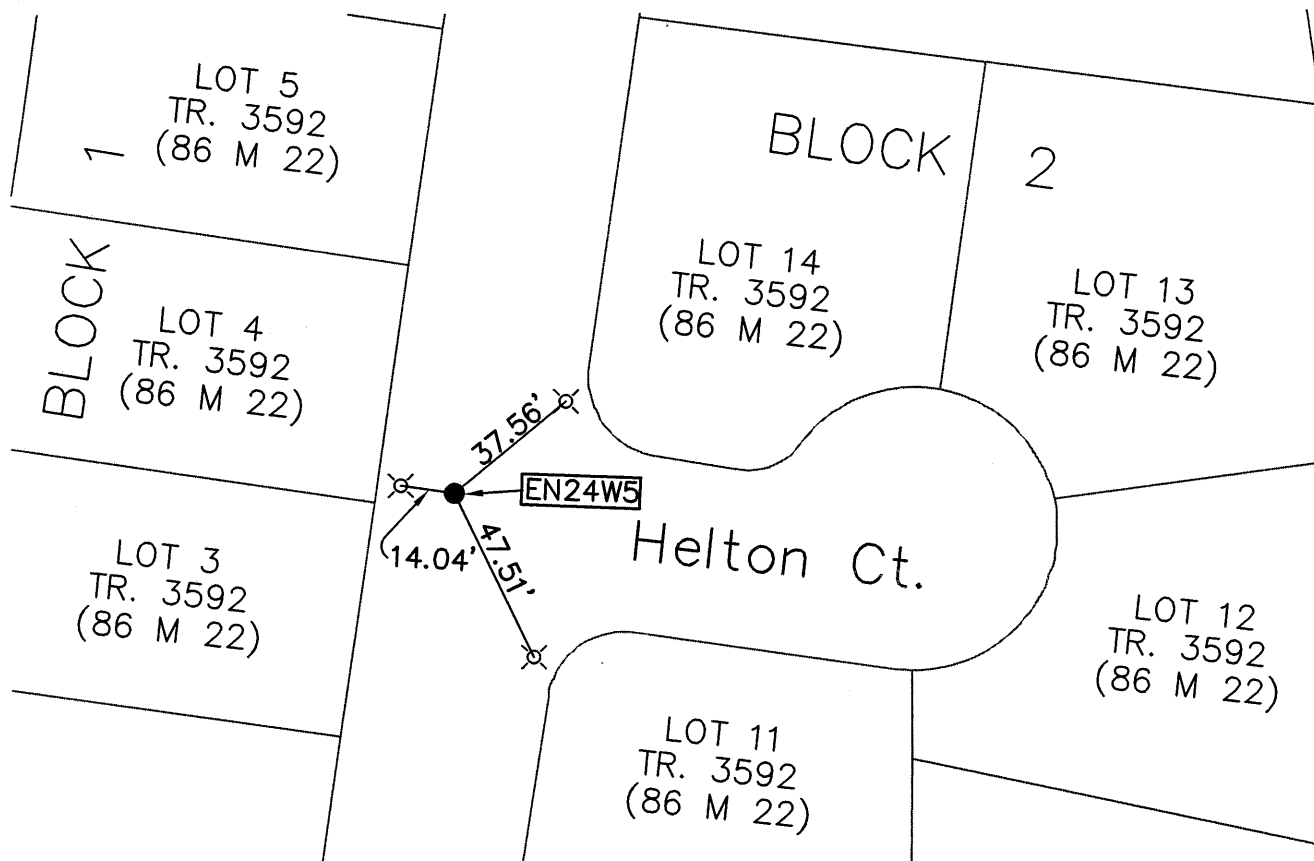
Signed Russell R. Penland P.L.S. or R.C.E. No. 5726

Title COUNTY SURVEYOR

County Surveyor's Comment _____



EN24W5



SCALE 1" = 50'

LEGEND

● FOUND STANDARD COUNTY WELL MONUMENT

⊗ SET LEAD AND TACK TAGGED LS 6925

AA##A#

COUNTY MONUMENT ID