

No. 223

COUNTY RECORDER'S CERTIFICATE  
FILED THIS 21st DAY OF July, 1975,  
AT 10:00 A.M., IN BOOK 1 OF Record of Survey Maps  
ON PAGE 22-22A AT THE REQUEST OF  
Associated Ranch Management

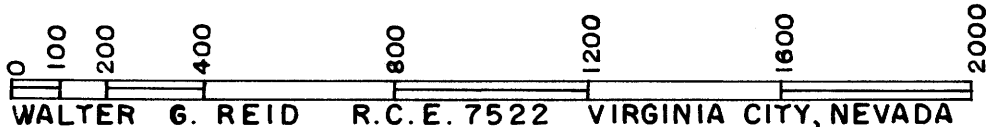
*Ann M. Webb*  
COUNTY RECORDER

RECORD OF SURVEY MAP 31-4  
ASSOCIATED RANCH MANAGEMENT  
TOPAZ PROPERTY  
IN SEC'S 12, 13 & 14, T. 9 N., R. 22 E.  
& IN SEC'S 7 & 18, T. 9 N., R. 23 E., M.D.B&M.  
MONO COUNTY, CALIFORNIA

BASIS OF BEARING

THE BEARING OF N 89° 54' 40" W FOR THE  
SOUTH LINE OF SECTION 13, T. 9 N., R. 22 E.,  
M.D.B&M. IS THE BASIS OF BEARINGS FOR  
THIS SURVEY.

SCALE - 1" = 400'



ENGINEER'S CERTIFICATE

THIS MAP CORRECTLY REPRESENTS A SURVEY MADE  
BY ME OR UNDER MY DIRECTION IN CONFORMANCE  
WITH THE REQUIREMENTS OF THE LAND SURVEYOR'S  
ACT AT THE REQUEST OF ASSOCIATED RANCH MAN-  
AGEMENT IN FEBRUARY 1973.

*Walter G. Reid*  
WALTER G. REID R.C.E. 7522  
VIRGINIA CITY, NEVADA

COUNTY SURVEYOR'S CERTIFICATE

THIS MAP HAS BEEN EXAMINED FOR CONFORMANCE  
WITH THE REQUIREMENTS OF THE LAND SURVEYOR'S  
ACT THIS 18th DAY OF June, 1975.

*Richard L. Cook* P.E.  
COUNTY SURVEYOR

SEE DETAIL 'A'

N 44° 52' 40" E 243.10'  
N 19° 26' 55" E 37.84'  
N 3° 14' 25" E 94.44'  
N 23° 54' 10" W 19.82'  
N 3° 44' E 289.85'  
S 31° 42' 50" W 66.18'  
S 74° 00' E 140.00'  
S 43° 00' W 171.60'  
N 81° 30' E 571.44'  
N 54° 30' E 224.40'  
S 62° 32' E 303.60'

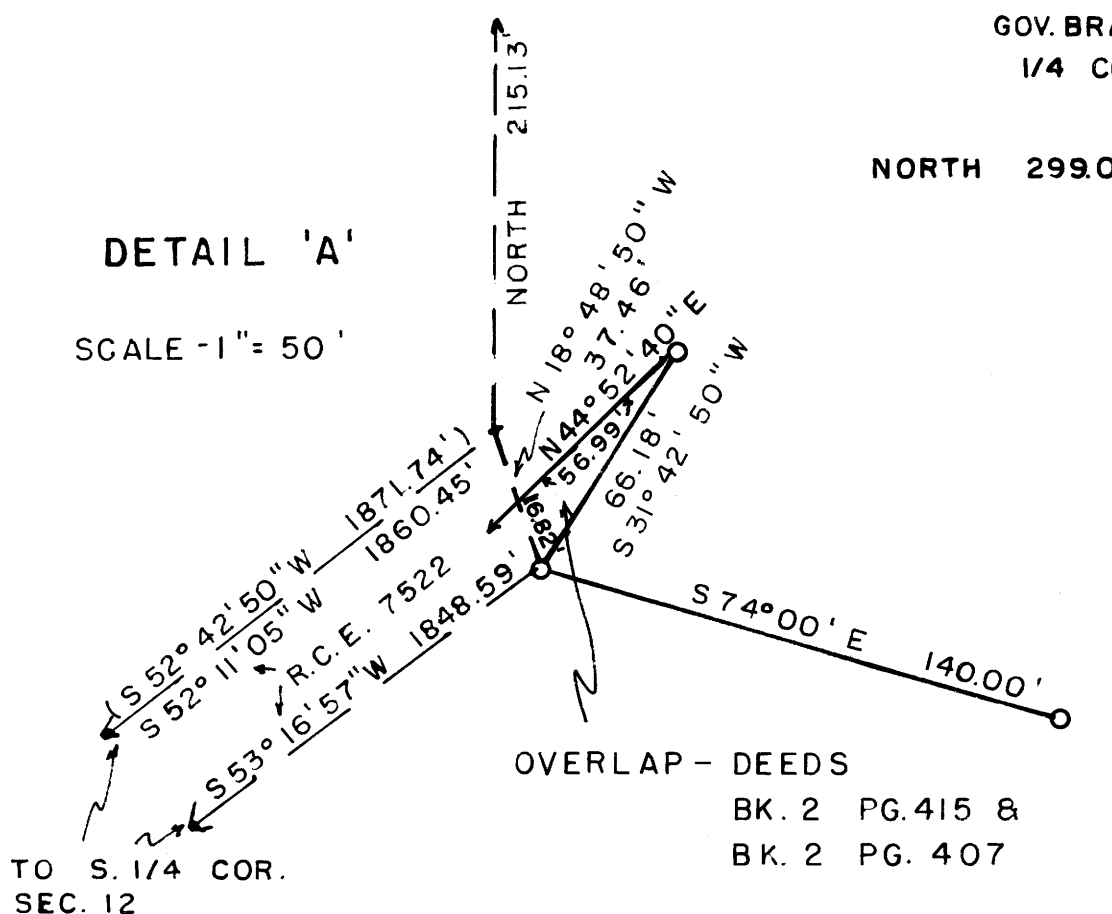
COMMON  
BOUNDARY  
BK. 2 PG. 407

N 69° 00' E 132.50'  
S 55° 15' E 529.00'  
S 18° 23' E 369.60'  
S 10° 14' 23" E 363.62'

DEED SHOWS  
S 18° 23' E  
369.60'

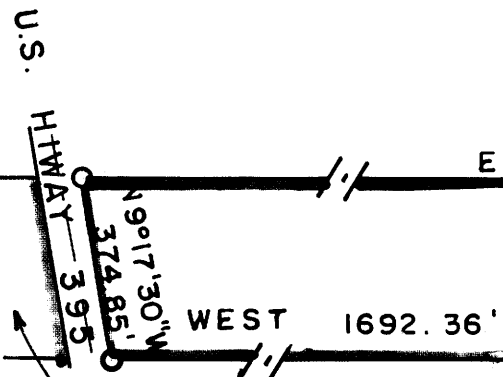
DETAIL 'A'

SCALE - 1" = 50'



LEGEND: SET

O = 1/2" X 24" REBAR TAGGED R.C.E. 7522  
BRASS CAPS SET BY B.L.M. 1941



"SEE SHEET 2 OF 2  
FOR BALANCE  
OF SURVEY"

14 13  
23 24  
BRASS CAP

1152.71'

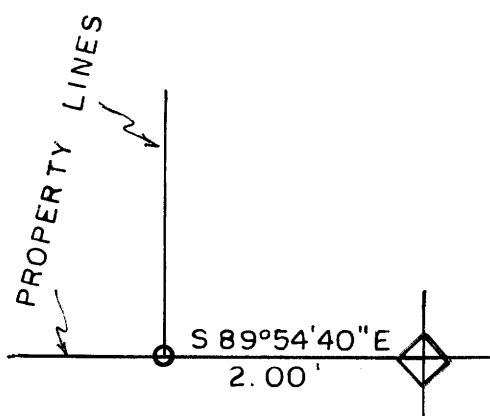
2" PIPE W/BRASS CAP 1' ABOVE GROUND  
STD. BLM MARKINGS

N 89° 54' 40" W

4074.64'

1/4 COR. BRASS CAP  
1" PIPE W/BRASS CAP 1' ABOVE GROUND,  
W.C. 13/24 T. 9 N., R. 22 E 44.88'

ENLARGEMENT



FENCE COR  
N 89° 35' 50" E 2.00'  
1/4 COR. BRASS CAP  
EAST OF FENCE &  
PROPERTY LINE  
1" PIPE W/BRASS CAP IN  
ROCK MON. 1' HIGH, MKD.  
13 + 18 T. 9 N., R. 22 E & R 23 E.

T. 9 N., R. 22 E., M.D.B&M.

3" PIPE W/BRASS CAP  
1' ABOVE GROUND STD.  
BLM MARKINGS.

SEC. COR. BRASS CAP  
EAST OF FENCE  
& PROPERTY CORNER.

13 18  
24 19

R/S - Vol. 1, Pg 23