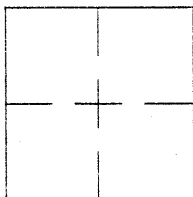


CORNER RECORD

Document Number CR 6655City of UnincorporatedCounty of ALAMEDA, CaliforniaBrief Legal Description WELL MONUMENT LOCATED WITHIN THE INTERSECTION OF ~~CARRIAGE WAY AND 168TH AVE~~ Cambrian Dr.

CORNER RECORD

Government Corner ☐ Control ☒
 Meander ☐ Property ☐
 Rancho ☐ Other ☐
 Date of Survey 9/15/2014

COORDINATES
(Optional)

N. 2004226±
 E. 6096298±
 Zone _____ Datum _____
 Elev. _____

Corner — Left as found ☒ Found and tagged ☐ Established ☐ Reestablished ☐ Rebuilt ☐

Identification and type of corner found: Evidence used to identify or procedure used to establish or reestablish the corner:
FOUND NAIL AND TAG IN WELL MONUMENT.

THIS POINT WAS REFERENCED PRIOR TO A CONSTRUCTION PROJECT IN THE VICINITY.

A description of the physical condition of the monument as found and as set or reset: _____
FOUND AND SET POINTS AS SHOWN ON PAGE 2.

THESE TIES ARE FOR THE PURPOSE OF PERPETUATING THE FOUND MONUMENTATION.

NO CLAIM IS MADE AS TO THE RELATIONSHIP OF THE POINTS OR LINES SHOWN HEREON
 TO TRUE BOUNDARY LOCATIONS.

SURVEYOR'S STATEMENT

This Corner Record was prepared by me or under my direction in conformance with
 the Land Surveyors' Act on SEPTEMBER 16, 2014.

Signed Alan E. McKean L.S. Number R.C.E. 19965
 Alan E. McKean Exp. 9/30/15



COUNTY SURVEYOR'S STATEMENT

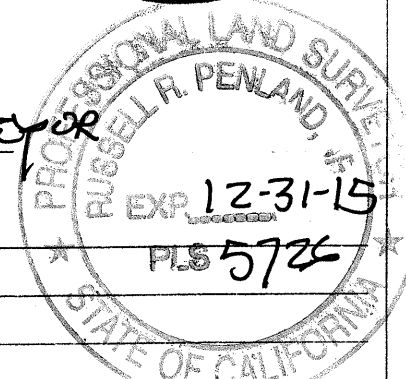
This Corner Record was received 9.23.2014 and examined

and filed 12-28-2015

Signed [Signature] Title County Surveyor

County Surveyor's Comment _____

SPEC. 2255





SCALE: 1"=30'

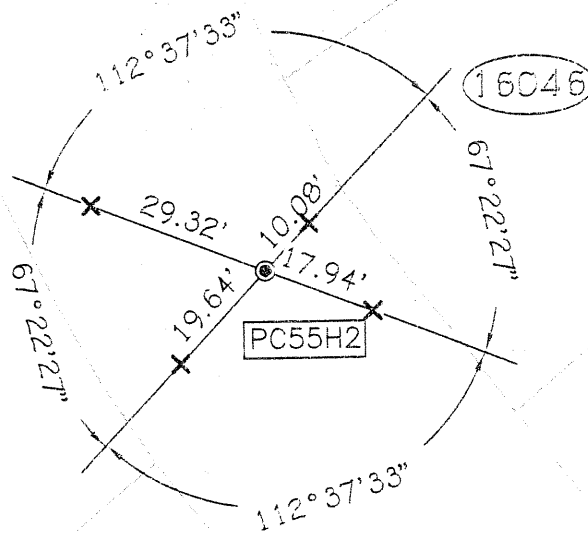
LEGEND

● FOUND NAIL AND TAG IN MONUMENT WELL

✕ SET CUT CROSS IN CURB

AA#### ALAMEDA COUNTY MONUMENT ID

STREET ADDRESS



CAMBRIAN DR