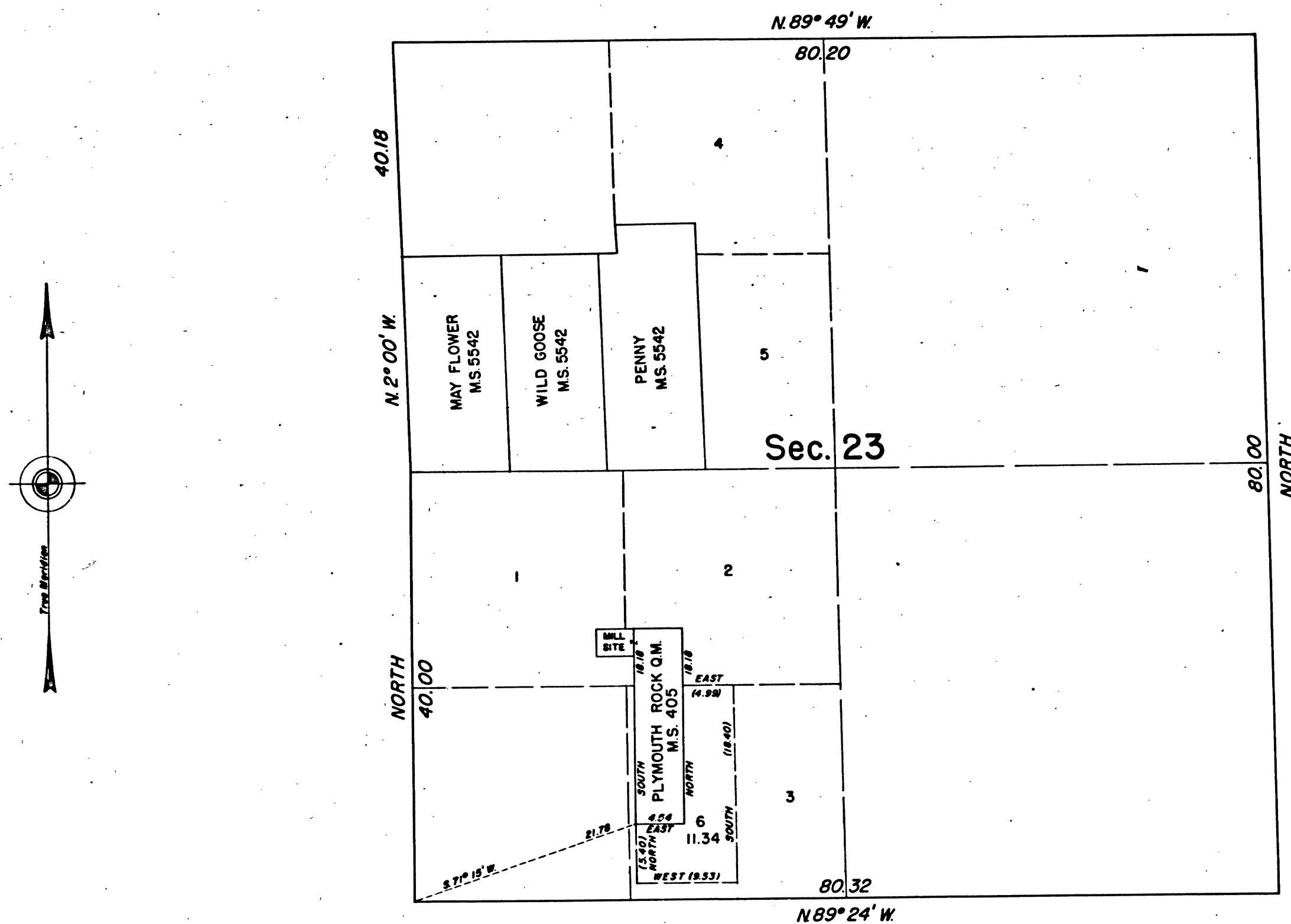


TOWNSHIP 3 NORTH, RANGE 10 EAST, OF THE MOUNT DIABLO MERIDIAN, CALIFORNIA.
SUPPLEMENTAL PLAT OF SECTION 23



This supplemental plat of Section 23, Township 3 North, Range 10 East, of the Mount Diablo Meridian, California, showing amended lottings, created for the purpose of obtaining the area and legal description of that portion of the SE 1/4 SW 1/4 remaining after segregation of Lot 3 and Mineral Survey No. 405, is based upon the plats approved February 24, 1871, February 4, 1880, August 22, 1890, April 22, 1924, and mineral plat approved October 31, 1872.

UNITED STATES DEPARTMENT OF THE INTERIOR
BUREAU OF LAND MANAGEMENT
Washington, D.C. February 11, 1963

This plat, showing amended lottings, is based upon the official records, and having been correctly prepared in accordance with the regulations, is hereby accepted.

For the Director

E. J. Cunningham

Chief, Division of Engineering



T. 3 N., R. 10 E. M.D.M.

BLM 80