

NOTES AND LEGEND

All distances and dimensions are shown in feet and decimals thereof.
The blue border line indicates the boundary of land included within this map.

- Indicates found 3/4" Iron Pipe in Monument Box
- Indicates 3/4" Iron Pipe unless otherwise noted
- Indicates found 6"x6" conc. Highway Monument
- Indicates set 1" Iron Pipe

BASIS OF BEARINGS

The bearing of N. 08° 05' 30" W. along the centerline of Heath Street as shown upon Tract No. 2880, Milpitas Manor, Unit No. 8 recorded in Book 123 of Maps of Pages 42 and 43, Santa Clara County Records, was taken as the basis of bearings for this map.

PARCEL MAP

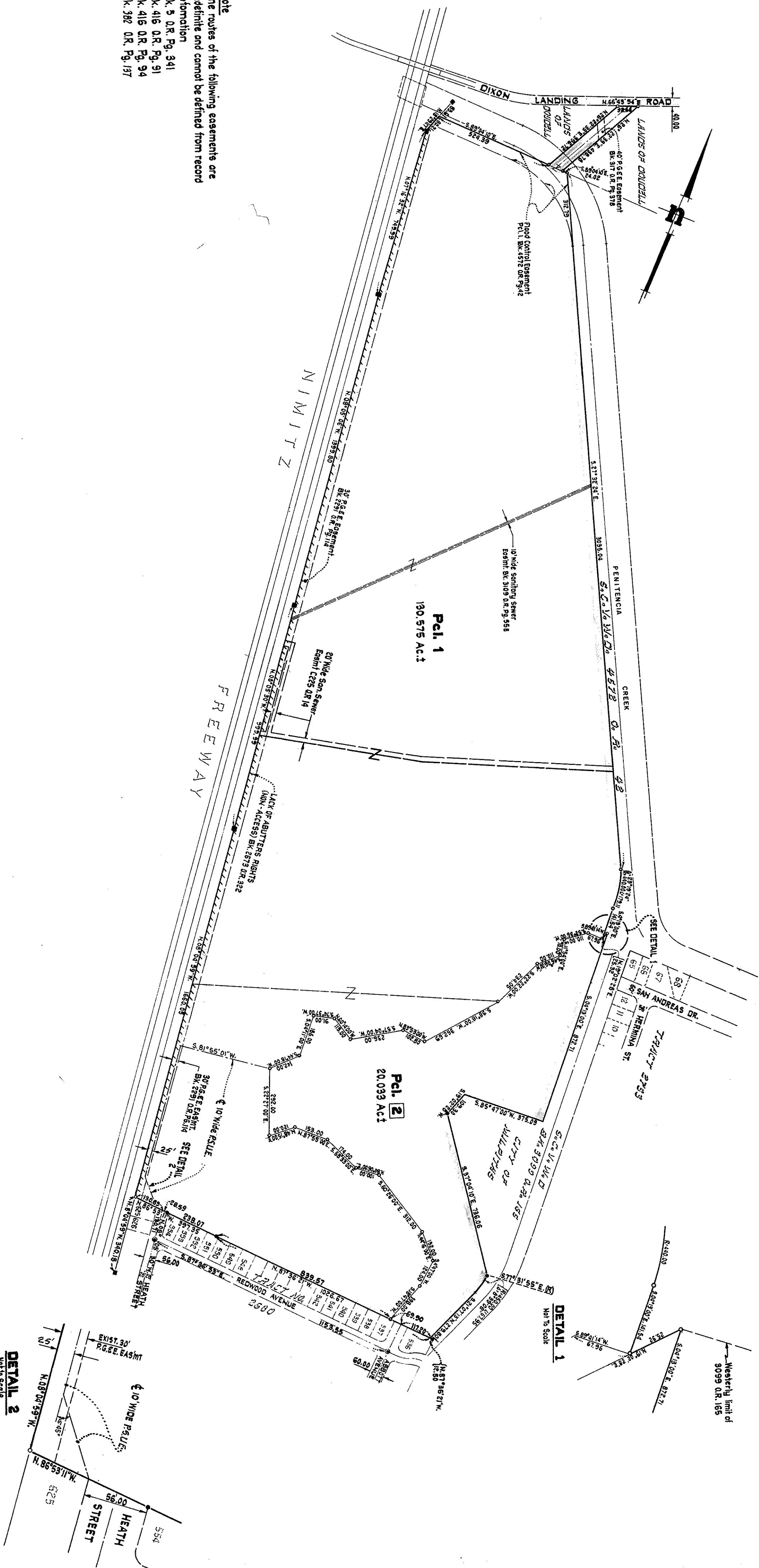
CONSISTING OF TWO SHEETS

BEING A PORTION OF THE RANCHO RINCON DE LOS ESTEROS

CITY OF MILPITAS

SANTA CLARA COUNTY, CALIFORNIA

SCALE: 1" = 300' — MAY 1977



Note
The routes of the following easements are indefinite and cannot be defined from record information
Bk. 3 O.R. Pg. 341
Bk. 416 O.R. Pg. 91
Bk. 416 O.R. Pg. 94
Bk. 382 O.R. Pg. 137

FEB. 1, 1978 File No. 5917643 Book 412 of Maps PAGES 12 & 13

GEORGE S. NOLTE AND ASSOCIATES
CIVIL ENGINEERS, PLANNERS, SURVEYORS

SHEET 2 OF 2 SHEETS