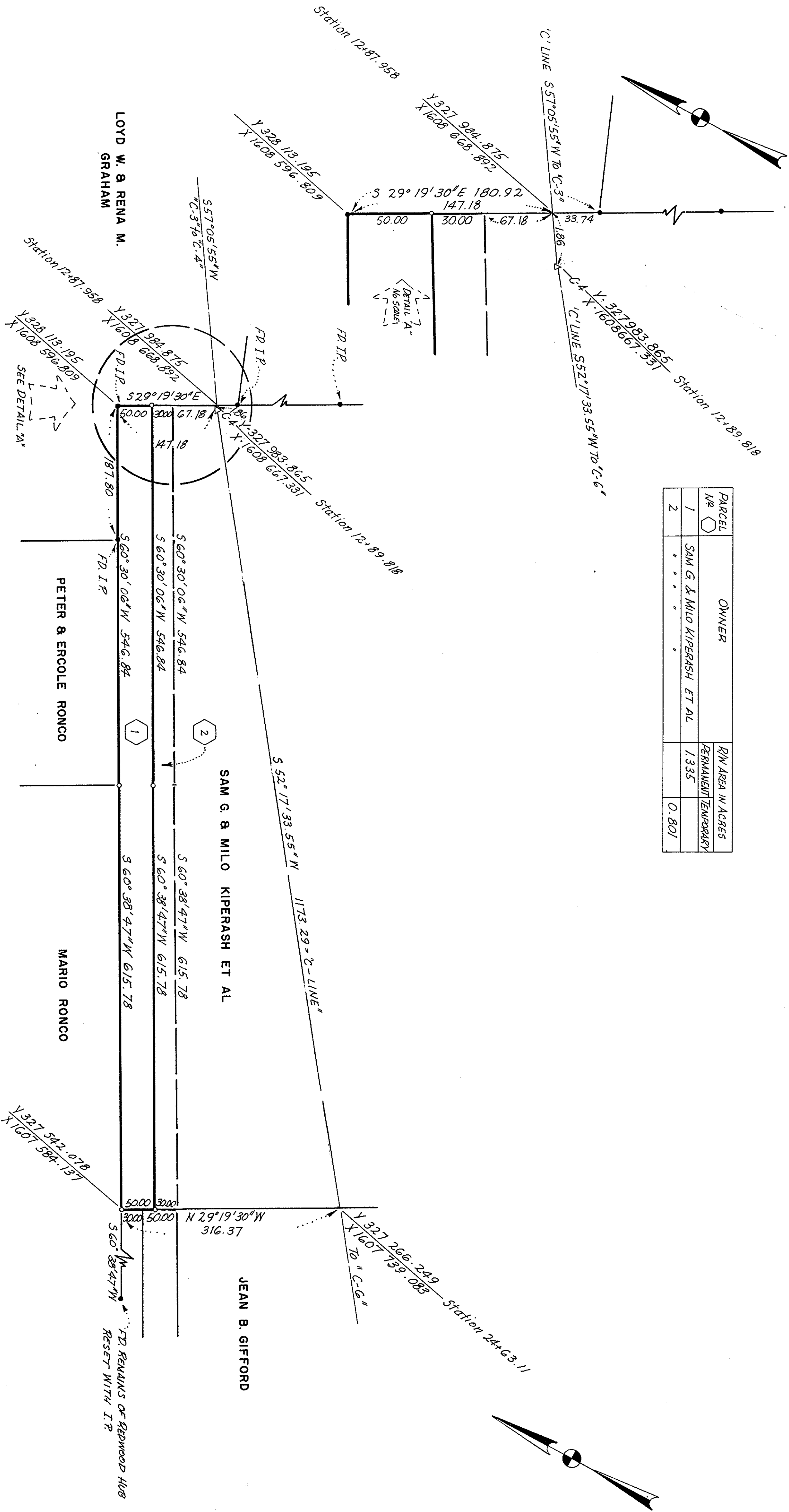


PARCEL NO.	OWNER	R/W AREA IN ACRES PERMANENT TEMPORARY
1	SAM G. & MILO KIPERASH ET AL	1.335
2	" " " "	0.801



RECORDER'S CERTIFICATE

File No. 2526428
Filed for record this 29th day of November
1963, at 8:14 in Book 170 of Maps
at pages 13-14 of the request of S.G.C.E.C.
W.C.D.

By Deputy Paul R. Teich
County Recorder

SURVEYOR'S CERTIFICATE

This map correctly represents a survey made by me and/or under my direction in conformance with the requirements of Chapter 15 of Division 3 of the Business and Professions Code at the request of SANTA CLARA COUNTY FLOOD CONTROL AND WATER CONSERVATION DISTRICT.

in August, 1963.
Robert S. McDermott
L.S. No. 2734

CO. SURVEYOR'S CERTIFICATE

This map has been examined for conformance with the requirements of Chapter 15 of Division 3 of the Business and Professions Code at the request of JAMES T. DOTY day of November, 1963.

By Deputy James T. Doty
County Surveyor

NON-SUBDIVISION CERTIFICATE

This is to certify that this Record of Survey does not constitute a subdivision of land as defined under Section 11535 of the Business and Professions Code of the State of California nor under any ordinance adopted pursuant to Sections 11506, 11526 or 11540.1 of said Business and Professions Code. It is filed on behalf of the SANTA CLARA COUNTY FLOOD CONTROL AND WATER CONSERVATION DISTRICT for the express purpose of describing existing or prospective rights of ways for projects of said District.

Robert S. McDermott
L.S. No. 2734

BASIS OF BEARINGS

The basis of bearings, grid co-ordinates and distances shown upon this map is the California State Co-ordinate System, Zone 3 as shown upon that certain Record of Survey filed for record November 19th, 1963, in Book 169 of Maps, pages 41 to 44 inclusive.

To obtain equivalent ground level distances from the grid distances shown hereon, multiply by the factor 1.0000596.

LEGEND

- Indicates monuments found.
- Indicates 3/4" iron pipe found unless otherwise noted.
- ▲ Indicates principal control point found.
- Indicates 3/4" iron pipe set (To be replaced after construction with a 6" diameter concrete monument and bronze plate).

RECORD OF SURVEY

(CENTRAL PIPELINE)
OF A PORTION OF THE LANDS OF
KIPERASH, GIFFORD, DINSMORE,
MOORE AND SANTO

BEING A PORTION OF PUEBLO TRACT NO. 1
SAN JOSE CITY LANDS

SANTA CLARA COUNTY, CALIFORNIA
CALIFORNIA PACIFIC ENGINEERS
1963
SCALE: 1" = 100'