

BK 29 Pg 52

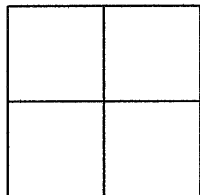
CORNER RECORD

Document Number CR 3271

City of OAKLAND

County of ALAMEDA, California

Brief Legal Description WELL MONUMENT LOCATED WITHIN THE INTERSECTION OF
MALCOLM AVENUE AND MAGGIORA DRIVE. (24NE3)



CORNER RECORD

Government Corner ☐ Control ☒
Meander ☐ Property ☐
Rancho ☐ Other ☐
Date of Survey 11/28/2007

COORDINATES
(Optional)

N. _____
E. _____
Zone _____ Datum _____
Elev. _____

Corner — Left as found ☒ Found and tagged ☐ Established ☐ Reestablished ☐ Rebuilt ☐

Identification and type of corner found: Evidence used to identify or procedure used to establish or reestablish the corner:
FOUND BRASS PIN IN WELL MONUMENT WITHIN THE INTERSECTION OF MALCOLM AVENUE
AND MAGGIORA DRIVE. AS SHOWN ON OAKLAND MONUMENT MAP, PAGE 69.

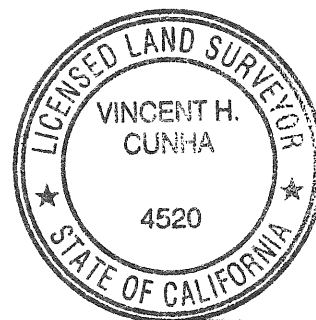
THIS POINT WAS REFERENCED PRIOR TO A CONSTRUCTION
PROJECT IN THE VICINITY

A description of the physical condition of the monument as found and as set or reset:
FOUND AND SET POINTS AS SHOWN ON PAGE 2.

SURVEYOR'S STATEMENT

This Corner Record was prepared by me or under my direction in conformance with
the Land Surveyors' Act on DECEMBER 4, 2007.

Signed Vincent H. Cunha L.S. Number L5 4520
VINCENT H. CUNHA EXP. 9-30-08



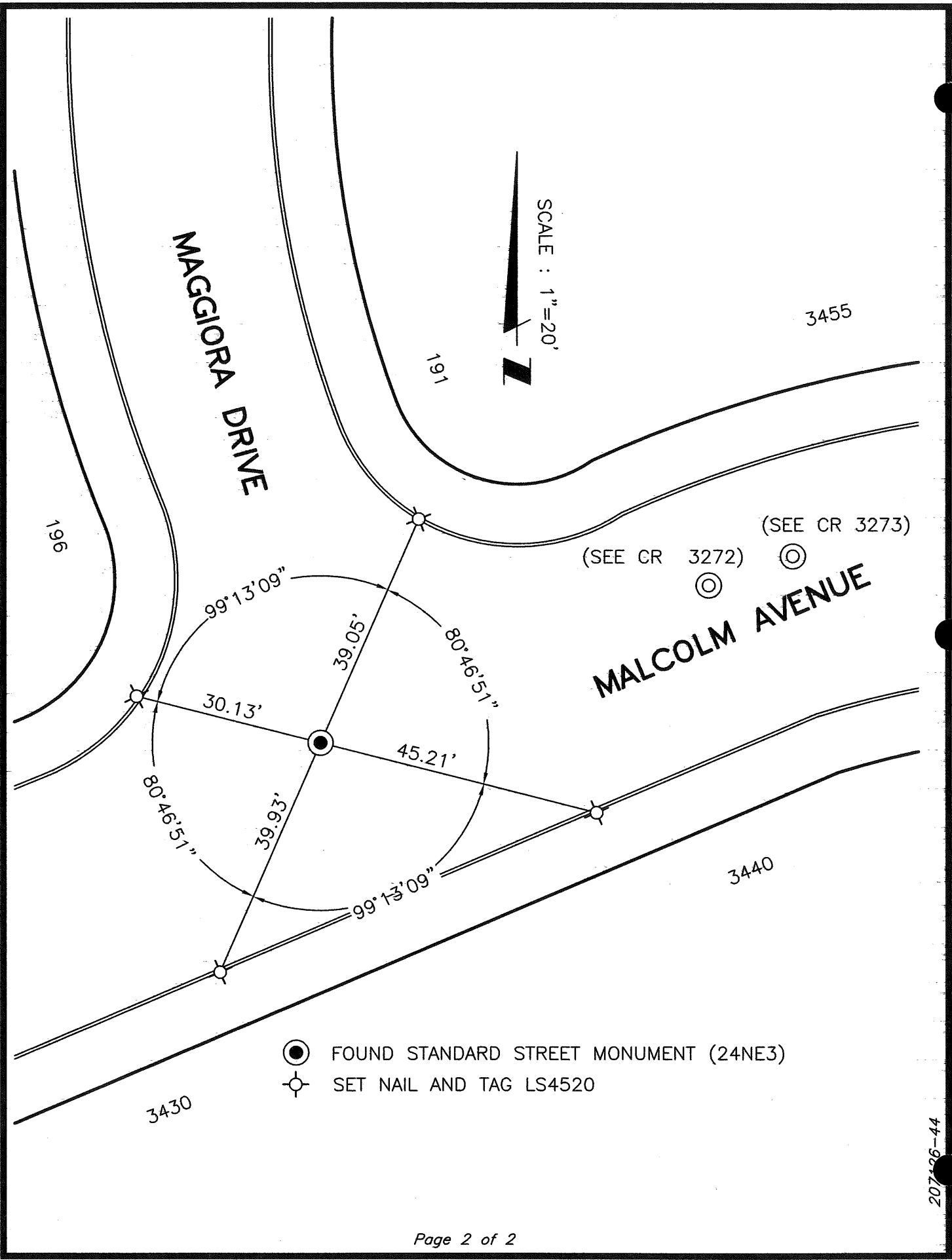
COUNTY SURVEYOR'S STATEMENT

This Corner Record was received 3-11-2008 and examined
and filed 5-11-2008.

Signed [Signature] Title COUNTY SURVEYOR



County Surveyor's Comment _____



- FOUND STANDARD STREET MONUMENT (24NE3)
- ⊙ SET NAIL AND TAG LS4520

207126-44