

# CORNER RECORD

Agency Index

BK 100 PG 96

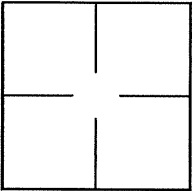
Document Number

CR 10457

City of OAKLAND

County of ALAMEDA, California

Brief Legal Description INTERNATIONAL BLVD. AND 41ST AVE.

**CORNER TYPE**

Government Corner ☐ Control  
Meander ☐ Property  
Rancho ☐ Other

Date of Survey MAY 19, 2017

**COORDINATES (Optional)**

N. \_\_\_\_\_ E. \_\_\_\_\_

☒ Elevation \_\_\_\_\_Units Metric ☐ U.S. Survey Foot ☒☐ Horizontal Datum \_\_\_\_\_

Zone \_\_\_\_\_ Epoch Date \_\_\_\_\_

Vertical Datum \_\_\_\_\_

☐ Complies with Public Resources Code §§8801-8819☐ Complies with Public Resources Code §§8890-8902PLS Act Ref: ☐ 8765(d)☒ 8771☐ 8773☐ Other:Corner/ Monument: ☒ Left as found☐ Established☐ Rebuilt☒ Pre-Construction☐ Found and tagged☐ Reestablished☐ Referenced☐ Post-Construction

Narrative of corner identified and monument as found, set, reset, replaced, or removed:

☒ See sheet #2 for description (s):

FOUND 1/4" IRON PIN IN CONCRETE, IN MONUMENT WELL, LOCATED AT INTERSECTION OF 41ST AVENUE AND INTERNATIONAL BOULEVARD.

SET NAIL AND TAG, STAMPED LS 8593 AS REFERENCE POINTS TO BE USED TO RESET MONUMENT SHOULD IT BE DISTURBED DURING CONSTRUCTION ACTIVITIES.

SEE SHEET 2 FOR GRAPHIC

**SURVEYOR'S STATEMENT**

This Corner Record was prepared by me or under my direction in conformance with the Professional Land Surveyors' Act on JULY 7, 2017

Signed \_\_\_\_\_ (P.L.S.) or R.C.E. No. 8593

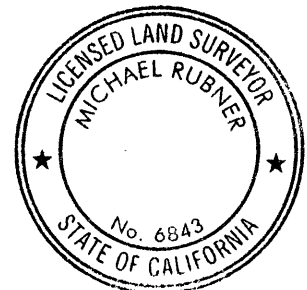
**COUNTY SURVEYOR'S STATEMENT**

This Corner Record was received 26 JULY, 2017

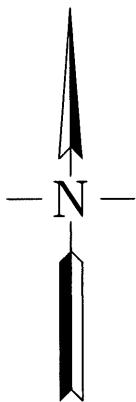
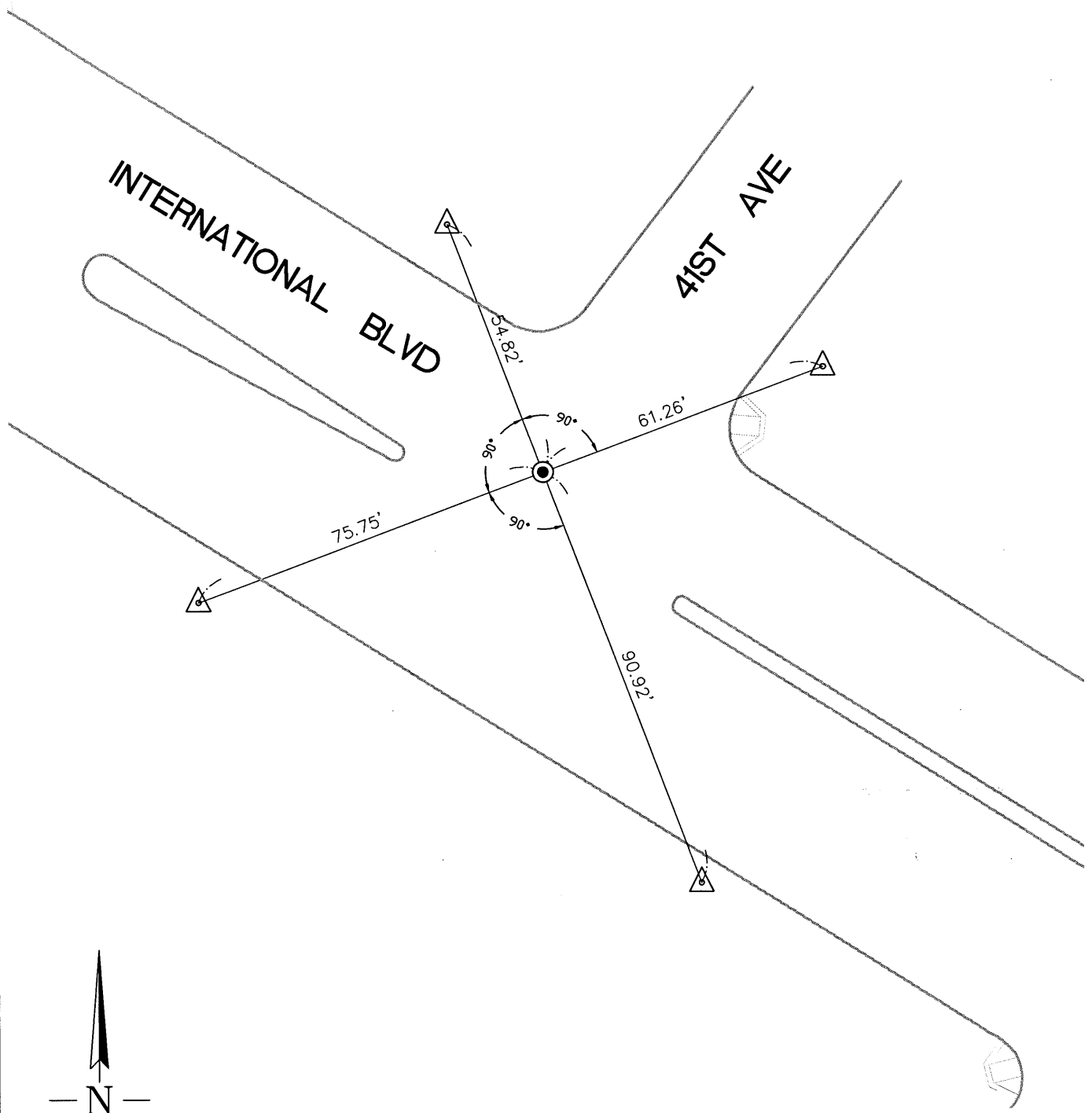
and examined and filed 1 SEPTEMBER, 2017

Signed Michael Rubner P.L.S. or R.C.E. No. 6843

Title COUNTY SURVEYOR



County Surveyor's Comment \_\_\_\_\_



LEGEND



FOUND 1/4" IRON PIN IN MONUMENT WELL



SET NAIL & TAG LS 8593

NOT TO SCALE