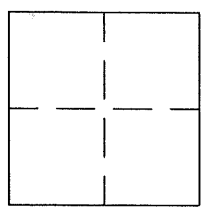


BK 24 Pg 63 prior 1747

CORNER RECORD

APN No. 80 - 78, 80. - - - - - (Optional) Document Number CR-2798
Unincorporated County of ALAMEDA, California
Brief Legal Description Monument at the intersection of 167th Avenue and Los Banos Street.



CORNER TYPE

Government Corner ☐ Control ☐
Meander ☐ Property ☐
Rancho ☐ Other ☒
Date of Survey June, 2006

COORDINATES
(Optional)

N. _____
E. _____
Zone _____ Datum _____
Elev. _____

Corner - Left as found ☐ Found and tagged ☐ Established ☐ Reestablished ☒ Rebuilt ☐

In compliance with Section 8771 of the Professional Land Surveyors' Act, this corner record is being filed to ESTABLISH _____ / REESTABLISH X the position of an existing monument PRIOR _____ / SUBSEQUENT X to street or highway reconstruction. (Use this portion only when applicable.)

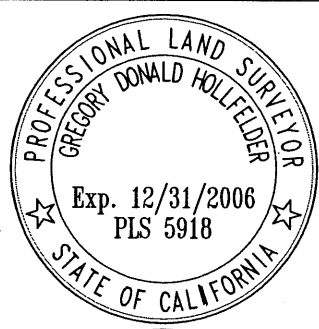
Identification and type of corner found: Evidence used to identify or procedure used to establish or reestablish the corner: The monument described below was set from the information on Corner Record 1747. See drawing on the next page.

A description of the physical condition of the monument as found and as set or reset: A new Alameda County bronze disk with nipple stamped "167-LB 2006" was set to replace the one destroyed. The disk is located in a standard monument well and is at intersection of 167th Avenue and Los Banos Street.

SURVEYOR'S STATEMENT

This Corner Record was prepared by me or under my direction in conformance with the Land Surveyors' Act on September 7, 2006.

Signed Gregory Donald Hollfelder L.S. or R.C.E. Number 5918



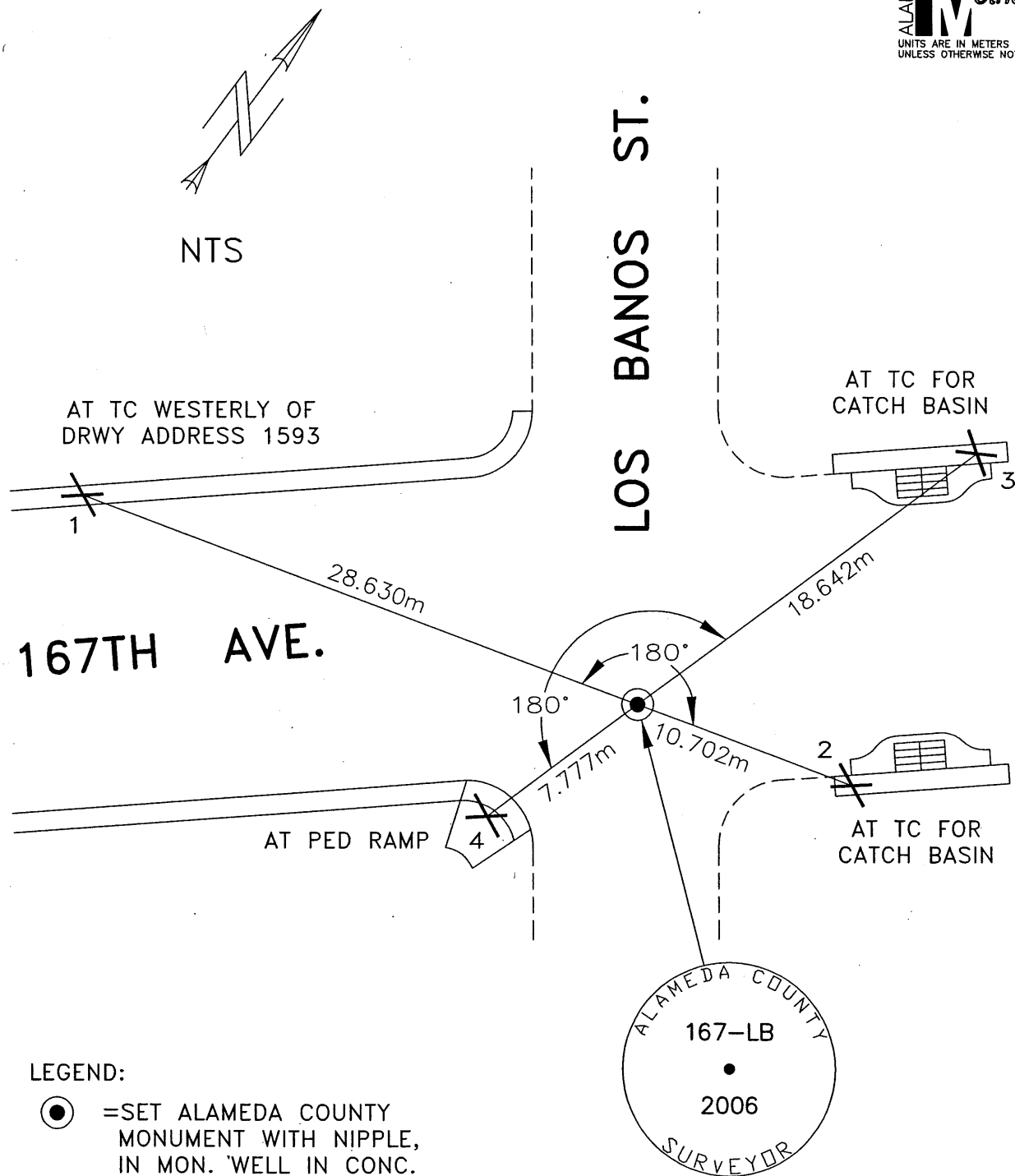
COUNTY SURVEYOR'S STATEMENT

This Corner Record was received 9-5 2006 and examined and filed 9-12 2006.

Signed Russell R. Penland, Jr. Title County Surveyor



County Surveyor's Comment _____



LEGEND:

- = SET ALAMEDA COUNTY MONUMENT WITH NIPPLE, IN MON. WELL IN CONC. POST 0.28m BELOW SURFACE.
- X = FOUND CHISELED "X" ON CONC.
- = AC BERM.
- TC = TOP OF CURB.

REFERENCES: ALAMEDA COUNTY
 MAP AND FIELD NOTES.
 A506-1, SHT. 7.
 PLAN AND PROFILE 6/12/1966.
 AS BUILT 11/30/67.
 LL-508-7.
 CORNER RECORD 1747.