



Chick-fil-A

Chick-fil-A
5200 Buffington Road
Atlanta, Georgia
30349-2998

TriMark
Foodservice Equipment, Supplies and Design
STRATEGIC

CHICK-FIL-A
Cherokee Place
Cartersville, GA

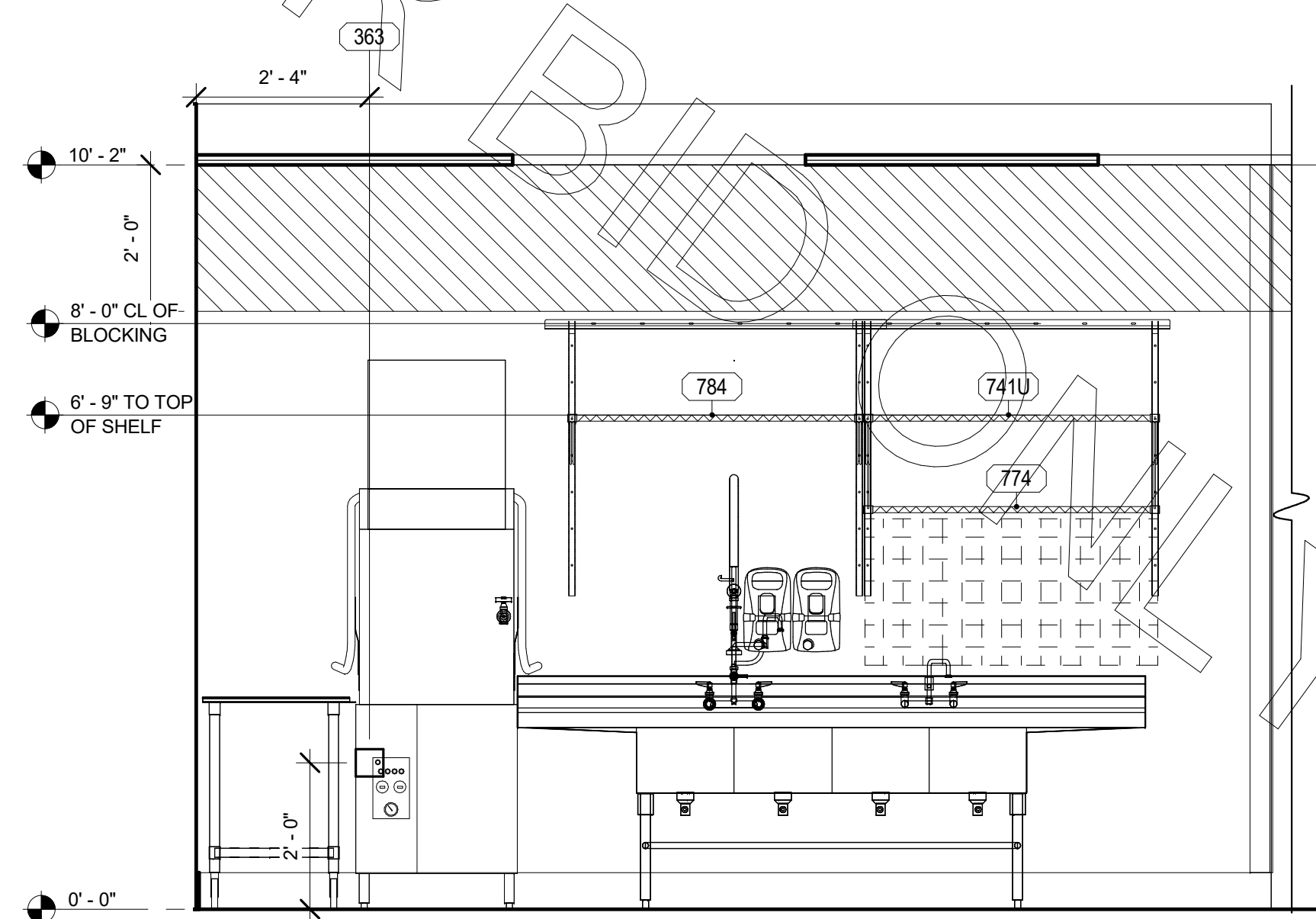
FSR# 00534

REVISION SCHEDULE
NO. DATE DESCRIPTION

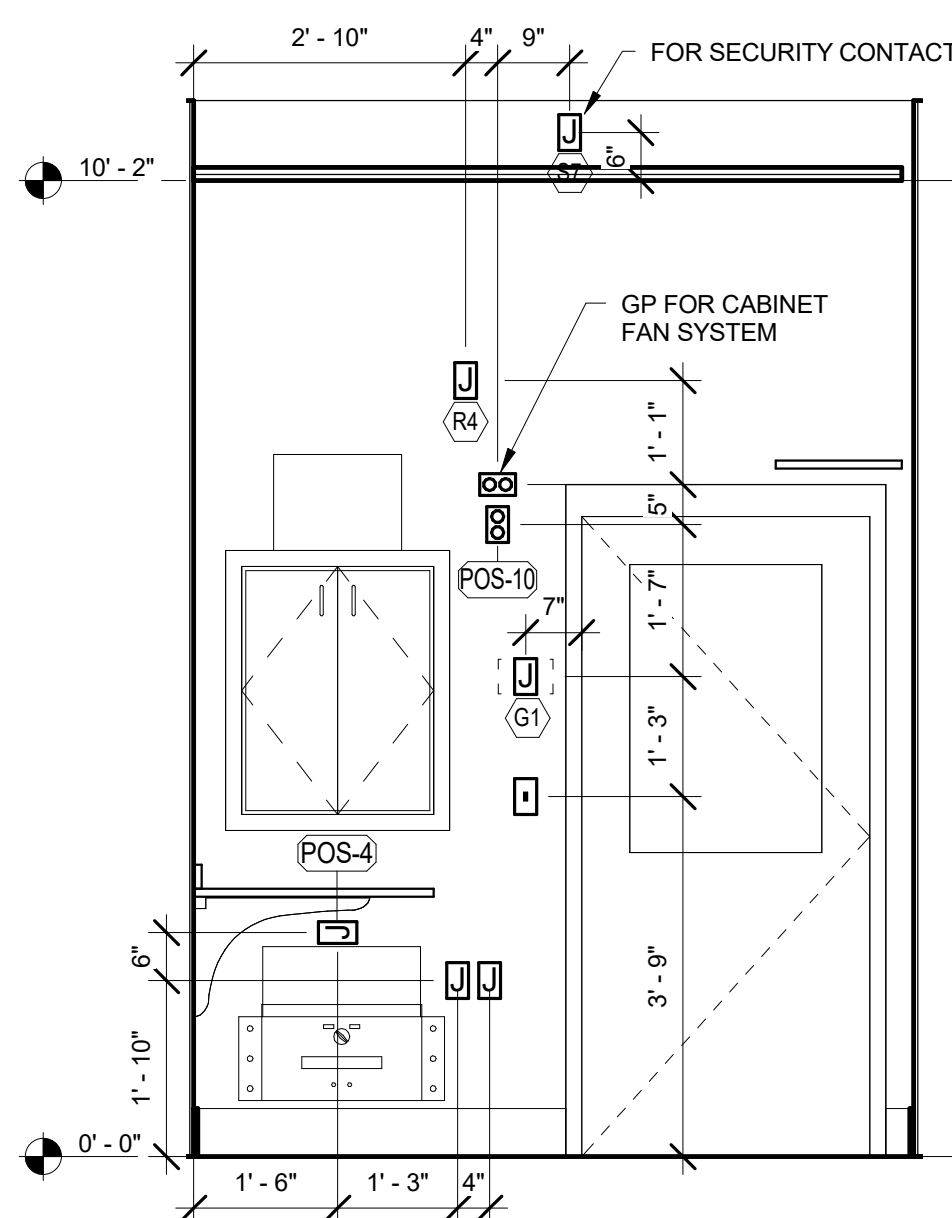
CURRENT TEMPLATE NOVEMBER 2017
UPDATE APPLIED
ARCHITECT'S PROJECT # 00000
PRINTED FOR PERMIT
DATE
DRAWN BY AMS
Information contained on this drawing and in all digital files produced for above named project may not be reproduced in any manner without express written or verbal consent from without project representations.

SHEET
ELECTRICAL ROUGH-IN
ELEVATIONS
SHEET NUMBER

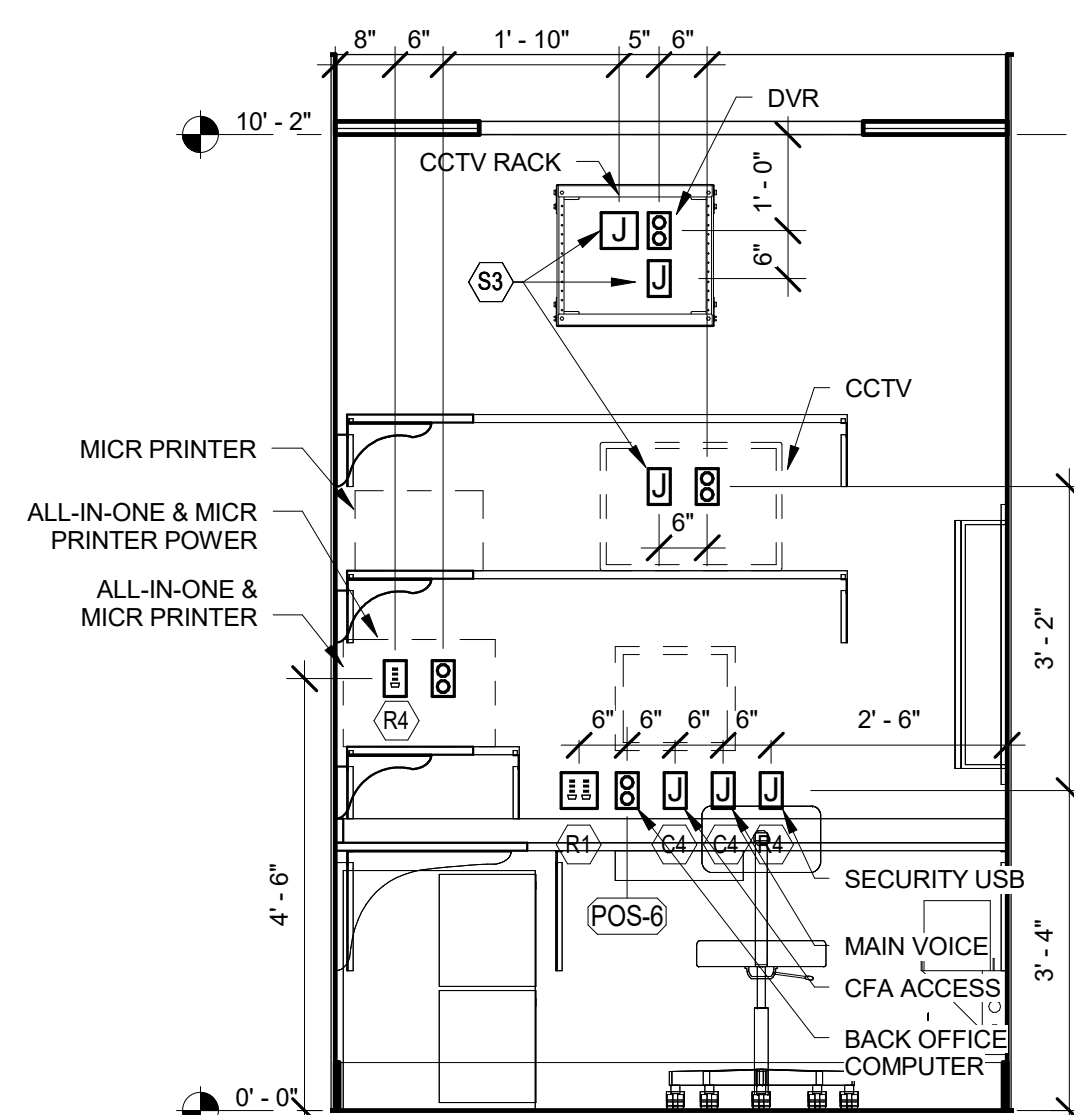
K-304



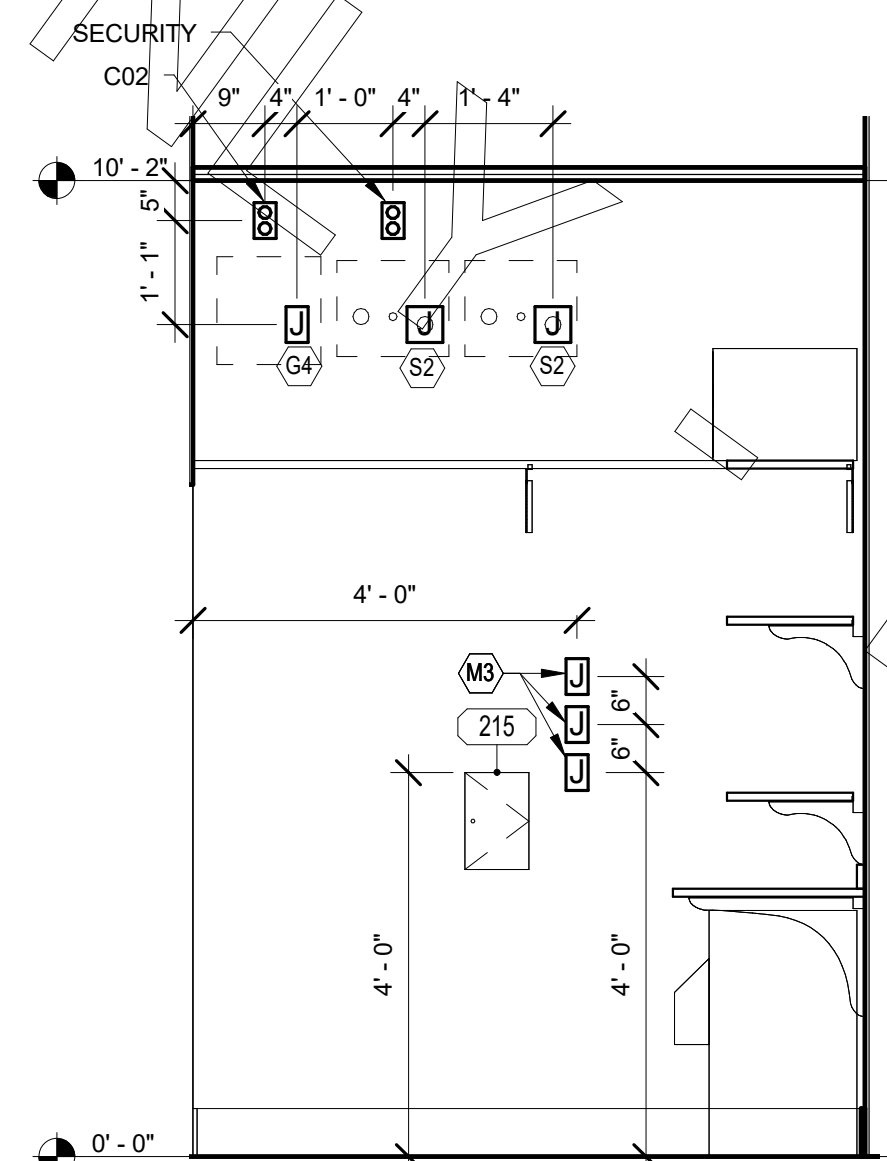
1 KITCHEN
1/2" = 1'-0"



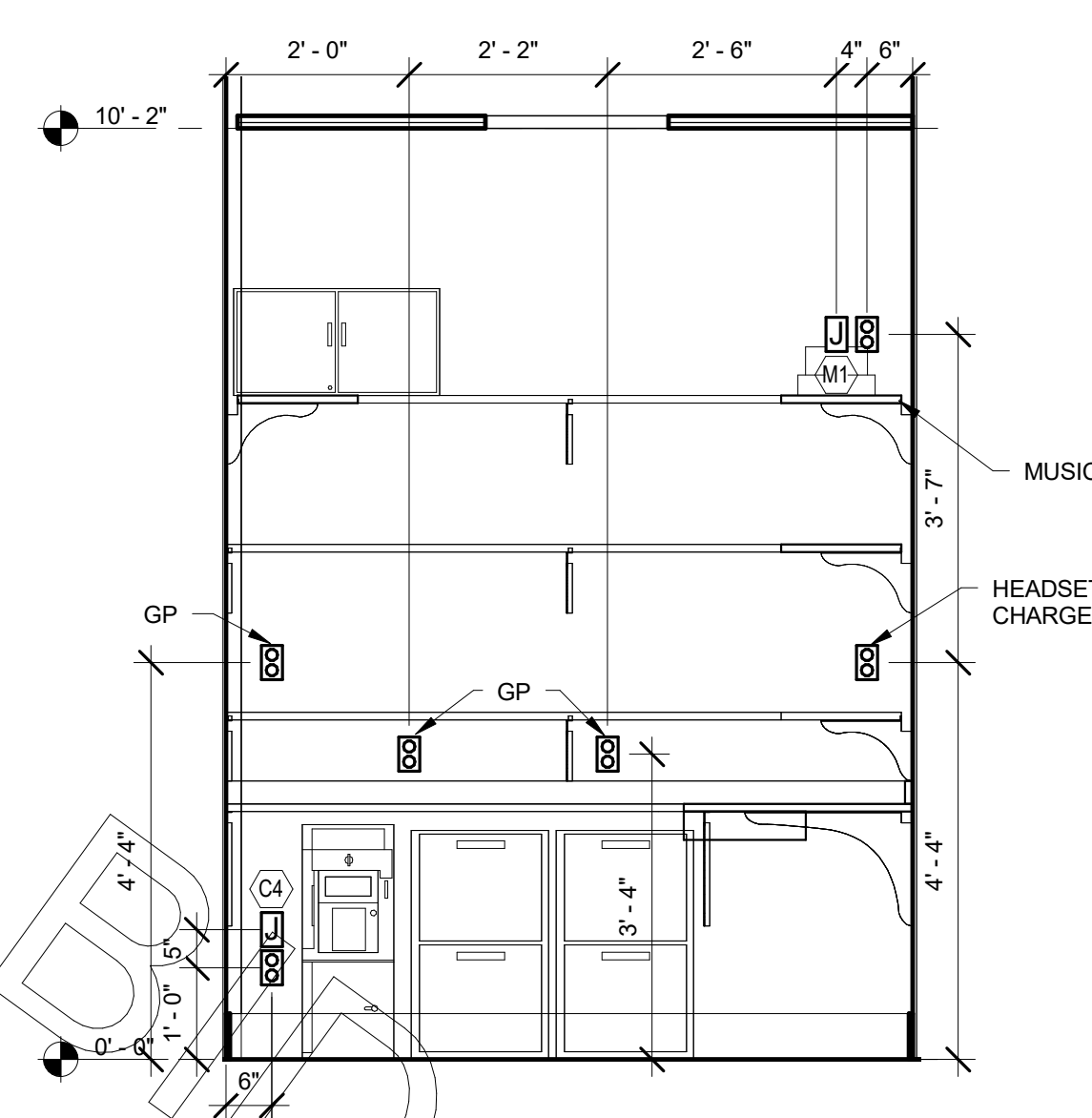
2 OFFICE
1/2" = 1'-0"



3 OFFICE
1/2" = 1'-0"



4 OFFICE
1/2" = 1'-0"



5 OFFICE
1/2" = 1'-0"

ELEVATION LEGEND	
888Aa	EQUIPMENT NUMBER
(R)	INDICATES NOTE ON SHEET E2
J	JUNCTION BOX
□	SIMPLEX RECEPTACLE
□	DOUBLE RECEPTACLE
□	SWITCH
□	PHONE
□	TERMINATION OF PVC CONDUIT FOR RADIANT POS SYSTEM
□	DOUBLE DUPLEX RECEPTACLE
□	SPECIAL RECEPTACLE
□	HUMIDITY SENSOR
□	TEMPERATURE SENSOR
D	SMOKE DETECTOR LED (2 GANG BOX)
SK	SECURITY KEYPAD