

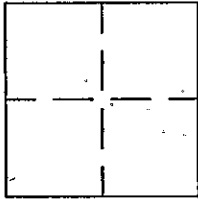
# CORNER RECORD

98-083 7 Cr 061

APN No. \_\_\_\_\_ (Optional)

Document Number CR 1004City of DUBLINCounty of ALAMEDA, California

Brief Legal Description \_\_\_\_\_



## CORNER TYPE

Government Corner ☐ Control ☒  
Meander ☐ Property ☐  
Rancho ☐ Other ☐  
Date of Survey JULY, 1996

## COORDINATES (Optional)

N. \_\_\_\_\_  
E. \_\_\_\_\_  
Zone \_\_\_\_\_ Datum \_\_\_\_\_  
Elev. \_\_\_\_\_

Corner - Left as found ☐ Found and tagged ☐ Established ☐ Reestablished ☒ Rebuilt ☐

Identification and type of corner found: Evidence used to identify or procedure used to establish or reestablish the corner:  
EXISTING MONUMENT WAS GONE.

USING EXISTING MONUMENTS FOUND, THE INTERSECTION OF THE STREETS WAS REESTABLISHED BY BEARING - BEARING PROJECTION.

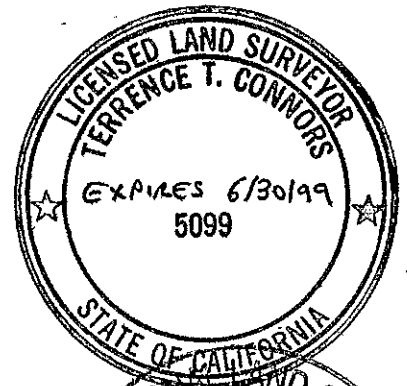
A description of the physical condition of the monument as found and as set or reset: \_\_\_\_\_

MONUMENT HAD BEEN REMOVED BY CONSTRUCTION, REPLACED WITH STANDARD CITY MONUMENT STAMPED L.S. 5099

## SURVEYOR'S STATEMENT

This Corner Record was prepared by me or under my direction in conformance with  
the Land Surveyors' Act on FEBRUARY 2, 19 98.

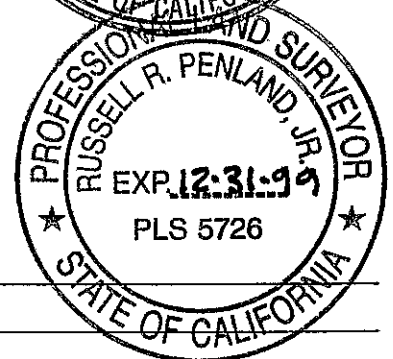
Signed [Signature] L.S. or R.C.E. Number L.S. 5099



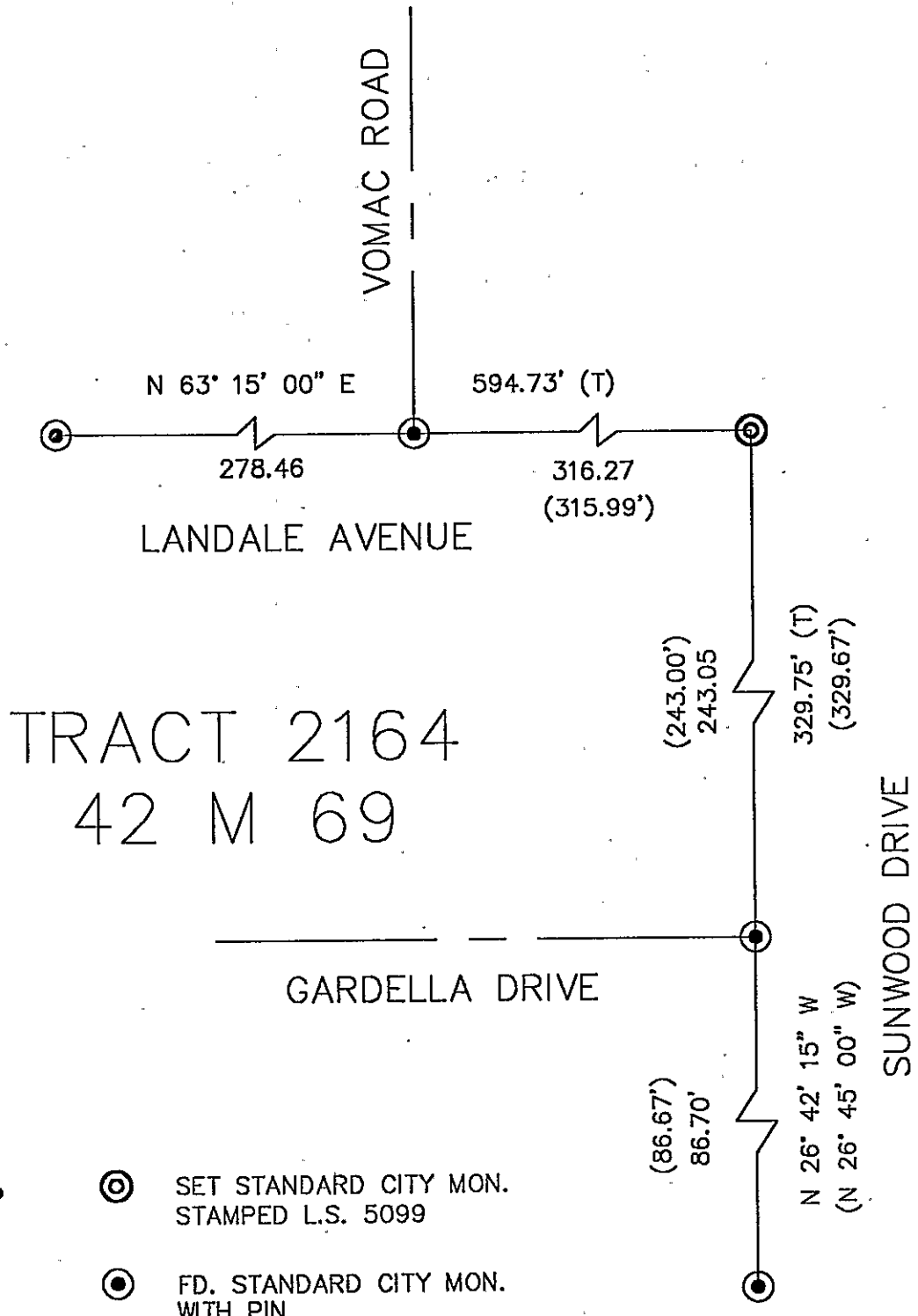
## COUNTY SURVEYOR'S STATEMENT

This Corner Record was received 2-24-19-98 and examined  
and filed 7-16-19-98.

Signed [Signature] Title Deputy County Surveyor



County Surveyor's Comment \_\_\_\_\_



**N.T.S.**