

CORNER RECORD

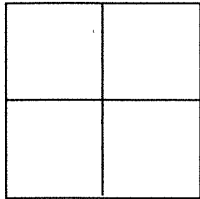
Agency Index BK 104 PG 38
Document Number CR 10684

City of BERKELEY County of ALAMEDA, California

Brief Legal Description CITY OF BEREKELEY MONUMENT B3840, LOCATED AT SAN PABLO AVE. & ASHBY AVE
NORTHEAST CORNER. (CALTRANS MONUMENT #336)

CORNER TYPE

COORDINATES (Optional)



Government Corner ☐ Control ☒
Meander ☐ Property ☐
Rancho ☐ Other ☐

Date of Survey 8/8/17

N. _____ E. _____

Elevation _____

Units Metric ☐ U.S. Survey Foot ☐

Horizontal Datum _____

Zone _____ Epoch Date _____

Vertical Datum _____

☐ Complies with Public Resources Code §§8801-8819

☐ Complies with Public Resources Code §§8801-8902

PLS Act Ref.:

☐ 8765(d)

☒ 8771

☐ 8773

☐ Other:

Corner/
Monument:

☒ Left as found

☐ Established

☐ Rebuilt

☒ Pre-Construction

☐ Found and tagged

☐ Reestablished

☐ Referenced

☐ Post-Construction

Narrative of corner identified and monument as found, set, reset, replaced, or removed.

☐ See sheet #2 for description(s)

SURVEYOR'S STATEMENT

This Corner Record was prepared by me or under my direction in conformance with

the Professional Land Surveyor's Act on AUGUST 14, 2017

Signed  P.L.S. or R.C.E. No. 8178



COUNTY SURVEYOR'S STATEMENT

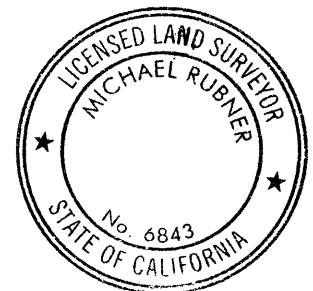
This Corner Record was received 10 OCTOBER 2017

and examined and filed 18 JANUARY 2018

Signed  P.L.S. or R.C.E. No. 6843

Title COUNTY SURVEYOR

County Surveyor's Comment



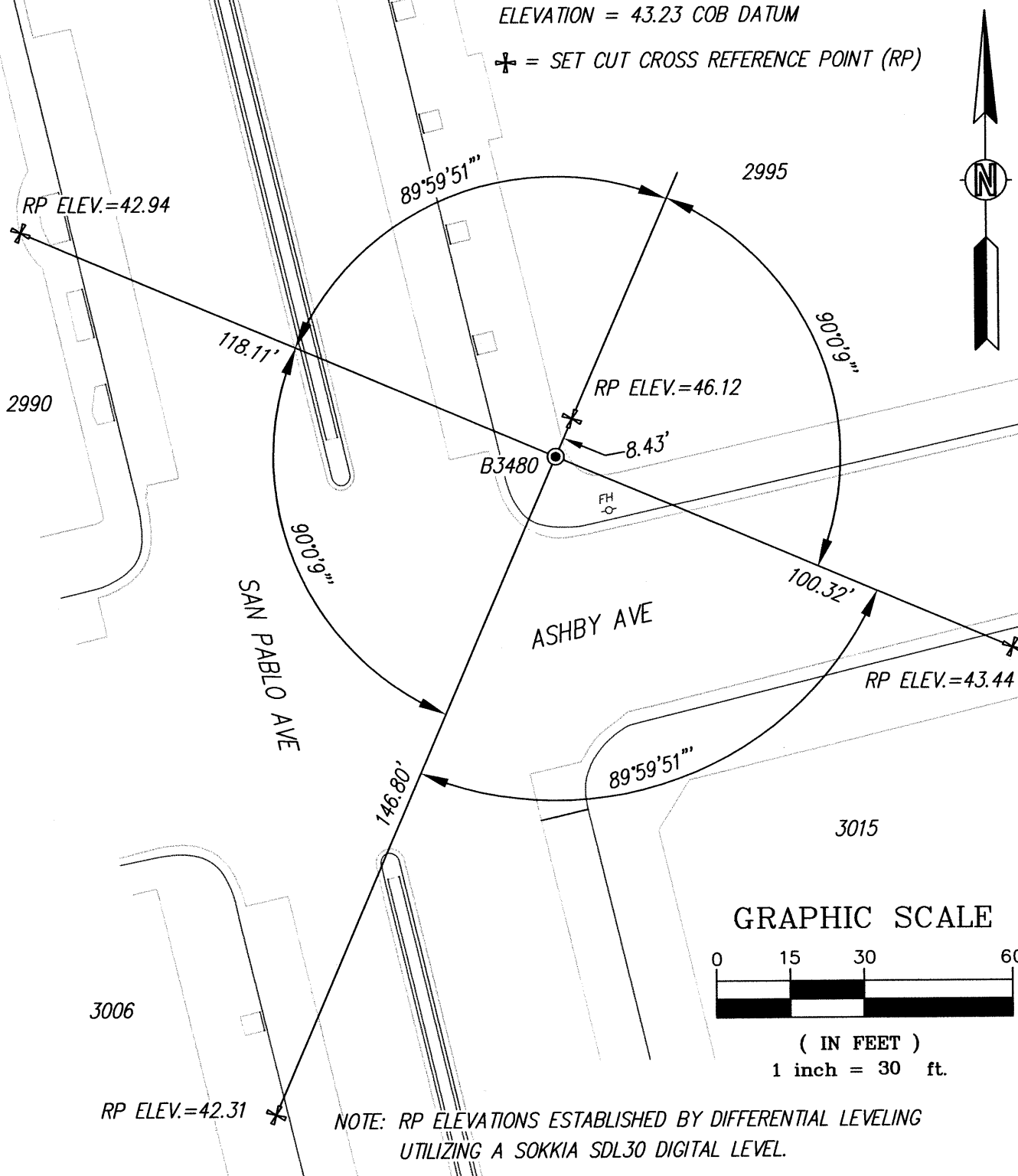
KSR JOB# 19653-17-04

LEGEND

● = FOUND CITY MONUMENT B3480; 1" COPPER DISC
STATE MONUMENT, WITH PUNCH & STAMPED "CALTRANS",
SET FLUSH IN THE EAST SIDEWALK.

ELEVATION = 43.23 COB DATUM

✚ = SET CUT CROSS REFERENCE POINT (RP)



NOTE: RP ELEVATIONS ESTABLISHED BY DIFFERENTIAL LEVELING
UTILIZING A SOKKIA SDL30 DIGITAL LEVEL.