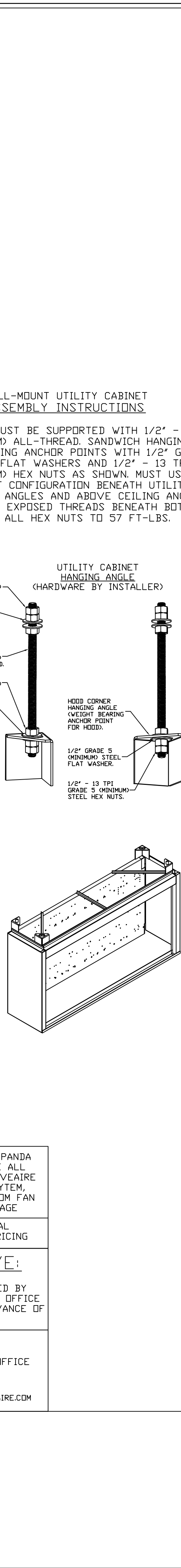
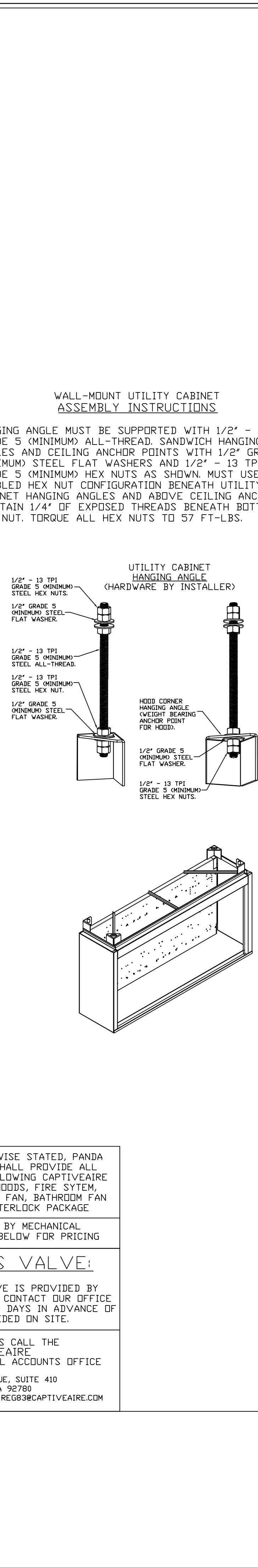
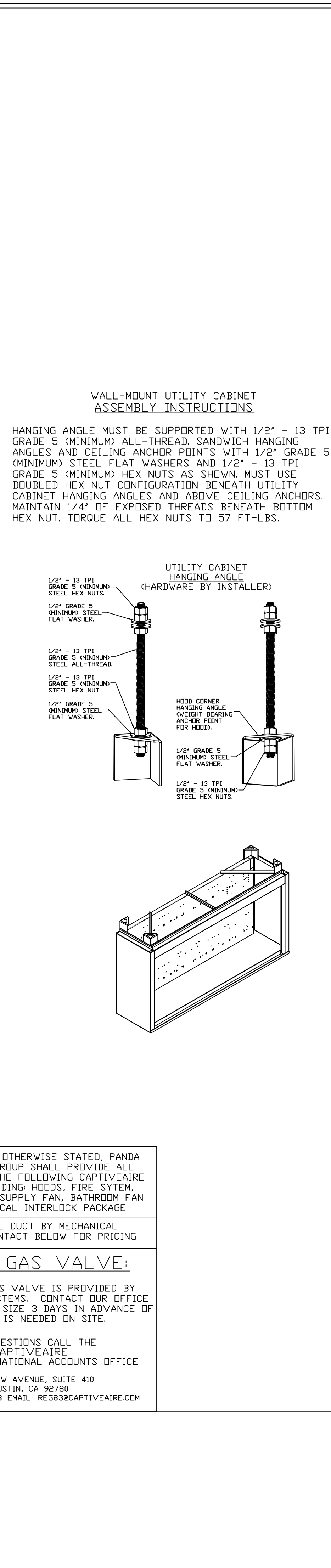


THESE DRAWINGS, SPECIFICATIONS AND ANY INFORMATION THEREON ARE THE PROPERTY OF THESE DRAWINGS AND PLANS ARCHITECTS P.C. ("ARCHITECT"). NO PART OF THESE DRAWINGS OR PLANS MAY BE REPRODUCED, COPIED, EITHER WHOLLY OR IN PART, WITHOUT THE EXPRESS WRITTEN PERMISSION OF ARCHITECT. SUCH REPRODUCTION OR USE IN ANY MANNER WITHOUT THE EXPRESS WRITTEN PERMISSION OF ARCHITECT SHALL BE CONSIDERED ACCEPTANCE OF ALL TERMS, CONDITIONS AND AGREES AND THE OBLIGATION TO CONSTRUCT IN FULLY ACCORDANCE WITH THE DRAWINGS. THE PLAN SHALL NOT BE USED FOR ANY PURPOSE OTHER THAN THAT AUTHORIZED BY ARCHITECT. ANY REPRODUCTION OR USE OF THESE DRAWINGS OR PLANS WITHOUT THE EXPRESS WRITTEN PERMISSION OF ARCHITECT SHALL BE CONSIDERED A VIOLATION OF ARCHITECT'S RIGHTS AND WILL BE SUBJECT TO LEGAL ACTION. ARCHITECT'S DESIGN IS BASED ON THE ASSUMPTIONS SET FORTH IN THE SPECIFICATIONS. ARCHITECT MAKES NO WARRANTY AS TO THE ACCURACY OF THE DATA PROVIDED BY OTHERS. ARCHITECT'S DESIGN IS BASED ON THE ASSUMPTIONS SET FORTH IN THE SPECIFICATIONS. ARCHITECT MAKES NO WARRANTY AS TO THE ACCURACY OF THE DATA PROVIDED BY OTHERS. ARCHITECT'S DESIGN IS BASED ON THE ASSUMPTIONS SET FORTH IN THE SPECIFICATIONS. ARCHITECT MAKES NO WARRANTY AS TO THE ACCURACY OF THE DATA PROVIDED BY OTHERS.

PRINTED 6/1/2023



UL LISTED L55 SERIES E26 CANDY LIGHT FIXTURE - HIGH TEMP ASSEMBLY

70 1/2"

6"

10"

78"

70 1/2"

11' 9" NDM / 11' 9.00" O.D.

13' 0" NDM / 13' 0.00" O.D.

13' - 3.00" OVERALL LENGTH

PLAN VIEW - HOOD #1
13' 0.00" LONG 4824ND-2

NOTE: ADDITIONAL HANGING ANGLES PROVIDED FOR HOODS 12" AND LONGER.

PLAN VIEW - HOOD #3
11' 9.00" LONG 226MISC ACPSP-ONLY

CAPTIVE-AIRE HOODS ARE
BUILT IN COMPLIANCE WITH
UL 710 AND NFPA 96
AND ARE RECOGNIZED BY ONE
OR MORE OF THE FOLLOWING:

ETL SANITATION LISTED

ETL LISTED
FILE# 102900319PRT-001

SERIES E26 CANOPY LIGHT FIXTURE - HIGH TENSILE
 70 1/2" 28"
 10"
 18"
 70 1/2"
 11' 9"NDM/11' 9.00"OD.
 13' 0"NDM/13' 0.00"OD.
 13'-3.00" OVERALL LENGTH
 PLAN VIEW - HOOD #1
 13' 0.00" LONG 4824ND-2
 AL HANGING ANGLES PROVIDED FOR HOODS 12' A
 PLAN VIEW - HOOD #3
 .00" LONG 226MISC ACPSP-ONL

SERIES E26 CANOPY LIGHT FIXTURE - HIGH
 70 1/2"

70 1/2"

1' 9"NDM./11' 9.00"OD. _____
 13' 0"NDM./13' 0.00"OD. _____
 13'-3.00' OVERALL LENGTH _____

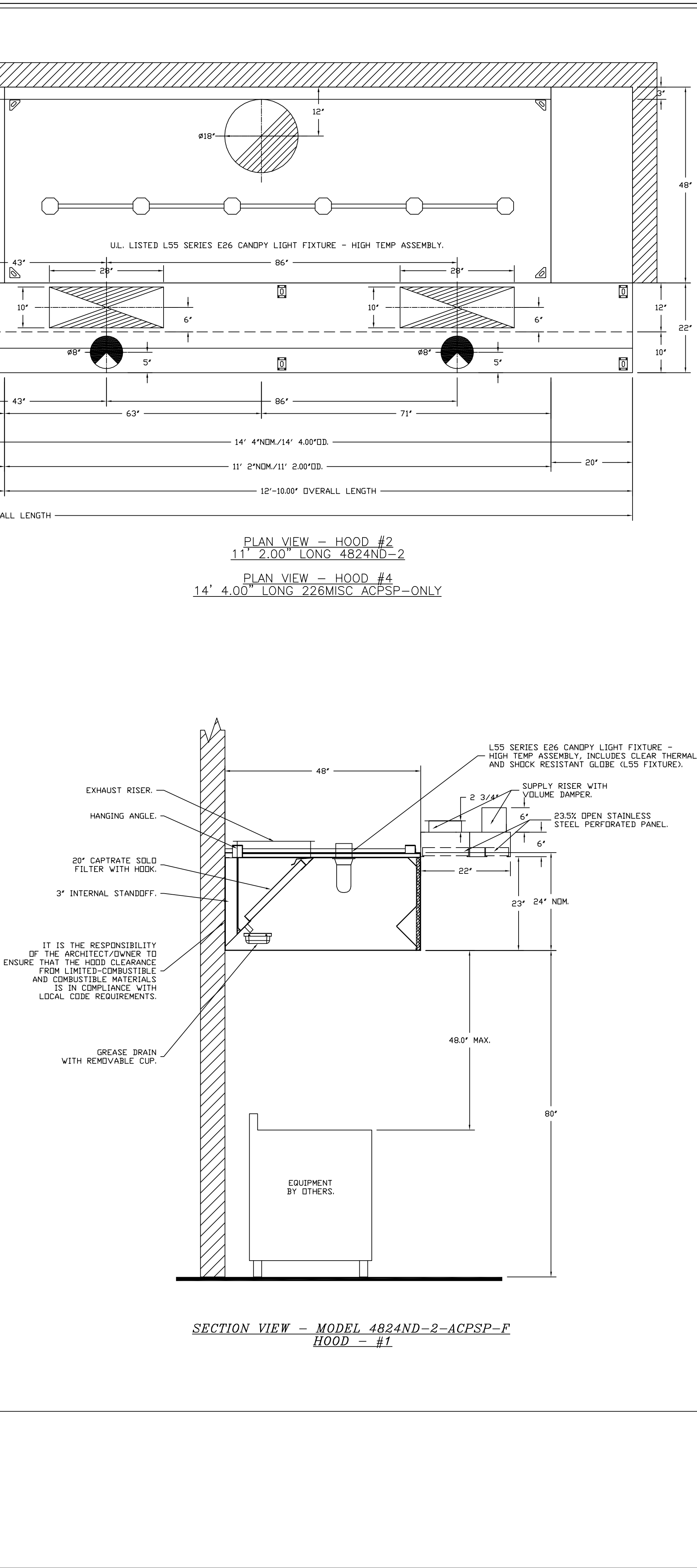
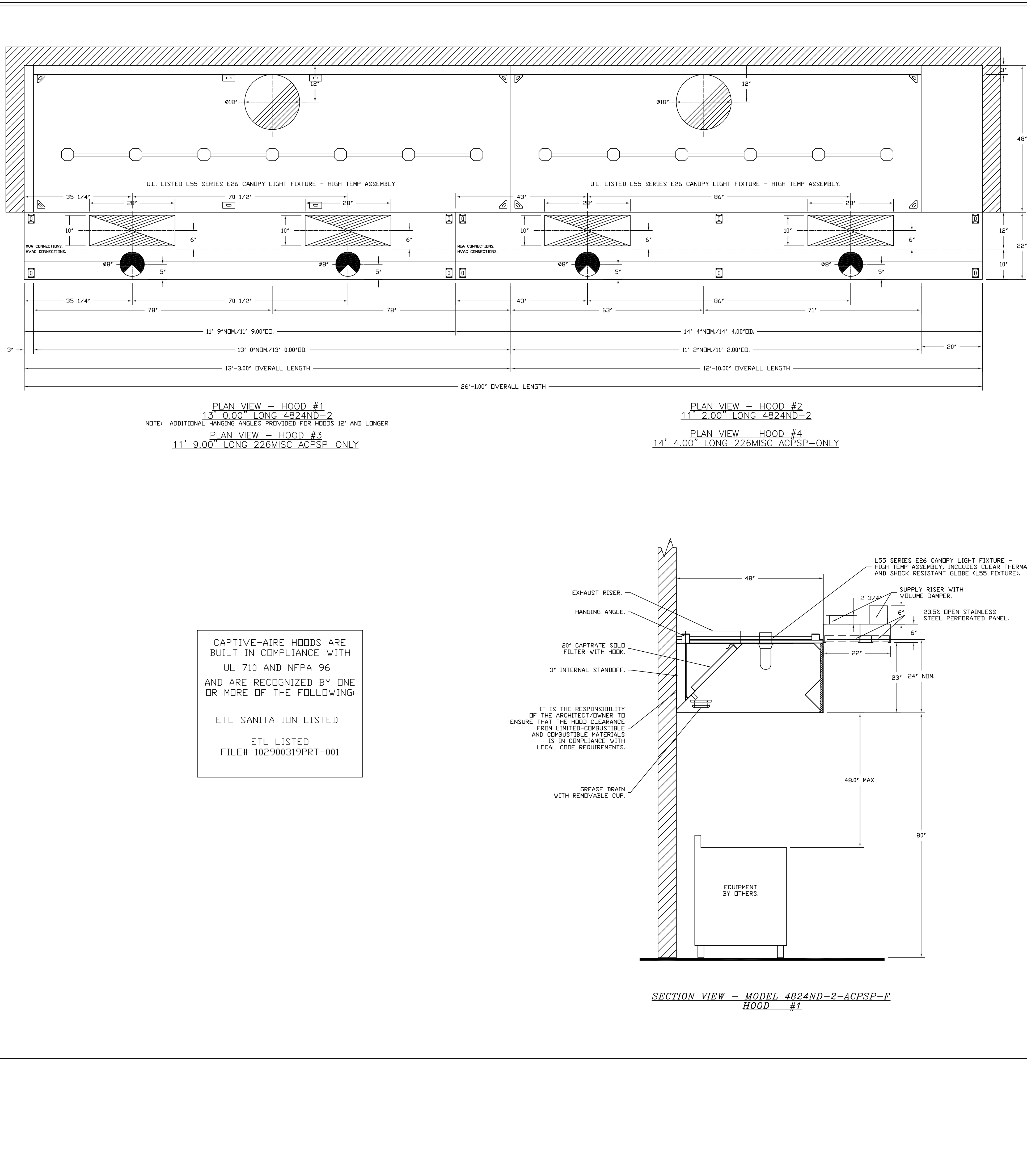
PLAN VIEW - HOOD #1
 3' 0.00" LONG 4824ND-2
 CHANGING ANGLES PROVIDED FOR HOODS 1

PLAN VIEW - HOOD #3
 0' LONG 226MISC ACPSP-C

CAPTIVE-AIRE HOODS ARE
 BUILT IN COMPLIANCE WITH
 UL 710 AND NFPA 96
 AND ARE RECOGNIZED BY CODE
 OR MORE OF THE FOLLOWING

ETL SANITATION LISTED

ETL LISTED
 FILE# 102900319PRT-001



SERIES E26 CANDPY LIGHT FIXTURE - HIGH TEMP ASSEMBLY.

86"

12"

28"

10"

86"

71"

14' 4"NDM/14' 4.00"DD.

11' 2"NDM/11' 2.00"DD.

12'-10.00" OVERALL LENGTH

PLAN VIEW - HOOD #2
11' 2.00" LONG 4824ND-2

PLAN VIEW - HOOD #4
14' 4.00" LONG 226MISC ACPSP-ONLY

48"

22"

48.0" MAX.

EQUIPMENT BY OTHERS.


1.55 HIGH AND
2 3/4"

SECTION VIEW - MODEL 4824ND-2-ACPSP-F
HOOD - #1

REVISIONS	
DESCRIPTION	DATE:
△	
△	
△	
△	

Panda Express - Concord NC (D24956)

450 Kannapolis Parkway,
Concord, NC, 28027



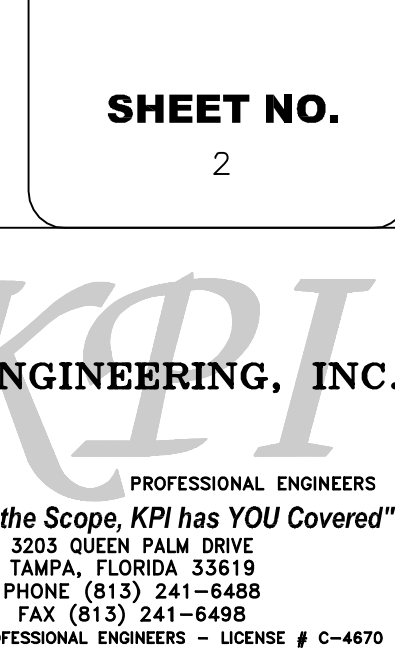
Southern CA National Accounts
www.captivate.com

3002 Dow Ave., Suite 410, Tustin, CA. 92780 PHONE: (714) 677-2963 EMAIL: reg83@captive.com

DATE: 5/4/2023
DWG.#: 5986683
DRAWN BY: AH-83
SCALE: 3/4" = 1'-0"
MASTER DRAWING

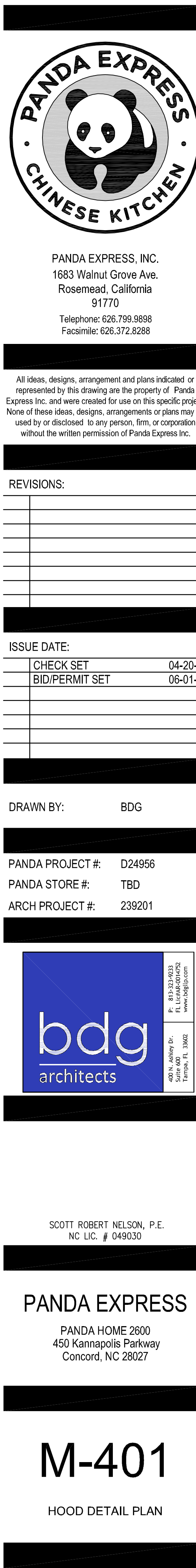
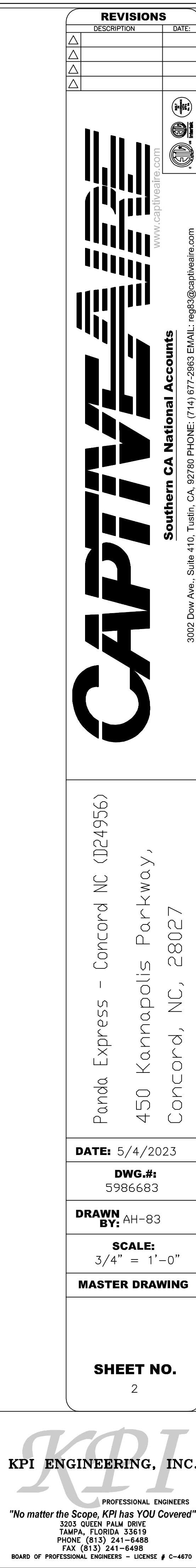
SHEET NO.

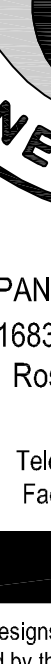

2




ENGINEERING, INC.

PROFESSIONAL ENGINEERS
"the Scope, KPI has YOU Covered"
 3203 QUEEN PALM DRIVE
 TAMPA, FLORIDA 33619
 PHONE (813) 241-6468
 FAX (813) 241-6468
 PROFESSIONAL ENGINEERS - LICENSE # C-4607



	
PANDA EXPRESS, INC. 1683 Walnut Grove Ave. Rosemead, California 91770 Telephone: 626.799.9898 Facsimile: 626.372.8288	
I hereby certify that the design, arrangement and plans are true and correct as shown on this drawing are the property of Panda Express, Inc. and were created for use on this project. No part of these designs, arrangements or specifications shall be reproduced or disclosed to any person, firm, or company without the written permission of Panda Express, Inc.	
DATE: _____	
CHECK SET BY: _____	
DRAWN BY / PERMIT SET BY: _____	
PROJECT #:	D24956
STORE #:	TBD
PROJECT #:	239201
 SCOTT ROBERT NELSON, P.E. NC LIC. # 049030	
PANDA HOME 2600 450 Kannapolis Parkway Concord, NC 28027	
M-401	
HOOD DETAIL PLAN	



PANDA EXPRESS, INC.
 1683 Walnut Grove Ave.
 Rosemead, California
 91770
 Telephone: 626.799.9898
 Facsimile: 626.372.8288

All ideas, designs, arrangement and plans indicated or represented by this drawing are the property of Panda Express Inc. and were created for use on this specific project. None of these ideas, designs, arrangements or plans may be used by or disclosed to any person, firm, or corporation without the written permission of Panda Express Inc.

REVISIONS:	

ISSUE DATE:	
CHECK SET	04-20-21
BID/PERMIT SET	06-01-21

DRAWN BY:

BDG

PANDA PROJECT #:


D24956

PANDA STORE #:

TBD

ARCH PROJECT #:

239201



P: 813-232-9031
 F: 813-232-9032
 www.bdgfirm.com

 400 N. Ashley Dr.,
 Tampa, FL 33602


SCOTT ROBERT NELSON, P.E.
 NC LIC. # 049030

PANDA EXPRESS

PANDA HOME 2600
 450 Kannapolis Parkway
 Concord, NC 28027

M-401

HOOD DETAIL PLAN



PANDA EXPRESS, INC.
 1683 Walnut Grove Ave.
 Rosemead, California
 91770
 Telephone: 626.799.9898
 Facsimile: 626.372.8288

All ideas, designs, arrangement and plans indicated or represented by this drawing are the property of Panda Express Inc. and were created for use on this specific project. None of these ideas, designs, arrangements or plans may be used by or disclosed to any person, firm, or corporation without the written permission of Panda Express Inc.


REVISIONS:

ISSUE DATE:

CHECK SET	04-20-21
BID/PERMIT SET	06-01-21

DRAWN BY: BDG

PANDA PROJECT #: D24956
PANDA STORE #: TBD
ARCH PROJECT #: 239201



P: 813-232-9031
 F: 813-232-9032
 www.bdgstudio.com

SCOTT ROBERT NELSON, P.E.
 NC LIC. # 049030


P: 404-444-6669
 F: 404-444-6669
 Tampa, FL 33602

PANDA EXPRESS

PANDA HOME 2600
 450 Kannapolis Parkway
 Concord, NC 28027

M-401

HOOD DETAIL PLAN



PANDA EXPRESS, INC.
 1683 Walnut Grove Ave.
 Rosemead, California
 91770
 Telephone: 626.799.9898
 Facsimile: 626.372.8288

All ideas, designs, arrangement and plans indicated or represented by this drawing are the property of Panda Express Inc. and were created for use on this specific project. None of these ideas, designs, arrangements or plans may be used by or disclosed to any person, firm, or corporation without the written permission of Panda Express Inc.


REVISIONS:

ISSUE DATE:

CHECK SET	04-20-21
BID/PERMIT SET	06-01-21

DRAWN BY: BDG

PANDA PROJECT #: D24956
PANDA STORE #: TBD
ARCH PROJECT #: 239201



P: 813-232-9031
 F: 813-232-9032
 www.bdg-studio.com

400 N. Ashley Dr.,
 Suite 100
 Tampa, FL 33602


SCOTT ROBERT NELSON, P.E.
 NC LIC. # 049030

PANDA EXPRESS

PANDA HOME 2600
 450 Kannapolis Parkway
 Concord, NC 28027

M-401

HOOD DETAIL PLAN



PANDA EXPRESS, INC.
 1683 Walnut Grove Ave.
 Rosemead, California
 91770
 Telephone: 626.799.9898
 Facsimile: 626.372.8288

All ideas, designs, arrangement and plans indicated or represented by this drawing are the property of Panda Express Inc. and were created for use on this specific project. None of these ideas, designs, arrangements or plans may be used by or disclosed to any person, firm, or corporation without the written permission of Panda Express Inc.


REVISIONS:

ISSUE DATE:

CHECK SET	04-20-21
BID/PERMIT SET	06-01-21

DRAWN BY: BDG

PANDA PROJECT #: D24956
PANDA STORE #: TBD
ARCH PROJECT #: 239201



P: 813-232-9031
 F: 813-232-9032
 www.bdg-studio.com

400 N. Ashley Dr.,
 Suite 100
 Tampa, FL 33602


SCOTT ROBERT NELSON, P.E.
 NC LIC. # 049030

PANDA EXPRESS

PANDA HOME 2600
 450 Kannapolis Parkway
 Concord, NC 28027

M-401

HOOD DETAIL PLAN



PANDA EXPRESS, INC.
 1683 Walnut Grove Ave.
 Rosemead, California
 91770
 Telephone: 626.799.9898
 Facsimile: 626.372.8288

All ideas, designs, arrangement and plans indicated or represented by this drawing are the property of Panda Express Inc. and were created for use on this specific project. None of these ideas, designs, arrangements or plans may be used by or disclosed to any person, firm, or corporation without the written permission of Panda Express Inc.


REVISIONS:

ISSUE DATE:

CHECK SET	04-20-21
BID/PERMIT SET	06-01-21

DRAWN BY: BDG

PANDA PROJECT #: D24956
PANDA STORE #: TBD
ARCH PROJECT #: 239201



P: 813-232-9031
 F: 813-232-9032
 www.bdgstudio.com

400 N. Ashley Dr.
 Tampa, FL 33602


SCOTT ROBERT NELSON, P.E.
 NC LIC. # 049030

PANDA EXPRESS

PANDA HOME 2600
 450 Kannapolis Parkway
 Concord, NC 28027

M-401

HOOD DETAIL PLAN



PANDA EXPRESS, INC.
 1683 Walnut Grove Ave.
 Rosemead, California
 91770
 Telephone: 626.799.9898
 Facsimile: 626.372.8288

All ideas, designs, arrangement and plans indicated or represented by this drawing are the property of Panda Express Inc. and were created for use on this specific project. None of these ideas, designs, arrangements or plans may be used by or disclosed to any person, firm, or corporation without the written permission of Panda Express Inc.


REVISIONS:

ISSUE DATE:

CHECK SET	04-20-21
BID/PERMIT SET	06-01-21

DRAWN BY: BDG

PANDA PROJECT #: D24956
PANDA STORE #: TBD
ARCH PROJECT #: 239201



P: 813-232-9031
 F: 813-232-9032
 www.bdgstudio.com

400 N. Ashley Dr.
 Tampa, FL 33602


SCOTT ROBERT NELSON, P.E.
 NC LIC. # 049030

PANDA EXPRESS

PANDA HOME 2600
 450 Kannapolis Parkway
 Concord, NC 28027

M-401

HOOD DETAIL PLAN



PANDA EXPRESS, INC.
 1683 Walnut Grove Ave.
 Rosemead, California
 91770
 Telephone: 626.799.9898
 Facsimile: 626.372.8288

All ideas, designs, arrangement and plans indicated or represented by this drawing are the property of Panda Express Inc. and were created for use on this specific project. None of these ideas, designs, arrangements or plans may be used by or disclosed to any person, firm, or corporation without the written permission of Panda Express Inc.


REVISIONS:

ISSUE DATE:

CHECK SET	04-20-21
BID/PERMIT SET	06-01-21

DRAWN BY: BDG

PANDA PROJECT #: D24956
PANDA STORE #: TBD
ARCH PROJECT #: 239201



P: 813-232-9031
 F: 813-232-9032
 www.bdg-studio.com

400 N. Ashley Dr.,
 Suite 100
 Tampa, FL 33602


SCOTT ROBERT NELSON, P.E.
 NC LIC. # 049030

PANDA EXPRESS

PANDA HOME 2600
 450 Kannapolis Parkway
 Concord, NC 28027

M-401

HOOD DETAIL PLAN



PANDA EXPRESS, INC.
 1683 Walnut Grove Ave.
 Rosemead, California
 91770
 Telephone: 626.799.9898
 Facsimile: 626.372.8288

All ideas, designs, arrangement and plans indicated or represented by this drawing are the property of Panda Express Inc. and were created for use on this specific project. None of these ideas, designs, arrangements or plans may be used by or disclosed to any person, firm, or corporation without the written permission of Panda Express Inc.

REVISIONS:	

ISSUE DATE:	
CHECK SET	04-20-21
BID/PERMIT SET	06-01-21

DRAWN BY:

BDG

PANDA PROJECT #:


D24956

PANDA STORE #:

TBD

ARCH PROJECT #:

239201



P: 813-232-9031
 F: 813-232-9032
www.bdgfirm.com

 400 N. Ashley Dr.,
 Tampa, FL 33602


SCOTT ROBERT NELSON, P.E.
 NC LIC. # 049030

PANDA EXPRESS

PANDA HOME 2600
 450 Kannapolis Parkway
 Concord, NC 28027

M-401

HOOD DETAIL PLAN



PANDA EXPRESS, INC.
 1683 Walnut Grove Ave.
 Rosemead, California
 91770
 Telephone: 626.799.9898
 Facsimile: 626.372.8288

All ideas, designs, arrangement and plans indicated or represented by this drawing are the property of Panda Express Inc. and were created for use on this specific project. None of these ideas, designs, arrangements or plans may be used by or disclosed to any person, firm, or corporation without the written permission of Panda Express Inc.


REVISIONS:

ISSUE DATE:

CHECK SET	04-20-21
BID/PERMIT SET	06-01-21

DRAWN BY: BDG

PANDA PROJECT #: D24956
PANDA STORE #: TBD
ARCH PROJECT #: 239201



P: 813-232-9031
 F: 813-232-9032
 www.bdgstudio.com

400 N. Ashley Dr.
 Tampa, FL 33602

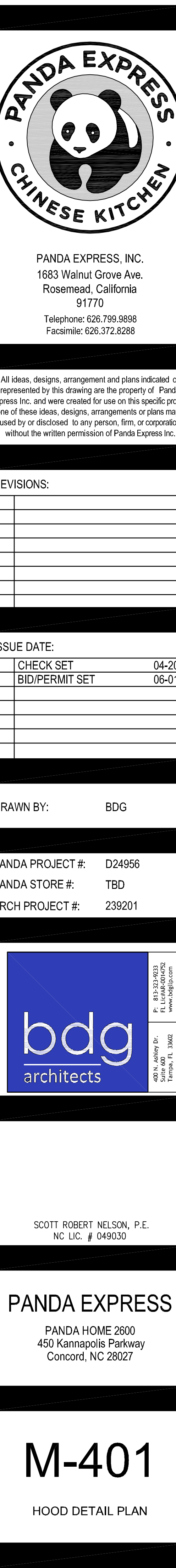
SCOTT ROBERT NELSON, P.E.
 NC LIC. # 049030

PANDA EXPRESS

PANDA HOME 2600
 450 Kannapolis Parkway
 Concord, NC 28027


M-401

HOOD DETAIL PLAN



	
PANDA EXPRESS, INC. 1683 Walnut Grove Ave. Rosemead, California 91770 Telephone: 626.799.9898 Facsimile: 626.372.8288	
I, _____, designs, arrangement and plans inc _____ by this drawing are the property _____ and were created for use on this sp _____ use ideas, designs, arrangements or p _____ or disclosed to any person, firm, or _____ the written permission of Panda Exp	
SIGNED: _____	
DATE: _____	
CHECK SET _____	
D/PERMIT SET _____	

BY: _____	BDO _____
PROJECT #: _____	D24956
STORE #: _____	TBD
PROJECT #: _____	239201
	
SCOTT ROBERT NELSON, P.E. NC LIC. # 049030	
PANDA EXPRESS PANDA HOME 2600 450 Kannapolis Parkway Concord, NC 28027	
M-401	
HOOD DETAIL PLAN	



PANDA EXPRESS, INC.
 1683 Walnut Grove Ave.
 Rosemead, California
 91770
 Telephone: 626.799.8988
 Facsimile: 626.372.8288

All ideas, designs, arrangement and plans indicated represented by this drawing are the property of Panda Express Inc. and were created for use on this specific project. One of these ideas, designs, arrangements or plans may be used by or disclosed to any person, firm, or corporation without the written permission of Panda Express Inc.

REVISIONS:	


ISSUE DATE:	
CHECK SET	04-0
BID/PERMIT SET	06-0

DRAWN BY: BDG

PANDA PROJECT #: D24956

PANDA STORE #: TBD

ARCH PROJECT #: 239201



400 N. Albany Dr.
 Suite 400
 Ft. Lauderdale, FL 33309
 P: 813-232-2613
 F: 813-232-0672



SCOTT ROBERT NELSON, P.E.
 NC LIC. # 049030


PANDA EXPRESS

PANDA HOME 2600
 450 Kannapolis Parkway
 Concord, NC 28027

M-401

HOOD DETAIL PLAN

	
PANDA EXPRESS, INC. 1683 Walnut Grove Ave. Rosemead, California 91770 Telephone: 626.799.9898 Facsimile: 626.372.8288	
I hereby certify that the designs, arrangement and plans in this drawing are the property of Panda Express, Inc. and were created for use on this project. No part of these ideas, designs, arrangements or drawings shall be disclosed to any person, firm, or company without the written permission of Panda Express, Inc.	
DATE: _____	
CHECK SET _____	
BY/PERMIT SET _____	
BY: _____	BDG _____
PROJECT #: _____	D24956
STORE #: _____	TBD
PROJECT #: _____	239201
	
SCOTT ROBERT NELSON, P.E. NC LIC. # 049030	
PANDA EXPRESS PANDA HOME 2600 450 Kannapolis Parkway Concord, NC 28027	
M-401	
SHOOD DETAIL PLAN	



PANDA EXPRESS, INC.
 1683 Walnut Grove Ave.
 Rosemead, California
 91770
 Telephone: 626.799.9898
 Facsimile: 626.372.8288

Idea, designs, arrangement and plans indicated on this drawing are the property of Panda Express, Inc. and were created for use on this project. These ideas, designs, arrangements or plans are not to be reproduced, copied, or disclosed to any person, firm, or corporation without the written permission of Panda Express, Inc.

REVISIONS:

DATE:


CHECK SET
BID/PERMIT SET

OWN BY: **BDG**

PROJECT #: **D24956**

STORE #: **TBD**

PROJECT #: **239201**



SCOTT ROBERT NELSON, P.E.
 NC LIC. # 049030


PANDA EXPRESS

PANDA HOME 2600
 450 Kannapolis Parkway
 Concord, NC 28027

M-401

HOOD DETAIL PLAN

[illegible]



PANDA EXPRESS, INC.
 1683 Walnut Grove Ave.
 Rosemead, California
 91770
 Telephone: 626.799.9898
 Facsimile: 626.372.8288

designs, arrangement and plans
 ed by this drawing are the property
 and were created for use on this
 e ideas, designs, arrangements or
 disclosed to any person, firm, or
 the written permission of Panda E

NS:

DATE:

CHECK SET
 /PERMIT SET

BY: BDG

PROJECT #: D24956
 STORE #: TBD
 PROJECT #: 239201

bdg

architects

SCOTT ROBERT NELSON, P.
 NC LIC. # 049030

PANDA EXPRESS

PANDA HOME 2600
 450 Kannapolis Parkway
 Concord, NC 28027

M-401

HOOD DETAIL PLAN