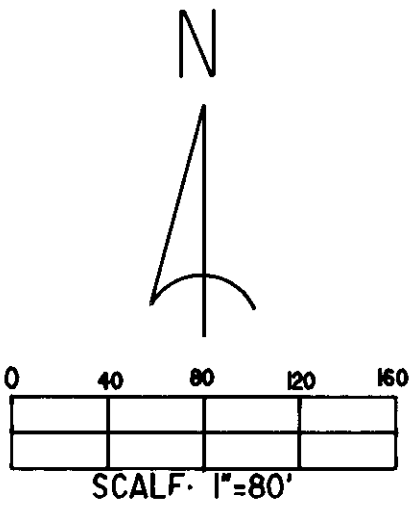


RECORD OF SURVEY NO: 36-III

IN THE INCORPORATED TOWN OF MAMMOTH LAKES, COUNTY OF MONO, STATE OF CALIFORNIA, BEING A PORTION OF SECTION 35, TOWNSHIP 3 SOUTH RANGE 27 EAST, MT. DIABLO BASE LINE AND MERIDIAN. THOSE PORTIONS MORE SPECIFICALLY DESCRIBED AS FOLLOWS:

1. THE NW 1/4 OF THE NW 1/4 OF THE NW 1/4 OF THE SE 1/4 OF THE NW 1/4
2. THE W 1/2 OF THE NE 1/4 OF THE NW 1/4 OF THE NW 1/4 OF THE SE 1/4 OF THE NW 1/4
3. THE SW 1/4 OF THE SW 1/4 OF THE SW 1/4 OF THE NE 1/4 OF THE NW 1/4
4. THE W 1/2 OF THE SE 1/4 OF THE SW 1/4 OF THE SW 1/4 OF THE NE 1/4 OF THE NW 1/4
5. THE S 1/2 OF THE NW 1/4 OF THE SW 1/4 OF THE SW 1/4 OF THE NE 1/4 OF THE NW 1/4



PARTIAL PLAT OF SIERRA VISTA ESTATES NO. 2, MONO COUNTY CALIFORNIA, MAP BK. 2, Pg. II4-II6, DATED MAR. 2, 1962 PLACED TO BEST FIT FOUND CORNERS DISTANCES ARE RECORD DISTANCES AND BEARINGS ARE ROTATED TO MATCH SURVEY BASIS OF BEARING.

USED THE FOUND MONUMENT LOCATED AT THE SE COR OF LOT 4 AS POSITION BASIS TO ESTABLISH THE WESTERLY R/W OF FOREST TRAIL ROAD AND THE RELATIVE POSITION OF THE FOUND MONUMENT AT THE NW COR OF LOT 67 TO ESTABLISH A BASIS OF BEARING.

THE POSITION VARIATIONS FOR CORNERS BORDERING LOTS 67 AND 68 ARE CALCULATED WITH THE NW COR OF LOT 67 AS BASIS OF POSITION AND LOTS 1-10 ARE CALCULATED WITH THE SE COR OF LOT 4 AS BASIS OF POSITION.

SURVEYORS NOTES

BASIS OF BEARING IS THE NORTH LINE OF THE NW 1/4 OF THE NW 1/4 OF SECTION 35, SEE (R-2)

● FND. MONUMENT AS NOTED

○ SET AN ALUMINUM POST 30" LONG 2-1/2" DIA. WITH 3-1/4" CAP MARKED AS NOTED

(M) INDICATES DISTANCES MEASURED IN THIS SURVEY

(R-1) RECORD DATA PER OFFICIAL TOWNSHIP PLAT APPROVED MAY 15, 1882.

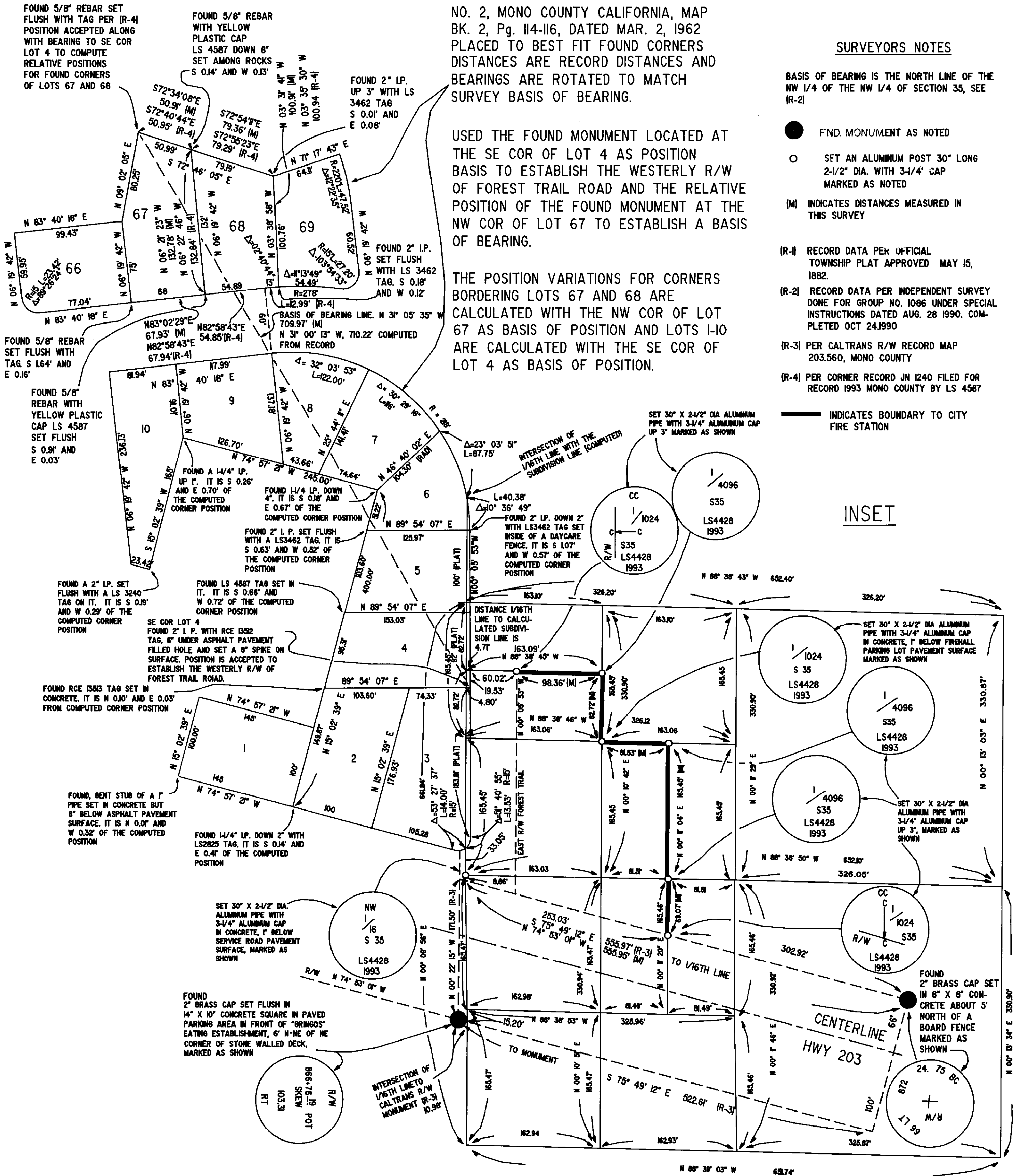
(R-2) RECORD DATA PER INDEPENDENT SURVEY DONE FOR GROUP NO. 1086 UNDER SPECIAL INSTRUCTIONS DATED AUG. 28 1990. COMPLETED OCT 24 1990

(R-3) PER CALTRANS R/W RECORD MAP 203.560, MONO COUNTY

(R-4) PER CORNER RECORD JN 1240 FILED FOR RECORD 1993 MONO COUNTY BY LS 4587

— INDICATES BOUNDARY TO CITY FIRE STATION

INSET



13.8. 1043 19 31.4