

CORNER RECORD

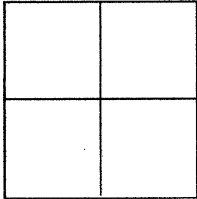
Agency Index

BK 96 PL 95

Document Number

CR 9933City of BERKELEYCounty of ALAMEDA

, California

Brief Legal Description CITY OF BERKELEY MONUMENT B3071, LOCATED AT THE ALAMEDA & HOPKINS STREET, SOUTH CORNER.**CORNER TYPE****COORDINATES (Optional)**Government Corner ☐ Control ☒Meander ☐ Property ☐Rancho ☐ Other ☐Date of Survey 3/21/17

N. _____ E. _____

Elevation _____

Units _____ Metric ☐ U.S. Survey Foot ☐

Horizontal Datum _____

Zone _____ Epoch Date _____

Vertical Datum _____

☐ Complies with Public Resources Code §§8801-8819☐ Complies with Public Resources Code §§8801-8902

PLS Act Ref.:

☐ 8765(d)☒ 8771☐ 8773☐ Other:Corner/
Monument:☒ Left as found☐ Established☐ Rebuilt☒ Pre-Construction☐ Found and tagged☐ Reestablished☐ Referenced☐ Post-Construction

Narrative of corner identified and monument as found, set, reset, replaced, or removed.

☒ See sheet #2 for description(s)**SURVEYOR'S STATEMENT**

This Corner Record was prepared by me or under my direction in conformance with

the Professional Land Surveyor's Act on APRIL 7, 2017

Signed

P.L.S. or R.C.E. No.

8178**COUNTY SURVEYOR'S STATEMENT**

This Corner Record was received

28 APRIL, 2017

and examined and filed

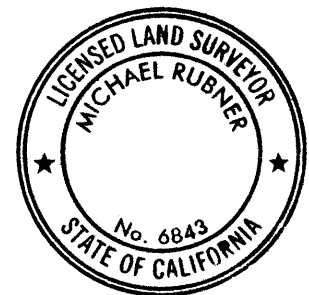
26 JULY, 2017

Signed

P.L.S. or R.C.E. No.

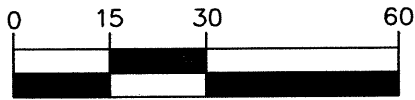
6843

Title

COUNTY SURVEYOR**County Surveyor's Comment**

KSR JOB# 19653-17-01

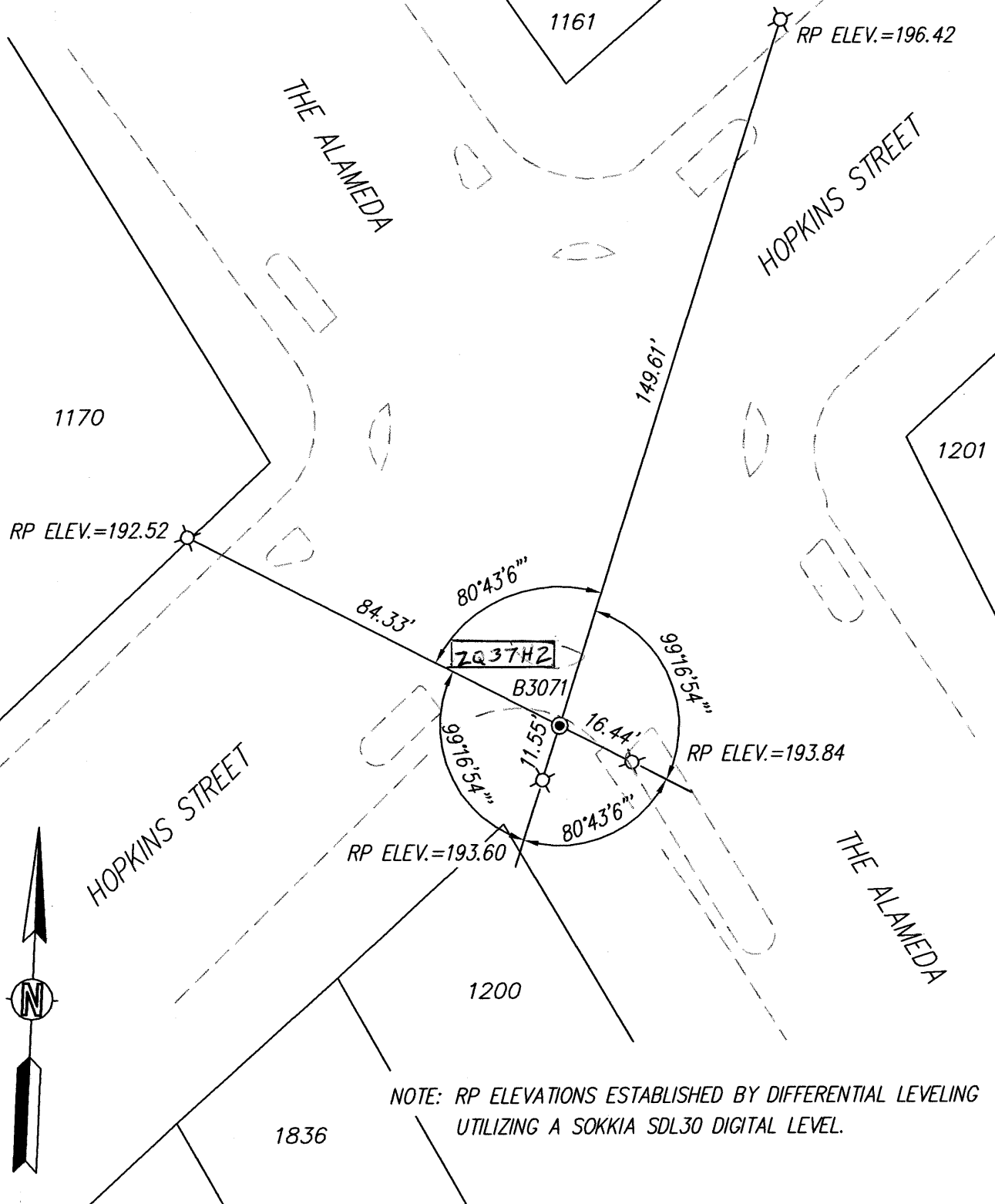
GRAPHIC SCALE



(IN FEET)
1 inch = 30 ft.

LEGEND

- = FOUND CITY MONUMENT B3071;
1/4" BRASS PIN IN WEST SIDEWALK
ELEVATION = 193.64 COB DATUM
- ⊗ = SET MAG NAIL REFERENCE POINT (RP)



NOTE: RP ELEVATIONS ESTABLISHED BY DIFFERENTIAL LEVELING
UTILIZING A SOKKIA SDL30 DIGITAL LEVEL.