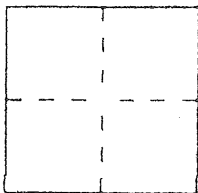


# CORNER RECORD

BK 28 Pg 6  
Document Number CR 3131

City of SAN LEANDRO County of ALAMEDA, California

Brief Legal Description LOT 5, 'DUTTON MANOR ADDITION'  
FILED JULY 29, 1912, MAP BOOK 27, PAGE 7



## CORNER TYPE

Government Corner ☐ Control ☐  
Meander ☐ Property ☒  
Rancho ☐ Other ☐  
Date of Survey AUGUST 1, 2007

## COORDINATES (Optional)

N. \_\_\_\_\_  
E. \_\_\_\_\_  
Zone \_\_\_\_\_ Datum \_\_\_\_\_  
Elev. \_\_\_\_\_

Corner — Left as found ☐ Found and tagged ☐ Established ☒ Reestablished ☐ Rebuilt ☐

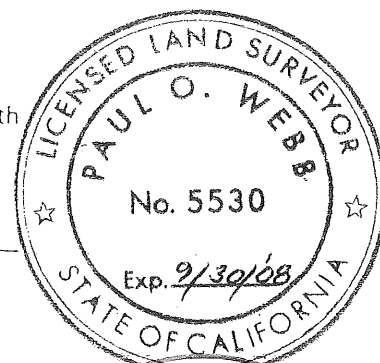
Identification and type of corner found: Evidence used to identify or procedure used to establish or reestablish the corner: USED FOUND MONUMENTS PER CR 937 TO  
ESTABLISH PROPERTY CORNERS

A description of the physical condition of the monument as found and as set or reset: FOUND  
MONUMENTS IN GOOD CONDITION. SET 2 IRON  
PIPES 3/4" I.D. WITH PLASTIC CAPS L.S. 5530

## SURVEYOR'S STATEMENT

This Corner Record was prepared by me or under my direction in conformance with the Land Surveyors' Act on AUGUST 13 19 2007

Signed Paul O. Webb L.S. or R.C.E. Number LS 5530

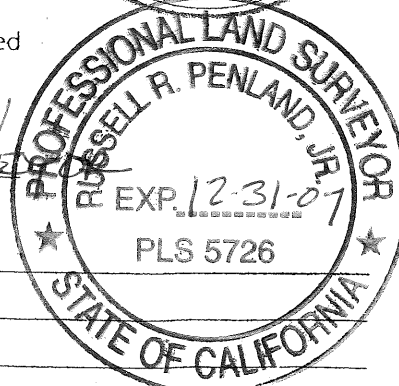


## COUNTY SURVEYOR'S STATEMENT

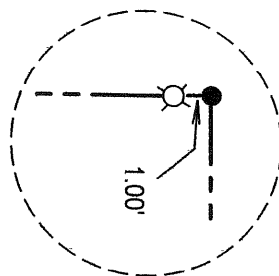
This Corner Record was received 10-15 1907 and examined and filed 11-16-2007.

Signed Redmond Title County Surveyor

County Surveyor's Comment \_\_\_\_\_



Detail A - no scale

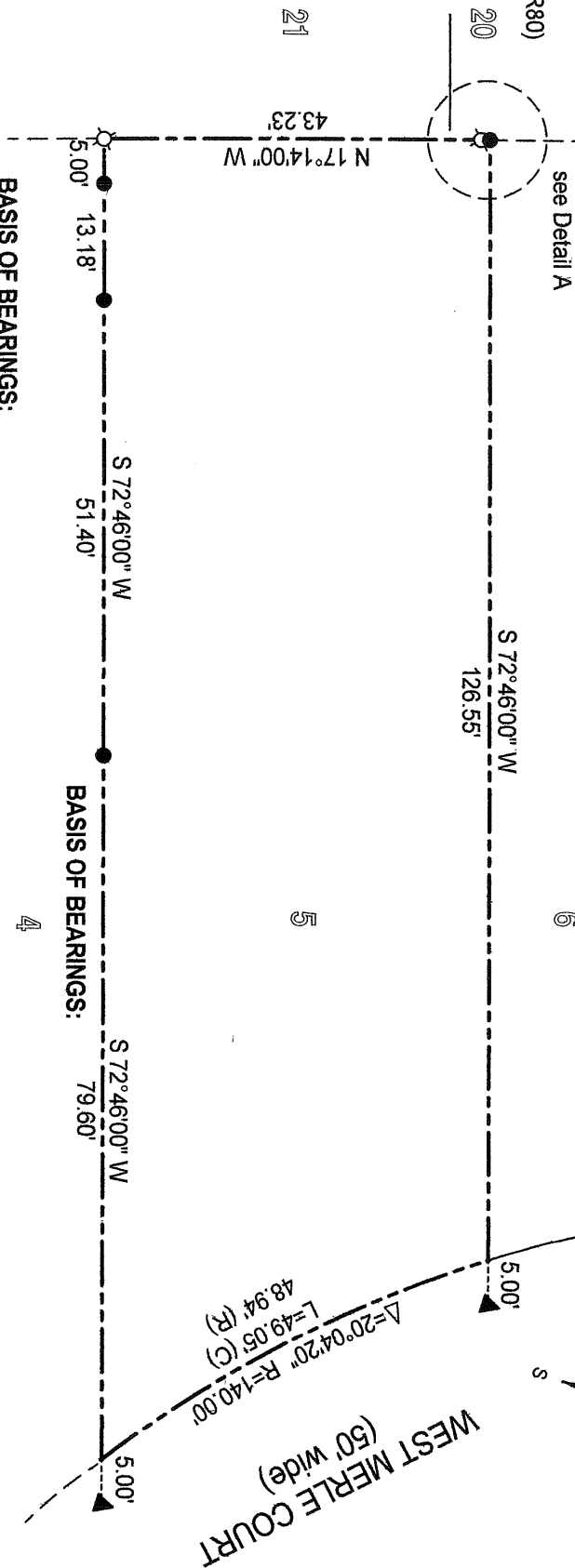


**LOT 5, DUTTON MANOR ADDITION**  
**FILED JULY 29, 1912, MAP BOOK 27, PAGE 7**  
**ALAMEDA COUNTY RECORDS**  
**CITY OF SAN LEANDRO, COUNTY OF ALAMEDA, CALIFORNIA**  
**APN. 26-297-16**  
**AUGUST, 2007**

Corner Record  
 3079  
 (26CR80)

see Detail A

**MAP OF BROADMOOR (23 M 68)**



**BASIS OF BEARINGS:**

The line between found monuments on the boundary between Lots 5 and 4 taken as N 72°46'00" W per Corner Record 937 filed with the Alameda County Surveyor, dated November 22, 1997, and the map of Dutton Manor Addition, Book 27 Maps, Page 7.

**BASIS OF BEARINGS:**

**LEGEND:**

- found 3/4" iron pipe LS 5530 per Corner Record 937
- ▲ found nail per Corner Record 937 reset nail and tag LS 5530
- set 3/4" iron pipe LS 5530
- (R) record distance per 27 M 7
- (C) calculated distance

SCALE: 1 INCH = 20 FEET

0		
20		
40		

Paul O. Webb-Licensed Surveyor  
 2724 Ninth Street, Suite B  
 Berkeley, Ca. 94710

job# 070727C

August 12, 2007