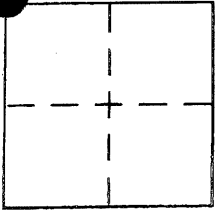


# CORNER RECORD

BK23 Pg 86  
Document Number CR 2547City of Eden Township (Unincorporated)County of Alameda, CaliforniaBrief Legal Description Lot 19, Block E, Map of the Orchard Tract, Eden Township filed June 18, 1907 BK 23 Pg 11,  
Alameda County Records

## CORNER TYPE

Government Corner ☐ Control ☐  
Meander ☐ Property ☒  
Rancho ☐ Other ☐  
Date of Survey 09/14/2005

## COORDINATES (Optional)

N. \_\_\_\_\_  
E. \_\_\_\_\_  
Zone \_\_\_\_\_ NAD27 ☐ NAD83 ☐  
NAD83 Epoch \_\_\_\_\_  
Elev. \_\_\_\_\_  
Vert. Datum: NGVD29 ☐ NAVD88 ☐  
Meas. Units: Metric ☐ Imperial ☒

Corner – Left as found ☐ Found and tagged ☐ Established ☒ Reestablished ☐ Rebuilt ☐

Identification and type of corner found: Evidence used to identify or procedure used to establish or reestablish the corner:  
Held the record relationship of line surveyed with the found monument well with straddles, at the intersection of Los Banos Street and 167th Avenue and reestablished railroad spike at the intersection of Los Banos Street and 168th Avenue, as per Parcel Map No. 1506 filed November 15, 1974, Book 84 Page 73. Position of railroad spike reestablished per Map of Tract 6580, filed February 29, 1966, Book 224 page 35-39.

A description of the physical condition of the monument as found and as set or reset:

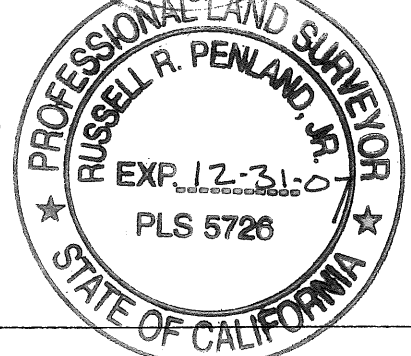
SEE LEGEND (Page 2)

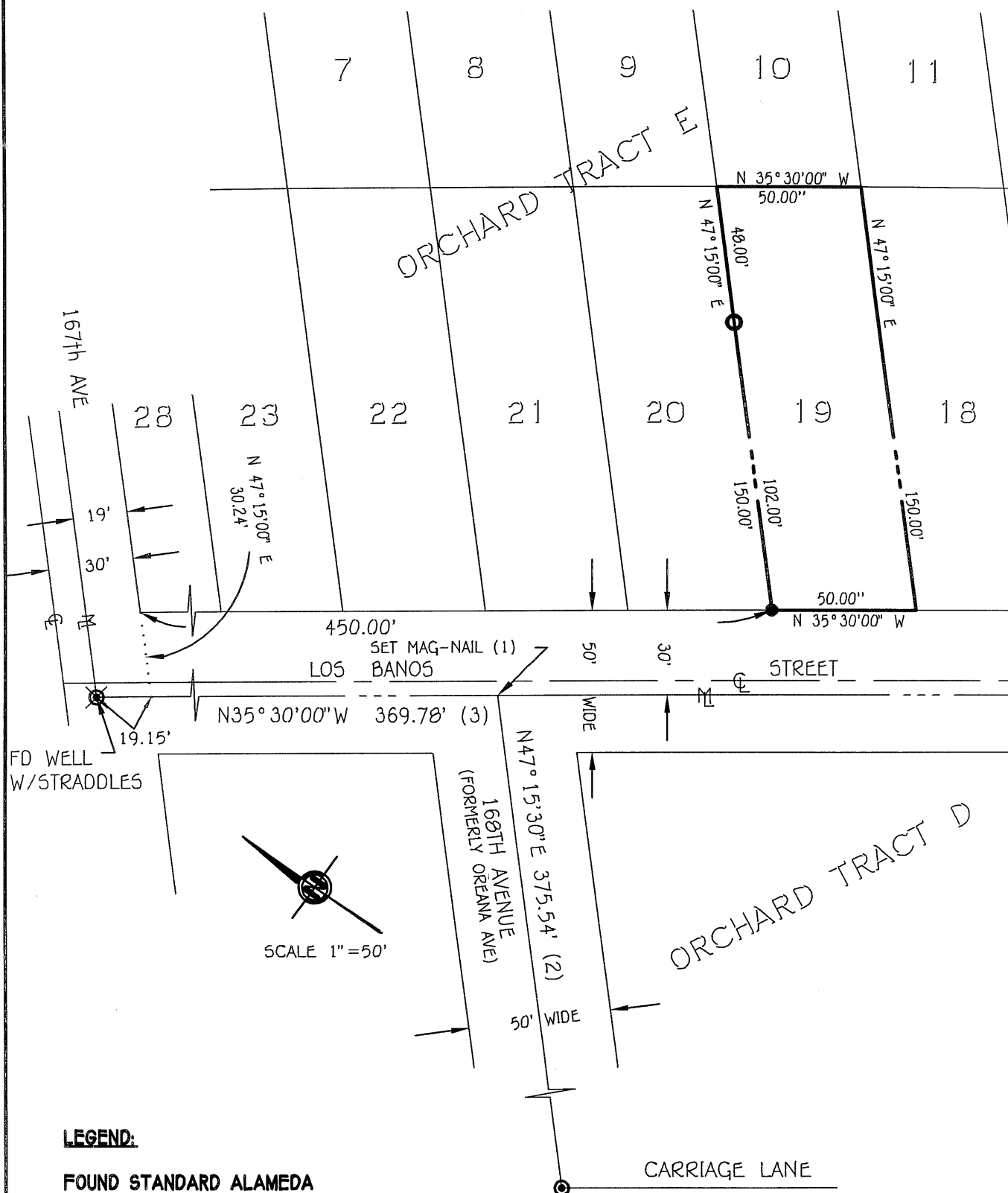
## SURVEYOR'S STATEMENT

This Corner Record was prepared by me or under my direction in conformance with  
the Land Surveyor's Act on April 28 2006  
Signed [Signature] P.L.S or R.C.E. No. L.S. 7905

## COUNTY SURVEYOR'S STATEMENT

This Corner Record was received \_\_\_\_\_  
and examined and filed 5-11-06  
Signed [Signature] P.L.S or R.C.E. No. 5726  
Title COUNTY SURVEYOR  
County Surveyor's Comment \_\_\_\_\_





**LEGEND:**

FOUND STANDARD ALAMEDA COUNTY MONUMENT (1)  
 SET BRASS TAG L.S. 7905 (2)  
 SET REBAR & CAP L.S. 7905 (3)

**REFERENCE:**

- (1) SEARCH FOR RR SPIKE NOT FOUND, SET MAG-NAIL PER PM NO. 1506 FILED 11-15-74, BOOK 84 PAGE 73
- (2) TRACT 6580 FILED 2-29-96, BOOK 224 PAGE 39
- (3) ORCHARD TRACT FILED 6-18-07, BOOK 23 PAGE 11