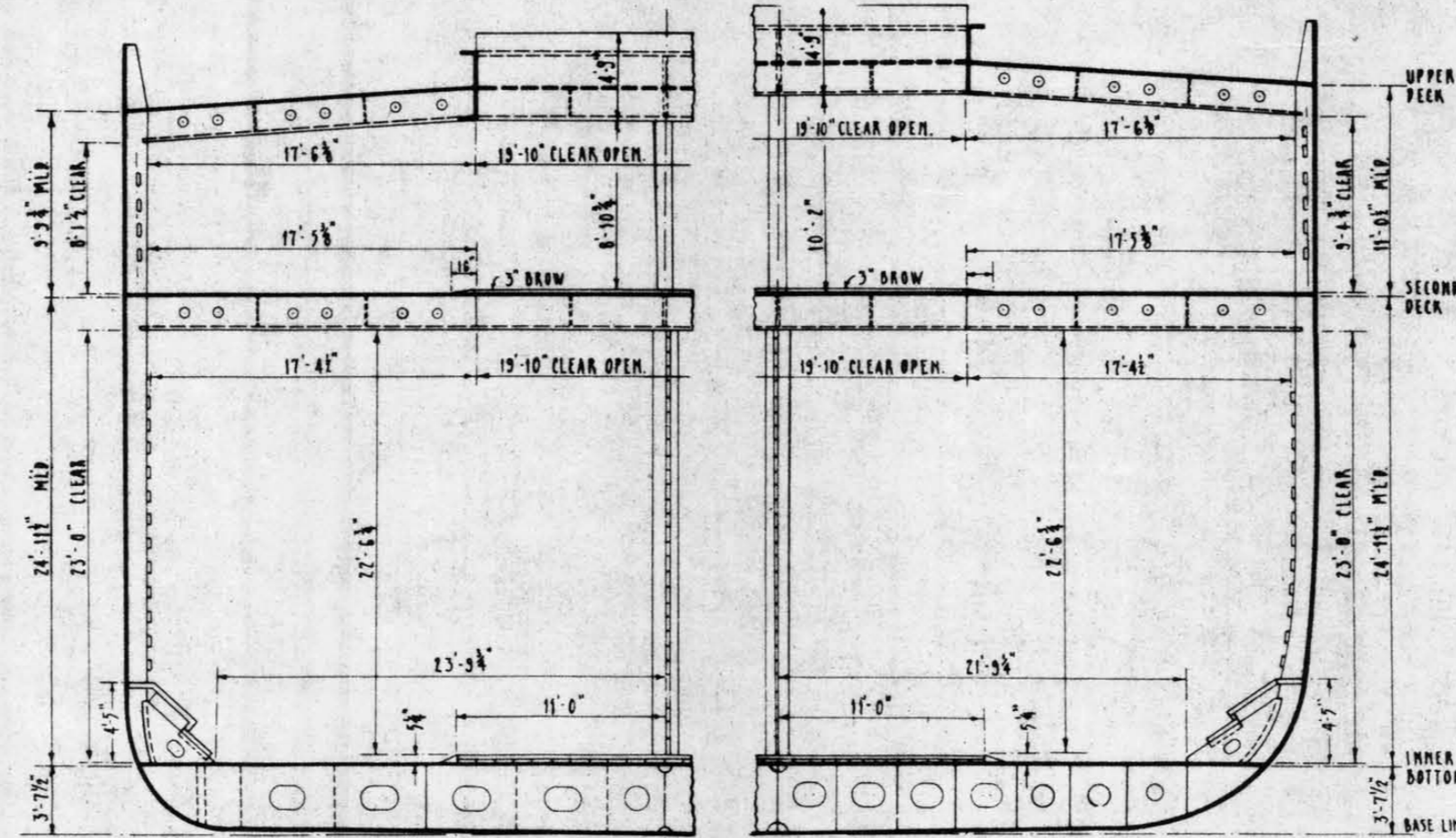


SECT. - FR. 154  
LOOKING AFT  
AFT END N° 5 HATCH

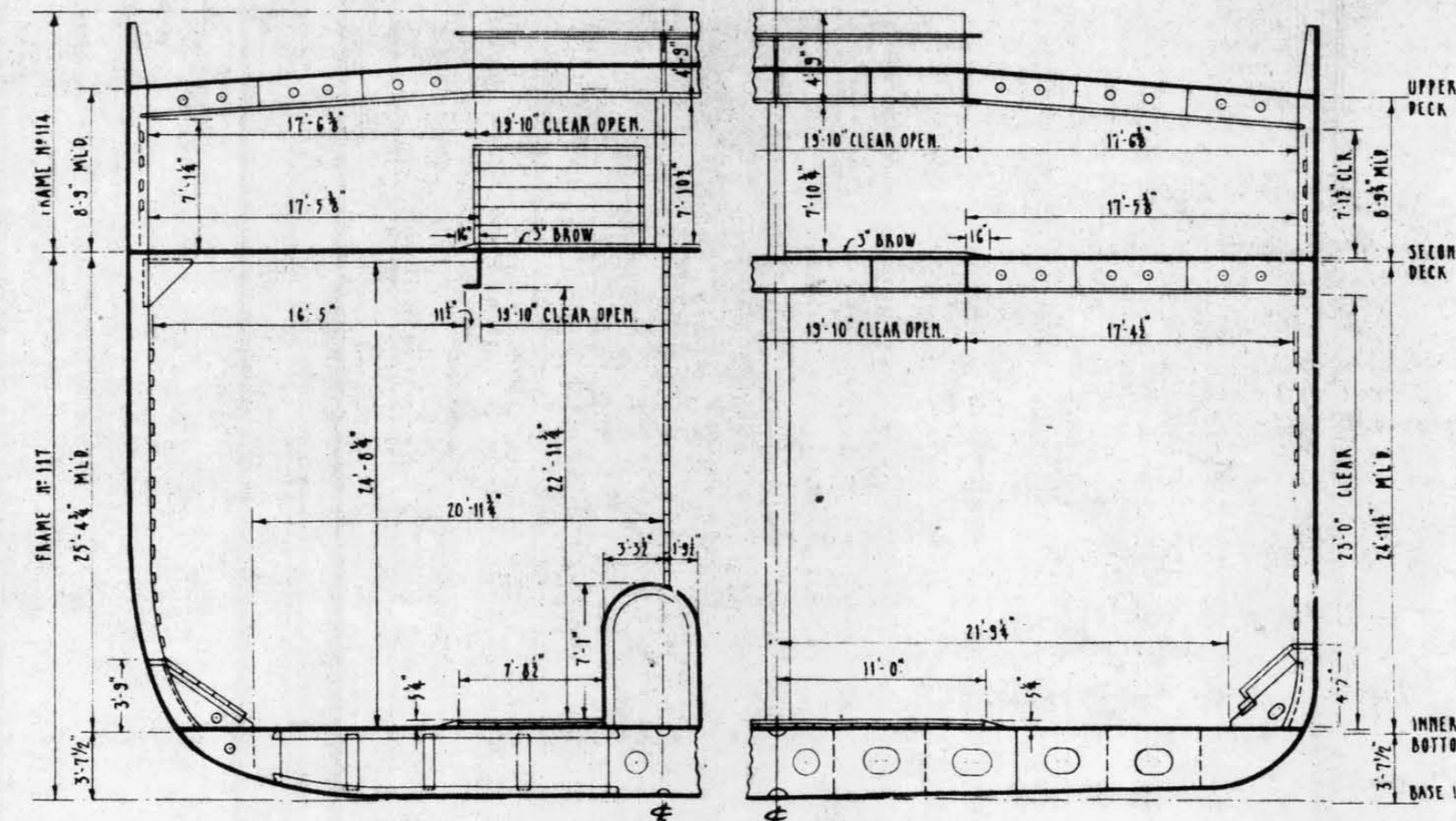
SECT. - FR. 140  
LOOKING FORD  
FORD END N° 5 HATCH

SECT. - FR. 114-117  
LOOKING AFT  
FORD END N° 4 HATCH

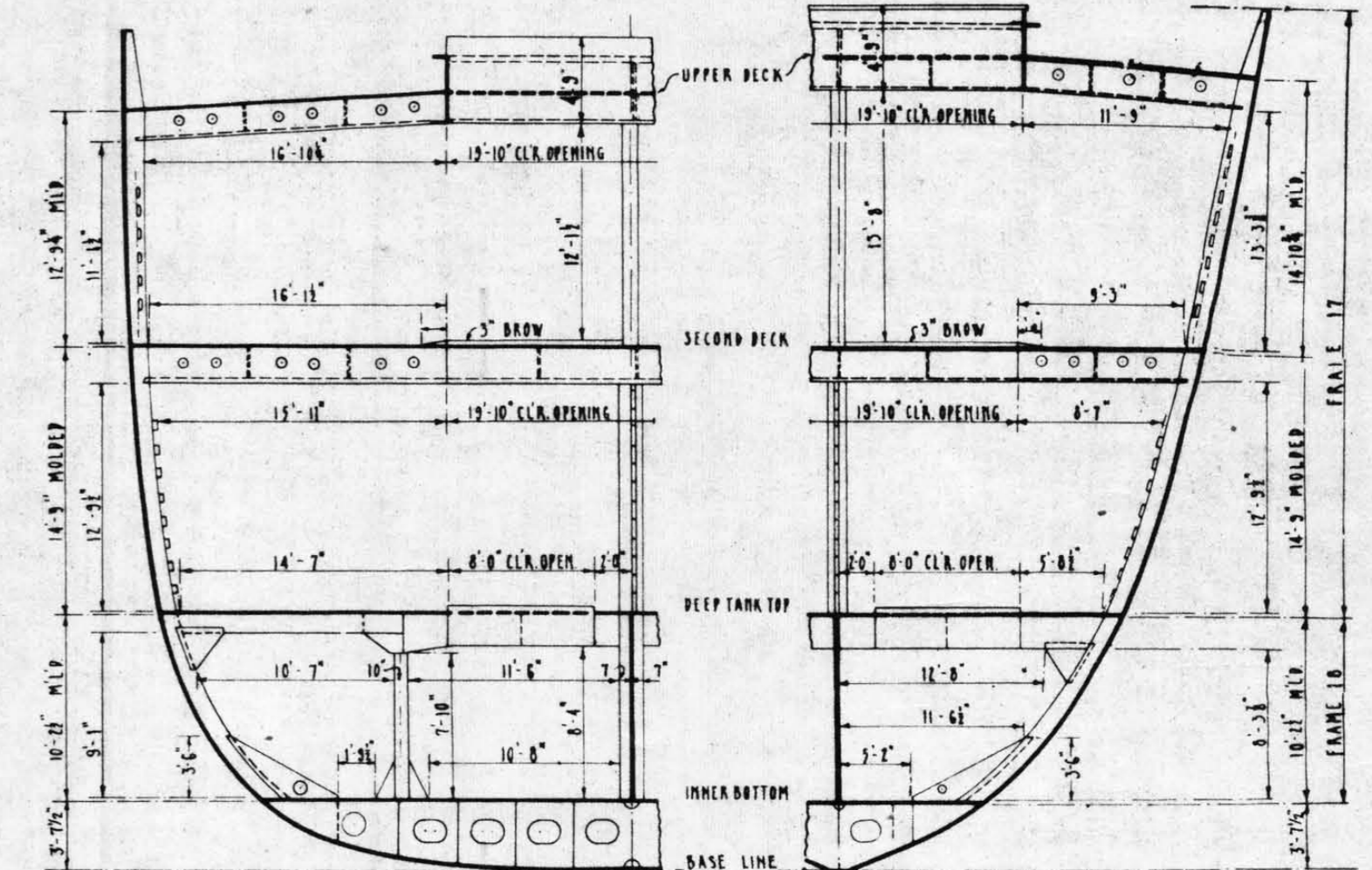


SECT. - FR. 60  
LOOKING AFT  
AFT END N° 2 HATCH

SECT. - FR. 46  
LOOKING FORD  
FORD END N° 2 HATCH



SECT. - FR. 82  
LOOKING FORD  
AFT END N° 3 HATCH

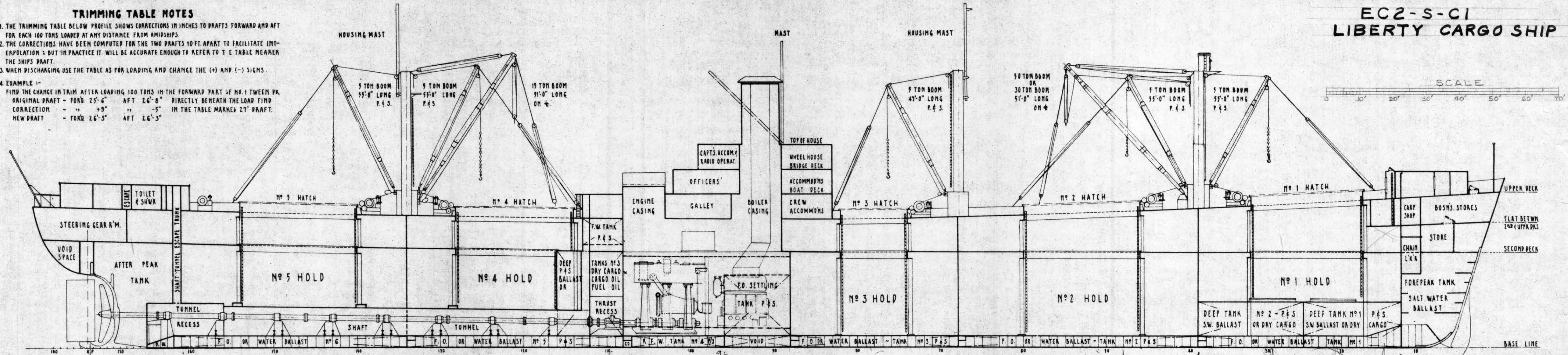


SECT. - FR. 32  
LOOKING AFT  
AFT END N° 1 HATCH

SECT. - FR. 17-18  
LOOKING FORD  
FORD END N° 1 HATCH

# TRIMMING TABLE NOTES

1. THE TRIMMING TABLE BELOW PROFILE SHOWS CORRECTIONS IN INCHES TO DRAFTS FORWARD AND AFT FOR EACH 100 TONS LOADED AT ANY DISTANCE FROM AMIDSHIPS.
2. THE CORRECTIONS HAVE BEEN COMPUTED FOR THE TWO DRAFTS 10 FT. APART TO FACILITATE INTERPOLATION - BUT IN PRACTICE IT WILL BE ACCURATE ENOUGH TO REFER TO THE TABLE NEAREST THE SHIP'S DRAFT.
3. WHEN DISCHARGING USE THE TABLE AS FOR LOADING AND CHANGE THE (+) AND (-) SIGNS.
4. EXAMPLE :-  
FIND THE CHANGE IN TRIM AFTER LOADING 100 TONS IN THE FORWARD PART OF NO. 1 TWEEN DECK.  
ORIGINAL DRAFT - FWD 25'-6" AFT 26'-8" DIRECTLY BENEATH THE LOAD FIND  
CORRECTION - " +9" " -5" IN THE TABLE MARKED 27' DRAFT.  
NEW DRAFT - FWD 26'-3" AFT 26'-3"



## EC2-S-C1 LIBERTY CARGO SHIP

SCALE  
0 10' 20' 30' 40' 50' 60' 70'

TRIMMING TABLE	27 FT. DRAFT	DRAFT																																		27 FT. DRAFT	TRIMMING TABLE																																																																																																																																																																																																																																																																																																																																																																																																																																																																																																																																																																																																																																																																																																																																																																																																																																																																																																																																																																																																																																																																																																												
		AFT																																																																																																																																																																																																																																																																																																																																																																																																																																																																																																																																																																																																																																																																																																																																																																																																																																																																																																																																																																																																																																																																																																																																															
		- 6.4	- 6.0	- 5.6	- 5.2	- 4.9	- 4.5	- 4.1	- 3.7	- 3.3	- 3.0	- 2.6	- 2.2	- 1.8	- 1.4	- 1.1	- 0.7	- 0.3	+ 0.1	+ 0.5	+ 0.8	+ 1.2	+ 1.6	+ 2.0	+ 2.3	+ 2.7	+ 3.1	+ 3.5	+ 3.9	+ 4.3	+ 4.6	+ 5.0	+ 5.4	+ 5.8	+ 6.2	+ 6.5	+ 6.9	+ 7.3	+ 7.7	+ 8.1	+ 8.4	+ 8.8	+ 9.2	+ 9.6	+ 10.0	FWD	27 FT. DRAFT																																																																																																																																																																																																																																																																																																																																																																																																																																																																																																																																																																																																																																																																																																																																																																																																																																																																																																																																																																																																																																																																																																		
		+ 1.0	+ 1.2	+ 1.6	+ 1.4	+ 1.0	+ 0.6	+ 0.3	+ 0.7	+ 1.1	+ 1.5	+ 1.9	+ 2.3	+ 2.7	+ 3.1	+ 3.5	+ 3.9	+ 4.3	+ 4.7	+ 5.1	+ 5.5	+ 5.9	+ 6.3	+ 6.7	+ 7.1	+ 7.5	+ 7.9	+ 8.3	+ 8.7	+ 9.1	+ 9.5	+ 9.9	+ 10.3	+ 10.7	+ 11.1	+ 11.5	+ 11.9	+ 12.3	+ 12.7	+ 13.1	+ 13.5	+ 13.9	+ 14.3	+ 14.7	+ 15.1	+ 15.5	+ 15.9	+ 16.3	+ 16.7	+ 17.1	+ 17.5	+ 17.9	+ 18.3	+ 18.7	+ 19.1	+ 19.5	+ 19.9	+ 20.3	+ 20.7	+ 21.1	+ 21.5	+ 21.9	+ 22.3	+ 22.7	+ 23.1	+ 23.5	+ 23.9	+ 24.3	+ 24.7	+ 25.1	+ 25.5	+ 25.9	+ 26.3	+ 26.7	+ 27.1	+ 27.5	+ 27.9	+ 28.3	+ 28.7	+ 29.1	+ 29.5	+ 29.9	+ 30.3	+ 30.7	+ 31.1	+ 31.5	+ 31.9	+ 32.3	+ 32.7	+ 33.1	+ 33.5	+ 33.9	+ 34.3	+ 34.7	+ 35.1	+ 35.5	+ 35.9	+ 36.3	+ 36.7	+ 37.1	+ 37.5	+ 37.9	+ 38.3	+ 38.7	+ 39.1	+ 39.5	+ 39.9	+ 40.3	+ 40.7	+ 41.1	+ 41.5	+ 41.9	+ 42.3	+ 42.7	+ 43.1	+ 43.5	+ 43.9	+ 44.3	+ 44.7	+ 45.1	+ 45.5	+ 45.9	+ 46.3	+ 46.7	+ 47.1	+ 47.5	+ 47.9	+ 48.3	+ 48.7	+ 49.1	+ 49.5	+ 49.9	+ 50.3	+ 50.7	+ 51.1	+ 51.5	+ 51.9	+ 52.3	+ 52.7	+ 53.1	+ 53.5	+ 53.9	+ 54.3	+ 54.7	+ 55.1	+ 55.5	+ 55.9	+ 56.3	+ 56.7	+ 57.1	+ 57.5	+ 57.9	+ 58.3	+ 58.7	+ 59.1	+ 59.5	+ 59.9	+ 60.3	+ 60.7	+ 61.1	+ 61.5	+ 61.9	+ 62.3	+ 62.7	+ 63.1	+ 63.5	+ 63.9	+ 64.3	+ 64.7	+ 65.1	+ 65.5	+ 65.9	+ 66.3	+ 66.7	+ 67.1	+ 67.5	+ 67.9	+ 68.3	+ 68.7	+ 69.1	+ 69.5	+ 69.9	+ 70.3	+ 70.7	+ 71.1	+ 71.5	+ 71.9	+ 72.3	+ 72.7	+ 73.1	+ 73.5	+ 73.9	+ 74.3	+ 74.7	+ 75.1	+ 75.5	+ 75.9	+ 76.3	+ 76.7	+ 77.1	+ 77.5	+ 77.9	+ 78.3	+ 78.7	+ 79.1	+ 79.5	+ 79.9	+ 80.3	+ 80.7	+ 81.1	+ 81.5	+ 81.9	+ 82.3	+ 82.7	+ 83.1	+ 83.5	+ 83.9	+ 84.3	+ 84.7	+ 85.1	+ 85.5	+ 85.9	+ 86.3	+ 86.7	+ 87.1	+ 87.5	+ 87.9	+ 88.3	+ 88.7	+ 89.1	+ 89.5	+ 89.9	+ 90.3	+ 90.7	+ 91.1	+ 91.5	+ 91.9	+ 92.3	+ 92.7	+ 93.1	+ 93.5	+ 93.9	+ 94.3	+ 94.7	+ 95.1	+ 95.5	+ 95.9	+ 96.3	+ 96.7	+ 97.1	+ 97.5	+ 97.9	+ 98.3	+ 98.7	+ 99.1	+ 99.5	+ 99.9	+ 100.3	+ 100.7	+ 101.1	+ 101.5	+ 101.9	+ 102.3	+ 102.7	+ 103.1	+ 103.5	+ 103.9	+ 104.3	+ 104.7	+ 105.1	+ 105.5	+ 105.9	+ 106.3	+ 106.7	+ 107.1	+ 107.5	+ 107.9	+ 108.3	+ 108.7	+ 109.1	+ 109.5	+ 109.9	+ 110.3	+ 110.7	+ 111.1	+ 111.5	+ 111.9	+ 112.3	+ 112.7	+ 113.1	+ 113.5	+ 113.9	+ 114.3	+ 114.7	+ 115.1	+ 115.5	+ 115.9	+ 116.3	+ 116.7	+ 117.1	+ 117.5	+ 117.9	+ 118.3	+ 118.7	+ 119.1	+ 119.5	+ 119.9	+ 120.3	+ 120.7	+ 121.1	+ 121.5	+ 121.9	+ 122.3	+ 122.7	+ 123.1	+ 123.5	+ 123.9	+ 124.3	+ 124.7	+ 125.1	+ 125.5	+ 125.9	+ 126.3	+ 126.7	+ 127.1	+ 127.5	+ 127.9	+ 128.3	+ 128.7	+ 129.1	+ 129.5	+ 129.9	+ 130.3	+ 130.7	+ 131.1	+ 131.5	+ 131.9	+ 132.3	+ 132.7	+ 133.1	+ 133.5	+ 133.9	+ 134.3	+ 134.7	+ 135.1	+ 135.5	+ 135.9	+ 136.3	+ 136.7	+ 137.1	+ 137.5	+ 137.9	+ 138.3	+ 138.7	+ 139.1	+ 139.5	+ 139.9	+ 140.3	+ 140.7	+ 141.1	+ 141.5	+ 141.9	+ 142.3	+ 142.7	+ 143.1	+ 143.5	+ 143.9	+ 144.3	+ 144.7	+ 145.1	+ 145.5	+ 145.9	+ 146.3	+ 146.7	+ 147.1	+ 147.5	+ 147.9	+ 148.3	+ 148.7	+ 149.1	+ 149.5	+ 149.9	+ 150.3	+ 150.7	+ 151.1	+ 151.5	+ 151.9	+ 152.3	+ 152.7	+ 153.1	+ 153.5	+ 153.9	+ 154.3	+ 154.7	+ 155.1	+ 155.5	+ 155.9	+ 156.3	+ 156.7	+ 157.1	+ 157.5	+ 157.9	+ 158.3	+ 158.7	+ 159.1	+ 159.5	+ 159.9	+ 160.3	+ 160.7	+ 161.1	+ 161.5	+ 161.9	+ 162.3	+ 162.7	+ 163.1	+ 163.5	+ 163.9	+ 164.3	+ 164.7	+ 165.1	+ 165.5	+ 165.9	+ 166.3	+ 166.7	+ 167.1	+ 167.5	+ 167.9	+ 168.3	+ 168.7	+ 169.1	+ 169.5	+ 169.9	+ 170.3	+ 170.7	+ 171.1	+ 171.5	+ 171.9	+ 172.3	+ 172.7	+ 173.1	+ 173.5	+ 173.9	+ 174.3	+ 174.7	+ 175.1	+ 175.5	+ 175.9	+ 176.3	+ 176.7	+ 177.1	+ 177.5	+ 177.9	+ 178.3	+ 178.7	+ 179.1	+ 179.5	+ 179.9	+ 180.3	+ 180.7	+ 181.1	+ 181.5	+ 181.9	+ 182.3	+ 182.7	+ 183.1	+ 183.5	+ 183.9	+ 184.3	+ 184.7	+ 185.1	+ 185.5	+ 185.9	+ 186.3	+ 186.7	+ 187.1	+ 187.5	+ 187.9	+ 188.3	+ 188.7	+ 189.1	+ 189.5	+ 189.9	+ 190.3	+ 190.7	+ 191.1	+ 191.5	+ 191.9	+ 192.3	+ 192.7	+ 193.1	+ 193.5	+ 193.9	+ 194.3	+ 194.7	+ 195.1	+ 195.5	+ 195.9	+ 196.3	+ 196.7	+ 197.1	+ 197.5	+ 197.9	+ 198.3	+ 198.7	+ 199.1	+ 199.5	+ 199.9	+ 200.3	+ 200.7	+ 201.1	+ 201.5	+ 201.9	+ 202.3	+ 202.7	+ 203.1	+ 203.5	+ 203.9	+ 204.3	+ 204.7	+ 205.1	+ 205.5	+ 205.9	+ 206.3	+ 206.7	+ 207.1	+ 207.5	+ 207.9	+ 208.3	+ 208.7	+ 209.1	+ 209.5	+ 209.9	+ 210.3	+ 210.7	+ 211.1	+ 211.5	+ 211.9	+ 212.3	+ 212.7	+ 213.1	+ 213.5	+ 213.9	+ 214.3	+ 214.7	+ 215.1	+ 215.5	+ 215.9	+ 216.3	+ 216.7	+ 217.1	+ 217.5	+ 217.9	+ 218.3	+ 218.7	+ 219.1	+ 219.5	+ 219.9	+ 220.3	+ 220.7	+ 221.1	+ 221.5	+ 221.9	+ 222.3	+ 222.7	+ 223.1	+ 223.5	+ 223.9	+ 224.3	+ 224.7	+ 225.1	+ 225.5	+ 225.9	+ 226.3	+ 226.7	+ 227.1	+ 227.5	+ 227.9	+ 228.3	+ 228.7	+ 229.1	+ 229.5	+ 229.9	+ 230.3	+ 230.7	+ 231.1	+ 231.5	+ 231.9	+ 232.3	+ 232.7	+ 233.1	+ 233.5	+ 233.9	+ 234.3	+ 234.7	+ 235.1	+ 235.5	+ 235.9	+ 236.3	+ 236.7	+ 237.1	+ 237.5	+ 237.9	+ 238.3	+ 238.7	+ 239.1	+ 239.5	+ 239.9	+ 240.3	+ 240.7	+ 241.1	+ 241.5	+ 241.9	+ 242.3	+ 242.7	+ 243.1	+ 243.5	+ 243.9	+ 244.3	+ 244.7	+ 245.1	+ 245.5	+ 245.9	+ 246.3	+ 246.7	+ 247.1	+ 247.5	+ 247.9	+ 248.3	+ 248.7	+ 249.1	+ 249.5	+ 249.9	+ 250.3	+ 250.7	+ 251.1	+ 251.5	+ 251.9	+ 252.3	+ 252.7	+ 253.1	+ 253.5	+ 253.9	+ 254.3	+ 254.7	+ 255.1	+ 255.5	+ 255.9	+ 256.3	+ 256.7	+ 257.1	+ 257.5	+ 257.9	+ 258.3	+ 258.7	+ 259.1	+ 259.5	+ 259.9	+ 260.3	+ 260.7	+ 261.1	+ 261.5	+ 261.9	+ 262.3	+ 262.7	+ 263.1	+ 263.5	+ 263.9	+ 264.3	+ 264.7	+ 265.1	+ 265.5	+ 265.9	+ 266.3	+ 266.7	+ 267.1	+ 267.5	+ 267.9	+ 268.3	+ 268.7	+ 269.1	+ 269.5	+ 269.9	+ 270.3	+ 270.7	+ 271.1	+ 271.5	+ 271.9	+ 272.3	+ 272.7	+ 273.1	+ 273.5	+ 273.9	+ 274.3	+ 274.7	+ 275.1	+ 275.5	+ 275.9	+ 276.3	+ 276.7	+ 277.1	+ 277.5	+ 277.9	+ 278.3	+ 278.7	+ 279.1	+ 279.5	+ 279.9	+ 280.3	+ 280.7	+ 281.1	+ 281.5	+ 281.9	+ 282.3	+ 282.7	+ 283.1	+ 283.5	+ 283.9	+ 284.3	+ 284.7	+ 285.1	+ 285.5	+ 285.9	+ 286.3	+ 286.7	+ 287.1	+ 287.5	+ 287.9	+ 288.3	+ 288.7	+ 289.1	+ 289.5	+ 289.9	+ 290.3	+ 290.7	+ 291.1	+ 291.5	+ 291.9	+ 292.3	+ 292.7	+ 293.1	+ 293.5	+ 293.9	+ 294.3	+ 294.7	+ 295.1	+ 295.5	+ 295.9	+ 296.3	+ 296.7	+ 297.1	+ 297.5	+ 297.9	+ 298.3	+ 298.7	+ 299.1	+ 299.5	+ 299.9	+ 300.3	+ 300.7	+ 301.1	+ 301.5	+ 301.9	+ 302.3	+ 302.7	+ 303.1	+ 303.5	+ 303.9	+ 304.3	+ 304.7	+ 305.1	+ 305.5	+ 305.9	+ 306.3	+ 306.7	+ 307.1	+ 307.5	+ 307.9	+ 308.3	+ 308.7	+ 309.1	+ 309.5	+ 309.9	+ 310.3	+ 310.7	+ 311.1	+ 311.5	+ 311.9	+ 312.3	+ 312.7	+ 313.1	+ 313.5	+ 313.9	+ 314.3	+ 314.7	+ 315.1	+ 315.5	+ 315.9	+ 316.3	+ 316.7	+ 317.1	+ 317.5	+ 317.9	+ 318.3	+ 318.7	+ 319.1	+ 319.5	+ 319.9	+ 320.3	+ 320.7	+ 321.1	+ 321.5	+ 321.9	+ 322.3	+ 322.7	+ 323.1	+ 323.5	+ 323.9	+ 324.3	+ 324.7	+ 325.1	+ 325.5	+ 325.9	+ 326.3	+ 326.7	+ 327.1	+ 327.5	+ 327.9	+ 328.3	+ 328.7	+ 329.1	+ 329.5	+ 329.9	+ 330.3	+ 330.7	+ 331.1	+ 331.5	+ 331.9	+ 332.3	+ 332.7	+ 333.1	+ 333.5	+ 333.9	+ 334.3	+ 334.7	+ 335.1	+ 335.5	+ 335.9	+ 336.3	+ 336.7	+ 337.1	+ 337.5	+ 337.9	+ 338.3	+ 338.7	+ 339.1	+ 339.5	+ 339.9	+ 340.3	+ 340.7	+ 341.1	+ 341.5	+ 341.9	+ 342.3	+ 342.7	+ 343.1	+ 343.5	+ 343.9	+ 344.3	+ 344.7	+ 345.1	+ 345.5	+ 345.9	+ 346.3	+ 346.7	+ 347.1	+ 347.5	+ 347.9	+ 348.3	+ 348.7	+ 349.1	+ 349.5	+ 349.9	+ 350.3	+ 350.7	+ 351.1	+ 351.5	+ 351.9	+ 352.3	+ 352.7	+ 353.1	+ 353.5	+ 353.9	+ 354.3	+ 354.7	+ 355.1	+ 355.5	+ 355.9	+ 356.3	+ 356.7	+ 357.1	+ 357.5	+ 357.9	+ 358.3	+ 358.7	+ 359.1	+ 359.5	+ 359.9	+ 360.3	+ 360.7	+ 361.1	+ 361.5	+ 361.9	+ 362.3	+ 362.7	+ 363.1	+ 363.5	+ 363.9	+ 364.3	+ 364.7	+ 365.1	+ 365.5	+ 365.9	+ 366.3	+ 366.7	+ 367.1	+ 367.5	+ 367.9	+ 368.3	+ 368.7	+ 369.1	+ 369.5	+ 369.9	+ 370.3	+ 370.7	+ 371.1	+ 371.5	+ 371.9	+ 372.3	+ 372.7	+ 373.1	+ 373.5	+ 373.9	+ 374.3	+ 374.7	+ 375.1	+ 375.5	+ 375.9	+ 376.3	+ 376.7	+ 377.1	+ 377.5	+ 377.9	+ 378.3	+ 378.7	+ 379.1	+ 379.5	+ 379.9	+ 380.3	+ 380.7	+ 381.1	+ 381.5	+ 381.9	+ 382.3	+ 382.7	+ 383.1	+ 383.5	+ 383.9	+ 384.3	+ 384.7	+ 385.1	+ 385.5	+ 385.9	+ 386.3	+ 386.7	+ 387.1	+ 387.5	+ 387.9	+ 388.3	+ 388.7	+ 389.1	+ 389.5	+ 389.9	+ 390.3	+ 390.7	+ 391.1	+ 391.5	+ 391.9	+ 392.3	+ 392.7	+ 393.1	+ 393.5	+ 393.9	+ 394.3	+ 394.7	+ 395.1	+ 395.5	+ 395.9	+ 396.3	+ 396.7	+ 397.1	+ 397.5	+ 397.9	+ 398.3	+ 398.7	+ 399.1	+ 399.5	+ 399.9	+ 400.3	+ 400.7	+ 401.1	+ 401.5	+ 401.9	+ 402.3	+ 402.7	+ 403.1	+ 403.5	+ 403.9	+ 404.3	+ 404.7	+ 405.1	+ 405.5	+ 405.9	+ 406.3	+ 406.7	+ 407.1	+ 407.5	+ 407.9	+ 408.3	+ 408.7	+ 409.1	+ 409.5	+ 409.9	+ 410.3	+ 410.7	+ 411.1	+ 411.5	+ 411.9	+ 412.3	+ 412.7	+ 413.1	+ 413.5	+ 413.9	+ 414.3	+ 414.7	+ 415.1	+ 415.5	+ 415.9	+ 416.3	+ 416.7	+ 417.1	+ 417.5	+ 417.9	+ 418.3	+ 418.7	+ 419.1	+ 419.5	+ 419.9	+ 420.3	+ 420.7	+ 421.1	+ 421.5	+ 421.9	+ 422.3	+ 422.7	+ 423.1	+ 423.5	+ 423.9	+ 424.3	+ 424.7	+ 425.1	+ 425.5	+ 425.9	+ 426.3	+ 426.7	+ 427.1	+ 427.5	+ 427.9	+ 428.3	+ 428.7	+ 429.1	+ 429.5	+ 429.9	+ 430.3	+ 430.7	+ 431.1	+ 431.5	+ 431.9	+ 432.3	+ 432.7	+ 433.1	+ 433.5	+ 433.9	+ 434.3	+ 434.7	+ 435.1	+ 435.5	+ 435.9	+ 436.3	+ 436.7	+ 437.1	+ 437.5	+ 437.9	+ 438.3	+ 438.7	+ 439.1

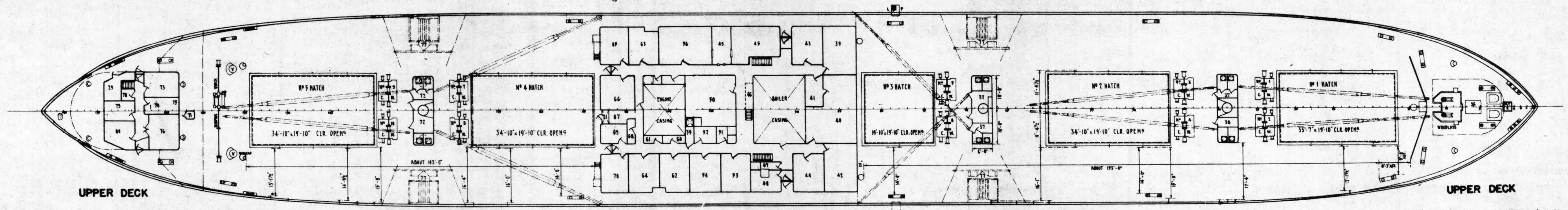
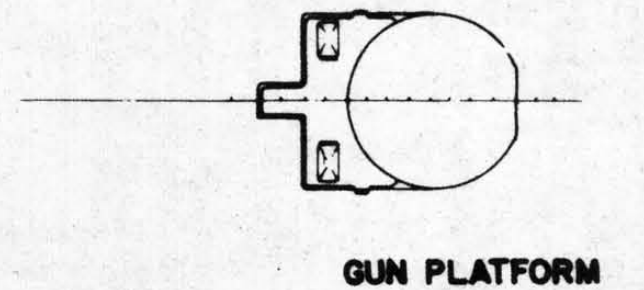
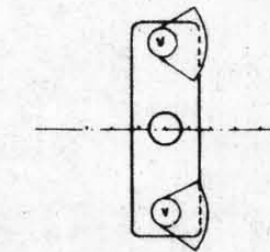
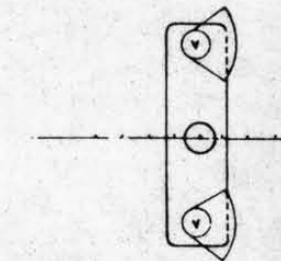
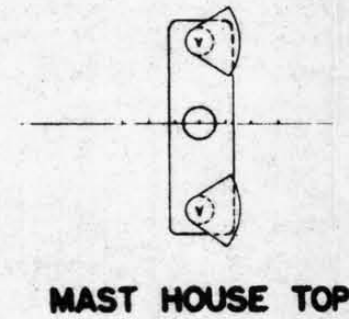
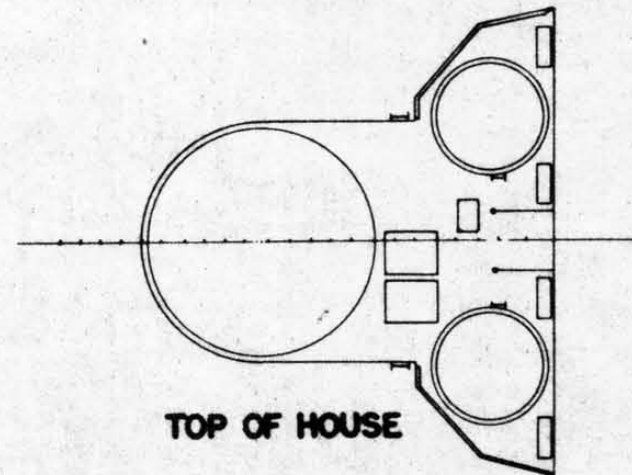
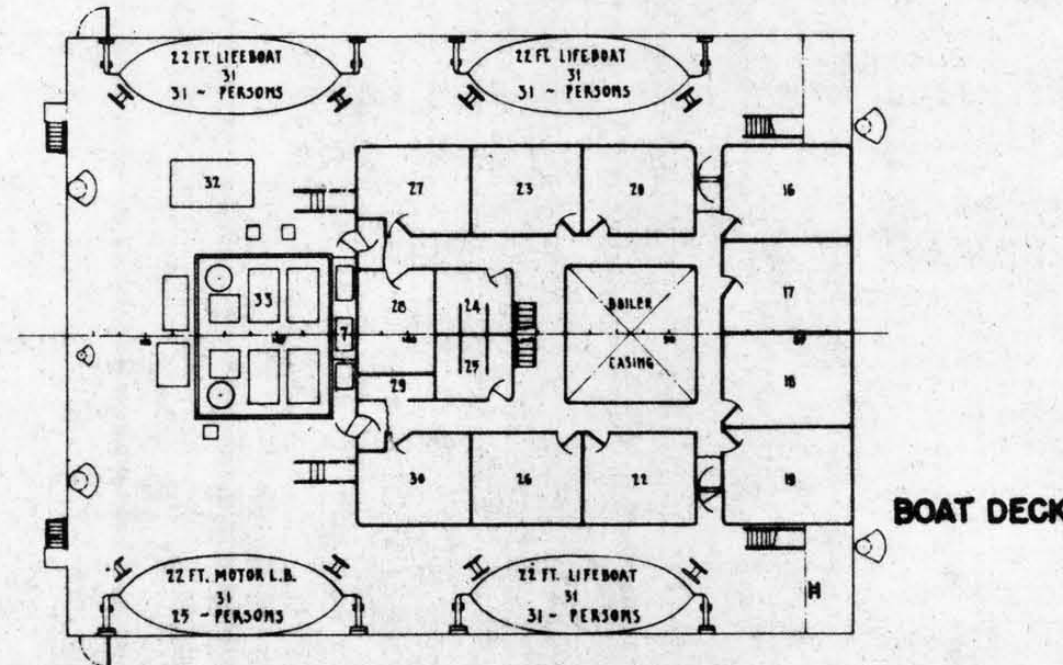
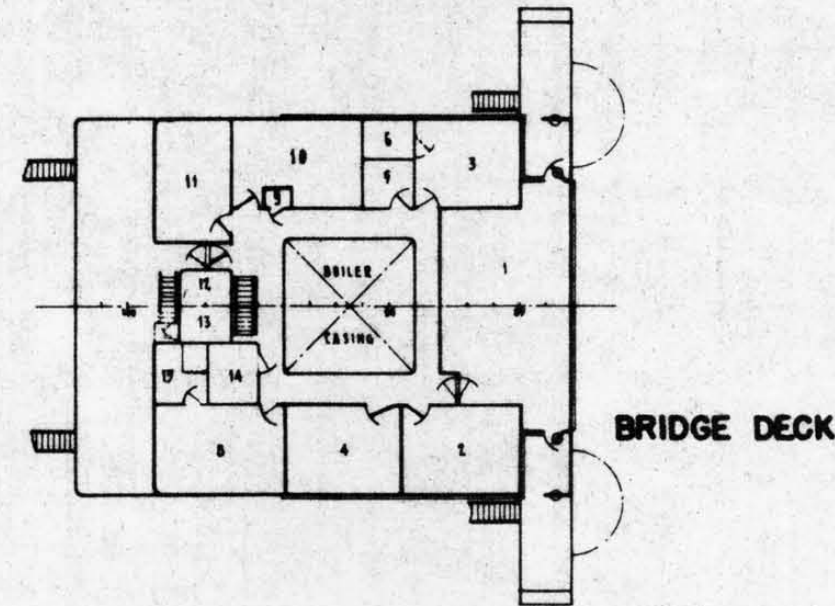
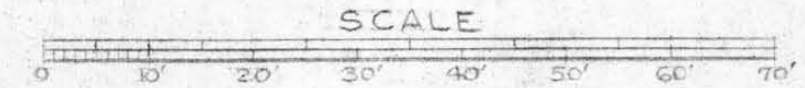
FRESH WATER			
TANK	GALS.	TONS-36	TONS-20
RESERVE FEED - NO. 4P	17855	66	
RESERVE FEED - NO. 4S	17855	66	
FRESH WATER - FR. 100-113P	7541	28	
FRESH WATER - FR. 100-113S	7541	28	
<b>TOTAL</b>	<b>50792</b>	<b>188</b>	
STORES			
COMPARTMENT	CU. FT.		
BOYS' STORES ON SECOND DECK - F.P. TO FR. 112	3034		
BOYS' STORES ON FLAT DECK 2ND & UPPER DECKS	3492		
CABIN STORES - SECOND DECK - FR. 88 TO 106	4329		
LINEN LOCKER	585		
BONDED STORES	186		
REFRIGERATED STORES :-			
MEAT	801		
FISH	173		
VEGETABLES	768		
DAIRY	176		

WATER BALLAST			
TANK	CU. FEET	TONS-35	TONS-20
*FORE PEAK	5073	145	
WATER BALLAST			
NO. 1	5029	144	
NO. 2P	5967	170	
NO. 2S	5923	169	
NO. 3P	4400	126	
NO. 3S	4400	126	
NO. 5P	4391	125	
NO. 5S	4391	125	
NO. 6	4118	118	
*AFTER PEAK	5438	155	
DEEP TANKS			
NO. 1P	3973	114	
NO. 1S	3973	114	
NO. 2P	7340	210	
NO. 2S	7340	210	
NO. 3P	13540	387	
NO. 3S	13065	373	
<b>TOTAL</b>	<b>98361</b>	<b>2811</b>	
*PIPED FOR FRESH WATER ON SOME SHIPS.			

CARGO			
COMPARTMENT	GRAIN CAP.-FT.	BALE CAP.-FT.	
HOLD NO. 1	41257	36083	
TWEEN DECKS	42924	39322	
HOLD NO. 2	98860	92008	
TWEEN DECKS	46744	42630	
HOLD NO. 3	60459	53793	
TWEEN DECKS	27970	23904	
HOLD NO. 4	58841	52574	
TWEEN DECKS	35277	29689	
HOLD NO. 5	58620	51571	
TWEEN DECKS	34570	30864	
DEEP TANKS			
NO. 1P	3639	2729	
NO. 1S	3639	3004	
NO. 2P	7473	5294	
NO. 2S	7473	5579	
NO. 3P	13674	12506	
NO. 3S	13188	12024	
<b>TOTAL</b>	<b>562608</b>	<b>499573</b>	

CARGO OIL OR FUEL OIL			
TANK	GALS.	TONS-32.25	TONS-20
CARGO OIL OR FUEL OIL - DEEP TANK NO. 3P	99257	356	
DEEP TANK NO. 3S	95772	344	
<b>TOTAL</b>	<b>195029</b>	<b>700</b>	
FUEL OIL			
TANK	GALS.	TONS-32.25	TONS-20
F.O. SETTLING TANK FR. 88-96P	14083	51	
F.O. SETTLING TANK FR. 88-96S	14083	51	
<b>TOTAL</b>	<b>28166</b>	<b>102</b>	
FUEL OIL TANK NO. 1	36863	132	
FUEL OIL TANK NO. 2P	43742	157	
FUEL OIL TANK NO. 2S	43417	156	
FUEL OIL TANK NO. 3P	32251	116	
FUEL OIL TANK NO. 3S	32251	116	
FUEL OIL TANK NO. 5P	32185	116	
FUEL OIL TANK NO. 5S	32185	116	
FUEL OIL TANK NO. 6	30183	109	
<b>TOTAL</b>	<b>283077</b>	<b>1017</b>	
<b>TOTAL (ALL FUEL OIL)</b>	<b>506722</b>	<b>1819</b>	

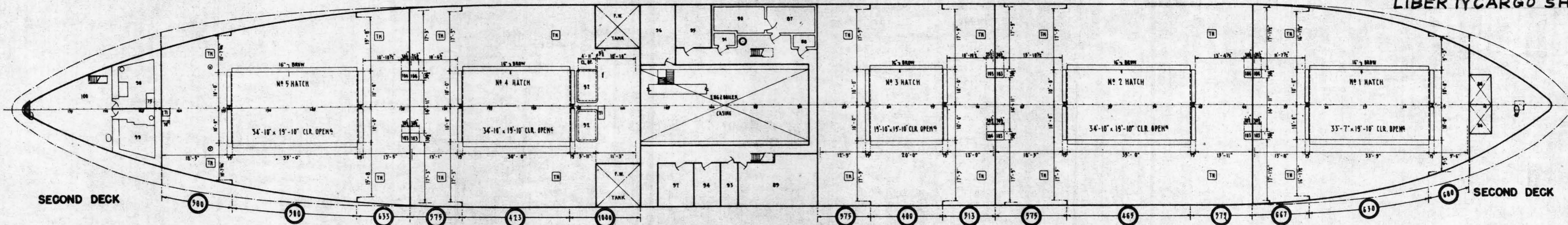
EC2-S-C1  
LIBERTY CARGO SHIP



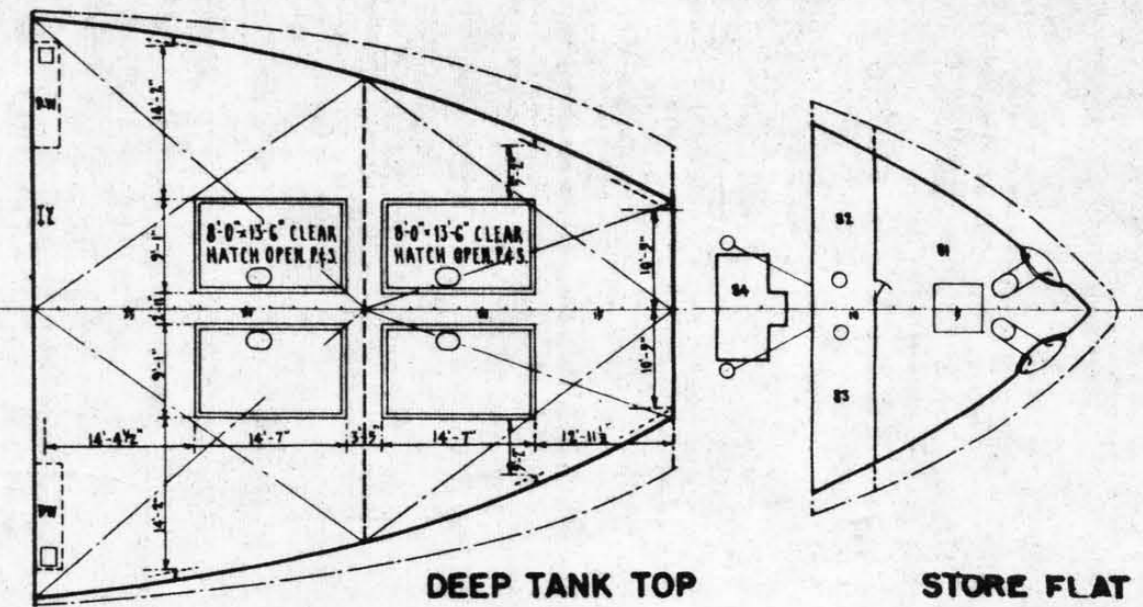
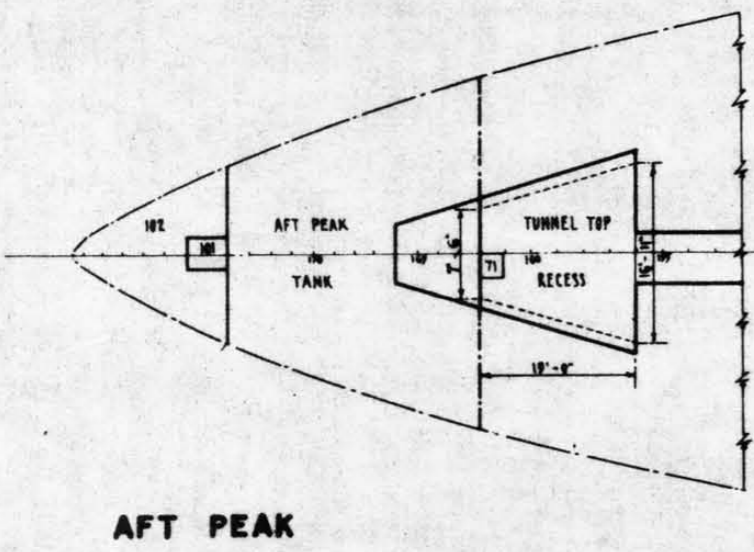
UNIT DECK LOAD FOR UPPER DECK—LBS. PER SQ. FT.—336

BUSHIPS CODE 460

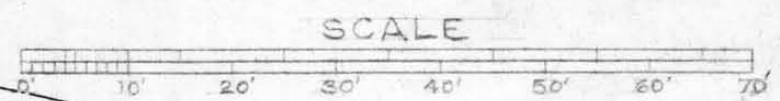
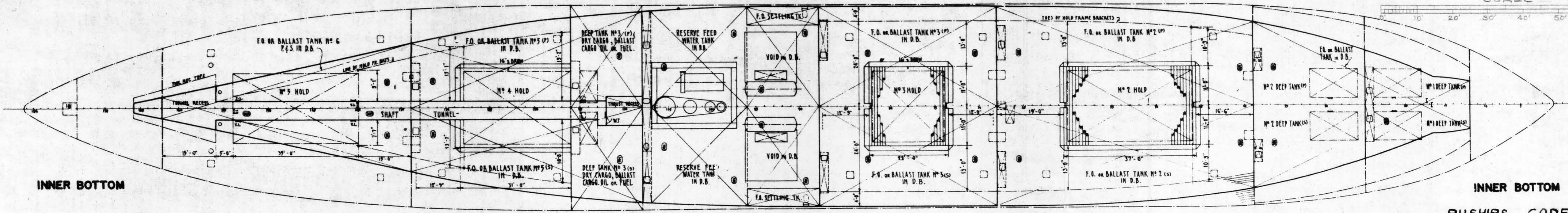
EC2-S-C1  
LIBERTY CARGO SHIP



NOTE: THE ABOVE FIGURES IN (N) GIVE UNIT DECK LOADS IN POUNDS PER SQ. FT. AND APPLY FROM SIDE TO SIDE OF VESSEL INCLUDING HATCHES.



UNIT DECK LOAD FOR DEEP TANK TOP ..... 1400  
UNIT DECK LOAD FOR TUNNEL TOP RECESS ..... 1690  
UNIT DECK LOAD FOR TANK TOPS ..... 1690



BUSHIPS CODE 460

# LEGEND

Nº	TITLE	Nº	TITLE
1	WHEELHOUSE	54	3 SEAMEN - 1 MOUNT MAN
2	CHART ROOM	55	CLEANING GEAR LAR.
3	RADIO ROOM	56	CATERS MESS
4	CAPTAINS OFFICE	57	STEWARDS TOILET
5	TOILET	58	STEWARDS SHOWER
6	BATTERY ROOM	59	FOOT BATH
7	GALLEY SKYLIGHT	60	ENG. DEPT. TOILET
8	CAPTAINS S.R.	61	ENG. DEPT. SPOONERS
9	RISKSUM LOCKER	62	5 SEAMEN - 1 SPARE
10	2 CADETS - DECK DEPT.	63	1 M. ENG. 2 WORKERS - 1 SPARE
11	CHIEF RADIO OPER.	64	3 SEAMEN - 1 SPARE
12	MOTOR GEAR RM.	65	5 FIREMEN - 1 SPARE
13	DECK LAR.	66	2 MESSMEN - 2 VIKING MEN
14	BUNDED STORES	67	SLEEP CHEST
15	CAPTAINS BATH	68	SPARE TOILET
16	CHIEF ENGINE OFFICE	69	SHIPS OFFICE
17	CHIEF ENGINE S.R.	70	BATH & CLOTH TYPIST
18	1ST ASST. ENGR.	71	SHAFT ALLEY ESCAPE TROUK
19	CHIEF MATE	72	PAINT ROOM
20	2ND ASST. ENGR.	73	2 GUNNERS
21	FOOT HATCH	74	TOILET & SHOWER
22	3RD MATE	75	WT. TROUK - AMMUN. HOUSE
23	4TH ASST. ENGR.	76	HOSPITAL
24	OFFICERS SHOWERS	77	LIFE RAFT
25	OFFICERS TOILET	78	MEDICAL STORES
26	SPARE ROOM	79	2 GUNNERS
27	2ND MATE	80	2 GUNNERS
28	GUNNERY OFFICER	81	BOSMS STORES
29	LOCKER	82	LYMBER STOWAGE
30	2 CADETS - ENG. DEPT.	83	CARPENTER SHOP
31	LIFEBOAT	84	5 AMMUN. MAG.
32	POTATO LAR.	85	STORES
33	ENG. RM. SKYLIGHT	86	CRAB LAR.
34	DECK GEAR BOX	87	VEGETABLE RM.
35	LIFE JACKET BOX	88	DAIRY RM.
36	AMMUN. TROUK	89	DRY STORES
37	DECK GEAR LAR.	90	MEAT RM.
38	LAMP RM.	91	FISH RM.
39	6 GUNNERS	92	DRY CARGO & OIL TANK HATCH
40	OFFICERS MESS	93	CLUTCH LIVERY RM.
41	PAINTRY	94	SMILED LIVERY RM.
42	6 GUNNERS	95	COAL ROOM
43	STEWARD	96	ENGINEERS STORES
44	3 LOOKS - 1 MESSMAN	97	STOREROOM
45	P.O. MESS	98	SMALL ARMS MAG.
46	MEAT BLOCK & SINK	99	4 FIRED AMMUN. MAG.
47	DECK DEPT. SHOWERS	100	STEERING GEAR RM.
48	DECK DEPT. TOILETS	101	RUDDER TROUK
49	SCULLERY	102	VOID
50	GALLEY	103	VENT TROUK
51	P.O. SHOWERS	104	VENT ESCAPE TROUK
52	P.O. TOILETS	105	HYDROPHON TANK IN B2
53	5 SILERS	106	BATHROOM TANK IN B2
FW	CARGO WINCH	WTH	WATERTIGHT HATCH
WH	WHEEL	LP	LEADSMANS PLATFORM
TH	TRIMMING HATCH	AL	ACCOMMODATION LADDER
VL	VERTICAL LADDER	DB	DOUBLE BOTTOM
V	VENT	WW	WARPING WINCH

## CARGO WINCHES

CAPACITIES AND TYPE  
NINE 7" x 12" DOUBLE GEARED WINCHES FOR 5, 5 & 30 TON BOOMS  
ONE 10 1/2" x 12" DOUBLE GEARED WINCH FOR 50 TON BOOM

## MASTS

HEIGHTS OF MASTS ABOVE BOTTOM OF KEEL PLATE  
FOREMAST FR. Nº 39 82'-0 1/4"  
FIXED MAST FR. Nº 66 82'-0 1/4"  
FIXED MAST FR. Nº 134 82'-0 1/4"  
TELESCOPIC MAST FR. Nº 68 102'-0 1/4"  
TELESCOPIC MAST FR. Nº 134 102'-0 1/4"

## PRINCIPAL DIMENSIONS

L.O.A. 441'-6"  
L.B.P. (25'-3/4" W.L.) 416'-0"  
BREADTH MOLDED 56'-10 1/2"  
BREADTH EXTREME 57'-0"  
DEPTH TO UPPER DECK, MOLDED 37'-4"  
DEPTH TO SECOND DECK, MOLDED 28'-7"  
DRAFT 27'-8 1/2"

GROSS TONNAGE NET TONNAGE

U.S. 7191 4303  
PANAMA 7223 5023  
SUEZ 7230 5399

## MAIN ENGINE

DIRECT ACTING CONDENSING THREE CYLINDER TRIPLE EXP.  
ANSION ENGINE DEVELOPING 2500 H.P. AT 76 R.P.M.  
ENGINE SIZE 241'-37'-20" BY 40"  
RATED SPEED 11 KNOTS

## BOILERS

TWO MAIN BOILERS OF THE CROSS DRUM SECTIONAL SIM-  
UDOUS HEADERS STRAIGHT TUBE TYPE FITTED WITH SUP-  
ERHEATERS BURNING BUNKER "C" OIL  
BOILER PRESSURE - 220 P.S.I. BOILER TEMP. - 450° F.  
HEATING SURFACE (2 BOILERS) 10,254 SQ. FT.

## SPEED AND POWER CURVES

