

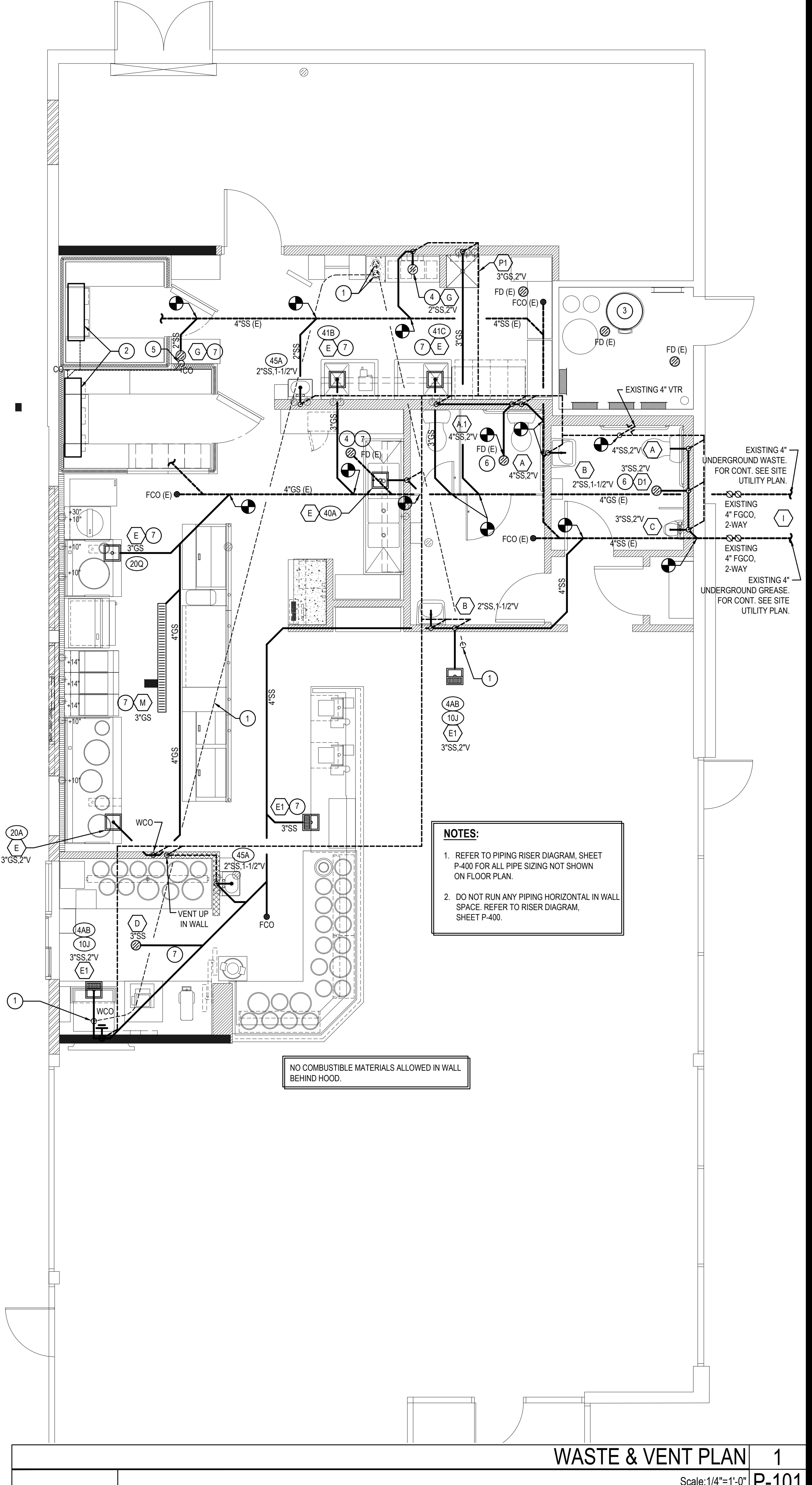
PLUMBING FIXTURE SCHEDULE				
A	TANK WATER CLOSET (HANDICAPPED): AMERICAN STANDARD 2467.016, FLUSH TANK WITH TRIP LEVER ON OPEN SIDE OF TOILET. FLOOR MOUNTED. STANDARD WHITE FINISHED. ELONGATED FRONT BOWL. PRESSURE ASSISTED 1.6 GPF. RIM 16 1/2" A.F.F. AM. STD. 5321.110 OPEN FRONT SEAT LESS COVER.			
A.1	TANK WATER CLOSET (HANDICAPPED): AMERICAN STANDARD 2462.016, FLUSH TANK WITH TRIP LEVER ON OPEN SIDE OF TOILET. FLOOR MOUNTED. STANDARD WHITE FINISHED. ELONGATED FRONT BOWL. PRESSURE ASSISTED 1.6 GPF. RIM 16 1/2" A.F.F. AM. STD. 4142.600 TANK COVER LOCKING DEVICE.			
B	LAVATORY (HANDICAPPED UNDER COUNTER): KOHLER MODEL K-2214-G-0, 18"x12" UNDER COUNTER MOUNT LAVATORY, VITREOUS CHINA. FAUCET BY TOTO, SELF-GENERATING ECOPOWER SYSTEM, LOW-FLOW SENSOR FAUCET SPOUT WITH THERMAL MIXER AND CONTROLLER, TEL101-D10ET WCP. INSULATE WATER AND WASTE PIPING UNDER LAVATORY WITH TRIBURO "HANDI-LAV-GUARD" #102 KIT. RI 3/4" A.F.F. TO RIM. PROVIDE & INSTALLED BY CONTRACTOR. CONTACT CHRISTINE.MCALEXANDER@HJCINC.COM			
C	AMERICAN STANDARD WASHBROOK 6590.525 0.125 GPF TOP SPUD URINAL WITH BATTERY OPERATED FLUSH VALVE.			
D	FLOOR DRAIN: ZURN # ZB415-B5 CAST IRON DRAIN WITH 5" ROUND POLISHED BRONZE TOP, MEMBRANE FLASHING CLAMP. PROVIDE 3" OUTLET WITH P-TRAP. CLEAN AND POLISH AFTER INSTALLATION. REFER TO DETAIL 17/P-500. PROVIDE TRAP PRIMER			
D1	FLOOR DRAIN: ZURN # ZB415-B5 CAST IRON DRAIN WITH 5" ROUND POLISHED BRONZE TOP, MEMBRANE FLASHING CLAMP. PROVIDE 3" OUTLET WITH P-TRAP. CLEAN AND POLISH AFTER INSTALLATION. REFER TO DETAIL 9/P-500. PROVIDE TRAP PRIMER			
E	FLOOR SINK: ZURN # Z1901-32, RECEPTOR WITH 12" SQUARE TOP x 8" DEEP CAST IRON BODY WITH ACID-RESISTING ENAMEL INTERIOR. RECEPTOR PROVIDED WITH ALUMINUM DOME STRAINER WITHOUT GRATE.			
E1	FLOOR SINK: ZURN # Z1901-2-32, RECEPTOR WITH 12" SQUARE TOP x 8" DEEP CAST IRON BODY WITH ACID-RESISTING ENAMEL INTERIOR. RECEPTOR PROVIDED WITH PORCELAIN ENAMEL LOOSE-SET 1/2 GRATE AND ALUMINUM DOME STRAINER.			
F	NOT USED			
G	FLOOR DRAIN WITH FUNNEL: ZURN # ZB415-AR-4 ACID RESISTING EPOXY COATED CAST IRON DRAIN WITH 5" ROUND POLISHED BRONZE TOP, 4" FUNNEL. PROVIDE 2" OUTLET WITH P-TRAP. CLEAN AND POLISH AFTER INSTALLATION. REFER TO DETAIL. PROVIDE TRAP PRIMER			
H	NOT USED			
I	EXISTING 1,500 GALLON GREASE INTERCEPTOR. CONTRACTOR TO SERVICE INTERCEPTOR AND CONFIRM PROPER OPERATION.			
J	WATER HAMMER ARRESTER: J. R. SMITH #5020, 1" NIPPLE OR EQUAL			
K	PROVIDE: ZURN 375ST STAINLESS STEEL REDUCED PRESSURE PRINCIPLE ASSEMBLY AT BAG-N-BOX. REFER TO 19/P-500			
L	HOSE BIBB: ACORN #8121 WITH VACUUM BREAKER, CHROME PLATED.			
L1	HOSE BIBB: WOODFORD MB65 FREEZELESS COMMERCIAL CONCEALED BOX TYPE WALL HYDRANT IN SECURE LOCK STYLE MODULAR BOX. SINGLE CHECK ANTI SIPHON VACUUM BREAKER. CHROME HEAD, BRASS VALVE BODY HYDRANT WITH 3/4" HOSE CONNECTION 18" A.F.F.			
M	TRENCH DRAIN: ZURN #Z-886-RFS, 6" WIDE x 80" LONG, TRENCH DRAIN SYSTEM. MODULAR CHANNEL SECTIONS SHALL BE MADE OF HIGH DENSITY POLYETHYLENE WITH INTERLOCK ENDS, A RADIUS BOTTOM AND REINFORCED STAINLESS STEEL SLOTTED GRATE.			
N	PROVIDE WATTS SD-3 DUAL CHECK VALVE WITH ATMOSPHERIC PORT AND STRAINER AFTER EACH BV.			
O	FREEZE PROOF ROOF HYDRANT: WOODFORD MODEL: SRH-MS			
P1	MOP SINK: GSW # SE2424FM 24"x24" STAINLESS STEEL UNIT WITH 13" HIGH SIDES, 18 GA. STAINLESS STEEL CHICAGO FAUCET #897 WITH INTEGRAL STOPS IN SHANKS, WALL BRACE, HOSE THREADS, PAIL HOOK, VACUUM BREAKER. ROUGH BRASS FINISH. THREE FOOT RUBBER HOSE, 3" TRAPPED AND VENTED WASTE CONNECTION. PROVIDE 3/4" HW & CW RI 8" OC. 36" A.F.F. PROVIDE 3/2" CW HOSE BIBB, ACORN #8121 W/ VACUUM BREAKER. 48" A.F.F. FOR CHEMICAL CONNECTION.			
P2	EXISTING GAS WATER HEATER MFG: A.O. SMITH MODEL: BTH-199, 100 GALLON, 199.900 BTU/HR GAS INPUT. 230 GPH CONTINUOUS RECOVERY @ 100" RISE.			
P3	NOT USED.			
CP	HW CIRC. PUMP - MFG: BELL & GOSSETT. MODEL: NBF-22U, 1/12 HP, 120 VOLT, 7.5 GPM @ 10' HEAD			
RD	RD - ROOF DRAIN: EXISTING ROOF DRAIN TO REMAIN			
OD	OD - OVERFLOW ROOF DRAIN: EXISTING OVERFLOW ROOF DRAIN TO REMAIN			

FIXTURE BRANCH SCHEDULE				
FIXTURE	COLD WATER	HOT WATER	WASTE	VENT
WATER CLOSET (HANDICAPPED)	1/2"	--	4"	2"
LAVATORY	1/2"	1/2"	2"	1 1/2"
2 AND 3 - COMP SINK	1/2"	1/2"	3"	2"
HAND SINK	1/2"	1/2"	2"	1 1/2"
MOP SINK (J.S.)	1/2"	1/2"	3"	2"
EQUIPMENT	1/2"	--	--	--
FLOOR DRAIN/SINK	--	--	2" OR 3"	2"

KITCHEN EQUIPMENT SCHEDULE				
ITEMS IN THIS SCHEDULE ARE FURNISHED BY THE OWNER AND INSTALLED BY THE GENERAL CONTRACTOR UNLESS NOTED OTHERWISE AND CONNECTED TO THE PLUMBING UTILITIES BY THE PLUMBING CONTRACTOR, WHO SHALL INSTALL ALL PLUMBING DEVICES FURNISHED WITH EQUIPMENT.				
WASTE, FS = FLOOR SINK, CFD = CONDENSATE FLOOR DRAIN, VB = VACUUM BREAKER, FLEX = A SIX FOOT COILED LENGTH OF FOOD QUALITY FLEXIBLE REINFORCED PLASTIC TUBING CONNECTED FROM THE ROUGH IN TO THE EQUIPMENT WITH ALL REQUIRED ADAPTERS AND HOSE CLAMPS.				
ALL PIPES MUST MAINTAIN A MINIMUM CLEARANCE OF 6" AFF AND MUST BE WELL SUPPORTED. NO FLOOR SUPPORTS ALLOWED.				
4A	SERVING COUNTER MOUNTED SODA MACHINE: IF PROVIDED, SODA MACHINE INSTALLER TO PROVIDE DRAIN LINES FROM ICE BIN AND SODA MACHINE TO FS WITH 1" AIR GAP. DRAIN LINE TO BE INSULATED. WATER TO SODA MACHINE TO BE PROVIDED THROUGH BUNDLE FROM FILTER AND RACK IN KITCHEN BY SODA MACHINE INSTALLER. NO LEGS TO BE INSTALLED. MACHINE TO SET DIRECTLY ON COUNTER.			
4AB	BEVERAGE COUNTER MOUNTED SODA MACHINE WITH ICE MACHINE: PROVIDE 3/4" COPPER PIPE IW FROM COUNTER TROUGH DRAIN TO FS WITH 1" AIR GAP. INSULATE. WATER TO SODA MACHINE TO BE PROVIDED THROUGH BUNDLE FROM FILTER AND RACK IN KITCHEN BY SODA MACHINE INSTALLER. NO LEGS TO BE INSTALLED. MACHINE TO SET DIRECTLY ON COUNTER.			
4F	WATER FILTER: PROVIDE 3/2" CW AT 96" AFF WITH BV. PROVIDE FLEX AND REDUCED PRESSURE STAINLESS STEEL BACKFLOW PREVENTOR, OR OTHER DEVICE AS REQUIRED BY LOCAL CODE. INSTALL OWNER PROVIDED WATER FILTER AND MAKE CONNECTIONS TO BACKFLOW PREVENTOR AND WATER SUPPLY. PROVIDE ALL REQUIRED FITTINGS TO ALLOW SODA MACHINE INSTALLER TO HOOK UP BOOSTER PUMP TO WATER FILTER. REFER TO DETAIL 19/P-500.			
9D	ICE TEA MAKER: PROVIDE 3/2" CW @ 24" A.F.F. PROVIDE ALL REQUIRED FITTINGS TO ALLOW ICE TEA INSTALLER TO HOOK UP ONE BV. OTHER BV FOR OTHER EQUIPMENT.			
10U	SODA MACHINE MOUNTED ICE MACHINE: PROVIDE 1/2" CW AT 24" A.F.F. WITH BV. PROVIDE ALL REQUIRED FITTINGS TO ALLOW ICE MACHINE INSTALLER TO HOOK UP ICE MACHINE TO CW.			
20A	CHINESE RANGE: PROVIDE 3/2" CW AT 10" AFF WITH BV. PROVIDE PRESSURE TYPE VB OR OTHER BACKFLOW DEVICE AS REQUIRED BY LOCAL CODE, AND CONNECT TO OWNER SUPPLIED FAUCETS. PROVIDE 2" COPPER PIPE IW TO FS WITH 2" AIR GAP.			
20B	PROVIDE 1/2" GAS SUPPLY AT 9" AFF WITH EASILY ACCESSIBLE SHUT-OFF VALVE. INSTALL OWNER SUPPLIED GAS REGULATOR AND ADJUST GAS LEVEL TO BURNERS.			
20Q	CHINESE RANGE: PROVIDE 3/2" CW AT 10" AFF WITH BV. PROVIDE PRESSURE TYPE VB OR OTHER BACKFLOW DEVICE AS REQUIRED BY LOCAL CODE, AND CONNECT TO OWNER SUPPLIED FAUCETS. PROVIDE 2" COPPER PIPE IW TO FS WITH 2" AIR GAP. PROVIDE 1" GAS SUPPLY DOWN TO 9" AFF REDUCE TO 3/4" AT EQUIPMENT CONNECTION WITH EASILY ACCESSIBLE SHUT-OFF VALVE. INSTALL OWNER SUPPLIED GAS REGULATOR AND ADJUST GAS LEVEL TO BURNERS.			
21G	FRYER: PROVIDE 1-1/4" GAS SUPPLY DOWN TO 14" AFF THEN TRANSITION TO 1" WITH 90° ANGLE AND SHUT OFF VALVE. PROVIDE ALL REQUIRED FITTINGS AND INSTALL OWNER SUPPLIED QUICK DISCONNECT FLEXIBLE PIPE AND CONNECT TO UNITS WITH 90° ANGLE. SEE DETAIL ON P-500			
25A	RICE COOKER: PROVIDE 3/4" GAS SUPPLY AT 30", AND 3/4" GAS SUPPLY AT 10" AFF WITH SHUT OFF VALVES, ONE FOR EACH UNIT. PROVIDE ALL REQUIRED FITTINGS AND INSTALL OWNER SUPPLIED QUICK DISCONNECT FLEXIBLE PIPE AND CONNECT TO UNITS.			
31	WALK-IN COOLER: PROVIDE 1" COPPER PIPE IW FROM DRAIN PAN ON EACH UNIT TO FLOOR DRAIN WITH "P" TRAP AND 1" AIR GAP. MOUNT ALL PIPES WITHIN WALK-IN BOX WITH 1" HOLD-OFF SUPPORTS.			
32	WALK-IN FREEZER: PROVIDE 1" COPPER PIPE IW FROM DRAIN PAN ON EACH UNIT TO FLOOR DRAIN WITH "P" TRAP AND 1" AIR GAP. MOUNT ALL PIPES WITHIN WALK-IN BOX WITH 1" HOLD-OFF SUPPORTS. PROVIDE HEAT TRACE REFER TO ELECTRICAL DRAWING.			
40A	POT SINK: PROVIDE 3/2" CW AND 3/2" HW AT 14" AFF AND 8" OC WITH BVS & CV. CONNECT TO OWNER SUPPLIED FAUCET WITH COPPER PIPING. PROVIDE 2" COPPER PIPE IW (MANIFOLD ALL COMPARTMENT DRAINS INTO ONE LINE) TO FS WITH 2" AIR GAP. OR, IF REQUIRED BY LOCAL CODE, INSTALL 2" COPPER PIPE DIRECTLY TO SEWER SYSTEM. INSTALL OWNER SUPPLIED LEVER DRAIN STOPS. SEE DETAIL ON SHEET P-500.			
40B	FAUCET FOR CHEM: T&S BRASS MODEL #B-0669-POL. PROVIDED BY G.C.			
41B	SINGLE BOWL PREP SINK: PROVIDE 3/2" CW AND 3/2" HW AT 14" AFF AND 8" OC WITH BVS. TRANSITION TO 3/4" PRIOR TO CONNECTION. CONNECT TO OWNER SUPPLIED FAUCETS WITH COPPER PIPING. PROVIDE 2" COPPER PIPE IW TO FS WITH 2" AIR GAP. OR, IF REQUIRED BY LOCAL CODE, INSTALL 2" COPPER PIPE DIRECTLY TO SEWER SYSTEM. INSTALL OWNER SUPPLIED LEVER DRAIN STOPS.			
41C				
45A	HAND SINK: PROVIDE 3/2" CW AND 3/2" HW AT 24" AFF AND 8" OC WITH CHROME-PLATED, 1/2 TURN BALL VALVES. CONNECT TO OWNER SUPPLIED FAUCETS WITH METAL FLEX PIPING. PROVIDE 2" DRAIN PIPE WITH "P" TRAP AND WALL MOUNTED CLEAN-OUT. ALL EXPOSED DRAIN PIPES AND FITTINGS TO BE CHROME PLATED, NOT P.V.C.			

PIPE MATERIAL SCHEDULE		
SERVICE	UNDERGROUND	ABOVE GROUND
COLD & HOT WATER	TYPE "K" OR "L" HARD DRAWN COPPER TUBE	PEX
SANITARY WASTE	*SCH. 40 PVC	*SCH. 40 PVC
SANITARY VENT	*SCH. 40 PVC	*SCH. 40 PVC
GAS	---	BLACK STEEL, SCHEDULE 40
INDIRECT DRAIN	---	HARD DRAWN COPPER TUBE TYPE "M"
*SCH. 40 PVC IS PREFERRED IF APPROVED BY AUTHORITY HAVING JURISDICTION. PROVIDE SCHEDULE 40 PVC FOR ALL WASTE VENT PIPING & FITTINGS.		

PLUMBING KEY NOTES							
1. SODA CONDUIT: PROVIDE 6" PVC CONDUIT ABOVE CEILING FROM THE SIDE OF SODA STORAGE RACK TO SODA DISPENSER PER DETAIL #4 ON SHEET P-500.							
2. CONDENSATE: ROUTE SHARED CONDENSATE LINE THROUGH WALK-IN COOLER. DO NOT RUN THROUGH WALK-IN FREEZER. PROVIDE 1" INSULATED CONDENSATE DRAIN PIPE FROM THE EVAPORATIVE COIL. DISCHARGE TO FLOOR SINK OR MOP SINK WITH AIR GAP OF TWICE PIPE DIAMETER. INSTALL AT MINIMUM 76" HEIGHT A.F.F. REFER TO DETAIL #2 ON SHEET P-500.							
3. ROUTE WATER HEATER DRAIN PAN TO EXISTING FLOOR DRAIN WITH AIR GAP.							
4. PROVIDE TRAP PRIMER FOR FLOOR DRAIN. SEE DETAIL 17/P-500.							
5. ROUTE CONDENSATE DRAIN LINE DOWN IN COOLER TO LOWEST POSSIBLE LOCATION. ROUTE THROUGH WALL TO ABOVE FLOOR DRAIN. TERMINATE WITH AIR GAP DIRECTLY ABOVE FLOOR DRAIN.							
6. TRAP PRIMER REFER TO DETAIL 9/P-500.							
7. COMBINATION WASTE/VENT.							
8. 3" PVC ROOF DRAIN WITH 3" PVC LAMB'S TONGUE NOZZLE, COLOR ANTIQUE BRONZE, ARKMANN MODEL #PDN-3. OVERFLOW ACHIEVED WITH SKUPPER AT THIS CONDITION.							
FIXTURE UNIT SCHEDULE							
ITEM	FIXTURE	QTY	WATER FU		SEWER FU		
			EACH	TOTAL	EACH	TOTAL	
A A.1	WATER CLOSET	3	5	15	4	12	
B	LAVATORY	2	2	4	1	2	
C	URINAL	1	3	3	3	3	
D D1	FLOOR DRAIN 3" TRAP	7	—	—	5	35	
E E1	FLOOR SINK 3" TRAP	8	—	—	5	40	
P1	MOP SINK	1	3	3	2	2	
G	FLOOR DRAIN W/ FUNNEL 2" TRAP	2	—	—	3	6	
L L1	HOSE BIBB	2	4	8	—	—	
M	TRENCH DRAIN 3" TRAP	1	—	—	5	5	
O	ROOF HOSE BIBB	1	4	4	—	—	
4F	FILTER SYSTEM	1	1	1	FS	—	
9D	ICE TEA BREWER	2	1	2	FS	—	
10U	400 LB ICE MACHINE	2	F.U. @	1	2	FS	—
20A	CHINESE RANGE	1	2	2	FS	—	
20Q	CHINESE RANGE	1	2	2	FS	—	
40A	POT SINK (3.COMP.)	1	4	4	FS	—	
41B	PREP. SINK (1.COMP.)	2	4	8	FS	—	
41C							
45A	HAND SINK (WALL MOUNT)	2	2	4	1	2	
TOTAL			62		107		
FIXTURE UNIT SUMMARY							
SERVICE					TOTAL F.U.		
DOMESTIC WATER					62		
SANITARY SEWER					107		
SERVICE REQUIREMENTS							
SERVICE		SIZE MAIN		CAPACITY			
DOMESTIC WATER		1-1/2 INCH		33 GPM			
SANITARY SEWER		4 INCH		107 F.U.			
FUEL GAS		3 INCH		2109 CFH			
FIRE PROTECTION		INCH		GPM			
WATER PIPE SIZING CHART (COLD WATER)							
PIPE SIZE	GPM	VELOCITY FT/SEC	FIXTURE UNITS				
			F - TANK		F - VALVE		
1/2"	2.5	3.5	2 F.U. @ psi	6.0	F.U. @ psi		
3/4"	6.6	4.4	8 F.U. @ psi		F.U. @ psi		
1"	13.4	5.2	19 F.U. @ psi		F.U. @ psi		
1-1/4"	23.3	5.9	37 F.U. @ psi		6 F.U. @ psi		
1-1/2"	36.7	6.6	74 F.U. @ psi		23 F.U. @ psi		
2"	76.4	7.9	254 F.U. @ psi	↓	132 F.U. @ psi		
DOMESTIC WATER BACKFLOW PREVENTER MODEL: "WILKINS"975XL, SIZE 1-1/2"							
** PRESSURE REGULATING VALVE MODEL: N/A, SIZE N/A							
WATER PIPE SIZING CHART (HOT WATER)							
PIPE SIZE	GPM	VELOCITY FT/SEC	FIXTURE UNITS				
			F - TANK		F - VALVE		
1/2"	2.5	3.5	2 F.U. @ psi		F.U. @ psi		
3/4"	6.6	4.4	8 F.U. @ psi		F.U. @ psi		
1"	13.2	5.0	19 F.U. @ psi		F.U. @ psi		
1-1/4"	19.0	5.0	37 F.U. @ psi		6 F.U. @ psi		
GREASE INTERCEPTOR CALCULATION							
FIXTURE		QTY.	FU	FU TOTAL			
FLOOR DRAIN/FLOOR SINK 3" TRAP		7	5	35			
TRENCH DRAIN 3" TRAP		1	5	5			
MOP SINK		1	2	2			
TOTAL				42 (25 GPM)			
FIXTURE UNIT VALUE BASED ON 2012 IPC, SECTION 709							
FLOW THROUGH TYPE GREASE INTERCEPTOR MINIMUM SIZE WILL BE 50 POUND GREASE CAPACITY PER 2012 IPC, TABLE 1003.34.1.							
EXISTING GRAVITY TYPE GREASE INTERCEPTOR SIZE BASED ON 24 GPM WITH 30 MINUTE RETENTION TIME (19'30"-570") IS SIZED AT 1500 GALLONS.							



PANDA EXPRESS, INC.
 1683 Walnut Grove Ave.
 Rosemead, California 91770
 Telephone: 626.799.9898
 Facsimile: 626.372.8288

All ideas, designs, arrangement and plans indicated or represented by this drawing are the property of Panda Express Inc. and were created for use on this specific project. None of these ideas, designs, arrangements or plans may be used by or disclosed to any person, firm, or corporation without the written permission of Panda Express Inc.

REVISIONS:

NO.	DESCRIPTION	DATE

ISSUE DATE:

NO.	DESCRIPTION	DATE
1st	DEVELOPER REVIEW	07.15.19
2nd	SITE PLAN SUBMITTAL	08.26.19
3rd	SITE COMMENTS	09.05.19
4th	ISSUE FOR PERMIT	10.01.19
5th	ISSUE FOR BID	11.07.19

DRAWN BY: PM / KL / EA

PANDA PROJECT #: S8-20-D7163

ARCH PROJECT #: 19027

James F. Turner
Engineers, L.P.
 Consulting Engineers
 8340 Meadow Road, #160
 Dallas, TX 75223
 214.750.2900
 FAX: 469.7296
 COA #CA-5874-E

ALABAMA REGISTERED ENGINEER No. 14970 PROFESSIONAL

11/1/19

Heights Venture
 ARCHITECTURE • DESIGN